



Taipei City Employment Services Office
 台灣就業通 TaiwanJobs



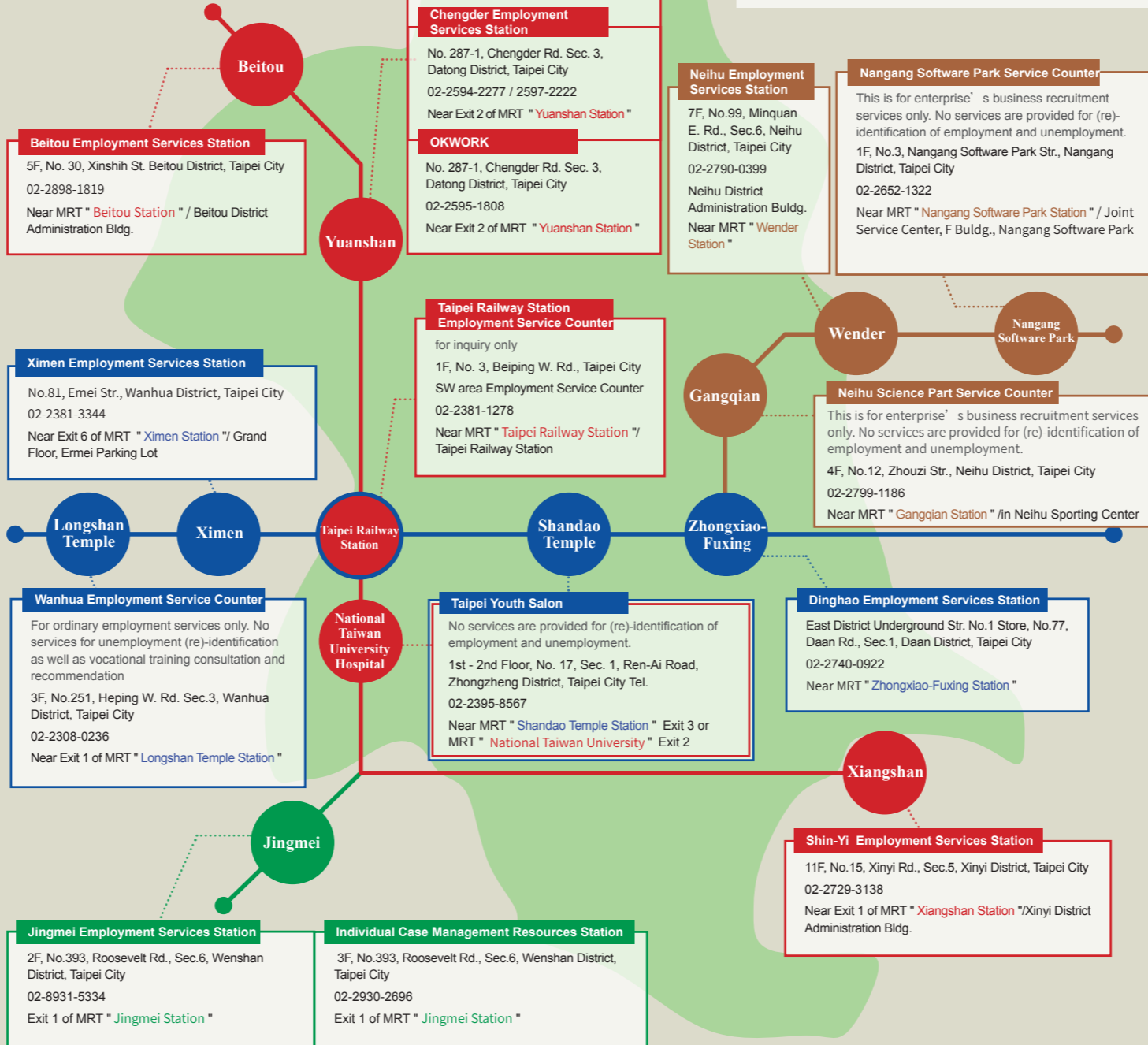
URL <http://eso.gov.taipei>
 Tel. 02-2594-2277 or 1999轉58999
 02-2597-2222 Taipei Citizens' Hotline (Free)

UNIVERSIADE TAIPEI 2017
 2017世界大學運動會 在臺北
 Date Printed 104年
 The contents of each measure herein are based on the most recent information as of the date printed announced by each unit.

Supported by the Workforce Development Agency, Ministry of Labor Affairs

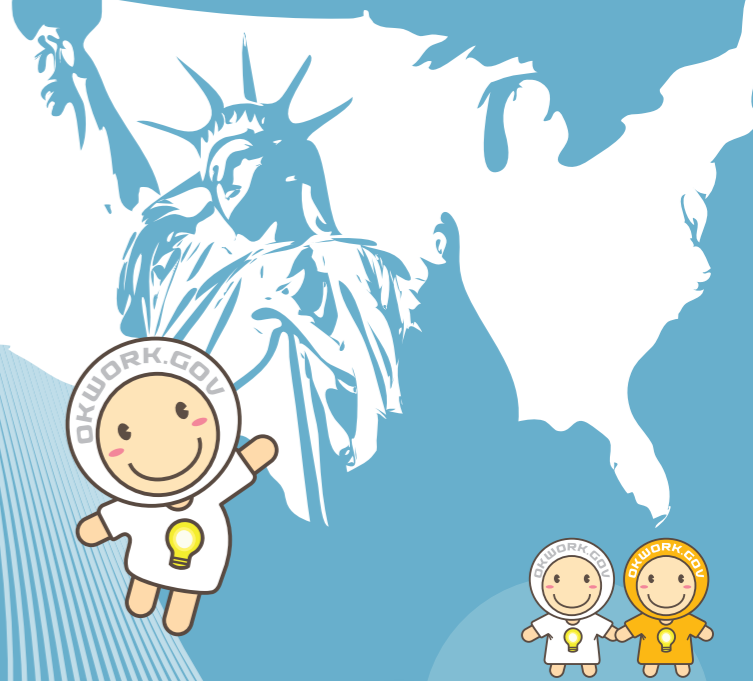


MRT map for employment service stations



English

あなたへようこそ。 歓迎
 歡迎你你
 Welcome to you Benvenuto a tu
 오신 것을 환영합니다
 Bienvenido a us



Governmental Resources for Foreign Spouses Seeking Employment

Taipei City Employment Services Office

台北市就業服務處
 TaiwanJobs

7 Employment Service Stations That will help you find safe and reliable employment

- Let the government help you find a job. This service, which is open to everyone, is secure, reliable and completely free.
- Once you obtain your ROC (Taiwan) resident certificate, you can start legally working in Taiwan without applying for a separate work permit.

Taipei City's Employment Services Office offers the following services :

A. Case management service

At Chengde Employment Service Center, two dedicated sales counselors are available to offer one-on-one specialized individual case management services to guide you through the entire process, from job seeking until steady employment.

B. Employment service

Our job search services are completely free. If you are suffering from unemployment or just looking for a new job, just visit your closest employment service branch and register to receive our employment service. We offer four easy ways to register:

- Register in person. Just fill in an employment registration form and attach a copy of the back and front of your ROC resident certificate.
- Call our employment service at (02) 2594-2277 to speak with staff especially assigned to help you register and find the best job opportunities for you.
- Visit the OKWORK Employment Service Website at www.okwork.gov.tw for more information.
- Contact Taipei City Employment Services Office or other affiliated employment service stations.

C. Vocational training consultation and recommendation

The Office has relevant information and counseling services regarding vocational training courses and can recommend the best courses for you and your job goals. Such training can provide you with professional skills, and the training expenses are fully subsidized.

D. Training courses for employment promotion

These courses will aid you in understanding Taiwan's laws and regulations regarding our country's work and labor rights, including knowledge of workplace conditions, job search methods, interview skills, etc., all of which can improve your pre-service preparation, your employment skills and your command of labor market trends.

E. Related employment driving tools are available

Temporary work allowance

- After registering for employment service at the Office, if you are still unable to find a suitable job after going through our job placement program at least twice in 14 days, you may apply for a "Temporary Work Allowance" subject to our professional advisory assessment that shall prove that no proper employment opportunities are currently available for you. The allowance will be paid hourly for eight hours a day, with a maximum of 176 hours each month for no more than six months.

Multiple employment development programs

- Economical type and social type multiple employment development programs are available. Only individuals who are 45 years or older can register for the social type. This program is fulfilled on an hourly basis and is available eight hours a day, with a maximum of 176 hours per month for no more than six months.

Relevant applicable allowances according to the Employment Insurance Act :

- The Employment Insurance Act, which was amended and became effective on May 1, 2009, also applies to new immigrant workers. Available subsidies include unemployment benefits, earlier reemployment allowance, vocational training living allowance, subsidy for parental leave without payment, subsidies for NHI (National Health Insurance) premium, etc.

A. More to be included under the Employment Insurance Program

This program is open to foreign workers between the ages of 15 and 65, from countries such as China, Hong Kong or Macau, with legal domicile and occupations in Taiwan and who are married to Taiwanese citizens.

B. Unemployment benefits

Applicant qualifications

- Employees between the ages of 15 and 65 (including domestic ROC workers and foreign spouses from countries such as China, Hong Kong or Macau, who are married to R.O.C. citizens with legal domicile and occupations in Taiwan) and became insured under the Employment Insurance Program through their employers or affiliated institutions as a group insurance applicant.
- People who left their jobs involuntarily who have more than one year of accumulated insurance seniority within three years prior to applying for a withdrawal from the employment insurance program.
- Those capable of working and who want to continue working.
- Individuals those were unable to find job placement or a vocational training arrangement within 14 days of registering for our employment service in one of our official employment service institutes.
- People collecting unemployment payments may still apply to public employment service institutions to reconfirm their unemployment every month within two years from the end of their last unemployment payment period. To reconfirm unemployment, at least two job seeking records need to be provided.

Payment and Duration

- Unemployment benefits shall be paid on a monthly basis; the benefit will be 60% of the applicant's average monthly insurance salary during the six months prior to the month in which the applicant resigned and applied for withdrawal from employment insurance. The subsidy will be provided for no more than six months.
- If the applicant is 45 years old or more when applying for withdrawal from the employment insurance program after his/her resignation or has a certificate of disability issued by competent authorities of social administration, the subsidy can be extended to a maximum of nine months. Once all unemployment payments have been duly received by the applicant, his/her employment insurance seniority will start being counted (this will not affect his/her seniority of labor insurance for retirement).
- Additional payments can also be made to dependents based on the following scale: an additional 10% and up to 20% for a "spouse", "minor child" or "disabled child" that does not have earning ability and is dependent on the insured.

C. Subsidies for Unpaid Parental Leave for Raising Children

- Available for those with at least one year of accumulated insurance seniority and with children under three years old.
- 60% of the applicant's average monthly insurance salary during the six months prior to applying for the leave will be paid.

Other Frequently Used Resource Units

- ◆ Foreign Affairs Division, Taipei Municipal Police Department
Tel. : (02)23817494
- ◆ National Immigration Agency, Ministry of the Interior
Tel. : (02)23889393
- ◆ Department of Health, Taipei City Government
Tel. : 1999/(02)27208889 ext.7070
- ◆ National Health Insurance Administration, Ministry of Health and Welfare, Taipei Division
Tel. : (02)21912006
- ◆ Taipei City Vocational Development Institute
Tel. : (02)28721940
- ◆ Taipei City Motor and Vehicles Office
Tel. : (02)27630155
- ◆ Department of Education, Taipei City Government
Tel. : (02)27256423
- ◆ Taipei City Center for Prevention of Domestic Violence and Sexual Assault
Tel. : (02)23961996
- ◆ National Happy Kids Protection Special Line, Ministry of the Interior
Tel. : 113
- ◆ Citizen Hotline
Tel. : 1999/(02)27208889
- ◆ Legal Consultation Service Special Line, Taipei City Government
Tel. : 1999/(02)27208889 ext. 6168

