



URL : <http://eso.gov.taipei>

服務電話 : (02)2308-5230/(02)2308-5231 或 轉 58999

服務傳真 : (02)2308-5359

服務地址 : 臺北市萬華區艋舺大道 101 號 8 樓

編印日期 111 年

各項措施內容以各單位最新公告資料為準

-Sponsored by Ministry of Labor-



Taipei City Employment Service Office



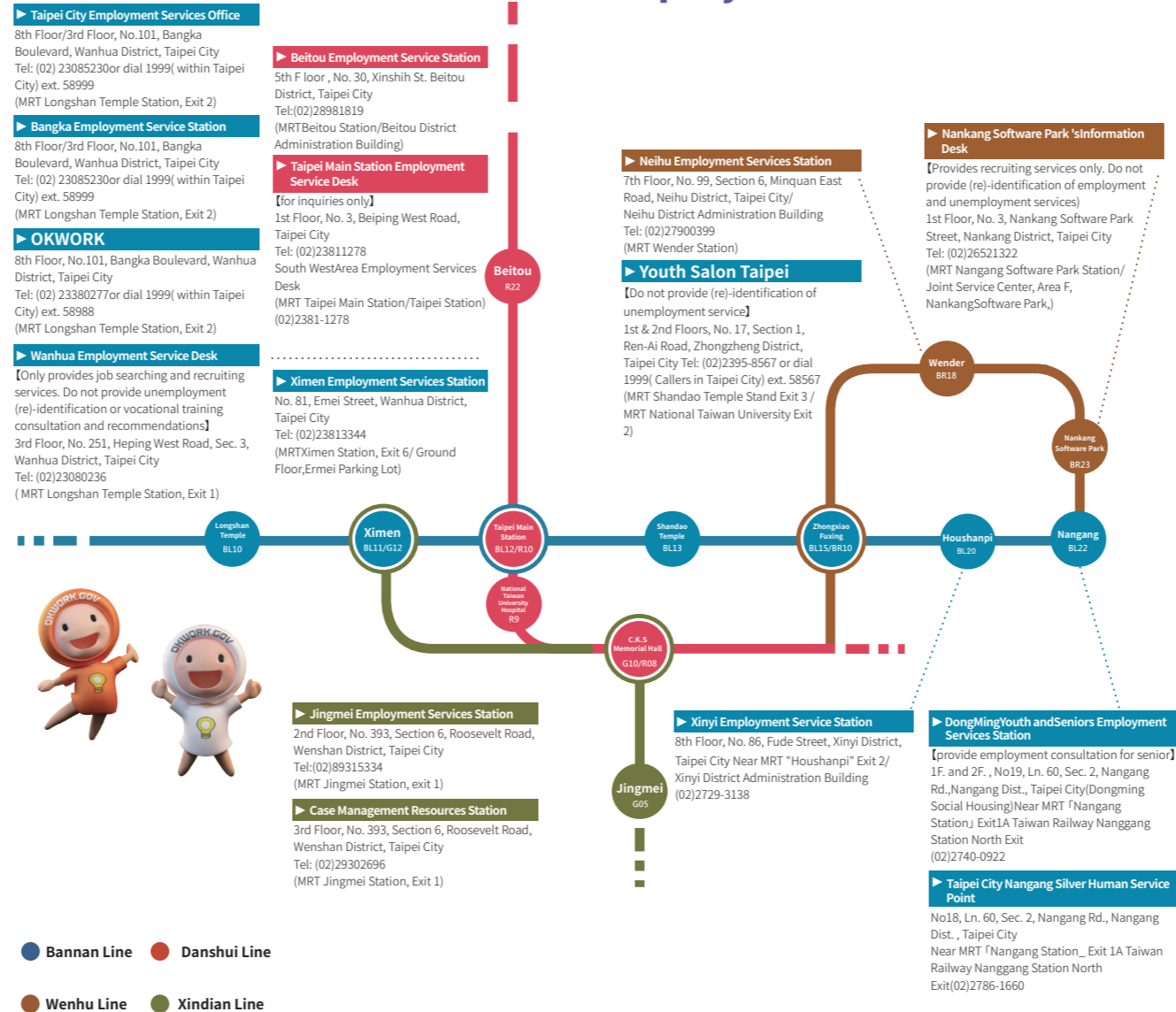
OKwork



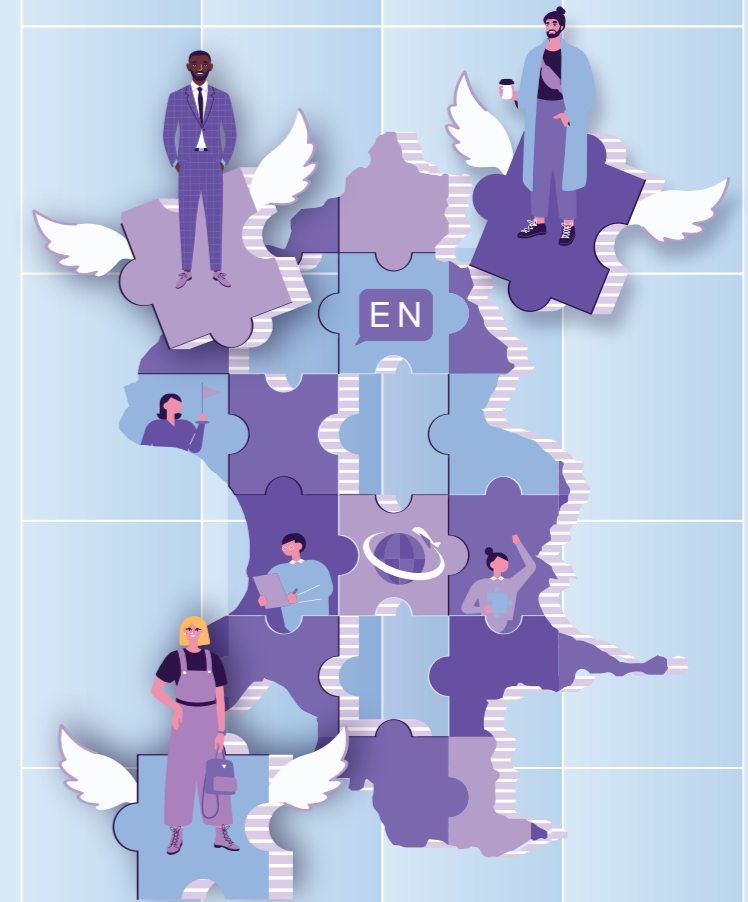
Line

Advertisement

C. MRT map for each Employment Service Station



Brief Introduction of Employment Service Resources



Target group of the service and the main purpose of the service

Target group of the service: Foreign Spouse and Mainland China Spouse with Alien Registration Card.

Purpose of the service: In order to help these new immigrants to adapt to the living environment in Taiwan in an earlier stage, and at the same time to protect their working rights, Taipei City Employment Services Office provides various free employment counseling services to the foreign spouse and mainland China spouse with working permit.

Providing one-to-one employment counselling to eliminate employment barriers:

In order to help you to be employed successfully and eliminate employment barriers, two dedicated career counselors are assigned at Bangka Employment Service Station. It adopts one-to-one case management service mode by dedicated personnel to assist new immigrants' career planning, self-checking, CV review, and mock-up interview in order to eliminate employment barriers.

Vocational training consultation and recommendation

Provides information regarding vocational training courses, gives counseling services, and recommends you the training course that suits you the most. Such training course will be fully subsidized, and it helps you to acquire professional skills.

Employment workshop for new immigrants and group counselling class:

The employment service office found that most of the immigrants were not familiar with the working market, environment and culture in Taiwan while the office gave employment services to the new immigrants. So, the employment workshop is set up to help immigrants who are looking for jobs to adapt to the working environment in Taiwan in the earlier stage when they start working.

Entrepreneurial class

We provide complete and abundant 21-hour entrepreneurial courses and start-up package seminars for those who want to set up their own business. We carry out one-to-one counselling, arrange visits to shops successfully established by new immigrants, and invite successful cases to the performance presentation held every year to share their experience and exchange their knowledge in order to pass on the experience and help you achieve your dream.

Employment promotion – supporting your demands for seeking the employment

The government has specially designed some tools and subsidies to help the particular underprivileged job seeker in the job market to find jobs and increase the employers' desire to hire more employees. If you meet the requirements, the appropriate tools or subsidies programs will be introduced to increase your employment opportunities.

Unemployment (re)-identification

If you are unemployed involuntarily, you may visit our employment service office or employment stations to apply for unemployment benefit in order to maintain your basic living during the unemployment period. We will assist you to process the unemployment (re)-identification, and also apply for unemployment subsidy.

Intermediate workplace – short-term paid part-time work for the implementation of simple vocational training

In order to help you be familiar with skills for work and the use of office equipment as well as enhance interpersonal relationship during employment-seeking period, we arrange simple vocational training at work to build up your confidence for work. Also, we will also recommend you to government agency or legal registered non-profit group for short-time employment placement to develop your employment capability. Moreover, paid job-seeking leave will be provided during your short-term work to encourage you to enter to the workforce actively.

Providing learning opportunity at work

In order to help you carrying out employment preparation and adaptation, we create job vacancy for workplace internship at business entity or group to offer you the opportunity of skill learning and environment adaptation at the post. It is the most direct on-the-job training.

New immigrants' children career development service

Employment Services Office holds new immigrants' children career development activity at Taipei Youth Salon. The professional counselors will assist new immigrants' children to explore themselves and check out their strength and weakness, get familiar with the quality and ability required for the five main career categories, and help them to carry out career planning for the future.

Providing childcare service for employment-seeking and employment-learning class

In order to assist the demand of childcare when one seeks employment, we set up children's playroom at Bangka Employment Service Station and Nankang Dongming Youth and Seniors Employment Services Station. Babysitter volunteers will be available there so that one can take their children to the site when carrying out job interview or study at the employment learning class. Qualified babysitters with certificates will help one take care of the children so that one can go for interview or class without worries and successfully be employed.

Station and outreach services of the Ministry of the Interior National Immigration Agency

Through this mode, the department's assistant staff will meet on the spot directly, bring the relevant information of the case back to the department for follow-up coaching, and provide employment assistance, recommendation and companion support according to the needs of the case.



Contact for other government offices

■ Taipei City Vocational Development Institute

Tel: (02)2872-1940

■ Legal Consultation Service Hotline, Taipei City Government

Tel: 1999/(02)2720-8889 ext. 6168

■ National Immigration Agency, Ministry of the Interior

Legal enquiries hotline for foreign spouse
Tel : (02)2388-9393#3122

Legal enquiries hotline for Mainland China spouse
Tel: (02)2388-9393#0

