



1 An Overview of Taipei

The development of the Taipei Basin dates back to the 48th year of the Kangxi Emperor's reign in the Qing Dynasty (1709), when the “Chen Lai-zhang Land Grant” granted imperial permission to open up the Tagala District along Danshui River. The Tagala District was inhabited by the aboriginal Ketagalan tribe; Han Chinese settlers moved in and developed the land, and the area prospered. Taipei Prefecture was officially established in the 10th year of Emperor Guangxu's reign in the Qing Dynasty (1874); political institutions, development projects and the population subsequently flourished, transforming the city; and Taipei evolved from an agricultural community into the political and financial hub of the country. As marriages between citizens of Taipei and spouses from other countries and mainland China increase in number, Taipei's population has also grown more dynamic and multifaceted.

01 An Overview of Taipei

Taipei was home to the aboriginal Ketagalan tribe more than 300 years ago. During the Ming and Qing Dynasties, development by Han Chinese settlers gradually transformed Taipei into the nexus of Northern Taiwan. The opening of the port of Danshui in the mid-19th century – inspired by growing Western influence in the East – further supported the growth of export and trade at Dadaocheng, and it boosted the local economy, thus laying a solid foundation for Taipei's future development. Taipei has prospered tremendously since the Qing Dynasty, the Japanese Colonial Period, the Retrocession and its elevation to a direct-controlled municipality. Taipei has grown by leaps and bounds in the last forty years, and now ranks among the most thriving international cities in the global community.

Part 1 Topographical Overview

1. Topographical Overview

Taipei City is situated in the northern part of Taiwan. The greater Taipei area includes the northeast of the Taipei Basin and the surrounding hill areas. It borders New Taipei City on all sides. Hills and the Keelung Valley dominate the north and east regions of the city, abutting on Danshui, Sanzhi, Jinshan, Wanli, Xizhi, Shiding, and Shenkeng in New Taipei City. On the west and south sides of the city, the Danshui River and its tributaries, the Xindian River and Jingmei River – are bordered by Xindian, Zhonghe, Yonghe, Banqiao, Sanchong, Luzhou and Wugu. The minor ridges on the south of Zhuzi Volcano are Taipei's northernmost point. They are the border between Beitou District and Sanzhi and Jinshan Townships; the eastern edge is where Nangang, Xizhi and Shiding meet. The southern rim demarcates the boundary between Wenshan District and

Xindian District. Guandu faces Beitou District and Wugu at the City's westernmost point. Taipei's length from north to south is 27.655 km, its width from east to west is measured at 20.754 km; the circumference of the city is 216 km, and Taipei occupies a total area of 271.7997 km².

Topographically, the terrain – higher in the northeast and southeast regions of the city – consists mostly of volcanic mountains and hilly areas, which account for more than half of the city's area. The Datun Volcanoes in the north are elevated and wide. The area between the hills of the north and south is a lowland. It is made up of a basin and a river valley plain that slopes slightly towards the northwest.

Within the city, the Jingmei, Xindian and Danshui Rivers travel by its southern and western edges; the Keelung River and its tributaries – the Shuangxi, Huangxi and Beitou Rivers – flow through downtown Taipei, and converge on the Danshui River near Guandu before entering the Taiwan Strait by Danshui. Areas on the shore of the Danshui River – such as Mengjia and Dadaocheng – were the city's trade and economic center in the early days. In addition to being vital business hubs, they were also the cradles of northern Taiwan's cultural development.

Geographic Coordinates of Taipei's Center and Four Limits:

Center: Xikang Borough, Neihu District (121°33'20" E, 25°05'14" N)

Eastern: Jiujuang Borough, Nangang District (121°39'30" E, 25°01'51" N)

Western: Guandu Borough, Beitou District (121°27'10" E, 25°06'59" N)

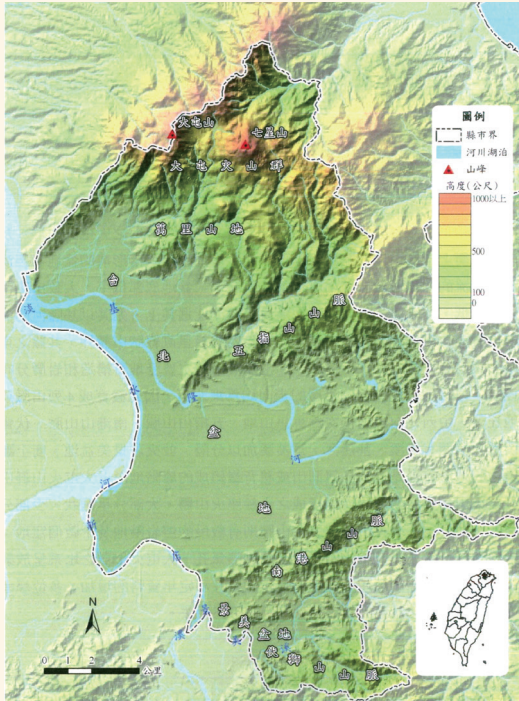
Southern: Zhinan Borough, Wenshan District (121°35'22" E, 24°57'42" N)

Northern: Hushan Borough, Beitou District (121°33'04" E, 25°12'46" N)

2. Topographical Differentiation

Taipei City's terrain can be divided roughly into three types of landform: the Taipei Basin in the southwest, the Datun Volcanoes in the north,





Topography of Taipei City (Source: Professor Yang Gui-san)

and the over-thrust fault ridges in the southeast.

The Taipei Basin is a basin area formed by fault displacement; erosion activities by Danshui River and its tributary contribute to its present form. Taipei City sits in the northeastern region of the basin. The bottom of the basin is low and flat, and slopes northwesterly from the southeast. The Danshui, Xindian and Keelung Rivers snake through the basin. Among the three, the Keelung River has the most prominently meandering river course; the geomorphological shifts of its course over the years have also been the most noticeable. Vertical mountain ranges line the northwestern edge of the basin, while valley-like ridges skirt the Basin's northeastern and southeastern rims.

The Datun Mountains consist of a group of ten volcanic mountains formed by breccias and magma expelled by the volcano. Most of them are volcanic cinder cones, a minority of which are composite volcanoes. The remains of craters can still be spotted on top of several volcanoes. Several stretches of lava terraces and a dozen

depressions encircle the mountainside. Vents formed by post-volcanic activities are scattered atop the Jinshan Fault. The river system on the Datun Volcanoes is radial; waterfalls are formed by the protruding hard rocks.

The over-thrust fault ridges are predominantly controlled by the geological structure and the distribution of different strata of rock. The geological structure and the strata travel in an east-northeastern direction, and have produced four ranges of mountains and hills. They are (from northwest to southeast): Wanli Mountain, the Wuzhi Mountain Range, the Nangang Mountain Range, and the Fushi Mountain Range. They are separated by Shuangxi, the Keelung River, and the Jingmei River. The Jingmei Basin is sandwiched in between them.

The over-thrust fault ridges are characterized by strati-graphic cuestas or hogback formations. Due to the recent increase in drilling and data gathered from radiometric dating, expert opinion on the terrestrial evolution in Taipei or Taipei Basin has also diverged.

(1) The Basin

Areas less than 20 meters in height are categorized as the basin area. At 243 square kilometers in size, the basin resembles a triangle. The top of the triangle points northwest. Shulin sits at the triangle's southwestern tip, while Nangang is located in the triangle's northeastern region, and Guandu is situated at the basin's northwestern end. The bottom of the basin is low and flat. Other than the mountains and rivers, the basin inclines slightly from the southeast to the northwest.

The Taipei Basin's western region dips low, while the eastern area appears to rise. This suggests that the Basin is not entirely a tectonically descent region. The descent in the Basin's western part was caused by the Shanchiao Fault; the bulge in the eastern region is likely influenced by the strati-graphic shift in the western mountain range, or other unknown factors.

The bottom of the Basin sits inclined from east-northeast to west-southwest. Nangang in the northwestern tip neighbors Keelung River; Gongguan in midpoint nestles by Xindian River;

and Shulin in the southwestern edge lies near Dahan River, which flows into the Basin. The three rivers meet in the center of the Basin and exit the Basin by Guandu at the top of the triangle before entering the ocean by Danshui.



The Danshui River cuts across the Taipei Basin before entering the ocean by Danshui



Taipei Basin used to be a great lake, and the estuary of the Danshui River



The Datun Volcanoes in Taipei are the head of the Danshui River



The view of Qixing Mountain from Yangmingshan. Puffs of steamy gas rise from afar.

(2) Volcanic Areas

The Datun Volcanoes are located in the north of Taipei City. These majestic volcanoes erupted during the Pleistocene. They consist primarily of cinder cones and composite volcanoes. Post-volcanic activity still remains, contributing to the vents seen on the mountains. Craters are situated atop the mountains. Several stretches of lava terraces are scattered about the area. Depressions have formed between the volcanoes, and waterfalls are a common sight in the radial drainages. Most of the areas here have been incorporated within the Yangmingshan National Park.

Volcanoes of this category are scattered about the northwest side of the Kanjiao Fault. The primary volcanoes are situated on three tectonic lines of weakness that run in a northeast – southwest direction. The range

found farthest northwest include: Zhuzi Volcano, Xiaoguan Yin Volcano, Datun Volcano, Miantian Volcano and Guanyin Volcano. Qixing Volcano and Shamao Volcano sit along the median tectonic line. Hengzui Volcano and Dajianhou Volcano are distributed along the tectonic line of weakness in the southeast. Zhongfuzi Mountain and Badou Mountain (Nanzi Mountain) sit by themselves on the northeastern tip at Kanjiao Fault. Active vents among the Datun Volcanoes are predominantly located among the volcanic ranges along the second (median) and third (southeast) tectonic lines, such as Sulfur Valley in New Beitou, Qixing Volcano's Xiaoyukeng, Hengzui Volcano, and Dajianhou Volcano's Kengziping and Dayukeng.

(3) The Over-Thrust Fault Ridges

The northeastern and southeastern sides of the Taipei Basin belong to the northern tip of the Jiali Mountain Range – an over-thrust fault ridge situated along western Taiwan. Their elevation



is low, with mild undulation. Topographically, they are no longer considered mountains, but hills. The most prominent landform of this region is its gradient. From northwest – southeast, the area can be divided into several sections: Wanli Mountain and the Wuzhi, Nangang and Fushi Mountain Ranges.

A. Wanli Mountain

Shuangxi runs parallel to the fault line just north of the Kanjiao Fault. This area is the fault line pass of Kanjiao Fault. The area between the Kanjiao Fault and the Jinshan Fault to the north is 8 to 9 kilometers in width. Professor Lin Chaoqi called this area “Wanli Mountain.” The sedimentary stratum is a monocline, formed from the Oligocene and Miocene strata. It travels in an east-northeast and west-southwest direction, with a south-southeast incline of 15-25 degrees.

B. The Wuzhi Mountain Range

The Wuzhi Mountain Range is located in an area between the northwest of the Keelung River longitudinal valley plain and the Kanjiao Fault. Rising from the Keelung coastline in the east and merging into the Taipei Basin in the west, it is approximately 25 kilometers in length. The mountain is wide in the east, and narrow in the west. The widest stretch of this wedge-like mountain is measured at 8.5 kilometers. Wuzhi is a monoclinical mountain that travels at an east-northeast and west-southwest angle, with a south-southeast strati-graphic incline of 15 to 35 degrees. It consists of Oligocene and Miocene strata. The difference in hardness between sandstone and shale contributes to the prominently-gradient landform of the area.

C. The Nangang Mountain Range

The Nangang Mountain Range is located between the downstream Keelung River and the Jingmei River, extending towards east-northeast and west-southwest. The watershed inclines noticeably toward the south. For the most part, it is a consequent valley, with a prominent northern hill. Yet some of the area appears to be a strike valley, such as the Sifen River. Overall, the area is a lattice drainage system. The Sifen River runs along an oblique-axe direction. A

knickpoint composed by the Nangang Fault sits downstream at Lishan Bridge. The river valley above the knickpoint is wider and shallower.

D. The Fushi Mountain Range

The Fushi Mountain Range extends from Shuangxi to Xindian, passing Shiding District and Pingxi District in New Taipei City. Its western stretch sits on the south of the Jingmei River. This particular stretch starts from Shijian Mountain (Erge Mountain and Cige Mountain), and travels westward to pass Nanbangliiao Mountain (the western peak of Erge Mountain), Ejiaoge Mountain (Egongji Mountain), Dailaokeng Mountain (Degao Hill and Zhusong Hill) to Yuantangkeng Mountain. Located inside Taipei City proper, Shijian is a hogback ridge. Muzha Sightseeing Tea Garden is located on the northern slope that connects Ejiaoge Mountain with Dailaokeng Mountain. Another crest line extends west-northwest from Shijian Mountain as a parallel ridge, and it drops sharply by 120 meters when it reaches the west side of Houshan Hill. It reaches Taipei Zoo after passing Zhinan Temple. The mountain has a prominent longitudinal valley. A great number of giant's kettles can be found along the Maokong River, a branch of the Zhinan River. The riverbed of the Maokong River is therefore heavily potholed and uneven. In the Taiwanese dialect, the potholes are called, "Niao Kang", from which the name "Maokong" was derived.

3. Climate

Taiwan is located where the Eurasian Plate and the Pacific Ocean meet, and has a subtropical monsoon climate. The island is heavily affected by monsoons, typhoons, air masses, and weather fronts; the island's complex terrain also contributes to frequent natural disasters. Taipei, located at the northern tip of the island, is also affected by Taiwan's complex weather patterns.

During winter, the island experiences continental high pressure systems from Mongolia and Siberia, and is influenced primarily by the northeastern monsoon climate. In summer, the island's weather is controlled by the marine high-pressure system, and has a humid,

southwestern monsoon climate. Meanwhile, the island's high mountains and the surrounding oceans contribute to the city's striking seasonal differences. In recent years, global warming and climate change have intensified abnormal weather patterns throughout the seasons. Winter has become unusually warm due to the El Niño and La Niña phenomena.

The meteorological data for 2014 collected by the Taipei Weather Station and provided by the Central Weather Bureau are as follows:

Annual accumulated rainfall: 2147.3 mm
 Annual one-day maximum rainfall: 242 mm (May 21, 2014)
 Number of rainy days: 140
 Annual average temperature: 23.5°C
 Absolute yearly highest temperature: 37.8°C (September 16, 2014)
 Absolute yearly lowest temperature: 7.8°C (February 11, 2014)
 Annual average relative humidity: 71.8%

Part 2 Taipei's History and Development

1. The Origin of the Name "Taipei"

In 1875, first year of Emperor Guangxu's reign, Imperial Commissioner Shen Bao-zhen asked for permission to establish the Taipei Prefecture in Mengjia (a general term used to describe downtown Taipei) from the Qing Imperial Court, and built the Taipei Prefecture Office (located in today's Zhongzheng District), making Taipei an administrative district. In 1884, the 10th year of Emperor Guangxu's reign, the construction of a walled city was completed.

After Taiwan was established as a province of China, the first Governor, Liu Ming-chuan set up his office in Taipei Prefecture, where development revolved around the inner city and Dadaocheng. These two areas, together with Mengjia, later became the heart of the city and were called the "Three Areas."



Shen Bao-zhen, who proposed the establishment of Taiwan Province and Taipei Prefecture



Liu Ming-chuan, the first Governor of Taiwan

During the Japanese Colonial Era, the *Sotokufu* (the Governor-General's Office) declared municipal organization for Taiwan. During the 9th year of the Japanese Taishō Period (1920), Taipei was made a Prefecture City in keeping with the Organization Statute and the Taipei Municipal Office was founded. The name "Taipei City" was thus officially coined.



The Taiwan Governor's Office in the Qing Dynasty



Bustling boat traffic along the shore of Dadaocheng by Danshui River





Taipei City Hall in November, 1945

2. Home to the Katagalan People

Before the Han Chinese settlers arrived, the Taipei Basin was the home of the aboriginal Ketagalan Tribe, who made a living by gathering, fishing, hunting, and nomadic cultivation. The Ketagalan people were among the first Pingpu tribes to inhabit Northern Taiwan, living in areas as far apart as present-day Taoyuan in the south and Sandiaoling and Yilan in the north. They had established their homes in Keelung, Danshui and Taipei. According to Kanori Ino, a Japanese scholar, the Ketagalan settlement in Sandiaoling was established near the western seashore, via Keelung, Jinbaoli, Fuguijiao, and Huwei (Danshui), following the Keelung River into the Taipei Basin; those who settled in Xizhi District were known as the Fengzisi Community, those who inhabited the Songshan district formed the Xikou Community, those who settled down in Dadaocheng formed the Guibeng Community, and those in Dalongtong, the Dalangbeng Community; some also crossed the Xindian River to form the Baijie and Xiulang Communities. They were the earliest documented inhabitants of the Taipei Basin.

3. From the Dutch to the Spanish to Koxinga in the Ming Dynasty

In the 16th century, junks from Mainland Chinese coastal areas sailed between China and Taiwan, and mariners engaged in trade and fishing in the Keelung and Danshui regions. In the 2nd year of the Ming Emperor Tianqi's reign (1622), the Dutch invaded Dayuan (now

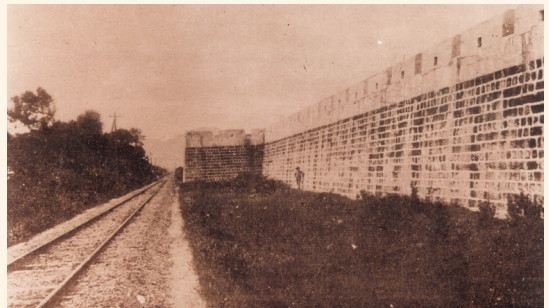
Anping, Tainan). In the 6th year of Ming Emperor Tianqi (1626), the Spaniards occupied Keelung and Danshui and built fortresses, where they launched missionary and commercial activities. In the 15th year of the Ming Emperor Chongzhen's rule (1642), the Dutch moved north and expelled the Spaniards, taking over their outposts in Keelung and Danshui to begin trade activities and missionary work. In the 15th year of the Ming Emperor Yongli's reign (1661), Koxinga (Zheng Cheng-gong) landed at Luermen, besieged Fort Zeelandia, expelled the Dutch and took possession of Taiwan. He set up Chengtian Prefecture, and established Wannian and Tianxing Counties. Taipei belonged to Tianxing County at that time. Koxinga sent the renowned General Huang-an to garrison Danshui, and implemented the *Tuntian* system. Troops were garrisoned along the Danshui River to develop areas in present-day Guandu and Beitou.

4. Development During the Qing Dynasty

In the 22nd year of the Kangxi Emperor's reign (1683), Taiwan was reclaimed as part of Qing territory. The following year, Taiwan Prefecture was established, and given jurisdiction over the three counties of Zhuluo, Taiwan and Fenshan. Subsequently, immigration from Fujian and Guangdong Provinces to Taiwan greatly increased. In the 48th year of the Kangxi Emperor's reign (1709), after Chen Lai-zhang asked for imperial permission to develop the Tagala area (today's Mengjia, Xinzhuang to Dalongdong regions), increasing numbers of Han Chinese settlers moved to Northern Taiwan. During the Qianlong Emperor's reign, Taipei's transformation began in Mengjia's Sweet Potato Street (named as such due to the trade in sweet potatoes between Han settlers and aboriginal people) where the Xindian and Danshui Rivers meet, and the city gradually prospered, becoming the island's political, military and business hub. During the Jiaqing Emperor's reign, Mengjia was lauded in a popular catchphrase – “Tainan first, Lugang second, Mengjia third” as the third-largest harbor city in Taiwan. During the Tongzhi Emperor's reign (1862-1874), the tea trade in Dadaocheng gave



Taipei's tea industry in its prime in the earlier days



Taipei City Wall and City Gate in the Qing Dynasty



Taipei's Auxiliary South Gate – past and present



Taipei's East Gate (the Jingfu Gate) – past and present



the town a significant financial boost, making "Taipei Tea" a highly sought-after commodity in the international trade market.

In the 10th year of the Guangxu Emperor's reign (1884), Taipei was made a city, and in the 13th year of the Guangxu Emperor's reign (1887), Taiwan was officially made a province. Taiwan's first governor was Liu Ming-chuan, and during his term in Taipei, he developed Taipei City with foresight. Railways, roads and schools were built. Taipei City was designated the administrative district, while Dadaocheng was developed into a business district. The

present-day Guide Street area was designated a foreigners' community. This particular urban planning assignment later provided a sound development foundation for Taipei City.

5. The Japanese Colonial Era

After Japan occupied Taiwan in the 21st year of Emperor Guangxu's rule (1895), the Taiwan *Sotokufu* (Governor-General's Office) was established in Taipei City. Between 1899 and 1901, or the 32nd and 34th years of the Japanese Meiji Period, the Japanese expanded the streets of Taipei and improved the drainage



systems. In the 38th year of the Meiji (1905) Period, Japanese colonists demolished the Taipei City walls built during the late Qing Dynasty, and built roads along the foundation of the original walls, connecting Mengjia, the Inner City and Dadaocheng and expanding Taipei's administrative area. In 1920, or the 9th year of the Japanese Taishō Period, the Taipei Prefecture City was established, its administrative district extended beyond the aforementioned 3 districts to include today's Daan, Zhonglun and Songshan Districts in East Taipei; the colonists had also made plans for a city suitable for a population of 600,000.

6. Administrative District Structuring after Retrocession

Upon Taiwan Retrocession in 1945, Taipei was designated a provincial municipality. In October of the same year, the Japanese administrative system was abolished, and the Taipei City Government was instituted. Under the new system, the city was divided into 10 administrative districts: administratively, districts

were divided into boroughs, and boroughs into neighborhoods. In 1949, the Central Government relocated to Taiwan, and in 1950, local autonomy was implemented on the county and city level. For the first time ever, a city council election was held in Taipei City. A democratic and political system was inaugurated upon the establishment of a city council. On December 31, 1966, in light of Taipei being the temporary wartime capital, as well as the political, military, cultural and economical center of Taiwan, the President declared Taipei a directly-controlled municipality on July 1, 1967. A year later, on July 1, 1968, Jingmei, Muzha, Nangang, Neihu, Shilin and Beitou Townships were annexed into Taipei. At that time, there were a total of 16 administrative districts in Taipei City.

On March 12, 1990, Taipei's administrative districts went through another reorganization. 12 districts were subsequently established. They are: Datong, Zhongzheng, Wanhua, Zhongshan, Shilin, Beitou, Songshan, Nangang, Neihu, Xinyi, Daan, and Wenshan. This division has remained in effect to the present day.



The Three-Lane artery road developed during the Japanese Colonial Period



Zhonghua Road at present after expansion



Taipei City Hall and the Taipei 101 skyscraper



Part 3 Demographic Structure and Composition

One year after the Retrocession of Taiwan in 1945, a national census was conducted (in 1946). The population at that time was 271,754. In 1968, the six districts of Neihu, Nangang, Muzha, Jingmei, Shilin and Beitou were rezoned and annexed into Taipei City, and Taipei's population at the end of that year totaled 1,604,543. By the end of 2014, the population had reached 2,702,315 (1,295,636 males; 1,406,679 females), an increase of by 15,799 (that of males had increased by 5,691; that of females by 10,108) from 2013.

1. Demographic Distribution

Taipei's population is spread across the city's 12 districts. Due to the differing terrain, socioeconomic development and time of development of the districts, the population is unevenly distributed. Daan, Shilin and Neihu Districts are the most populated.

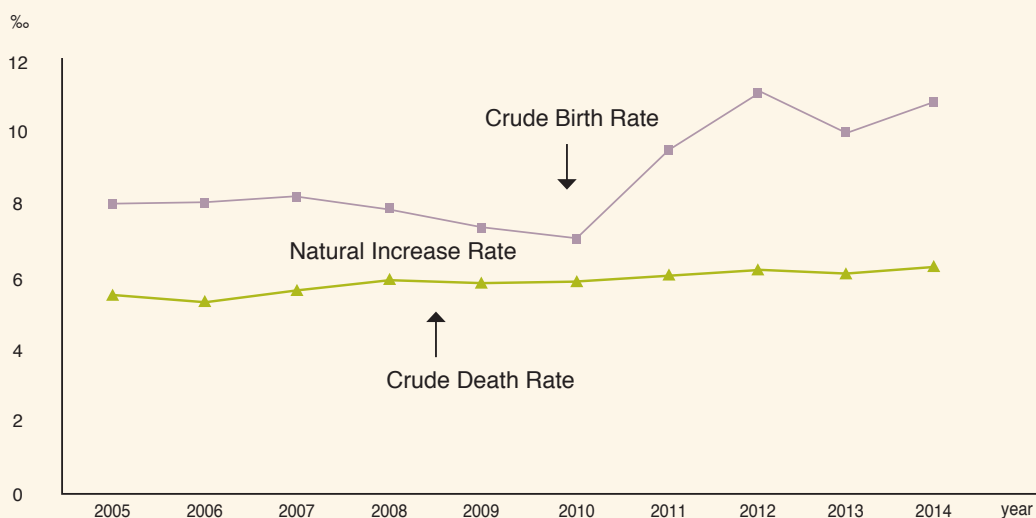
(1) Population Density

By the end of 2014, the population density was 9,942 people per square kilometer. By

district, Daan was the most densely populated, with 27,610 people per square kilometer, whereas Beitou was the most sparsely populated, with 4,532 people per square kilometer.

(2) Births and Deaths

The crude birth rate in 2014 was 10.77‰, indicating a 0.8‰ increase from the previous year. The crude death rate was 6.387‰, suggesting a 0.27‰ growth from 2013. Shifts in social climates and financial concerns have affected people's willingness to give birth and raise children, causing the birthrate to drop. Nevertheless, the "Have a Care-Free Pregnancy" campaign by the City Government launched in 2011 has buoyed the birthrate. The population of elderly citizens in Taipei City has risen consistently in the past decade. Governments are now hard at work to prevent population decline and the rapid aging of population stunting the nation's economic development, while encouraging reasonable population growth. These issues demand immediate attention.



Source: Department of Civil Affairs, Taipei City Government

Figure 1 Birth and death rates of Taipei Demographics in the last decade



2. Demographic Composition

Demographic composition reveals a wealth of information, including the makeup of the population, the nature and causes of specific social issues, and the connection between communities and their socioeconomic development. Population composition is an important indicator of social and economic shifts; it is also a crucial frame of reference for the government, on which their present and future social welfare policies are based.

(1) Age Distribution

Generally speaking, the greater the number of laborers in a population, the lower its dependency ratio. A nation's economic growth benefits tremendously from a large, productive, population. By the end of 2014, the younger population (between the ages of 0-14) was 382,795 and the working adult population (between the ages of 15-64) was 1,938,993, while the elderly population (above 65 of age) was 380,527. The dependency ratio was 39.37%, up by 0.91% from 2013.

(2) Marital Status

In 2014, the number of couples who registered for marriage was 19,139 and the crude marriage rate was 7.10‰. The number

of couples filing for divorce was 5,528 and the crude divorce rate was 2.05‰. Compared with the year before, the crude marriage rate was up by 0.06‰, while the crude divorce rate was down by 0.02‰.

(3) Distribution of Aborigines

Taiwan's aborigines consist of the Amis, Atayal, Paiwan, Bunun, Rukai, Puyuma, Tsou, Saisiat, Yami, Thao, Kavalan, Taroko, Sakizaya, Seediq, Saaroa, and Kanakanavu Tribes. By the end of 2014, the aboriginal population of Taipei City was 15,581. The largest aboriginal population was the Amis, while the Saaroa, and Kanakanavu Tribes had the fewest number of people. Most of the aborigines live in Neihu, Wenshan, and Nangang Districts.

(4) New Immigrant and Foreigner Population

Statistics show that the number of new immigrants in Taipei City has grown steadily. In a move to create an immigrant-friendly environment, and help new immigrants adapt to married life in a new country, the City Government has launched a robust outreach and counseling program. The "Outreach Counseling Policy and Implementation Plan for New Immigrants in Taipei City" was issued; and the "Commission for Outreach Counseling and Implementation for New Immigrants" was established. Since 2000, the Department of Civil Affairs has launched a series of enrichment camps and seminars for new immigrants. By December, 2014, 334 workshops had been held, attended by 10,733 people; many multicultural promotion campaigns have also been hosted. In addition, New Immigrants Halls have been set up in Wanhua and Nangang. Statistics indicate that by the end of December, 2014, 160,111 people had visited the halls to make new friends. Additionally, a "New Immigrants Area Taipei City" website was set up. By the end of December, 2014, the site had received 2,216,637 hits.

Additionally, personal visits by borough chiefs or borough directors were launched as part of the community outreach to new immigrants. By the end of December, 2014, more than 10,000 new immigrant families had

Table 1 Taipei City Age Structure over the Past Decade

Year	Age 0-14	Age 15-64	Age 65 and over
2005	17.11	71.60	11.29
2006	16.50	71.86	11.64
2007	16.07	71.97	11.96
2008	15.56	72.13	12.31
2009	15.10	72.30	12.60
2010	14.66	72.67	12.67
2011	14.45	72.79	12.76
2012	14.33	72.63	13.04
2013	14.28	72.22	13.50
2014	14.17	71.75	14.08

Source: Department of Civil Affairs,
Taipei City Government

Unit: %



Exhibition of Landmark Achievements by New Immigrants in Zhongzhen District



The Taipei City New Immigrants' Hall in Wanhua

received these personal visits, where they experienced personal and heart-warming support. These measures are fashioning Taipei into a dynamic, multicultural immigrant city.

To highlight the extraordinary value of mutual learning, mutual respect, and the understanding of cultural differences between new immigrants and their families, the Department of Civil Affairs has been organizing the "Joint Commencement Ceremony for New Immigrants Workshop" since 2008, showcasing the amazing learning milestones of new immigrants. 2014 marked the Workshop's seventh anniversary. The number of participants and family members had reached 7,100. Also, a special design exhibition was hosted to showcase the partnership between community members and new immigrants. A multicultural exhibition was held for this purpose that combined the community's local resources. The event featured fun contests, exotic cuisine and a landmark achievements exhibition, and

successfully attested to Taipei City's strong support for new immigrants. Between 2007 and the end of December, 2014, 13 such events were held, and attended by a total of 20,200 participants.



A joint commencement ceremony for new immigrants workshop



Exhibition Taipei – New Immigrants and a Multicultural Cityscape

Population-Related Terms

Crude marriage rate: the number of married couples as a percentage of the overall population in a certain period.

Crude divorce rate: the number of divorced couples as a percentage of the overall population in a certain period.

Crude birth rate: the number of live births per 1,000 people.

Crude death rate: the number of deaths in a year as a percentage of the total population, the number of deaths per 1,000 people.

Dependency ratio: A simple measurement of the burden on the working population of dependents.



Part 4 Political Systems and Administration

Taipei City is a self-governing body established in accordance with the laws of the Republic of China. With the exception of judicature, national defense and diplomacy, it enjoys substantial autonomy and is under the direct jurisdiction of the Executive Yuan. It is the country's political, economic and cultural hub. Taipei is noted for its thriving business and industrial development, with robust and well-developed economic, cultural, transportation and administration facilities.

1. The Evolution of Taipei's Administrative System

Taipei City has been Taiwan's political, economic and cultural capital since the Japanese Colonial Era, including after the R.O.C. government retreated to Taiwan. In 1945, after the Taiwanese Retrocession, Taipei City became a "provincial city" under the direct jurisdiction of the Provincial Government. In light of the city's strategic significance, Taipei was upgraded into an "Executive-Yuan-governed municipality" in 1967 and remains so to this day.

(1) Direct Control by the Provincial Government

After the Taiwanese Retrocession, Taipei was designated a "provincial city" under the jurisdiction of the Provincial Government to be an administrative body. The city government was established and a mayor was appointed by the Central Government. In 1946, an elected body, the "City Joint Council" was re-established, with members elected by representatives of Taipei's residents. The city was divided into 10 districts, with a legal representative in each. District Councils and Representative Assemblies were set up, where residents from each borough elected District Representatives, and the head of each district was elected by the District Representatives. Local autonomy was implemented in 1950, and the City Government and City Council were set up as the administrative and legislative organs,

respectively. Districts no longer had designated legal representatives; District Offices were retained but District Assemblies were abolished. The District Offices were subordinate bodies of the City Government.

(2) Direct Control by the Central Government

In 1967, Taipei was made an Executive-Yuan-governed municipality. The following year, 6 neighboring townships in New Taipei City were annexed into Taipei City; the number of administrative districts in Taipei grew from 10 to 16. After reorganization, Taipei City became an administrative body, under which the City Council and City Government served. Members of the City Council were elected directly by citizens, but the head of the City Government (the mayor) was appointed by the Central Government, not elected. In 1990, the 16 districts were re-drawn into 12 for the sake of convenience of management and resource allocation. However, the system itself was not changed. It was not until 1994, when the city became a legal person under the "Self-Governance Act for Executive-Yuan-governed Municipalities" and the Mayor was elected by the people at the end of the year, that Taipei regained its self-governing status. Although the laws and regulations have changed since then, Taipei City has retained its status as an autonomous legal entity.

In accordance with the current *Local Government Act*, Taipei's administration is divided into districts; and, for the convenience of management, under districts there are boroughs, and under boroughs there are neighborhoods. Since 1973, there have been 6 adjustments to borough structures; the most recent one took place in July, 2010. As of November, 2014, there were 456 boroughs and 9,574 neighborhoods in Taipei.

2. Taipei's Current System and Powers

The Local Government Systems Act serves as the legal basis for the organization of Taipei City. Taipei City is a legal entity; and the City Government is a top-tier, unitary government

system, with no secondary administrative organ. It has an administrative body – the Taipei City Government- and a legislative organ – the Taipei City Council- responsible for administrative and legislative decisions, respectively. The rights and obligations of citizens of Taipei, the organization structure, rights, and obligations of Taipei City Council, and the interactions between the two authorities are described below:

(1) Rights and obligations of Taipei citizens

A. Rights of citizens

- The right to elect and impeach local public officials.
- The right to exercise initiative and referendum concerning local self-governing affairs.
- The right to use local public facilities.
- The right to enjoy local education, social welfare, medicine and health care in accordance with the laws and self-governing laws.
- The right to request disclosure of local government information.
- Other rights protected and endowed by the law and self-governing laws and regulations.

B. Obligations of citizens

- To abide by government laws and regulations.
- To pay government taxes.
- To fulfill other obligations in accordance with the law and local government self-governance.

(2) The Organization of Taipei City Government

The administrative organ of Taipei is the City Government. It has a leadership system and a Mayor, who represents the city and oversees city affairs. The mayor is chosen by the people in an election (Taipei Mayor Hau Lung-bin was Taipei's fifth elected mayor as of 2014). The Mayor has a term of four years and can be re-elected to serve two terms in succession. There are three Deputy Mayors in place to assist the Mayor with all tasks; they leave office

at the same time as the Mayor. A Secretary-General is also in place under the command of the Mayor to assist with governmental affairs. Under the City Government, there are 22 departments in charge of civil affairs, finance, education, industrial development, public works, transportation, social welfare, labor affairs, police administration, health, environmental protection, urban development, cultural affairs, fire department, the rapid transit system, the Taipei Feitsui Reservoir Administration, information and tourism, land, compulsory military service, sports, information, technology, and legal affairs. Five departments and offices are in charge of the secretariat, budgets, accounting and statistics, personnel, government ethics and civil servant development. There are four commissions: the Research, Development, and Evaluation; Urban Planning, the Indigenous Peoples ; and Hakka Affairs Commissions. The Taipei Water Department and the Taipei Rapid Transit Corporation are also placed under the City Government. Finally, Taipei's 12 Districts are directly subordinate to the City Government.

(3) Municipal Authorities and Operation Models of the City Government

As a legal entity, Taipei City is a locally autonomous organization. It is in charge of 13 matters of self-government: organizational and administrative management, finance, social services, educational, cultural and sports affairs, labor administration, urban planning and construction, economic services, water resource management, health and environmental protection, transportation and tourism, public security, business operation and management, and other matters on which it has been endowed with jurisdiction by law.

To enhance procedural efficiency, a City Affairs Forum has been established in accordance with the Rules of Procedure for the City Taipei's City Government's Affairs Forum; the Forum is the City Government's highest decision-making body. It consists of the Mayor, Deputy Mayors, the Secretary-General, the Deputy Secretary-General, and top-tier chiefs such as Commissioners, Division Chiefs, and



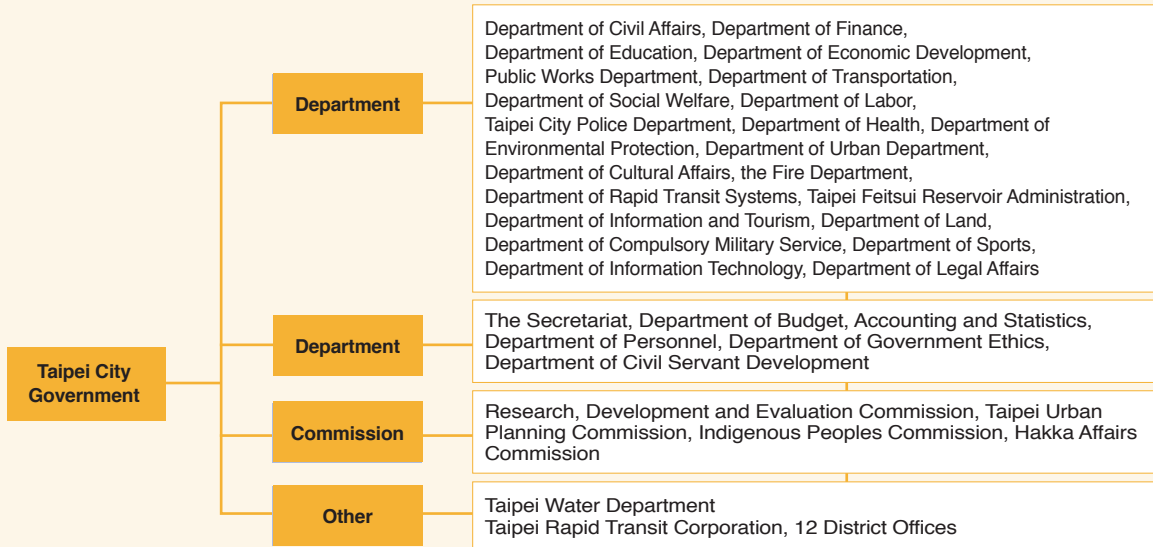


Figure 2 Taipei City Government Organizational Chart

other persons nominated by the Mayor. It is convened and chaired by the Mayor. The Forum discusses and determines the following:

- A. Taipei City Government policy planning and budget
- B. Proposals or reports to be reviewed by Taipei City Council
- C. Self-governance and regulations for the Taipei City Government and its business operations.
- D. Self-governing rules of Taipei
- E. Guidelines for the organizational rules of Taipei City Government's subordinate organs and establishment of task forces
- F. Matters concerning the Taipei City Government and other organs
- G. Tasks assigned by the mayor.
- H. Other key issues related to Taipei City's policymaking

The Taipei City Government may commission its subordinate bodies or authorize an unaffiliated administrative organ to carry out operations within its power. It can also, when necessary, commission private organizations or individuals to implement its operations.

The City Affairs Forum is characterized by a collegiate system. The City Government, however, adopts an executive system, under which the mayor is responsible for all political affairs and their outcomes; therefore, forums are rarely carried out according to the collegiate system

as the mayor makes final decisions. The City Affairs Forum, therefore, acts as a think tank that provides the Mayor with ideas and opinions but is not an executive institution. The actual executive authorities are organizations subordinate to the City Government.

(4) Constraints on the Execution of City Government Powers

Taipei City is a self-governing body, an R.O.C local self-governing unit, and is not independent from the country; therefore, it must execute assignments commissioned by the Central Government. Should Taipei City's self-governance decisions violate the Constitution, laws or regulations, they will be revoked, altered, repealed or terminated by the Central Government.

Should any commissioned matter violate the Constitution, laws and regulations, Central Government statutes, or exceed the Taipei City Government's designated authority, the Central Government also has the right to revoke, alter, repeal or terminate its implementation. A request for constitutional interpretation by the Judicial Yuan is allowed to determine whether a self-governed matter violates the Constitution, laws and regulations, or Central Government statutes; before the constitutional interpretation, the Central Government may not revoke, alter,

repeal or terminate the City Government's actions. The City Government's enforcement powers are, of course, supervised by the City Council.

(5) Organizational Chart of the Taipei City Council

The Taipei City Council is composed of members of the City Council, who are directly elected by the people. Elections are held in the six electoral districts which span Taipei's 12 administrative districts to elect 60 councilors. In order to ensure the rights of aborigines, one aboriginal councilor representing the aboriginal electorate living in the cities (the 7th electoral district), and one other aboriginal councilor representing those living in mountainous regions (the 8th electoral district) are elected.

The Taipei City Council has a Speaker (the 11th Speaker is Ms. Wu Bi-chu) chosen by all of the Councilors, who represents the City Council. One Deputy Speaker, one Chief Secretary General and one Deputy Chief Secretary General are also elected. The Chief Secretary-General is under the command of the Speaker, and handles council tasks and supervises staff; the Deputy assists the Chief with all council tasks. There are sections and offices set up under them for various duties.

(6) Powers and the Operation Model of Taipei City Council

As a collegiate organization, all members of Taipei City Council are entitled to the same rights and obligations. Their responsibilities are as follows:

- A. Decide Taipei City's laws and regulations.
- B. Decide Taipei City's budget and expenses.
- C. Decide special taxes, provisional taxes, and additional taxes.
- D. Decide the management of city assets.
- E. Decide self-governing rules for the Taipei City Government and its affiliated organs.
- F. Review and vote on proposals put forward by the Taipei City Government.
- G. Consider and approve the city's final audit report.
- H. Review and vote on proposals put forward by councilors of the Taipei City Council.
- I. Accept petitions from the public.

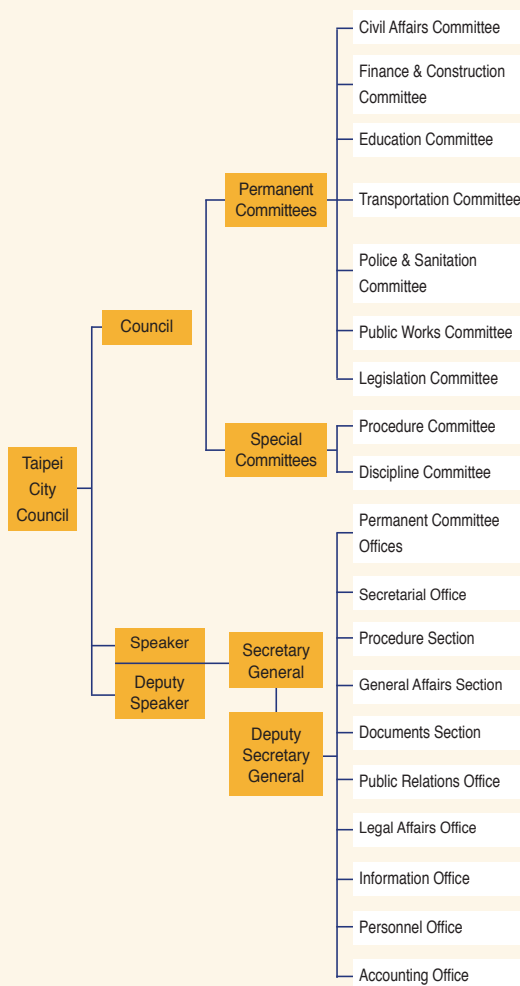


Figure 3 Organizational Chart of the Taipei City Council

- J. Other powers as stipulated and granted by law or the Central Government.

The Taipei City Council has an assembly that exercises authority using a collegiate system. The assembly meets when it is established and thence once every six months. The assembly is convened by the Speaker; if the assembly is not convened according to regulations by the Speaker, it can be convened by the Deputy Speaker; if it is not held according to regulations by the Deputy Speaker, it can be convened by a Councilor chosen by more than



half of the Councilors. Ad-hoc assemblies can be held at the request of the Mayor, the Speaker, over one-third of City Councilors, or whenever the Taipei City Government refers a proposal for reconsideration. Decisions are made by majority vote in accordance with the procedure required by law. To ensure smooth operation, the "Procedural Committee" has been set up to decide and approve agendas and other procedural issues. To ensure professionalism and efficiency, the following seven committees have been established: the Civil Affairs Committee, Finance and Construction Committee, Education Committee, Transportation Committee, Police and Sanitation Committee, Public Works Committee and Legislation Committee. They discuss motions within their own fields and send approved cases to the council assembly for consideration. There is also a Disciplinary Committee that reviews disciplinary cases and imposes the following penalties according to the seriousness of the situation: verbal apology, written apology, admonition, and suspension from the assembly.

The following are the ways an individual City Councilor exercises her/his authority:

- A. Attending meetings and reviewing proposals (all committees and plenary meetings)
- B. Interpellation: during council meetings, the council members can invite the mayor and top-level chiefs representing government agencies to stand for questioning.
- C. Putting forward motions: proposals/motions may be presented and deliberated under a quorum agreement.
- D. Debriefing: listening to policy and special case reports.

The aforementioned rights are intended to ensure that the councilors are able to fulfill their responsibilities.

(7) Constraints on the Taipei City Council and Councilors' Powers

The authority exercised by the City Council and the Councilors is not without limits; they are constrained by the following principles:

- A. When a self-governing decision made by the council violates the Constitution, laws and regulations or other legitimate legislation, the decision is deemed invalid; a request to the Judicial Yuan for constitutional interpretation

is allowed only when there is unanimity as to the existence of conflict between laws and regulations.

- B. Resolved commissioned items in conflict with the Constitution, laws or Central Government statutes shall be null and void.
- C. Any decisions made on budgets shall not be a resolution for increased expenditure.
- D. Avoiding conflicts of interest: Council members shall avoid conflicts of interest; they shall not engage in examining and voting on proposals that may benefit their own personal interests.

(8) The Relationship between the City Government and the City Council

The relationship between the City Government and the City Council is stipulated by law and system policy. In sum, this relationship is characterized by the following:

- A. Supervising and being supervised: through holding reviews and hearings, the City Council represents citizens by monitoring to the City Government's policy plans, budget and important policy implementation reports; the city council also imposes supervision on City Government officials by questioning them.
- B. Checks and balances: the City Council limits the expansion of administrative authority by legislation; the City Government, on the other hand, exercises its right of reconsideration to prevent the city council from making laws and regulations or approving proposals that are too difficult to implement.
- C. Division of labor and cooperation: the City Government formulates administrative plans and administrative regulations on the basis of policy implementation; City Council members represent the people and shall take citizens' welfare and needs into consideration when carefully reviewing all proposals made by the city government.

(9) Operation of the Taipei City Government and the Taipei City Council

The operation of power between Taipei City Government and Taipei City Council is carried out through the aforementioned legal protocols, such as policy reports, special case reports, proposal reviews, questioning, coordination,

hearings and reconsideration. The following kinds of informal coordination may also be adopted to resolve disagreements:

- A. Informal contact between the heads of the Taipei City Government's Departments/Bureaus and Councilors.
- B. Mediation conducted through political parties (the ruling party caucus).
- C. Mediation conducted through political party meetings.
- D. Integrated mediation conducted by the Central Government.

The Taipei City political systems, its relationship with the City Council and the operations described above are intended to safeguard the rights of the people and restrict the unlimited expansion of administrative and legislative powers, both the Council and the City Government doing their utmost in pursuit of the joint development of city government's policies to ensure the well-being of all citizens.

Conclusion

Since its establishment in 1884, the political systems and constructions of different eras, and the unceasing dedication of its residents have transformed Taipei from an agricultural society into the economic and political capital of Taiwan. Thanks to a unique city airport, Songshan Airport, convenient city roads, a mass transit

network, highways, electrified railways and a high-speed railway, plus convenient access to Keelung Harbor, Taipei Harbor and Taoyuan International Airport, Taipei City is now noted for flourishing international trade and business activities.

Part of Taipei's social development is defined by the increase in Taipei citizens marrying foreign and Mainland Chinese spouses. Their immigration to Taipei brings an exotic flavor to Taipei's cultural landscape, as can be seen from the many foreign restaurants, foreign lifestyle and dining cultures that can be easily found in this multi-cultural society.

A series of urban renewal projects implemented by the City Government has improved the living environment of Taipei: the "Blue Highway" river cruises, the revitalization of the Danshui River, "Project: Garden City," road and arcade-leveling schemes, and other improvements to the city environment and cityscape have made Taipei an even more livable city. Taipei City boasts an extraordinary competitive edge, thanks to the Central Government's commitment to a free-trade economic policy. Taipei's success has also inspired other local administrations in Taiwan to upgrade their infrastructure. Taipei's future remains bright as she shines in the international market as a great city.

Feature Report

Administrative Nomenclature

- 10 Administrative Districts: In October, 1945, the Taipei Municipal Office under Japanese Occupational Rule was abolished, and the City Government was instituted; ten administrative districts were in place – Songshan, Zhongshan, Daan, Guting, Chengzhong, Jiancheng, Yanping, Datong, Longshan and Shuangyuan,.
- 6 Townships and Villages: Shilin, Beitou, Neihu, Nangang, Jingmei and Muzha
- 16 Administrative Districts: in 1968, six further townships and villages were subsumed into Taipei City to make a total of 16 administrative districts – Songshan, Zhongshan, Daan, Guting, Chengzhong, Jiancheng, Yanping, Datong, Longshan, Shuangyuan, Shilin, Beitou, Neihu, Nangang, Jingmei and Muzha.
- 12 Administrative Districts: in 1990, the 16 administrative districts were re-drawn, creating 12 districts – Songshan, Xinyi, Daan, Zhongshan, Zhongzheng, Datong, Wanhua, Wenshan, Nangang, Neihu, Shilin and Beitou.
- 456 boroughs, 9,571 neighborhoods: Songshan: 33 boroughs, 762 neighborhoods. Xinyi: 41 boroughs, 914 neighborhoods. Daan: 53 boroughs, 1,029 neighborhoods. Zhongshan: 42 boroughs, 872 neighborhoods. Zhongzheng: 31 boroughs, 584 neighborhoods. Datong: 25 boroughs, 524 neighborhoods. Wanhua: 36 boroughs, 722 neighborhoods. Wenshan: 43 boroughs, 995 neighborhoods. Nangang: 20 boroughs, 444 neighborhoods. Neihu: 39 boroughs, 909 neighborhoods. Shilin: 51 boroughs, 989 neighborhoods. Beitou: 42 boroughs, 827 neighborhoods.
- 8 Electoral Districts: First: Shilin and Beitou. Second: Neihu and Nangang. Third: Songshan and Xinyi. Fourth: Zhongshan and Datong. Fifth: Zhongzheng and Wanhua. Sixth: Daan and Wenshan. Seventh: Aborigines living in the city. Eighth: Aborigines living in mountainous regions

