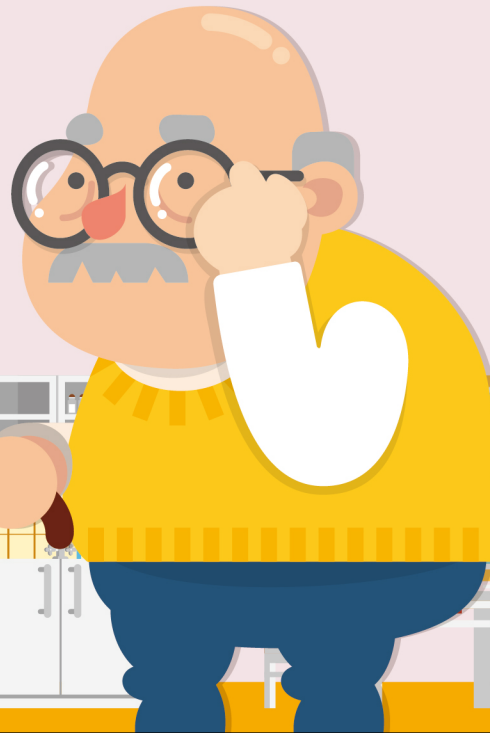


Applicants

- ✓ Senior citizens aged over 65 with physical or mental incapacity
- ✓ Indigenous people aged over 55 with physical or mental incapacity
- ✓ People with dementia aged over 50
- ✓ Citizens with mental or physical disability and incapacity
- ✓ Solitary or frail senior citizens aged over 65 who only require assistance with Instrumental Activities of Daily Living (IADLs)



1966

Long-Term Care Service to Your Home

Service Hours

Monday to Friday
08:30-12:00 | 13:30-17:30

Dial the Long-Term Care hotline

Free for first 5
minutes

1966

Long-Term Care Plan 2.0 Service next door



'Long-Term Care Plan 2.0'
- We take care of you all!



Ministry of Health and Welfare
Cares for You

Application

3 ways of application:

- ▶ Contact the Long-Term Care Management Centers
- ▶ Dial the Long-Term Care hotline- 1966
- ▶ Transfer service at discharge from hospital

The care managers assess the needs at your home

Jointly discuss care plan

Obtain long-term care service



Service items and payment principle

Care and professional service

Home care, community care, professional service, etc.

Monthly payment of

NT\$10,020-NT\$36,180

according to the level of disability

General household copayment = Payment amount X 16%
Medium-low income household copayment = Payment amount X 5%

Auxiliary appliance service and home accessibility improvement services

The purchase or rental of the assisting instruments; and home accessibility improvement services

NT\$40,000

every 3 years

General household copayment = Payment amount X 30%
Medium-low income household copayment = Payment amount X 10%

Transportation service

Subsidy for going to a medical institution for medical treatment or rehabilitation

According to the level of disability and urban and rural distance, monthly payment of

NT\$1,680-NT\$2,400

Calculated by distance :

General household copayment = Payment amount X 21%~30%
Medium-low income household copayment = Payment amount X 7%~10%

Respite service

Provide short-term care service to allow respite for family caregivers

Yearly payment of

NT\$32,340-NT\$48,510

according to the level of disability:

General household copayment = Payment amount X 16%
Medium-low income household copayment = Payment amount X 5%

- Primarily provide service
- Low income households are fully subsidized by the government and exempted from the copayment
- The public shall assume expenses in excess of government subsidy