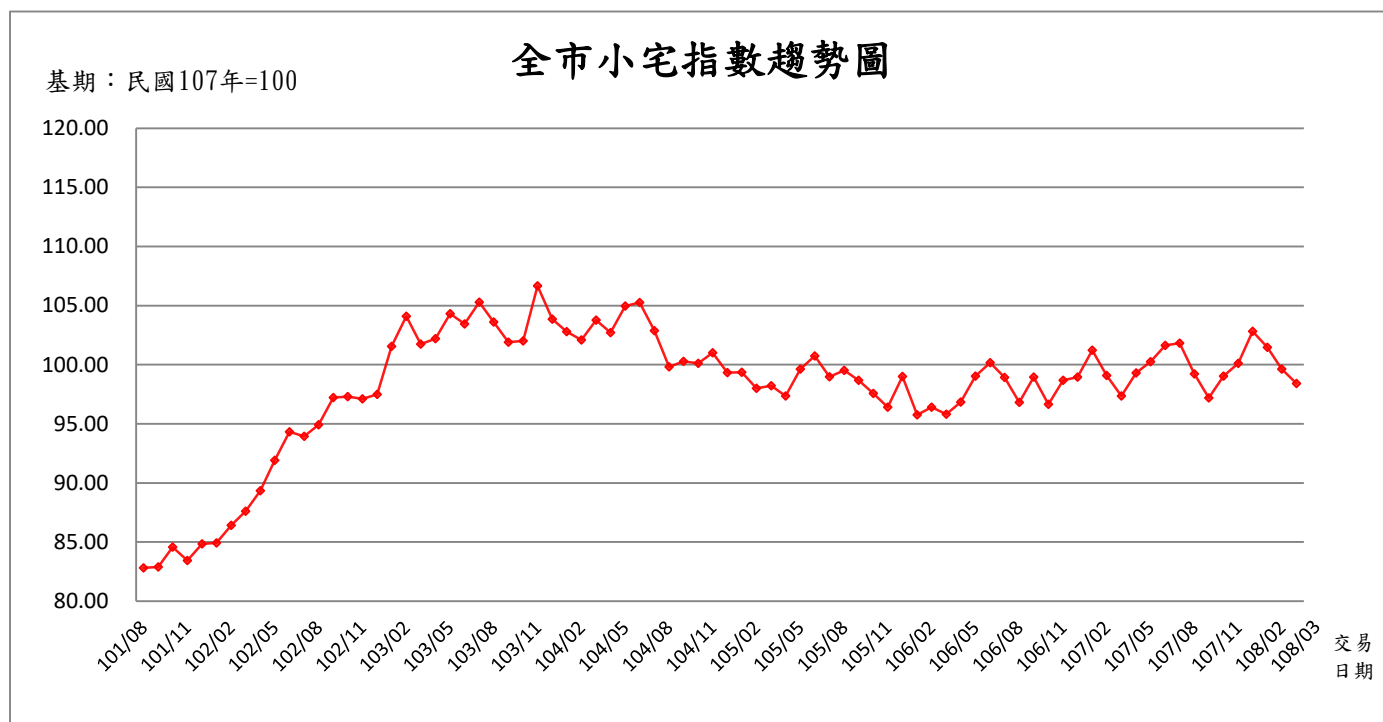


臺北市住宅價格指數-小宅指數

全市小宅價格統計



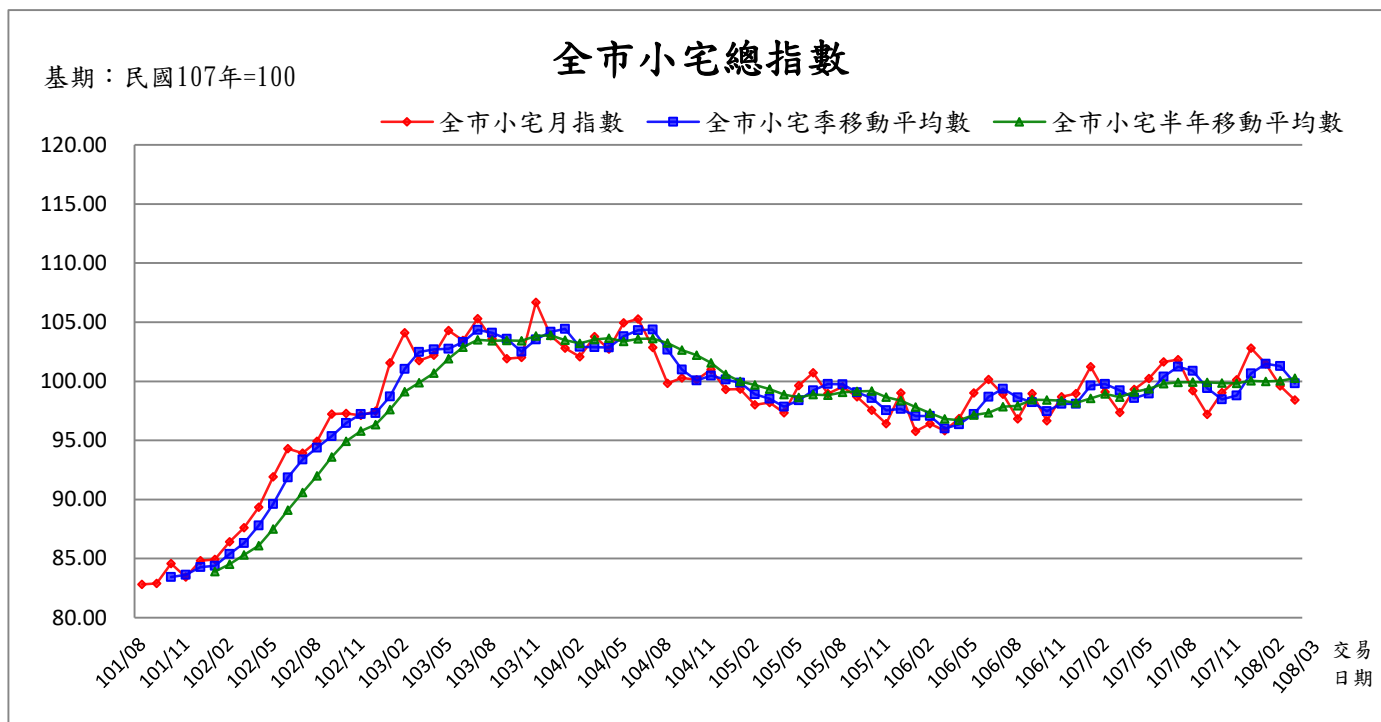
資料來源：臺北市政府地政局

行政區	年月	指數 (107年=100)	變動率 (%)	標準住宅總價 (萬元)	標準住宅單價 (萬元/坪)
全市 小宅	101/08	82.81	-	715	51.11
	101/09	82.90	0.11	716	51.16
	101/10	84.57	2.01	731	52.19
	101/11	83.43	-1.35	721	51.49
	101/12	84.83	1.68	733	52.35
	102/01	84.93	0.12	734	52.42
	102/02	86.42	1.75	747	53.34
	102/03	87.61	1.38	757	54.07
	102/04	89.34	1.97	772	55.13
	102/05	91.91	2.88	794	56.72
	102/06	94.31	2.61	815	58.20
	102/07	93.93	-0.40	812	57.97
	102/08	94.91	1.04	820	58.57
	102/09	97.23	2.44	840	60.01
	102/10	97.29	0.06	841	60.04
	102/11	97.12	-0.17	839	59.94
	102/12	97.48	0.37	842	60.16
	103/01	101.56	4.19	878	62.68
	103/02	104.09	2.49	899	64.24
	103/03	101.75	-2.25	879	62.80
	103/04	102.21	0.45	883	63.08
	103/05	104.30	2.04	901	64.37
	103/06	103.44	-0.82	894	63.84
	103/07	105.30	1.80	910	64.98
	103/08	103.60	-1.61	895	63.94
	103/09	101.90	-1.64	880	62.89
103/10	102.01	0.11	881	62.96	
103/11	106.68	4.58	922	65.84	
103/12	103.85	-2.65	897	64.09	
104/01	102.79	-1.02	888	63.44	
104/02	102.08	-0.69	882	63.00	

全市
小宅

104/03	103.77	1.66	897	64.04
104/04	102.72	-1.01	888	63.40
104/05	104.95	2.17	907	64.77
104/06	105.27	0.30	910	64.97
104/07	102.87	-2.28	889	63.49
104/08	99.83	-2.96	863	61.61
104/09	100.28	0.45	866	61.89
104/10	100.12	-0.16	865	61.79
104/11	101.00	0.88	873	62.33
104/12	99.32	-1.66	858	61.29
105/01	99.35	0.03	858	61.31
105/02	98.00	-1.36	847	60.48
105/03	98.21	0.21	849	60.61
105/04	97.34	-0.89	841	60.08
105/05	99.63	2.35	861	61.49
105/06	100.73	1.10	870	62.17
105/07	98.97	-1.75	855	61.08
105/08	99.52	0.56	860	61.42
105/09	98.69	-0.83	853	60.91
105/10	97.56	-1.14	843	60.21
105/11	96.41	-1.18	833	59.50
105/12	99.00	2.69	855	61.10
106/01	95.76	-3.27	827	59.10
106/02	96.40	0.67	833	59.49
106/03	95.82	-0.60	828	59.14
106/04	96.85	1.07	837	59.77
106/05	99.02	2.24	856	61.11
106/06	100.16	1.15	865	61.81
106/07	98.91	-1.25	855	61.04
106/08	96.82	-2.11	837	59.75
106/09	98.95	2.20	855	61.07
106/10	96.66	-2.31	835	59.66
106/11	98.69	2.10	853	60.91
106/12	98.96	0.27	855	61.07
107/01	101.23	2.29	875	62.48
107/02	99.08	-2.12	856	61.14
107/03	97.35	-1.75	841	60.08
107/04	99.31	2.01	858	61.29
107/05	100.24	0.94	866	61.86
107/06	101.63	1.39	878	62.72
107/07	101.82	0.19	880	62.84
107/08	99.21	-2.56	857	61.23
107/09	97.20	-2.03	840	59.99
107/10	99.04	1.89	856	61.12
107/11	100.12	1.09	865	61.79
107/12	102.81	2.69	888	63.45
108/01	101.47	-1.30	877	62.62
108/02	99.62	-1.82	861	61.48
108/03	98.41	-1.21	850	60.73

月指數、季移動平均數、半年移動平均數



資料來源：臺北市政府地政局

行政區	年月	月指數 (107年=100)	季移動 平均數	變動率 (%)	半年移動 平均數	變動率 (%)
全市 小宅	101/08	82.81	-	-	-	-
	101/09	82.90	-	-	-	-
	101/10	84.57	83.43	-	-	-
	101/11	83.43	83.63	0.25	-	-
	101/12	84.83	84.28	0.77	-	-
	102/01	84.93	84.40	0.14	83.91	-
	102/02	86.42	85.39	1.18	84.51	0.72
	102/03	87.61	86.32	1.09	85.30	0.93
	102/04	89.34	87.79	1.70	86.09	0.93
	102/05	91.91	89.62	2.08	87.51	1.64
	102/06	94.31	91.85	2.49	89.09	1.81
	102/07	93.93	93.38	1.67	90.59	1.68
	102/08	94.91	94.38	1.07	92.00	1.56
	102/09	97.23	95.36	1.03	93.61	1.74
	102/10	97.29	96.48	1.17	94.93	1.42
	102/11	97.12	97.21	0.76	95.80	0.91
	102/12	97.48	97.30	0.09	96.33	0.55
	103/01	101.56	98.72	1.46	97.60	1.32
	103/02	104.09	101.04	2.35	99.13	1.57
	103/03	101.75	102.47	1.41	99.88	0.76
	103/04	102.21	102.68	0.21	100.70	0.82
	103/05	104.30	102.75	0.07	101.90	1.19
	103/06	103.44	103.32	0.55	102.89	0.97
	103/07	105.30	104.35	1.00	103.52	0.61
	103/08	103.60	104.11	-0.22	103.43	-0.08
	103/09	101.90	103.60	-0.49	103.46	0.02
	103/10	102.01	102.50	-1.06	103.43	-0.03
	103/11	106.68	103.53	1.00	103.82	0.38
103/12	103.85	104.18	0.63	103.89	0.07	
104/01	102.79	104.44	0.25	103.47	-0.40	
104/02	102.08	102.91	-1.47	103.22	-0.24	
104/03	103.77	102.88	-0.03	103.53	0.30	
104/04	102.72	102.86	-0.02	103.65	0.11	
104/05	104.95	103.81	0.93	103.36	-0.28	

全市
小宅

104/06	105.27	104.31	0.48	103.60	0.23
104/07	102.87	104.36	0.05	103.61	0.01
104/08	99.83	102.66	-1.64	103.24	-0.36
104/09	100.28	100.99	-1.62	102.65	-0.56
104/10	100.12	100.08	-0.91	102.22	-0.42
104/11	101.00	100.47	0.39	101.56	-0.64
104/12	99.32	100.15	-0.32	100.57	-0.98
105/01	99.35	99.89	-0.26	99.98	-0.58
105/02	98.00	98.89	-1.00	99.68	-0.31
105/03	98.21	98.52	-0.37	99.33	-0.35
105/04	97.34	97.85	-0.68	98.87	-0.47
105/05	99.63	98.39	0.56	98.64	-0.23
105/06	100.73	99.23	0.85	98.88	0.24
105/07	98.97	99.78	0.55	98.81	-0.06
105/08	99.52	99.74	-0.04	99.07	0.26
105/09	98.69	99.06	-0.68	99.15	0.08
105/10	97.56	98.59	-0.47	99.18	0.04
105/11	96.41	97.55	-1.05	98.65	-0.54
105/12	99.00	97.66	0.11	98.36	-0.29
106/01	95.76	97.06	-0.61	97.82	-0.54
106/02	96.40	97.05	0.00	97.30	-0.53
106/03	95.82	95.99	-1.09	96.83	-0.49
106/04	96.85	96.36	0.38	96.71	-0.12
106/05	99.02	97.23	0.91	97.14	0.45
106/06	100.16	98.68	1.49	97.34	0.20
106/07	98.91	99.36	0.70	97.86	0.54
106/08	96.82	98.63	-0.74	97.93	0.07
106/09	98.95	98.23	-0.41	98.45	0.53
106/10	96.66	97.48	-0.76	98.42	-0.03
106/11	98.69	98.10	0.64	98.37	-0.06
106/12	98.96	98.10	0.00	98.17	-0.20
107/01	101.23	99.63	1.55	98.55	0.39
107/02	99.08	99.76	0.13	98.93	0.38
107/03	97.35	99.22	-0.54	98.66	-0.27
107/04	99.31	98.58	-0.65	99.10	0.45
107/05	100.24	98.97	0.39	99.36	0.26
107/06	101.63	100.39	1.44	99.81	0.45
107/07	101.82	101.23	0.83	99.91	0.10
107/08	99.21	100.89	-0.34	99.93	0.02
107/09	97.20	99.41	-1.46	99.90	-0.03
107/10	99.04	98.48	-0.93	99.86	-0.05
107/11	100.12	98.79	0.31	99.84	-0.02
107/12	102.81	100.66	1.89	100.03	0.20
108/01	101.47	101.47	0.80	99.98	-0.06
108/02	99.62	101.30	-0.16	100.04	0.07
108/03	98.41	99.83	-1.45	100.25	0.20