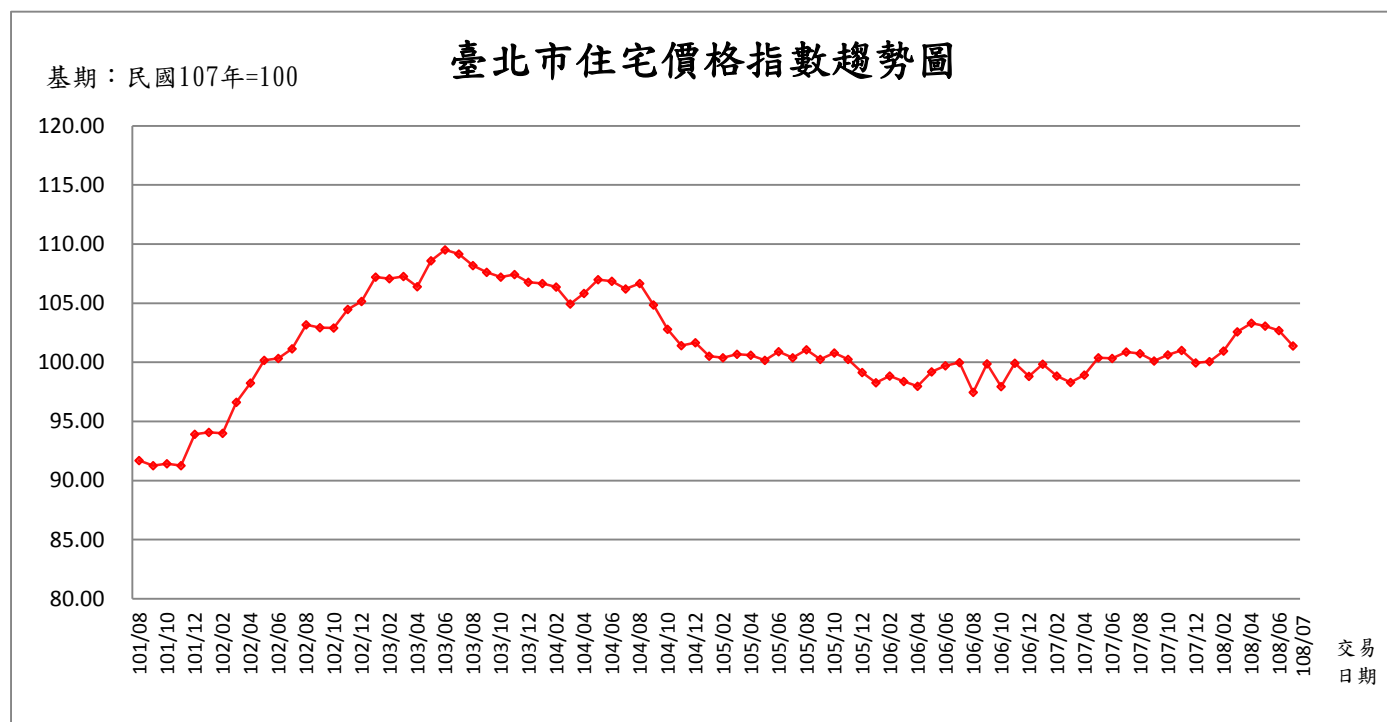


# 108年7月臺北市住宅價格指數

## 一、全市住宅價格統計



資料來源：臺北市政府地政局

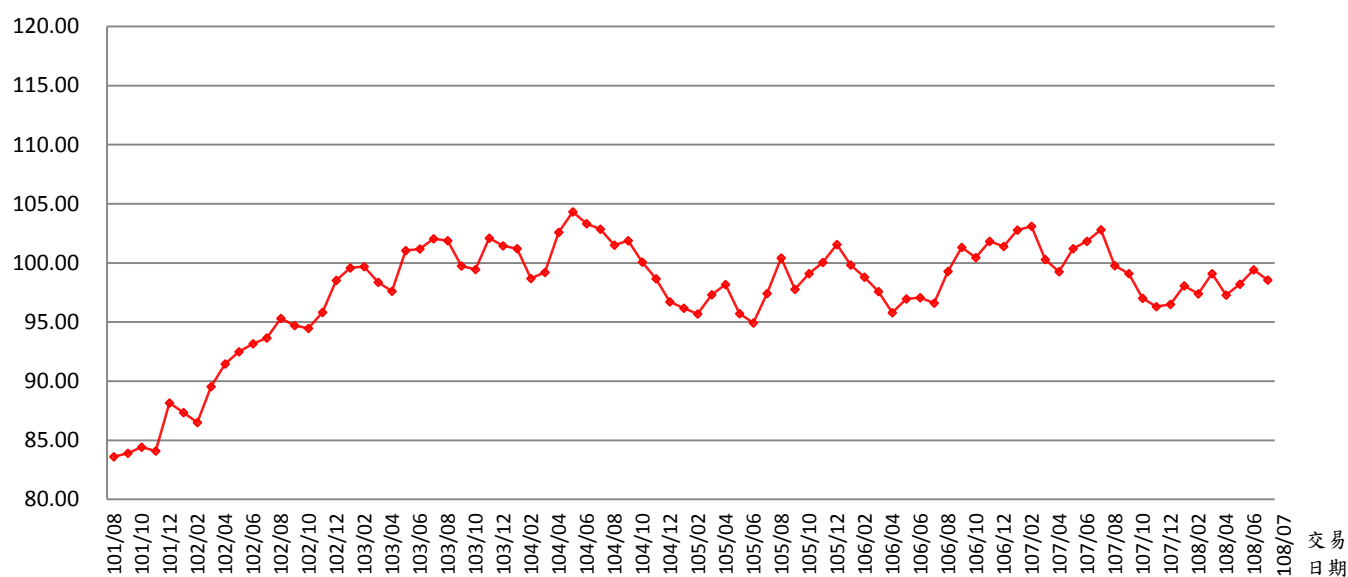
行政區	年月	指數 (107年=100)	變動率 (%)	標準住宅總價 (萬元)	標準住宅單價 (萬元/坪)
全市	101/08	91.69	-	1,452	46.26
	101/09	91.27	-0.45	1,446	46.05
	101/10	91.43	0.17	1,448	46.13
	101/11	91.27	-0.17	1,446	46.04
	101/12	93.91	2.90	1,488	47.38
	102/01	94.08	0.18	1,490	47.46
	102/02	94.01	-0.07	1,489	47.43
	102/03	96.64	2.80	1,531	48.75
	102/04	98.25	1.67	1,556	49.57
	102/05	100.17	1.96	1,587	50.54
	102/06	100.33	0.16	1,589	50.62
	102/07	101.14	0.80	1,602	51.02
	102/08	103.19	2.03	1,635	52.06
	102/09	102.92	-0.26	1,630	51.93
	102/10	102.91	-0.01	1,630	51.92
	102/11	104.48	1.53	1,655	52.71
	102/12	105.16	0.65	1,666	53.05
	103/01	107.21	1.95	1,698	54.09
	103/02	107.07	-0.13	1,696	54.02
	103/03	107.26	0.18	1,699	54.11
	103/04	106.40	-0.80	1,686	53.68
	103/05	108.60	2.07	1,720	54.79
	103/06	109.51	0.84	1,735	55.25
	103/07	109.16	-0.32	1,729	55.07
	103/08	108.19	-0.89	1,714	54.58
	103/09	107.62	-0.53	1,705	54.29
	103/10	107.20	-0.38	1,698	54.08
	103/11	107.43	0.21	1,702	54.20
	103/12	106.79	-0.60	1,692	53.88
	104/01	106.66	-0.12	1,690	53.81
	104/02	106.36	-0.28	1,685	53.66
	104/03	104.94	-1.33	1,662	52.95
104/04	105.82	0.84	1,676	53.39	

全市

104/05	106.98	1.10	1,695	53.97
104/06	106.85	-0.12	1,693	53.91
104/07	106.20	-0.61	1,682	53.58
104/08	106.67	0.44	1,690	53.81
104/09	104.85	-1.70	1,661	52.90
104/10	102.80	-1.96	1,629	51.86
104/11	101.41	-1.35	1,607	51.16
104/12	101.67	0.25	1,611	51.29
105/01	100.54	-1.11	1,593	50.72
105/02	100.40	-0.14	1,590	50.65
105/03	100.69	0.29	1,595	50.80
105/04	100.60	-0.09	1,594	50.75
105/05	100.17	-0.43	1,587	50.54
105/06	100.91	0.74	1,599	50.91
105/07	100.39	-0.51	1,590	50.65
105/08	101.06	0.66	1,601	50.98
105/09	100.26	-0.78	1,588	50.58
105/10	100.80	0.53	1,597	50.85
105/11	100.25	-0.55	1,588	50.58
105/12	99.14	-1.11	1,570	50.02
106/01	98.27	-0.88	1,557	49.58
106/02	98.84	0.58	1,566	49.87
106/03	98.39	-0.46	1,559	49.64
106/04	97.97	-0.42	1,552	49.43
106/05	99.20	1.25	1,571	50.05
106/06	99.71	0.52	1,580	50.31
106/07	99.99	0.28	1,584	50.45
106/08	97.46	-2.54	1,544	49.17
106/09	99.87	2.47	1,582	50.38
106/10	97.94	-1.92	1,552	49.41
106/11	99.94	2.03	1,583	50.42
106/12	98.82	-1.12	1,565	49.86
107/01	99.83	1.03	1,582	50.37
107/02	98.86	-0.98	1,566	49.87
107/03	98.31	-0.55	1,557	49.60
107/04	98.92	0.62	1,567	49.91
107/05	100.40	1.49	1,590	50.65
107/06	100.33	-0.07	1,589	50.62
107/07	100.88	0.55	1,598	50.90
107/08	100.75	-0.13	1,596	50.83
107/09	100.12	-0.62	1,586	50.51
107/10	100.63	0.50	1,594	50.77
107/11	101.01	0.38	1,600	50.96
107/12	99.96	-1.04	1,584	50.43
108/01	100.07	0.11	1,585	50.49
108/02	100.97	0.90	1,600	50.94
108/03	102.59	1.60	1,625	51.76
108/04	103.30	0.69	1,636	52.12
108/05	103.06	-0.23	1,633	52.00
108/06	102.70	-0.35	1,627	51.82
108/07	101.39	-1.28	1,606	51.15

### 全市大樓住宅價格指數趨勢圖

基期：民國107年=100



資料來源：臺北市政府地政局

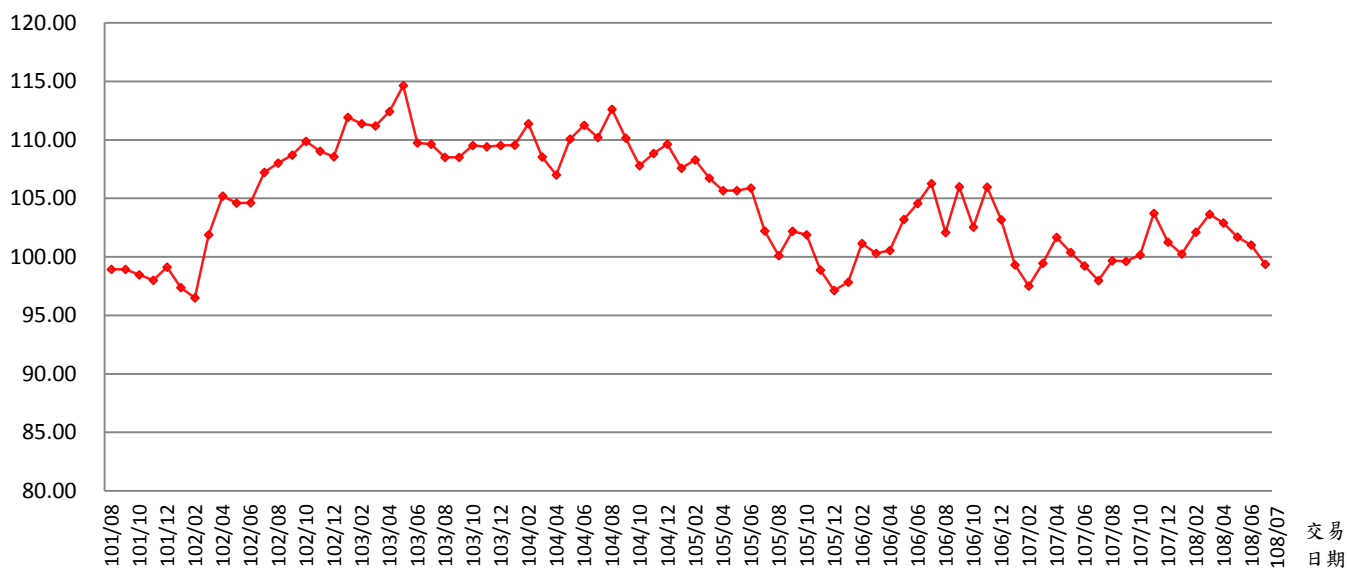
行政區	年月	指數 (107年=100)	變動率 (%)	標準住宅總價 (萬元)	標準住宅單價 (萬元/坪)
全市大樓	101/08	83.61	-	1,747	48.95
	101/09	83.92	0.38	1,754	49.13
	101/10	84.44	0.62	1,765	49.43
	101/11	84.10	-0.40	1,758	49.23
	101/12	88.15	4.82	1,842	51.61
	102/01	87.34	-0.92	1,825	51.13
	102/02	86.52	-0.94	1,808	50.65
	102/03	89.55	3.50	1,871	52.42
	102/04	91.46	2.14	1,911	53.54
	102/05	92.51	1.14	1,933	54.16
	102/06	93.17	0.72	1,947	54.54
	102/07	93.67	0.53	1,958	54.83
	102/08	95.31	1.75	1,992	55.79
	102/09	94.72	-0.62	1,980	55.45
	102/10	94.48	-0.26	1,975	55.31
	102/11	95.81	1.41	2,002	56.09
	102/12	98.53	2.84	2,059	57.68
	103/01	99.58	1.06	2,081	58.29
	103/02	99.69	0.11	2,083	58.36
	103/03	98.38	-1.32	2,056	57.59
	103/04	97.61	-0.78	2,040	57.14
	103/05	101.05	3.52	2,112	59.16
	103/06	101.20	0.15	2,115	59.24
	103/07	102.06	0.85	2,133	59.75
	103/08	101.90	-0.15	2,130	59.66
	103/09	99.75	-2.11	2,085	58.40
	103/10	99.45	-0.31	2,078	58.22
	103/11	102.11	2.67	2,134	59.78
	103/12	101.45	-0.64	2,120	59.39
	104/01	101.21	-0.24	2,115	59.25
104/02	98.71	-2.47	2,063	57.79	
104/03	99.21	0.51	2,073	58.08	
104/04	102.59	3.41	2,144	60.06	
104/05	104.34	1.70	2,181	61.08	
104/06	103.31	-0.98	2,159	60.48	

全市  
大樓

104/07	102.87	-0.42	2,150	60.23
104/08	101.50	-1.34	2,121	59.42
104/09	101.88	0.37	2,129	59.64
104/10	100.09	-1.76	2,092	58.59
104/11	98.66	-1.43	2,062	57.76
104/12	96.71	-1.97	2,021	56.62
105/01	96.17	-0.56	2,010	56.30
105/02	95.69	-0.50	2,000	56.02
105/03	97.30	1.68	2,034	56.96
105/04	98.18	0.91	2,052	57.48
105/05	95.72	-2.51	2,001	56.04
105/06	94.93	-0.83	1,984	55.57
105/07	97.43	2.63	2,036	57.04
105/08	100.43	3.08	2,099	58.80
105/09	97.78	-2.64	2,044	57.25
105/10	99.10	1.35	2,071	58.02
105/11	100.05	0.96	2,091	58.57
105/12	101.57	1.52	2,123	59.46
106/01	99.83	-1.72	2,086	58.44
106/02	98.81	-1.01	2,065	57.85
106/03	97.59	-1.24	2,040	57.13
106/04	95.80	-1.84	2,002	56.08
106/05	96.97	1.22	2,027	56.77
106/06	97.06	0.10	2,029	56.82
106/07	96.60	-0.47	2,019	56.55
106/08	99.28	2.77	2,075	58.12
106/09	101.33	2.07	2,118	59.32
106/10	100.45	-0.87	2,099	58.81
106/11	101.83	1.37	2,128	59.61
106/12	101.39	-0.42	2,119	59.36
107/01	102.78	1.36	2,148	60.17
107/02	103.12	0.34	2,155	60.37
107/03	100.29	-2.74	2,096	58.71
107/04	99.26	-1.02	2,075	58.11
107/05	101.21	1.96	2,115	59.25
107/06	101.84	0.62	2,128	59.62
107/07	102.81	0.95	2,149	60.19
107/08	99.78	-2.94	2,085	58.41
107/09	99.09	-0.69	2,071	58.01
107/10	97.00	-2.10	2,027	56.79
107/11	96.32	-0.70	2,013	56.39
107/12	96.51	0.19	2,017	56.50
108/01	98.07	1.62	2,050	57.41
108/02	97.40	-0.68	2,036	57.02
108/03	99.10	1.74	2,071	58.01
108/04	97.29	-1.82	2,033	56.96
108/05	98.20	0.94	2,052	57.49
108/06	99.43	1.25	2,078	58.21
108/07	98.57	-0.86	2,060	57.71

### 全市公寓住宅價格指數趨勢圖

基期：民國107年=100

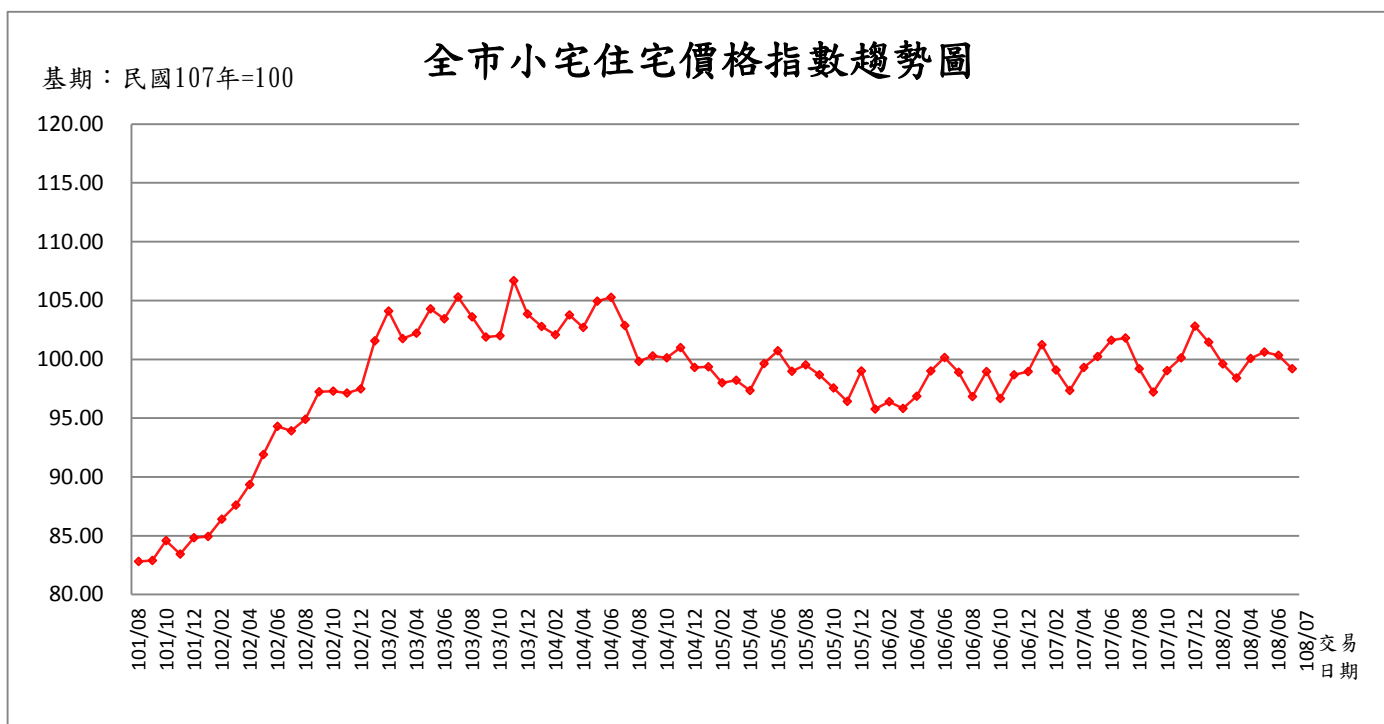


資料來源：臺北市政府地政局

行政區	年月	指數 (107年=100)	變動率 (%)	標準住宅總價 (萬元)	標準住宅單價 (萬元/坪)
全市公寓	101/08	98.93	-	1,281	42.68
	101/09	98.93	0.01	1,281	42.69
	101/10	98.47	-0.47	1,275	42.49
	101/11	98.01	-0.47	1,269	42.29
	101/12	99.13	1.14	1,283	42.77
	102/01	97.39	-1.75	1,261	42.02
	102/02	96.50	-0.91	1,249	41.64
	102/03	101.90	5.59	1,319	43.97
	102/04	105.20	3.24	1,362	45.39
	102/05	104.59	-0.58	1,354	45.13
	102/06	104.64	0.05	1,354	45.15
	102/07	107.24	2.48	1,388	46.27
	102/08	108.02	0.73	1,398	46.61
	102/09	108.70	0.62	1,407	46.90
	102/10	109.88	1.08	1,422	47.41
	102/11	109.05	-0.75	1,412	47.05
	102/12	108.56	-0.44	1,405	46.84
	103/01	111.93	3.10	1,449	48.29
	103/02	111.39	-0.47	1,442	48.06
	103/03	111.19	-0.19	1,439	47.97
	103/04	112.43	1.11	1,455	48.51
	103/05	114.64	1.97	1,484	49.46
	103/06	109.76	-4.26	1,421	47.36
	103/07	109.65	-0.10	1,419	47.31
	103/08	108.51	-1.03	1,405	46.82
	103/09	108.52	0.00	1,405	46.82
	103/10	109.53	0.94	1,418	47.26
	103/11	109.42	-0.10	1,416	47.21
	103/12	109.54	0.11	1,418	47.26
	104/01	109.55	0.01	1,418	47.27
	104/02	111.39	1.68	1,442	48.06
	104/03	108.54	-2.55	1,405	46.83
	104/04	107.01	-1.41	1,385	46.17
104/05	110.07	2.85	1,425	47.49	
104/06	111.24	1.07	1,440	48.00	

全市  
公寓

104/07	110.22	-0.91	1,427	47.56
104/08	112.63	2.18	1,458	48.60
104/09	110.14	-2.21	1,426	47.52
104/10	107.79	-2.13	1,395	46.51
104/11	108.83	0.96	1,409	46.96
104/12	109.65	0.75	1,419	47.31
105/01	107.58	-1.89	1,393	46.42
105/02	108.30	0.68	1,402	46.73
105/03	106.74	-1.45	1,382	46.05
105/04	105.66	-1.01	1,368	45.59
105/05	105.68	0.02	1,368	45.60
105/06	105.88	0.19	1,371	45.69
105/07	102.22	-3.46	1,323	44.11
105/08	100.13	-2.05	1,296	43.20
105/09	102.18	2.05	1,323	44.09
105/10	101.90	-0.27	1,319	43.97
105/11	98.89	-2.96	1,280	42.67
105/12	97.13	-1.77	1,257	41.91
106/01	97.84	0.73	1,266	42.21
106/02	101.17	3.41	1,310	43.65
106/03	100.31	-0.85	1,298	43.28
106/04	100.57	0.25	1,302	43.39
106/05	103.21	2.63	1,336	44.53
106/06	104.57	1.31	1,354	45.12
106/07	106.28	1.63	1,376	45.86
106/08	102.09	-3.94	1,321	44.05
106/09	105.99	3.82	1,372	45.73
106/10	102.56	-3.23	1,328	44.25
106/11	105.97	3.32	1,372	45.72
106/12	103.18	-2.63	1,336	44.52
107/01	99.32	-3.75	1,286	42.85
107/02	97.50	-1.83	1,262	42.07
107/03	99.46	2.01	1,287	42.92
107/04	101.66	2.21	1,316	43.86
107/05	100.38	-1.26	1,299	43.31
107/06	99.23	-1.14	1,284	42.82
107/07	97.97	-1.27	1,268	42.27
107/08	99.69	1.75	1,290	43.01
107/09	99.63	-0.06	1,290	42.99
107/10	100.17	0.54	1,297	43.22
107/11	103.73	3.56	1,343	44.76
107/12	101.25	-2.39	1,311	43.69
108/01	100.24	-1.00	1,298	43.25
108/02	102.10	1.86	1,322	44.05
108/03	103.64	1.50	1,341	44.72
108/04	102.91	-0.70	1,332	44.40
108/05	101.70	-1.18	1,316	43.88
108/06	101.01	-0.68	1,307	43.58
108/07	99.38	-1.61	1,286	42.88



資料來源：臺北市政府地政局

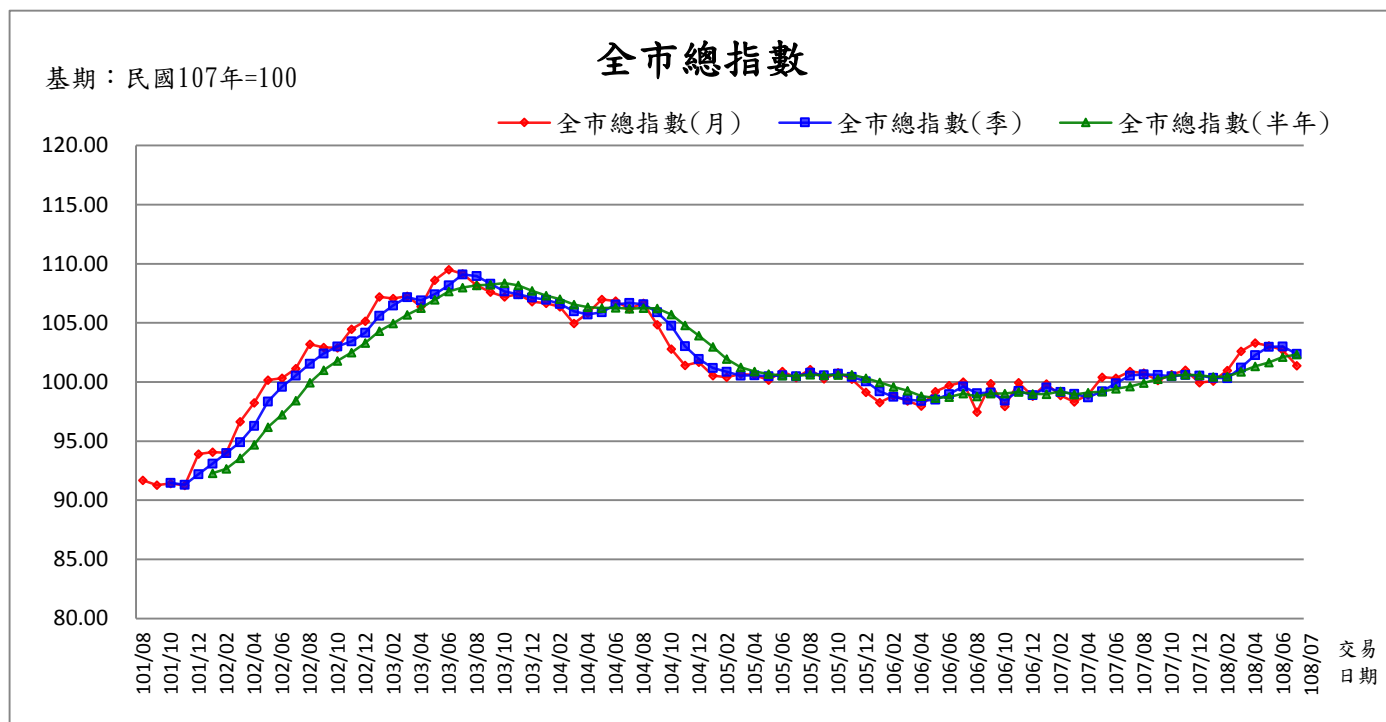
行政區	年月	指數 (107年=100)	變動率 (%)	標準住宅總價 (萬元)	標準住宅單價 (萬元/坪)
全市 小宅	101/08	82.81	-	715	51.11
	101/09	82.90	0.11	716	51.16
	101/10	84.57	2.01	731	52.19
	101/11	83.43	-1.35	721	51.49
	101/12	84.83	1.68	733	52.35
	102/01	84.93	0.12	734	52.42
	102/02	86.42	1.75	747	53.34
	102/03	87.61	1.38	757	54.07
	102/04	89.34	1.97	772	55.13
	102/05	91.91	2.88	794	56.72
	102/06	94.31	2.61	815	58.20
	102/07	93.93	-0.40	812	57.97
	102/08	94.91	1.04	820	58.57
	102/09	97.23	2.44	840	60.01
	102/10	97.29	0.06	841	60.04
	102/11	97.12	-0.17	839	59.94
	102/12	97.48	0.37	842	60.16
	103/01	101.56	4.19	878	62.68
	103/02	104.09	2.49	899	64.24
	103/03	101.75	-2.25	879	62.80
	103/04	102.21	0.45	883	63.08
	103/05	104.30	2.04	901	64.37
	103/06	103.44	-0.82	894	63.84
	103/07	105.30	1.80	910	64.98
	103/08	103.60	-1.61	895	63.94
	103/09	101.90	-1.64	880	62.89
	103/10	102.01	0.11	881	62.96
	103/11	106.68	4.58	922	65.84
	103/12	103.85	-2.65	897	64.09
	104/01	102.79	-1.02	888	63.44
104/02	102.08	-0.69	882	63.00	
104/03	103.77	1.66	897	64.04	

全市  
小宅

104/04	102.72	-1.01	888	63.40
104/05	104.95	2.17	907	64.77
104/06	105.27	0.30	910	64.97
104/07	102.87	-2.28	889	63.49
104/08	99.83	-2.96	863	61.61
104/09	100.28	0.45	866	61.89
104/10	100.12	-0.16	865	61.79
104/11	101.00	0.88	873	62.33
104/12	99.32	-1.66	858	61.29
105/01	99.35	0.03	858	61.31
105/02	98.00	-1.36	847	60.48
105/03	98.21	0.21	849	60.61
105/04	97.34	-0.89	841	60.08
105/05	99.63	2.35	861	61.49
105/06	100.73	1.10	870	62.17
105/07	98.97	-1.75	855	61.08
105/08	99.52	0.56	860	61.42
105/09	98.69	-0.83	853	60.91
105/10	97.56	-1.14	843	60.21
105/11	96.41	-1.18	833	59.50
105/12	99.00	2.69	855	61.10
106/01	95.76	-3.27	827	59.10
106/02	96.40	0.67	833	59.49
106/03	95.82	-0.60	828	59.14
106/04	96.85	1.07	837	59.77
106/05	99.02	2.24	856	61.11
106/06	100.16	1.15	865	61.81
106/07	98.91	-1.25	855	61.04
106/08	96.82	-2.11	837	59.75
106/09	98.95	2.20	855	61.07
106/10	96.66	-2.31	835	59.66
106/11	98.69	2.10	853	60.91
106/12	98.96	0.27	855	61.07
107/01	101.23	2.29	875	62.48
107/02	99.08	-2.12	856	61.14
107/03	97.35	-1.75	841	60.08
107/04	99.31	2.01	858	61.29
107/05	100.24	0.94	866	61.86
107/06	101.63	1.39	878	62.72
107/07	101.82	0.19	880	62.84
107/08	99.21	-2.56	857	61.23
107/09	97.20	-2.03	840	59.99
107/10	99.04	1.89	856	61.12
107/11	100.12	1.09	865	61.79
107/12	102.81	2.69	888	63.45
108/01	101.47	-1.30	877	62.62
108/02	99.62	-1.82	861	61.48
108/03	98.41	-1.21	850	60.73
108/04	100.07	1.69	865	61.76
108/05	100.62	0.55	869	62.10
108/06	100.33	-0.29	867	61.92
108/07	99.19	-1.14	857	61.21



# 月指數、季移動平均數、半年移動平均數



資料來源：臺北市政府地政局

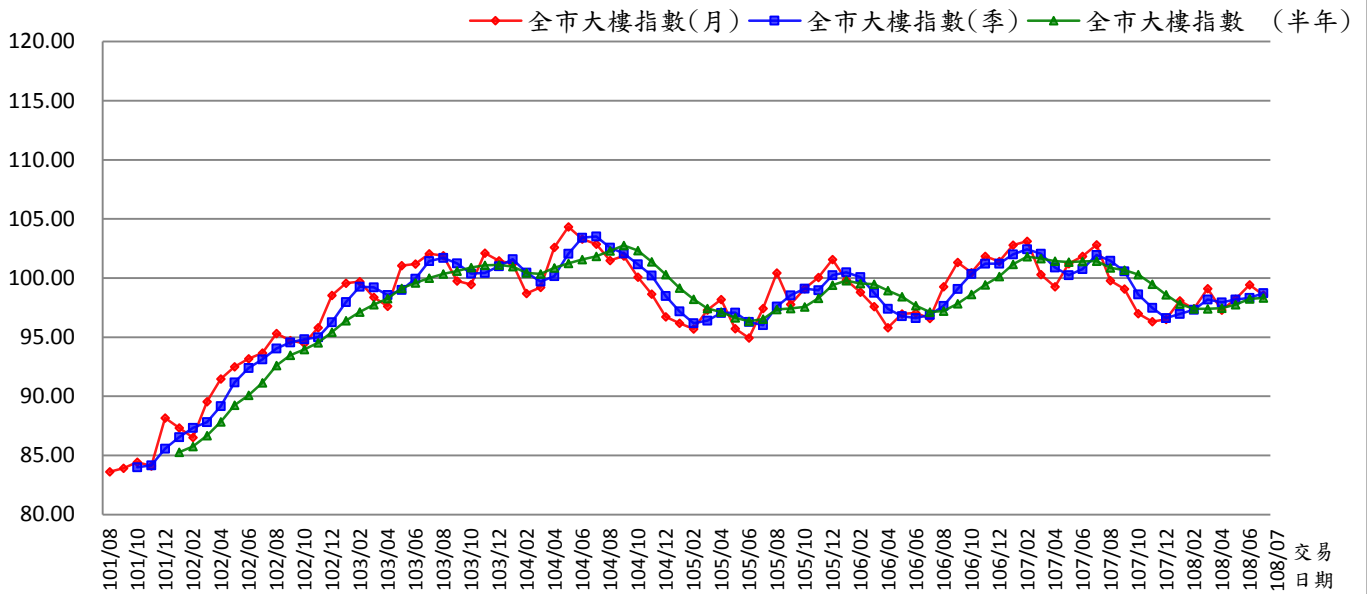
行政區	年月	月指數 (107年=100)	季移動 平均數	變動率 (%)	半年移動 平均數	變動率 (%)
全市	101/08	91.69	-	-	-	-
	101/09	91.27	-	-	-	-
	101/10	91.43	91.46	-	-	-
	101/11	91.27	91.32	-0.15	-	-
	101/12	93.91	92.20	0.96	-	-
	102/01	94.08	93.08	0.96	92.27	-
	102/02	94.01	94.00	0.98	92.66	0.42
	102/03	96.64	94.91	0.97	93.55	0.96
	102/04	98.25	96.30	1.47	94.69	1.22
	102/05	100.17	98.35	2.13	96.17	1.57
	102/06	100.33	99.59	1.25	97.25	1.11
	102/07	101.14	100.55	0.97	98.42	1.21
	102/08	103.19	101.55	1.00	99.95	1.56
	102/09	102.92	102.42	0.85	101.00	1.05
	102/10	102.91	103.01	0.58	101.78	0.77
	102/11	104.48	103.44	0.42	102.49	0.70
	102/12	105.16	104.18	0.72	103.30	0.78
	103/01	107.21	105.61	1.38	104.31	0.98
	103/02	107.07	106.48	0.82	104.96	0.62
	103/03	107.26	107.18	0.66	105.68	0.69
	103/04	106.40	106.91	-0.25	106.26	0.55
	103/05	108.60	107.42	0.48	106.95	0.65
	103/06	109.51	108.17	0.70	107.67	0.68
	103/07	109.16	109.09	0.85	108.00	0.30
	103/08	108.19	108.95	-0.13	108.19	0.17
	103/09	107.62	108.32	-0.58	108.25	0.05
	103/10	107.20	107.67	-0.60	108.38	0.12
103/11	107.43	107.42	-0.23	108.18	-0.18	
103/12	106.79	107.14	-0.26	107.73	-0.42	
104/01	106.66	106.96	-0.17	107.31	-0.39	
104/02	106.36	106.60	-0.33	107.01	-0.28	
104/03	104.94	105.99	-0.58	106.57	-0.42	

全市

104/04	105.82	105.71	-0.26	106.34	-0.22
104/05	106.98	105.92	0.20	106.26	-0.07
104/06	106.85	106.55	0.60	106.27	0.01
104/07	106.20	106.68	0.12	106.19	-0.07
104/08	106.67	106.57	-0.10	106.25	0.05
104/09	104.85	105.91	-0.63	106.23	-0.01
104/10	102.80	104.77	-1.07	105.73	-0.47
104/11	101.41	103.02	-1.67	104.80	-0.88
104/12	101.67	101.96	-1.03	103.93	-0.82
105/01	100.54	101.20	-0.74	102.99	-0.91
105/02	100.40	100.87	-0.33	101.94	-1.01
105/03	100.69	100.54	-0.32	101.25	-0.68
105/04	100.60	100.56	0.02	100.88	-0.36
105/05	100.17	100.49	-0.08	100.68	-0.21
105/06	100.91	100.56	0.07	100.55	-0.13
105/07	100.39	100.49	-0.07	100.53	-0.02
105/08	101.06	100.79	0.30	100.64	0.11
105/09	100.26	100.57	-0.21	100.57	-0.07
105/10	100.80	100.71	0.13	100.60	0.03
105/11	100.25	100.44	-0.27	100.61	0.01
105/12	99.14	100.06	-0.37	100.32	-0.29
106/01	98.27	99.22	-0.84	99.96	-0.35
106/02	98.84	98.75	-0.47	99.59	-0.37
106/03	98.39	98.50	-0.25	99.28	-0.31
106/04	97.97	98.40	-0.10	98.81	-0.47
106/05	99.20	98.52	0.12	98.64	-0.18
106/06	99.71	98.96	0.45	98.73	0.10
106/07	99.99	99.64	0.68	99.02	0.29
106/08	97.46	99.05	-0.58	98.79	-0.23
106/09	99.87	99.11	0.05	99.03	0.25
106/10	97.94	98.42	-0.69	99.03	-0.01
106/11	99.94	99.25	0.84	99.15	0.12
106/12	98.82	98.90	-0.35	99.00	-0.15
107/01	99.83	99.53	0.64	98.98	-0.03
107/02	98.86	99.17	-0.36	99.21	0.24
107/03	98.31	99.00	-0.17	98.95	-0.26
107/04	98.92	98.70	-0.31	99.11	0.17
107/05	100.40	99.21	0.52	99.19	0.08
107/06	100.33	99.88	0.68	99.44	0.25
107/07	100.88	100.54	0.65	99.62	0.18
107/08	100.75	100.65	0.12	99.93	0.32
107/09	100.12	100.58	-0.07	100.23	0.30
107/10	100.63	100.50	-0.08	100.52	0.28
107/11	101.01	100.59	0.09	100.62	0.10
107/12	99.96	100.53	-0.05	100.56	-0.06
108/01	100.07	100.35	-0.18	100.42	-0.13
108/02	100.97	100.33	-0.01	100.46	0.04
108/03	102.59	101.21	0.87	100.87	0.41
108/04	103.30	102.29	1.06	101.32	0.44
108/05	103.06	102.98	0.68	101.66	0.34
108/06	102.70	103.02	0.04	102.12	0.45
108/07	101.39	102.38	-0.62	102.34	0.21

## 全市大樓指數

基期：民國107年=100



資料來源：臺北市政府地政局

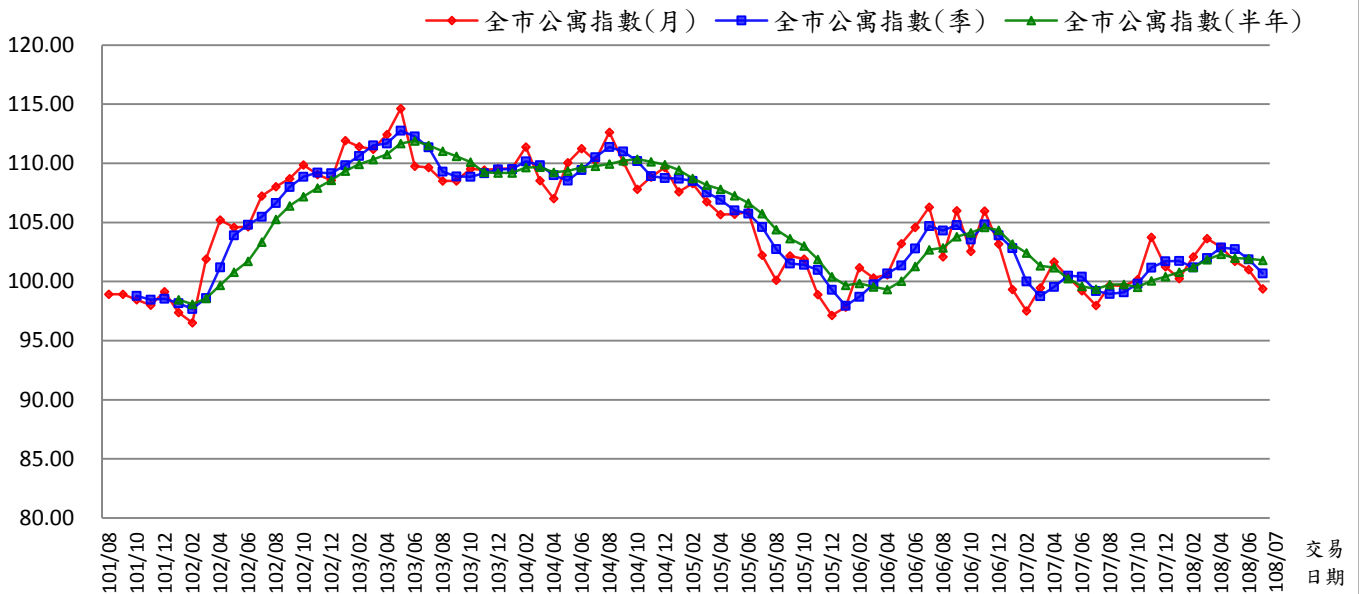
行政區	年月	月指數 (107年=100)	季移動 平均數	變動率 (%)	半年移動 平均數	變動率 (%)
全市大樓	101/08	83.61	-	-	-	-
	101/09	83.92	-	-	-	-
	101/10	84.44	83.99	-	-	-
	101/11	84.10	84.15	0.20	-	-
	101/12	88.15	85.56	1.68	-	-
	102/01	87.34	86.53	1.13	85.26	-
	102/02	86.52	87.34	0.93	85.75	0.57
	102/03	89.55	87.80	0.53	86.68	1.09
	102/04	91.46	89.18	1.56	87.85	1.35
	102/05	92.51	91.17	2.24	89.25	1.59
	102/06	93.17	92.38	1.32	90.09	0.94
	102/07	93.67	93.11	0.80	91.14	1.17
	102/08	95.31	94.05	1.00	92.61	1.61
	102/09	94.72	94.56	0.55	93.47	0.93
	102/10	94.48	94.83	0.29	93.97	0.54
	102/11	95.81	95.00	0.18	94.52	0.59
	102/12	98.53	96.27	1.34	95.42	0.95
	103/01	99.58	97.97	1.77	96.40	1.03
	103/02	99.69	99.26	1.32	97.13	0.76
	103/03	98.38	99.21	-0.05	97.74	0.63
	103/04	97.61	98.56	-0.66	98.26	0.53
	103/05	101.05	99.01	0.46	99.14	0.89
	103/06	101.20	99.95	0.95	99.58	0.45
	103/07	102.06	121.32	21.38	99.99	0.42
	103/08	101.90	101.72	-16.16	100.36	0.37
	103/09	99.75	101.24	-0.47	100.59	0.23
	103/10	99.45	100.37	-0.86	100.90	0.31
	103/11	102.11	100.44	0.07	101.08	0.18
	103/12	101.45	101.00	0.56	101.12	0.04
	104/01	101.21	101.59	0.58	100.98	-0.14
	104/02	98.71	100.45	-1.12	100.44	-0.53
	104/03	99.21	99.71	-0.74	100.35	-0.09
104/04	102.59	100.17	0.46	100.88	0.52	
104/05	104.34	102.05	1.87	101.25	0.37	

全市  
大樓

104/06	103.31	103.41	1.34	101.56	0.31
104/07	102.87	103.51	0.09	101.84	0.27
104/08	101.50	102.56	-0.91	102.30	0.46
104/09	101.88	102.08	-0.47	102.75	0.43
104/10	100.09	101.15	-0.91	102.33	-0.41
104/11	98.66	100.21	-0.94	101.38	-0.92
104/12	96.71	98.49	-1.72	100.28	-1.09
105/01	96.17	97.18	-1.33	99.17	-1.11
105/02	95.69	96.19	-1.02	98.20	-0.98
105/03	97.30	96.39	0.20	97.44	-0.78
105/04	98.18	97.06	0.70	97.12	-0.33
105/05	95.72	97.07	0.01	96.63	-0.50
105/06	94.93	96.28	-0.81	96.33	-0.31
105/07	97.43	96.03	-0.26	96.54	0.22
105/08	100.43	97.60	1.64	97.33	0.82
105/09	97.78	98.55	0.97	97.41	0.08
105/10	99.10	99.11	0.57	97.57	0.16
105/11	100.05	98.98	-0.13	98.29	0.74
105/12	101.57	100.24	1.28	99.40	1.13
106/01	99.83	100.48	0.24	99.80	0.40
106/02	98.81	100.07	-0.41	99.53	-0.27
106/03	97.59	98.75	-1.32	99.49	-0.03
106/04	95.80	97.40	-1.36	98.94	-0.55
106/05	96.97	96.79	-0.63	98.43	-0.52
106/06	97.06	96.61	-0.18	97.68	-0.76
106/07	96.60	96.87	0.28	97.14	-0.55
106/08	99.28	97.64	0.80	97.22	0.08
106/09	101.33	99.07	1.46	97.84	0.64
106/10	100.45	100.35	1.30	98.61	0.79
106/11	101.83	101.20	0.85	99.42	0.82
106/12	101.39	101.23	0.02	100.15	0.73
107/01	102.78	102.00	0.76	101.18	1.03
107/02	103.12	102.43	0.42	101.82	0.63
107/03	100.29	102.06	-0.36	101.64	-0.17
107/04	99.26	100.89	-1.15	101.45	-0.20
107/05	101.21	100.25	-0.63	101.34	-0.10
107/06	101.84	100.77	0.51	101.42	0.07
107/07	102.81	101.95	1.17	101.42	0.00
107/08	99.78	101.47	-0.47	100.86	-0.55
107/09	99.09	100.56	-0.90	100.66	-0.20
107/10	97.00	98.62	-1.92	100.29	-0.37
107/11	96.32	97.47	-1.17	99.47	-0.81
107/12	96.51	96.61	-0.88	98.58	-0.89
108/01	98.07	96.97	0.37	97.79	-0.80
108/02	97.40	97.33	0.37	97.40	-0.41
108/03	99.10	98.19	0.89	97.40	0.00
108/04	97.29	97.93	-0.26	97.45	0.05
108/05	98.20	98.20	0.27	97.76	0.32
108/06	99.43	98.31	0.11	98.25	0.50
108/07	98.57	98.73	0.43	98.33	0.08

## 全市公寓指數

基期：民國107年=100

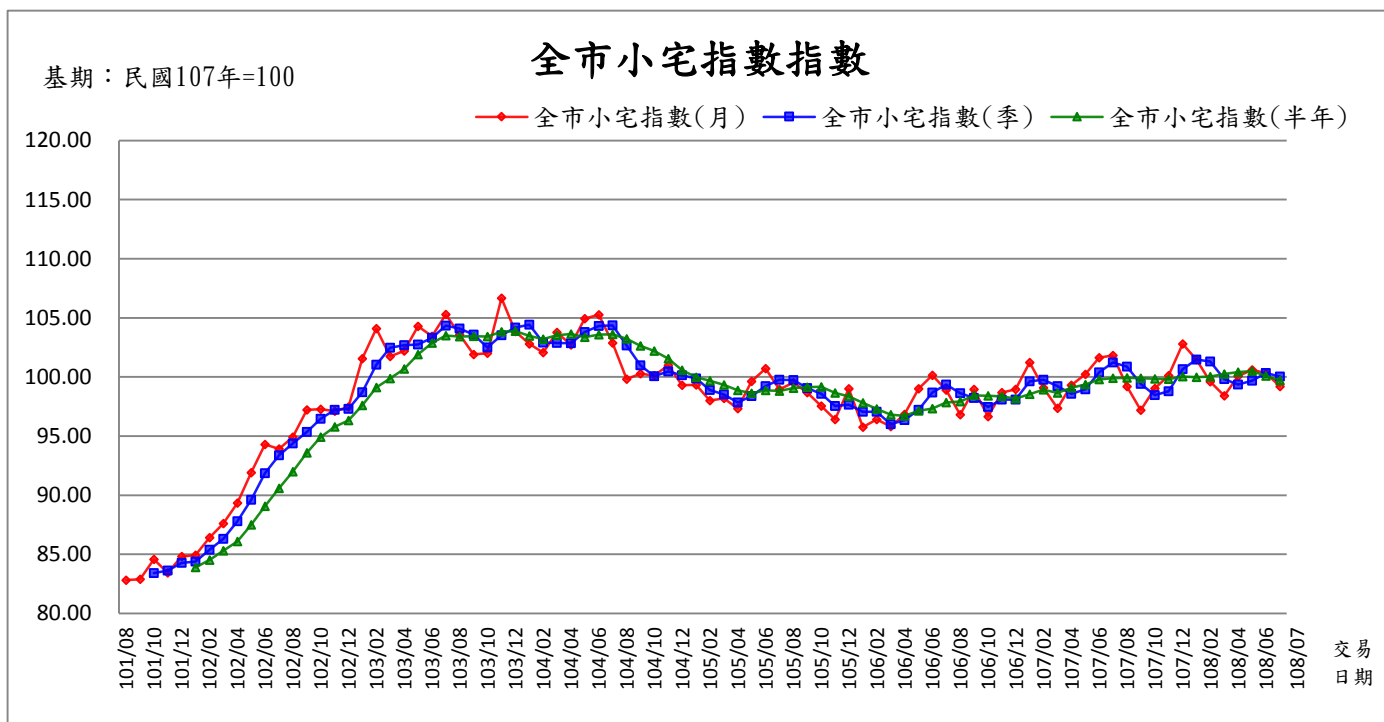


資料來源：臺北市政府地政局

行政區	年月	月指數 (107年=100)	季移動 平均數	變動率 (%)	半年移動 平均數	變動率 (%)
全市公寓	101/08	98.93	-	-	-	-
	101/09	98.93	-	-	-	-
	101/10	98.47	98.78	-	-	-
	101/11	98.01	98.47	-0.31	-	-
	101/12	99.13	98.54	0.07	-	-
	102/01	97.39	98.18	-0.37	98.48	-
	102/02	96.50	97.67	-0.51	98.07	-0.41
	102/03	101.90	98.60	0.95	98.57	0.50
	102/04	105.20	101.20	2.64	99.69	1.14
	102/05	104.59	103.90	2.66	100.79	1.10
	102/06	104.64	104.81	0.88	101.70	0.91
	102/07	107.24	105.49	0.65	103.34	1.61
	102/08	108.02	106.63	1.08	105.26	1.86
	102/09	108.70	107.99	1.27	106.40	1.08
	102/10	109.88	108.87	0.81	107.18	0.73
	102/11	109.05	109.21	0.31	107.92	0.69
	102/12	108.56	109.16	-0.04	108.57	0.61
	103/01	111.93	109.85	0.63	109.36	0.72
	103/02	111.39	110.63	0.71	109.92	0.51
	103/03	111.19	111.50	0.79	110.33	0.38
	103/04	112.43	111.67	0.15	110.76	0.39
	103/05	114.64	112.75	0.97	111.69	0.84
	103/06	109.76	112.27	-0.42	111.89	0.18
	103/07	109.65	111.35	-0.83	111.51	-0.34
	103/08	108.51	109.31	-1.83	111.03	-0.43
	103/09	108.52	108.89	-0.38	110.58	-0.40
	103/10	109.53	108.85	-0.03	110.10	-0.44
	103/11	109.42	109.16	0.28	109.23	-0.79
	103/12	109.54	109.50	0.31	109.19	-0.03
	104/01	109.55	109.50	0.01	109.18	-0.01
	104/02	111.39	110.16	0.60	109.66	0.44
	104/03	108.54	109.83	-0.30	109.66	0.00
104/04	107.01	108.98	-0.77	109.24	-0.38	
104/05	110.07	108.54	-0.41	109.35	0.10	

全市  
公寓

104/06	111.24	109.44	0.83	109.64	0.26
104/07	110.22	110.51	0.98	109.75	0.10
104/08	112.63	111.37	0.77	109.95	0.19
104/09	110.14	111.00	-0.33	110.22	0.24
104/10	107.79	110.19	-0.73	110.35	0.12
104/11	108.83	108.92	-1.15	110.14	-0.19
104/12	109.65	108.76	-0.15	109.88	-0.24
105/01	107.58	108.69	-0.07	109.44	-0.40
105/02	108.30	108.51	-0.16	108.72	-0.66
105/03	106.74	107.54	-0.89	108.15	-0.52
105/04	105.66	106.90	-0.59	107.79	-0.33
105/05	105.68	106.03	-0.82	107.27	-0.49
105/06	105.88	105.74	-0.27	106.64	-0.58
105/07	102.22	104.60	-1.08	105.75	-0.84
105/08	100.13	102.74	-1.77	104.39	-1.29
105/09	102.18	101.51	-1.20	103.63	-0.73
105/10	101.90	101.40	-0.11	103.00	-0.61
105/11	98.89	100.99	-0.41	101.87	-1.10
105/12	97.13	99.31	-1.67	100.41	-1.43
106/01	97.84	97.95	-1.36	99.68	-0.73
106/02	101.17	98.71	0.78	99.85	0.17
106/03	100.31	99.77	1.07	99.54	-0.31
106/04	100.57	100.68	0.91	99.32	-0.22
106/05	103.21	101.36	0.68	100.04	0.73
106/06	104.57	102.78	1.40	101.28	1.24
106/07	106.28	104.69	1.85	102.68	1.39
106/08	102.09	104.31	-0.36	102.84	0.15
106/09	105.99	104.79	0.45	103.78	0.92
106/10	102.56	103.55	-1.18	104.12	0.32
106/11	105.97	104.84	1.25	104.58	0.44
106/12	103.18	103.90	-0.89	104.34	-0.22
107/01	99.32	102.82	-1.04	103.18	-1.11
107/02	97.50	100.00	-2.74	102.42	-0.74
107/03	99.46	98.76	-1.24	101.33	-1.06
107/04	101.66	99.54	0.79	101.18	-0.15
107/05	100.38	100.50	0.96	100.25	-0.92
107/06	99.23	100.43	-0.08	99.59	-0.66
107/07	97.97	99.20	-1.22	99.37	-0.23
107/08	99.69	98.96	-0.23	99.73	0.37
107/09	99.63	99.09	0.13	99.76	0.03
107/10	100.17	99.83	0.74	99.51	-0.25
107/11	103.73	101.18	1.35	100.07	0.56
107/12	101.25	101.72	0.54	100.41	0.34
108/01	100.24	101.74	0.02	100.78	0.38
108/02	102.10	101.20	-0.53	101.19	0.40
108/03	103.64	101.99	0.78	101.86	0.66
108/04	102.91	102.88	0.87	102.31	0.45
108/05	101.70	102.75	-0.13	101.97	-0.33
108/06	101.01	101.87	-0.85	101.93	-0.04
108/07	99.38	100.70	-1.15	101.79	-0.14



資料來源：臺北市政府地政局

行政區	年月	月指數 (107年=100)	季移動 平均數	變動率 (%)	半年移動 平均數	變動率 (%)
全市 小宅	101/08	82.81	-	-	-	-
	101/09	82.90	-	-	-	-
	101/10	84.57	83.43	-	-	-
	101/11	83.43	83.63	0.25	-	-
	101/12	84.83	84.28	0.77	-	-
	102/01	84.93	84.40	0.14	83.91	-
	102/02	86.42	85.39	1.18	84.51	0.72
	102/03	87.61	86.32	1.09	85.30	0.93
	102/04	89.34	87.79	1.70	86.09	0.93
	102/05	91.91	89.62	2.08	87.51	1.64
	102/06	94.31	91.85	2.49	89.09	1.81
	102/07	93.93	93.38	1.67	90.59	1.68
	102/08	94.91	94.38	1.07	92.00	1.56
	102/09	97.23	95.36	1.03	93.61	1.74
	102/10	97.29	96.48	1.17	94.93	1.42
	102/11	97.12	97.21	0.76	95.80	0.91
	102/12	97.48	97.30	0.09	96.33	0.55
	103/01	101.56	98.72	1.46	97.60	1.32
	103/02	104.09	101.04	2.35	99.13	1.57
	103/03	101.75	102.47	1.41	99.88	0.76
	103/04	102.21	102.68	0.21	100.70	0.82
	103/05	104.30	102.75	0.07	101.90	1.19
	103/06	103.44	103.32	0.55	102.89	0.97
	103/07	105.30	104.35	1.00	103.52	0.61
	103/08	103.60	104.11	-0.22	103.43	-0.08
	103/09	101.90	103.60	-0.49	103.46	0.02
	103/10	102.01	102.50	-1.06	103.43	-0.03
	103/11	106.68	103.53	1.00	103.82	0.38
103/12	103.85	104.18	0.63	103.89	0.07	
104/01	102.79	104.44	0.25	103.47	-0.40	
104/02	102.08	102.91	-1.47	103.22	-0.24	
104/03	103.77	102.88	-0.03	103.53	0.30	
104/04	102.72	102.86	-0.02	103.65	0.11	
104/05	104.95	103.81	0.93	103.36	-0.28	

全市  
小宅

104/06	105.27	104.31	0.48	103.60	0.23
104/07	102.87	104.36	0.05	103.61	0.01
104/08	99.83	102.66	-1.64	103.24	-0.36
104/09	100.28	100.99	-1.62	102.65	-0.56
104/10	100.12	100.08	-0.91	102.22	-0.42
104/11	101.00	100.47	0.39	101.56	-0.64
104/12	99.32	100.15	-0.32	100.57	-0.98
105/01	99.35	99.89	-0.26	99.98	-0.58
105/02	98.00	98.89	-1.00	99.68	-0.31
105/03	98.21	98.52	-0.37	99.33	-0.35
105/04	97.34	97.85	-0.68	98.87	-0.47
105/05	99.63	98.39	0.56	98.64	-0.23
105/06	100.73	99.23	0.85	98.88	0.24
105/07	98.97	99.78	0.55	98.81	-0.06
105/08	99.52	99.74	-0.04	99.07	0.26
105/09	98.69	99.06	-0.68	99.15	0.08
105/10	97.56	98.59	-0.47	99.18	0.04
105/11	96.41	97.55	-1.05	98.65	-0.54
105/12	99.00	97.66	0.11	98.36	-0.29
106/01	95.76	97.06	-0.61	97.82	-0.54
106/02	96.40	97.05	0.00	97.30	-0.53
106/03	95.82	95.99	-1.09	96.83	-0.49
106/04	96.85	96.36	0.38	96.71	-0.12
106/05	99.02	97.23	0.91	97.14	0.45
106/06	100.16	98.68	1.49	97.34	0.20
106/07	98.91	99.36	0.70	97.86	0.54
106/08	96.82	98.63	-0.74	97.93	0.07
106/09	98.95	98.23	-0.41	98.45	0.53
106/10	96.66	97.48	-0.76	98.42	-0.03
106/11	98.69	98.10	0.64	98.37	-0.06
106/12	98.96	98.10	0.00	98.17	-0.20
107/01	101.23	99.63	1.55	98.55	0.39
107/02	99.08	99.76	0.13	98.93	0.38
107/03	97.35	99.22	-0.54	98.66	-0.27
107/04	99.31	98.58	-0.65	99.10	0.45
107/05	100.24	98.97	0.39	99.36	0.26
107/06	101.63	100.39	1.44	99.81	0.45
107/07	101.82	101.23	0.83	99.91	0.10
107/08	99.21	100.89	-0.34	99.93	0.02
107/09	97.20	99.41	-1.46	99.90	-0.03
107/10	99.04	98.48	-0.93	99.86	-0.05
107/11	100.12	98.79	0.31	99.84	-0.02
107/12	102.81	100.66	1.89	100.03	0.20
108/01	101.47	101.47	0.80	99.98	-0.06
108/02	99.62	101.30	-0.16	100.04	0.07
108/03	98.41	99.83	-1.45	100.25	0.20
108/04	100.07	99.37	-0.47	100.42	0.17
108/05	100.62	99.70	0.34	100.50	0.08
108/06	100.33	100.34	0.64	100.09	-0.41
108/07	99.19	100.05	-0.29	99.71	-0.38