



Taipei City Government

Introduction to Taipei City and Taipei's Expo Displays

Taipei City Government
2010.05.01 ~ 10.31

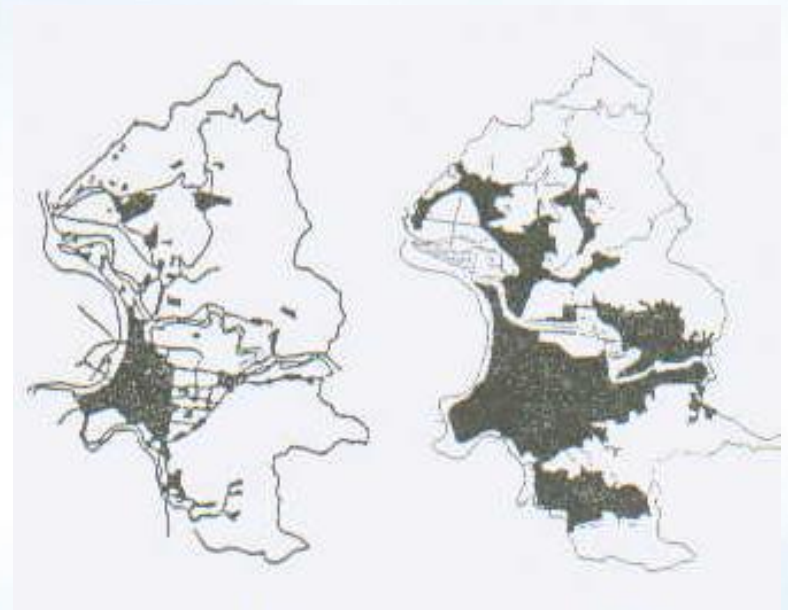
The Development of Taipei City



1. Early settlement and development
1625~1895



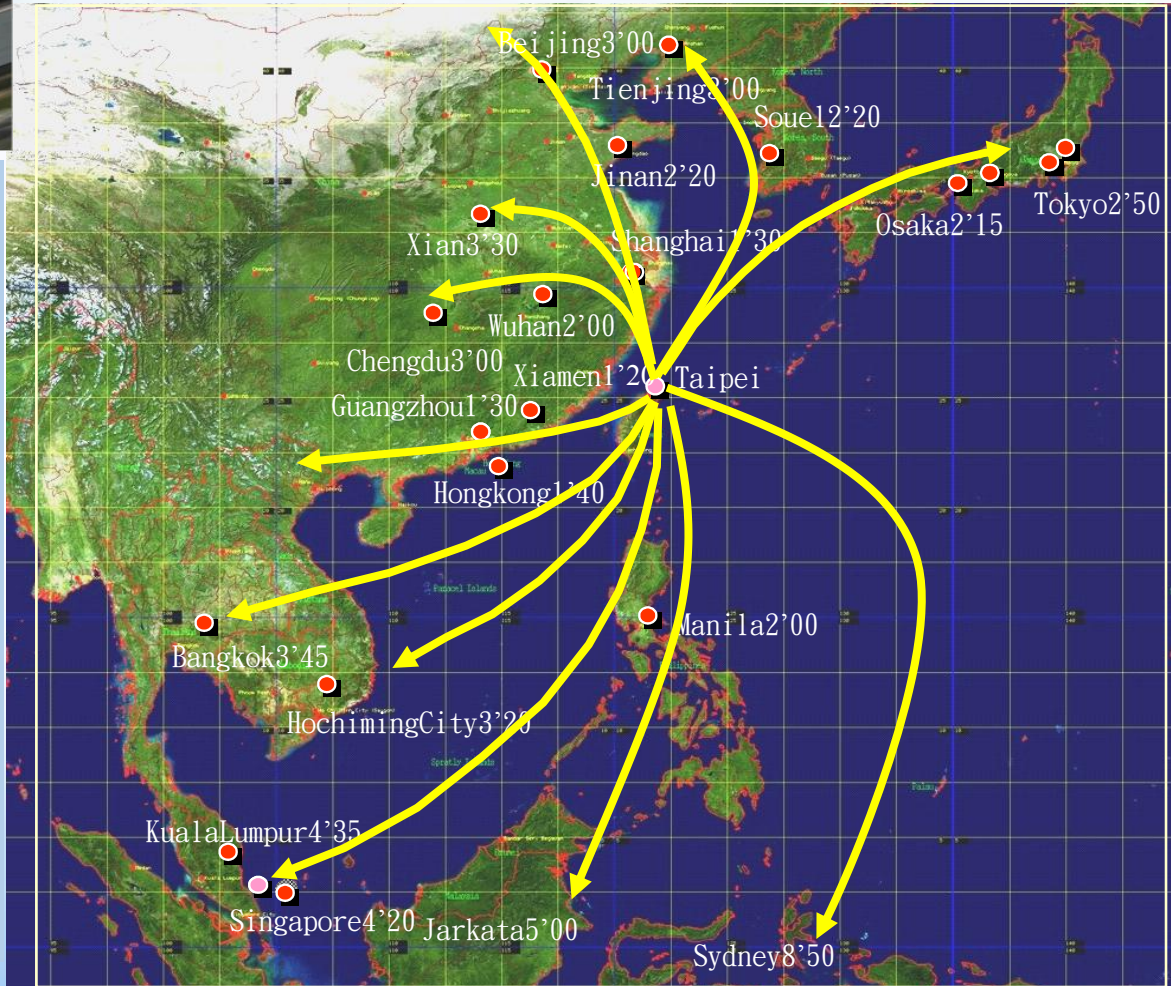
2. The era of Japanese rule
1895~1945



3. The period of rapid growth
1967 until now

Taipei City's Location

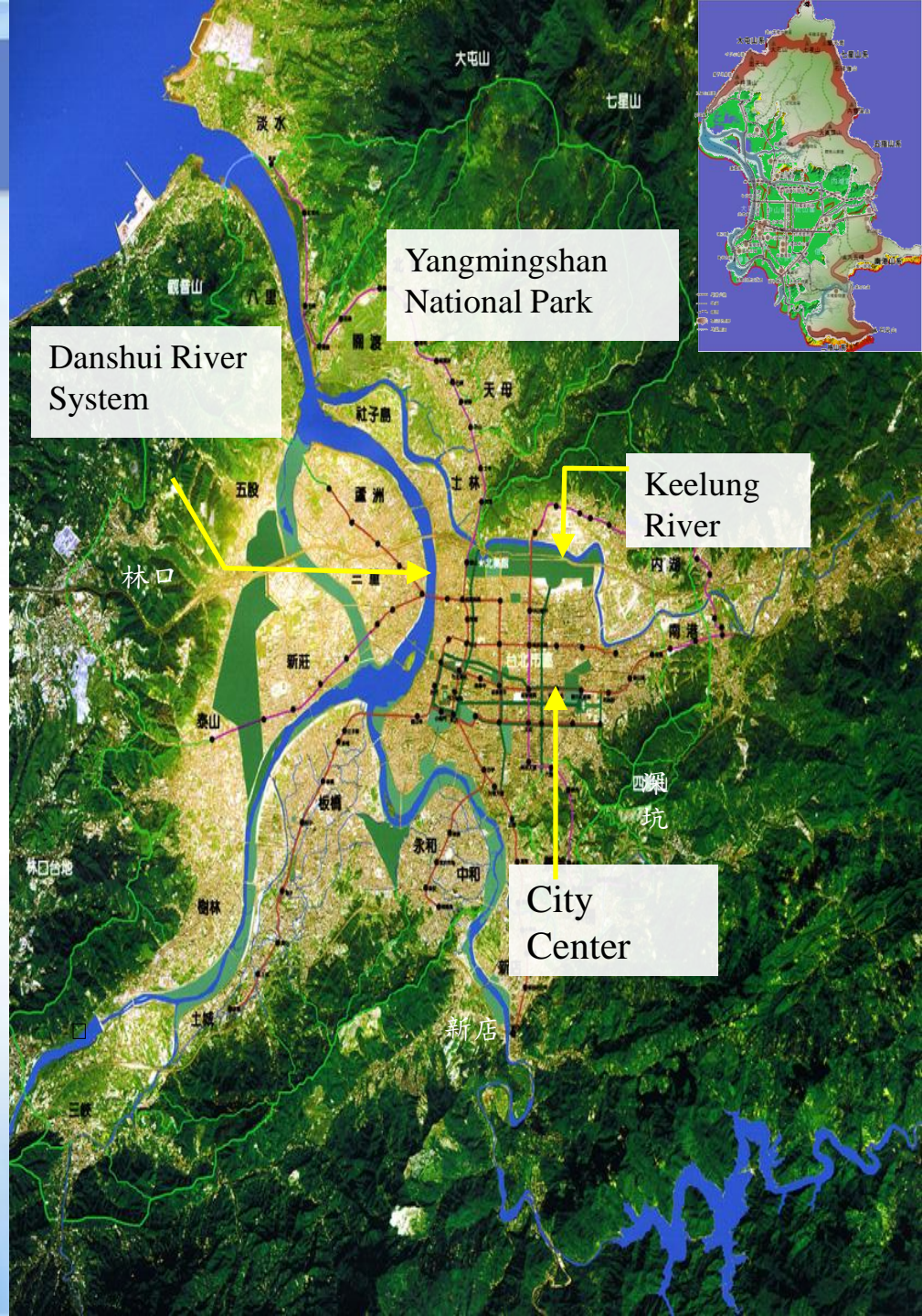
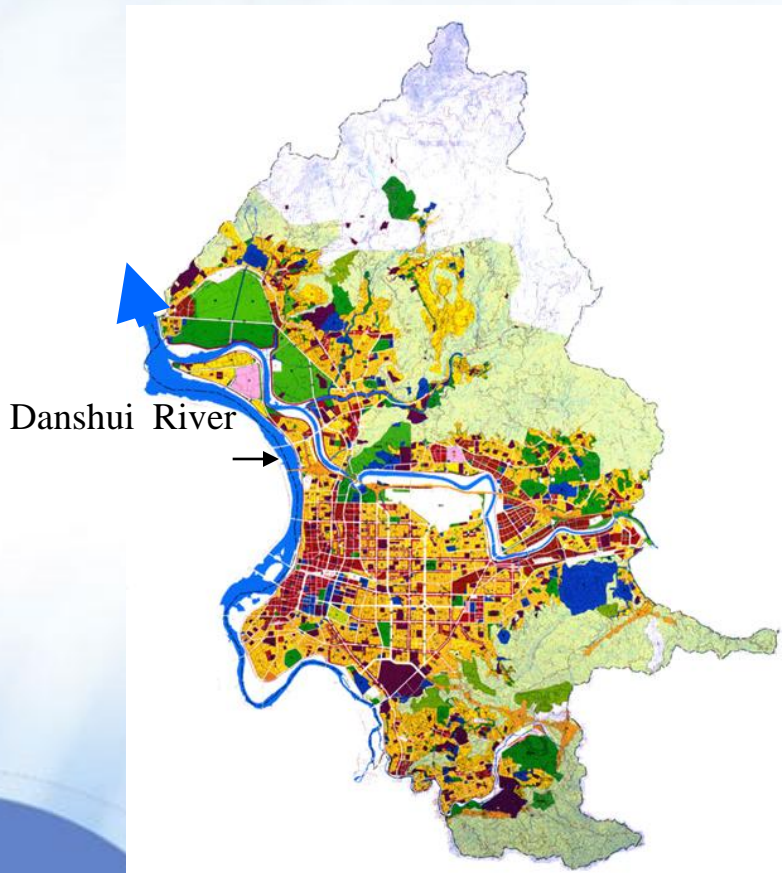
- Distances from other major Asian cities
- Transportation links with other important cities in Taiwan





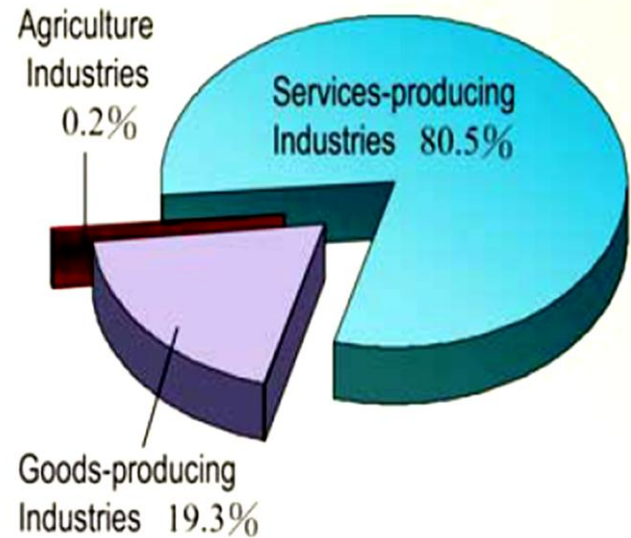
Taipei City

- Area: 271.8 km²
- Sloped land approximately 63% of the total area; level ground (elev. 20m or less) approximately 37%.

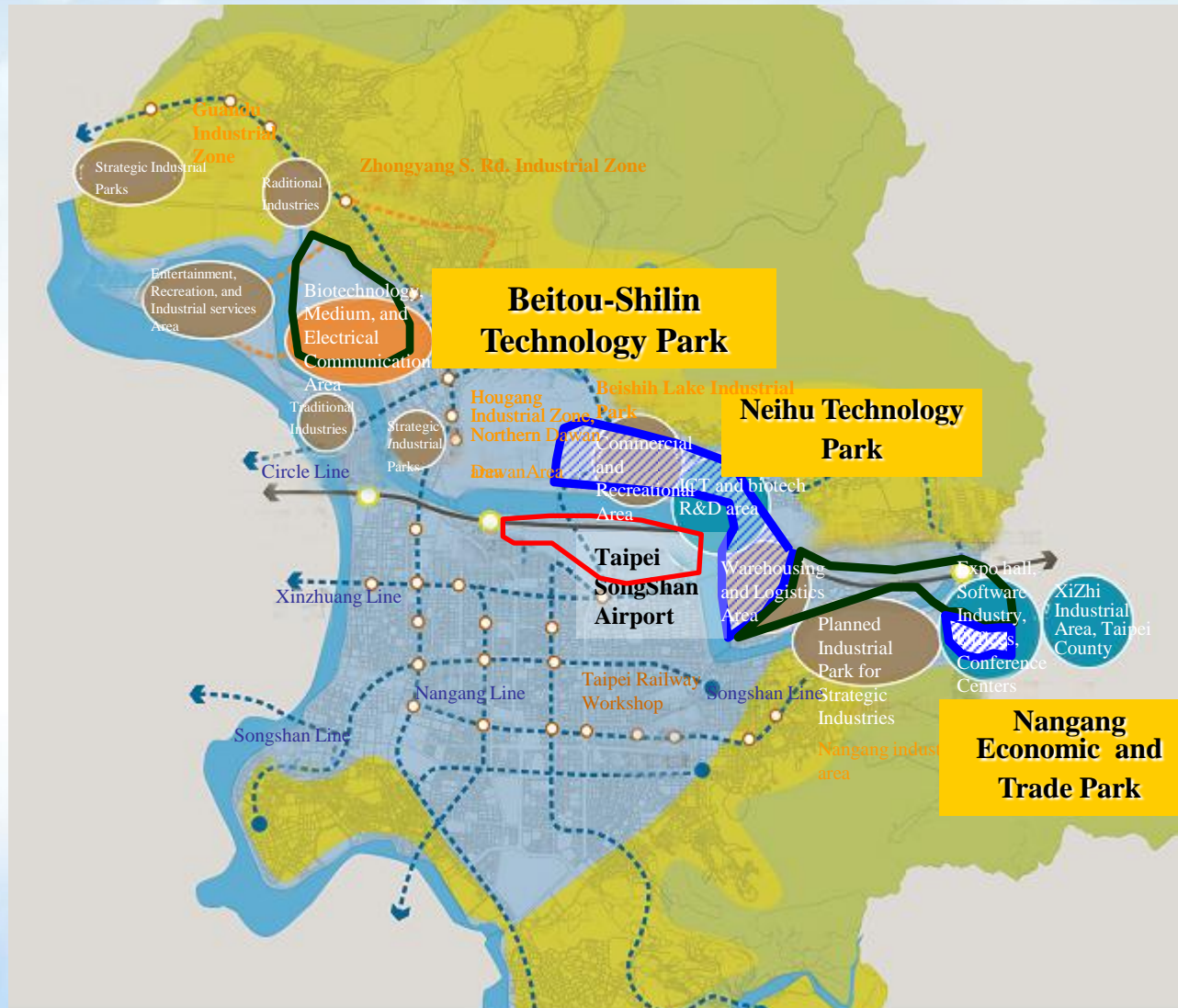


Population and Industrial Development (2009)

- Population: 2.61 million
- Population density: 9,612 people per sq. km. (Asia's 4th highest population density)
- Percentage of college-graduates: approximately 30.58%
- No. of registered companies: 213,260
- No. of employed persons: approximately 1.1 million



Taipei Technology Corridor (TTC)



Resource Recycling, Waste Reduction Green Taipei, Sustainable City

Keep Trash off the Ground

To protect the city's appearance and environment, residents are willing to sacrifice a bit of convenience.

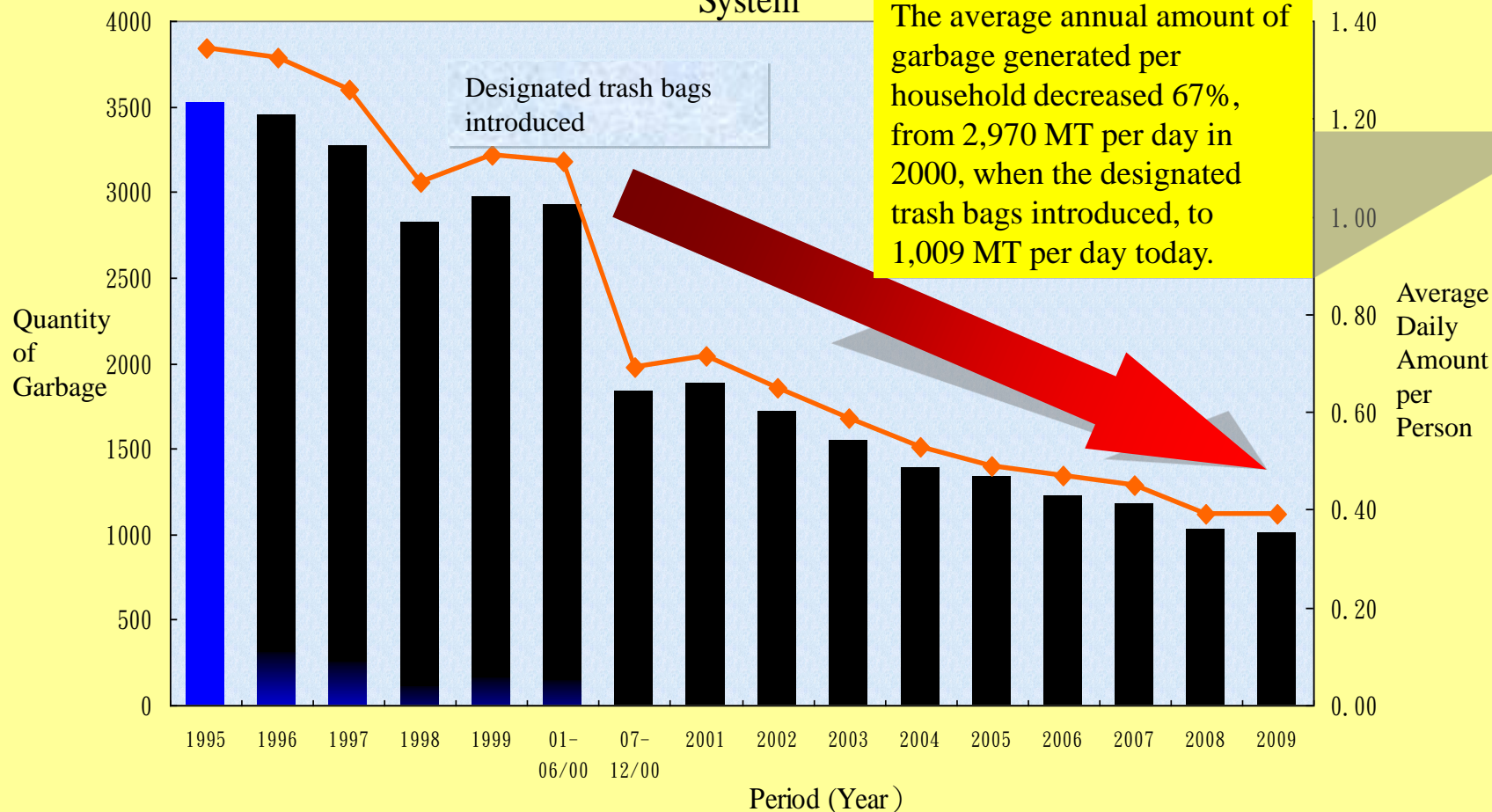
Per-Bag Trash Collection Fee

As expected, the amount of garbage was reduced. Average monthly garbage collection fees per household dropped from NT\$144 in 1999 to NT\$40 in 2008. Although this reduced city government's revenue, it also reduced the cost of waste processing and the burden of finding landfill space.



Reductions in Garbage

Reduction in Household Trash Since Introduction of Designated Trash Bag System



Total Recycling, Zero Landfill

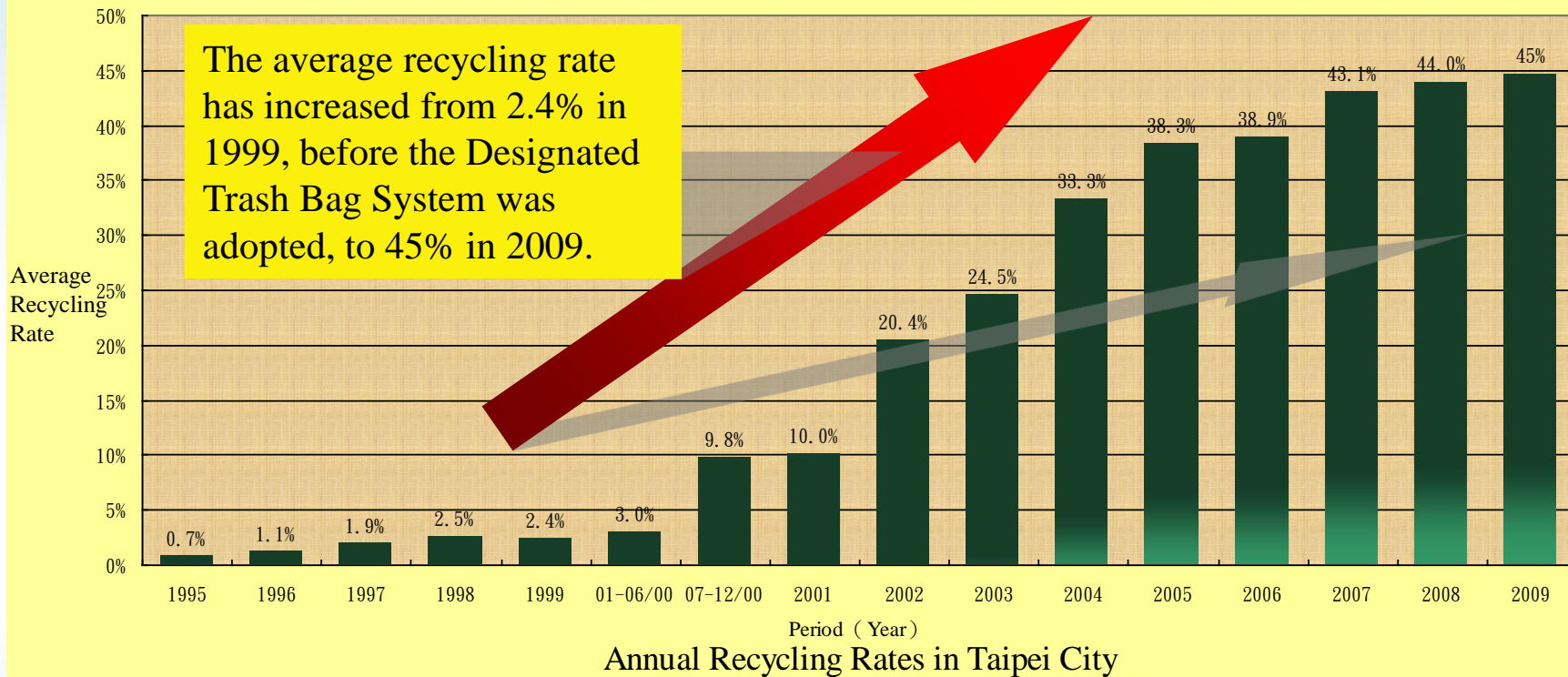
- ❑ Total Recycling
- ❑ Kitchen waste recycling, discarded furniture reuse, emphasis on sorting garbage and reusing incinerator ash
- ❑ Recycling rate has increased from 2.4% in 1999 to 45% in 2009.



Taipei residents have been very cooperative with recycling kitchen waste and sorting their garbage.

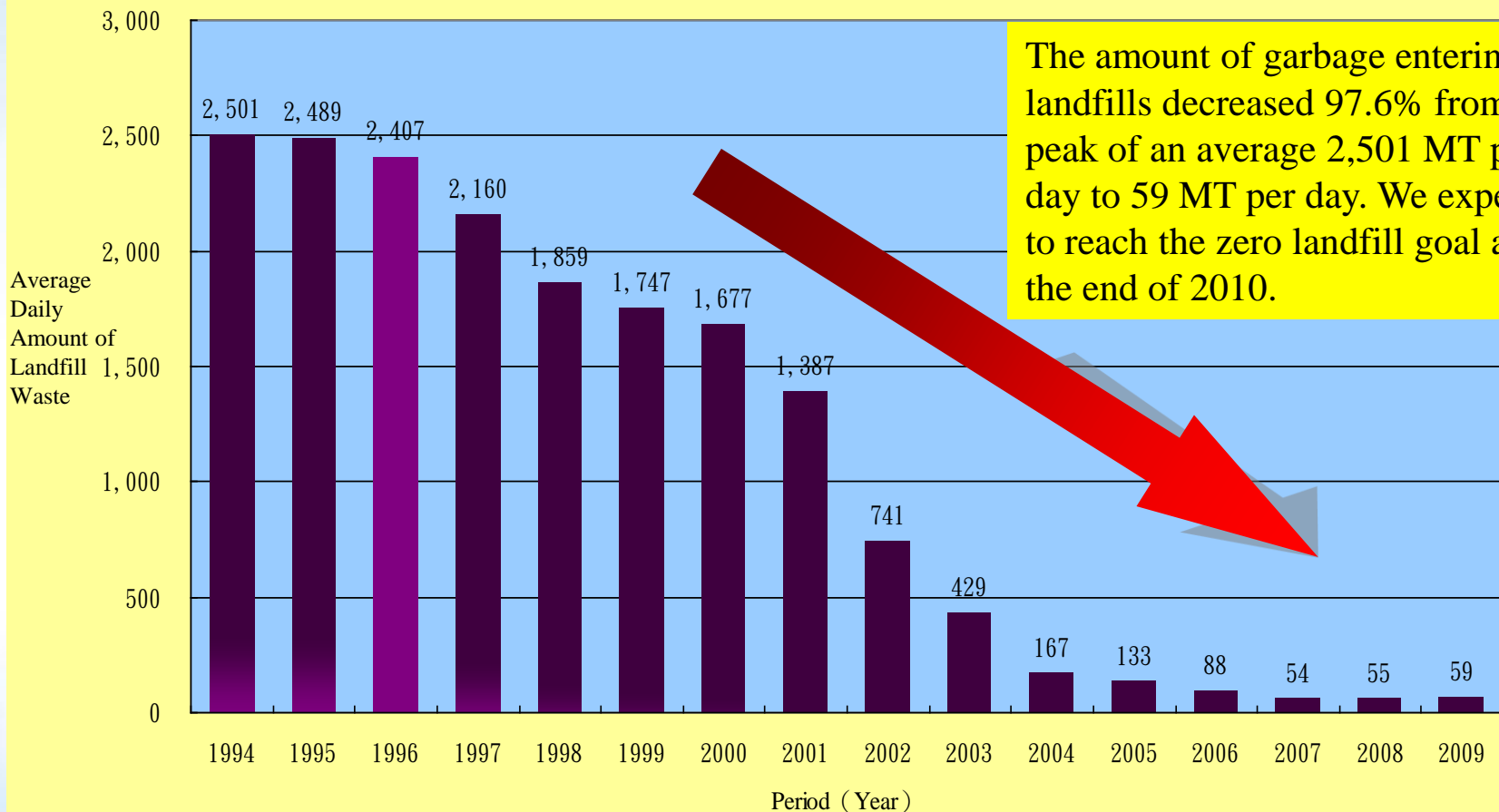


Increase in Recycling Rate



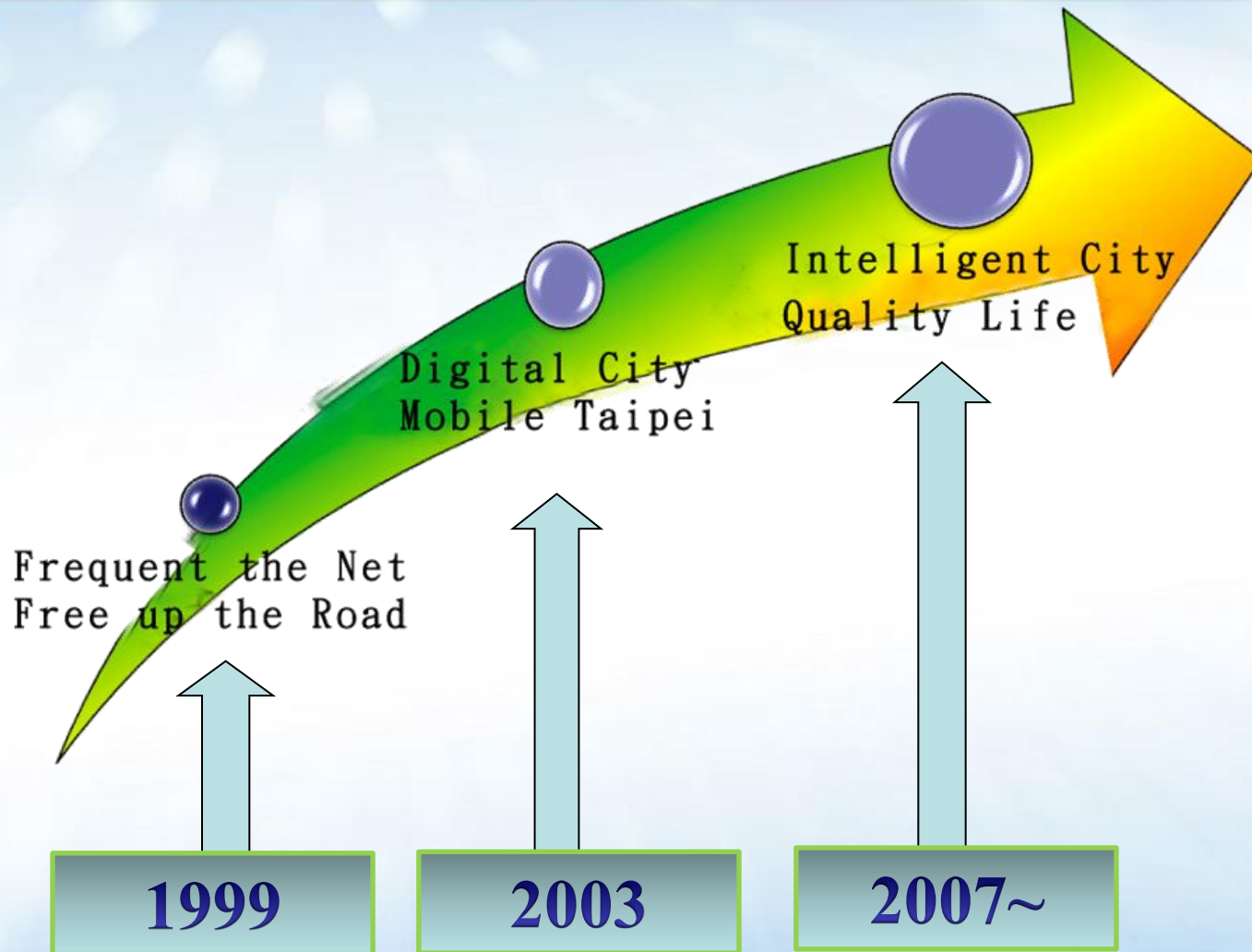
Reductions of Landfill Waste

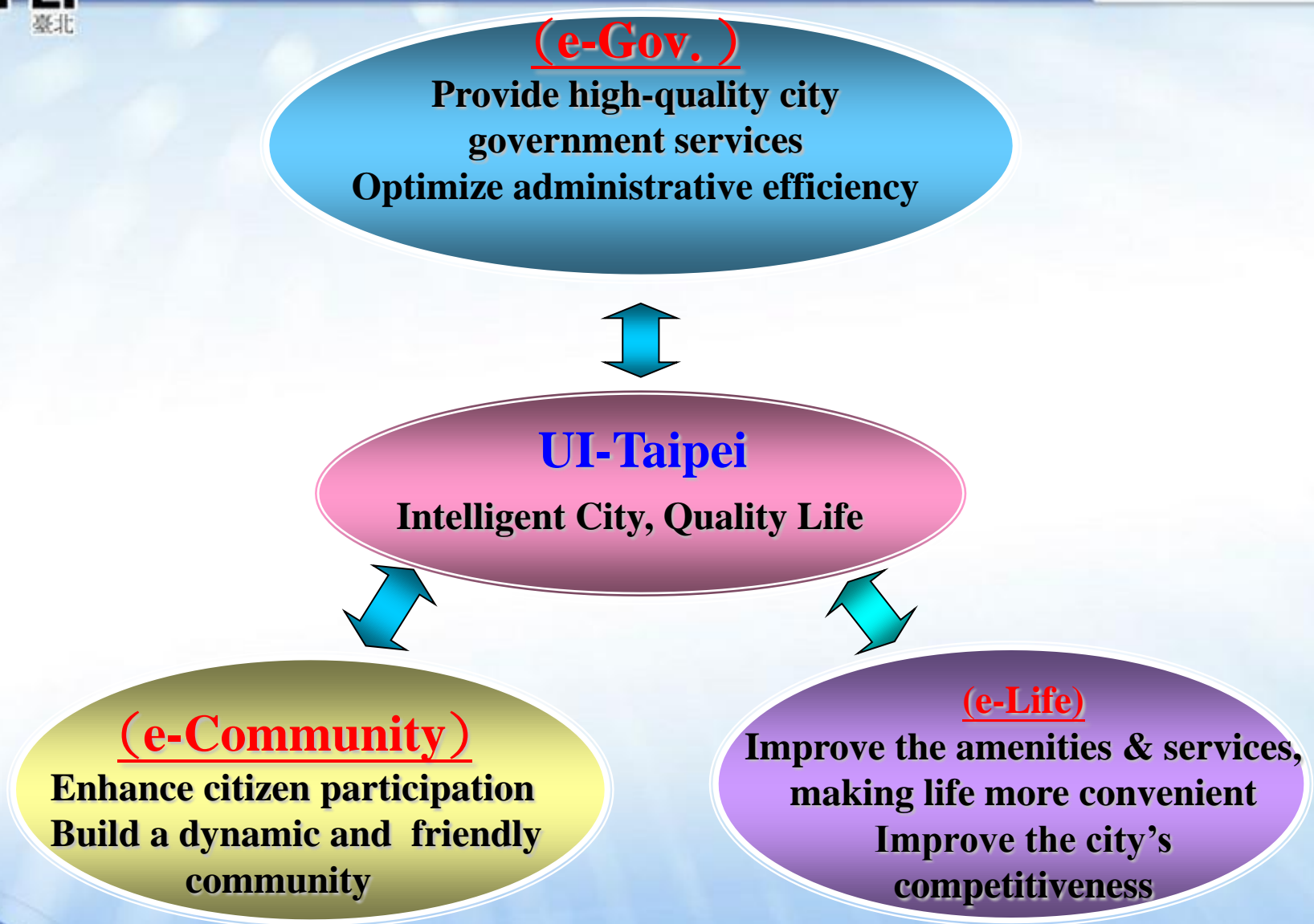
Annual Amounts of Landfill Waste at Shanzhuku Landfill Site



The amount of garbage entering landfills decreased 97.6% from its peak of an average 2,501 MT per day to 59 MT per day. We expect to reach the zero landfill goal at the end of 2010.

Wireless Taipei, Taipei Unwired Intelligent Taipei, Mobile City





IT Development: Wireless Taipei

	Period	Areas Covered	Population Coverage Rate	No. of Access Points
Phase I	09/2004 01/2005	30 MRT Stations	20%	507
Phase II	02/2005 12/2005	MRT Stations and the City Center	50%	2,200
Phase III	01/2006 07/2006	All key areas	90%	4,200

- Population Coverage Rate: 90%
- Number of Access Points: 4,200
- Wireless Schools: 100% (280 schools)

AP



臺北好精彩 TAIPEI

臺北市 行動工作者的天堂
全世界最大 *Wi-Fi* 無線寬頻網路服務

臺北市：臺北捷運車站及地下街、市內各主要道路戶外區域、文化場館、市立圖書館、市立聯合醫院、臺北小巨蛋、7-ELEVEN
全國（不含離島地區）：星巴克、伊是咖啡、摩斯漢堡、漢堡王、台灣高鐵站區

24小時免付費客服專線 0809-010-008

WiMAX applications and services on the MRT



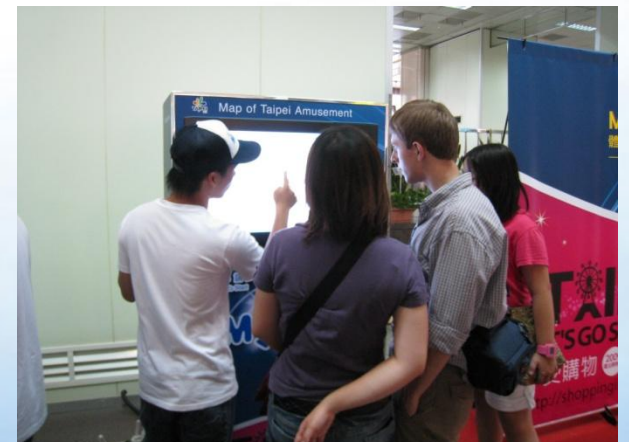
IT Development: Map of Taipei Amusement (MOTA) Guide Service

Map of Taipei Amusement (MOTA) Guide Service

- Integrated city life database, providing downloads on area maps, guides to scenic spots, travel itinerary planning, coupons, etc.
- Residents can look up useful information (medical services, restaurants, lodging, travel, education, entertainment, and more) through the kiosks.



Applications of MOTA



Tourists using MOTA kiosk at the MRT station

IT Development: Healthy Living and Healthcare for Citizens



Demonstrations of Health Care Services

IT Development: the 1999 Citizen Hotline



A Promotional Event for the 1999 Hotline

IT Development: Saving Energy, Reducing Carbon Emissions



Reducing the time needed to find parking spaces



Encouraging people to make more use of mass transit



Solar-powered signs show where the buses are

IT Development: Multi-services with the EasyCard

EasyCard chips embedded in watches, cell phones, cell phone straps, etc.

18 million cards issued



Used for the MRT fares, bus fares, parking lot fees, e-wallet, zoo tickets, student IDs, intelligent library system, etc.

Thank you.

