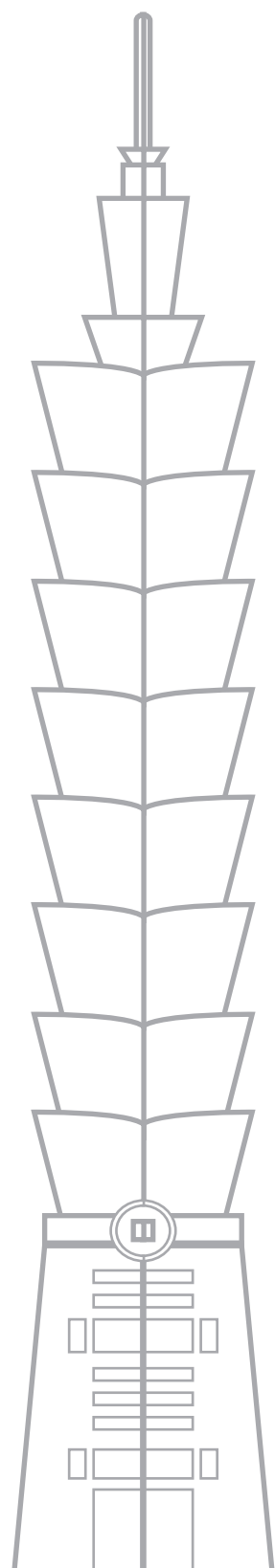




TAIPEI

GATEWAY TO ASIA



Contents

CHAPTER 1

Your No. 1 Choice in Asia: Taipei

CHAPTER 4

Dynamic Industrial Clusters

- 12 / Taipei's Technology Corridor
- 13 / The Nangang Biotechnology Cluster
- 14 / Beitou Shilin Science Park
- 15 / Engine for Startups & Innovation
- 16 / The World's Strongest Industrial Supply Chain
- 17 / Creative Clusters
- 18 / A Truly Cosmopolitan City

CHAPTER 2

Strategically Located for Success

- 03 / Air and Marine Links to Global Markets
- 04 / Convenient Transportation to All of Taiwan
- 05 / The Ultimate 'Land-Sea-Air' Network
- 07 / Reliable and Rapid Logistics
- 07 / Where the World's Logistics Leaders Converge

CHAPTER 5

A Safe and Convenient Living Environment

- 23 / A Friendly City with Style
- 24 / Taipei: Friendly and Convenient
- 27 / A World of Leisure at Your Doorstep

CHAPTER 3

A High Caliber Workforce

- 08 / A Great Environment for Cultivating Talent
- 10 / An Incredibly Diverse Talent Pool
- 10 / Satisfying Your Manpower Needs

CHAPTER 6

Professional Services for Investors

- 31 / Invest Taipei Office
- 31 / Subsidies & Incentives for Taipei Industry
- 31 / StartUP@Taipei Office



CHAPTER

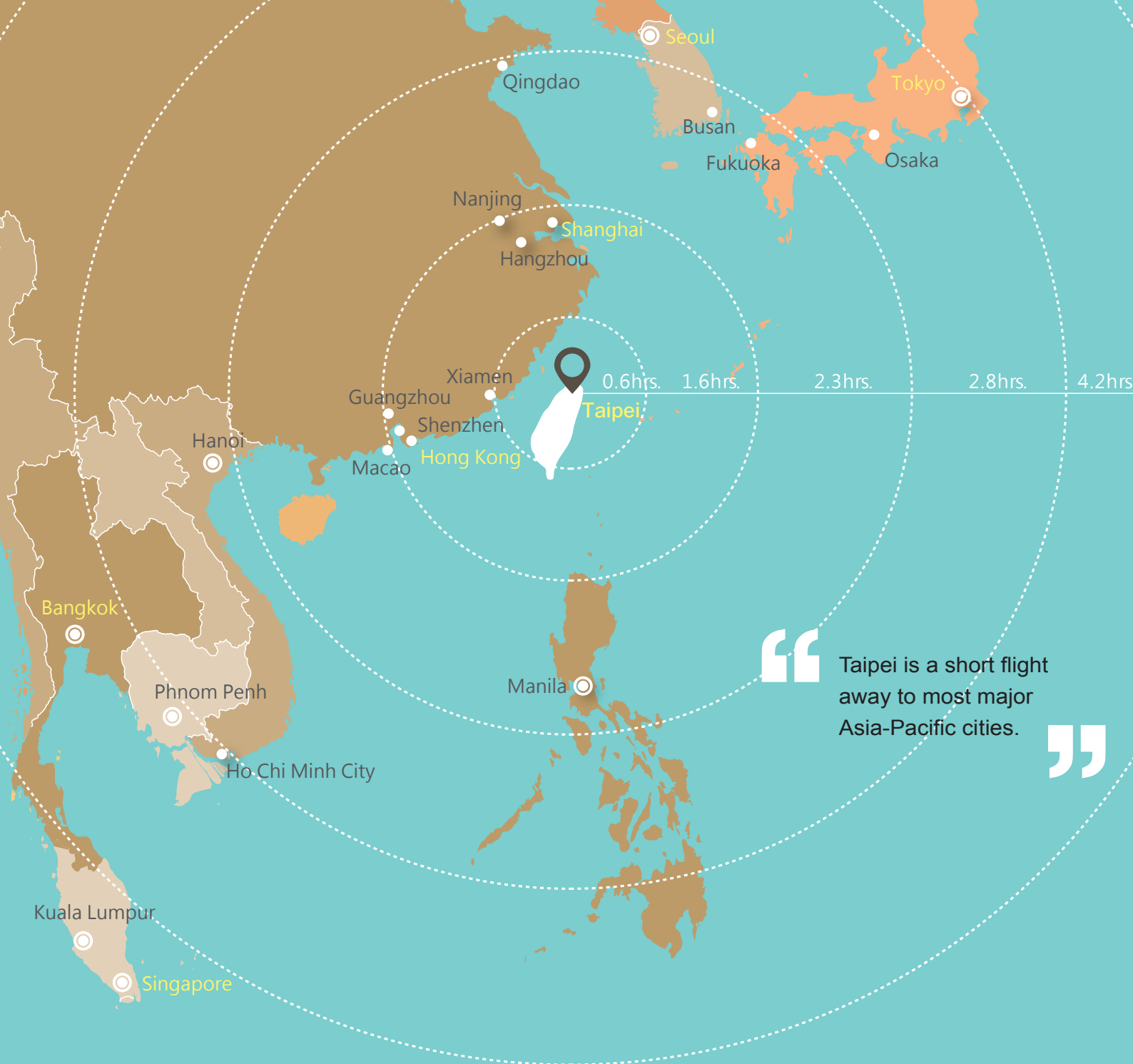
1

Your No. 1 Choice in Asia: Taipei



Asia is emerging as an increasingly important player on the international stage. By 2030, the continent will account for 53% of the world's population and half of global GDP. Ideally positioned in East Asia, Taipei serves as the ideal springboard into the Chinese market and has extremely close trade ties with Japan, South Korea and Southeast Asia. We are excited to invite you to our city and join us in capitalizing on the growing opportunities in the region.

Taipei offers an array of advantages few cities in the region can match: a great environment for startups, outstanding talent, sound policies and extensive legal resources, a high quality of life, a strong supply chain and comprehensive protection of intellectual property rights. In its 2016 competitiveness survey, prestigious business journal *Global Views Monthly* named Taipei the most competitive city overall in all of Taiwan and ranked it No. 1 in the economic, educational, environmental, medical and financial spheres. We are also proud of our free and open environment and budding creative economy, and welcome you to invest here and see your fresh ideas flourish.



CHAPTER 2

Strategically Located for Success

Taipei is Taiwan's political, economic, cultural and transportation hub, featuring core industrial clusters and integrated hardware and software capabilities that surpass those found in any other Asian city. It is home to concentrations of a full range of companies, from big multinational corporations to startups. These strengths, combined with unique geographical and environmental advantages, have made Taipei an increasingly desirable place to be. It was ranked fifth in competitiveness among "emerging world cities" in the 2015 Jones, Lang, LaSalle report "Globalization and Competition: The New World of Cities." It also ranked first overall among mid-sized cities in *fDi Intelligence's* Asia-Pacific Cities of the Future 2015/16 and second among all cities in the "economic potential" category, reflecting the city's boundless opportunities.

Taipei's Investment Environment		
General Features	Geographical Location	Northern Taiwan, 24.9 degrees north latitude, 121.6 degrees east longitude
	Land Area	271.8 square kilometers
	Climate	Subtropical monsoon climate, average temperature 23.8°C
	Population/Density	2,718,000 people; 9,948 people/sq. km.
	Average Park Space	5.30 sq. m. per resident
	Working Population	1,325,000 people
	Employed People per Sq. Kilometer	4,875 people
	Share of Employment by Sector	Agriculture 0.17%; Manufacturing 18.91%; Services 80.92%
	Educational Level of the Employed	60% have a junior college degree or higher; the number of people with MBAs the highest in Asia
	Education	More than 99% have received 12 years of education
Economic Indicators	Total Revenues	US\$420 billion
	Top 5 Revenue-generating Sectors	Wholesale & retail trade; financial services; manufacturing; information and communications technology; construction

Statistics to the end of 2015



Air and Marine Links to Global Markets

Taipei is strategically located at the heart of the Western Pacific island chain stretching from Japan to Borneo and neighbors the huge China and Southeast Asia markets. Served by two major seaports – Taipei Port and the Port of Keelung northwest and northeast of the city – and two major airports – the country's main gateway Taoyuan International Airport and city airport Taipei Songshan Airport – the city stands out as an ideal international trade hub.



The average flight time from Taipei to most major cities in East Asia is about four hours, with Shanghai, Seoul, Tokyo, Hong Kong, Bangkok and Singapore all a relatively short flight away. The five major ports in the Asia-Pacific region (Hong Kong, Manila, Shanghai, Tokyo and Singapore) can be reached in an average of 53 hours, and cargo can be quickly transshipped at Taipei ports to markets around the globe.

Convenient Transportation to All Parts in Taiwan

Taipei is the most important transportation hub in Taiwan, and Taipei Main Station stands at the center of the network. Home to the Taipei subway system, Taiwan's high-speed rail line and regular express trains and inter-city buses, the station offers convenient connections everywhere and serves more than 500,000 passengers a day. The north-south high-speed rail line makes day trips possible to most parts of Taiwan, and five nearby cities and counties can all be reached within an hour, effectively linking industrial corridors in northern Taiwan.

Strategically
Located for
Success

Transportation Access in Taipei



Air Transportation (Taipei Songshan Airport)

Handles over 6 million passengers a year
Can reach Shanghai, Seoul and Tokyo within 3 hours



Taiwan Railways Administration

Handles around 620,000 passengers a day
Covers more than 30 stops between Keelung and Hsinchu in northern Taiwan



Taiwan High-Speed Rail

Transports around 150,000 passengers a day
Can reach Taichung within 1 hour and Kaohsiung within 2 hours



Long-Haul Buses

More than 400 routes served by about 4,000 buses; system handles 1.74 million passengers a year



Taipei Metro

System has 5 main lines and 117 stations and is recognized as the most reliable in the world; serves more than 2 million riders a day



YouBike Public Bicycle Rentals

More than 70,000 bikes available at over 200 stations that can be rented automatically around the clock; system has the highest turnover rate of any like it in the world and is used more than 50,000 times a day



Taxis

More than 30,000 in the city, some equipped with around-the-clock wireless or satellite dispatching abilities, making it extremely easy to call a cab



In 2016, Taiwan's central government launched a plan to develop "five innovative industries": an Asian Silicon Valley, smart machinery, green energy, the defense industry, and medical biotechnology. The places where these industrial clusters will take shape – "Asian Silicon Valley" home Taoyuan; precision machinery manufacturing center Taichung; green energy center Tainan; military shipbuilding center Kaohsiung; and biotechnology center Nangang along with the Hsinchu Biomedical Science Park in Zhubei and the Southern Taiwan Science Park in Tainan – are all within two hours of Taipei by high-speed rail. An office in Taipei provides a huge edge in accessing the industries of the future

The Ultimate 'Land-Sea-Air' Network

Taiwan was the first country in the world to adopt fully electronic tolls on its national freeways, and its road network can get you anywhere. Taipei boasts an extensive "land-sea-air" transportation network of its own, featuring an extensive road system offering seamless connections to Taiwan's two major north-south freeways; an airport within city limits (Taipei Songshan Airport) and easy access to Taoyuan International Airport outside the city; and two international ports close by.

 <p>Land Transportation</p>	<p>10 major east-west roads and 14 north-south roads that give access to 3 national freeways</p>
 <p>Sea Transportation</p>	<p>2 international free-trade ports (Taipei Port and the Port of Keelung)</p>
 <p>Air Transportation</p>	<p>2 international airports (Taipei Songshan Airport, Taoyuan International Airport)</p>



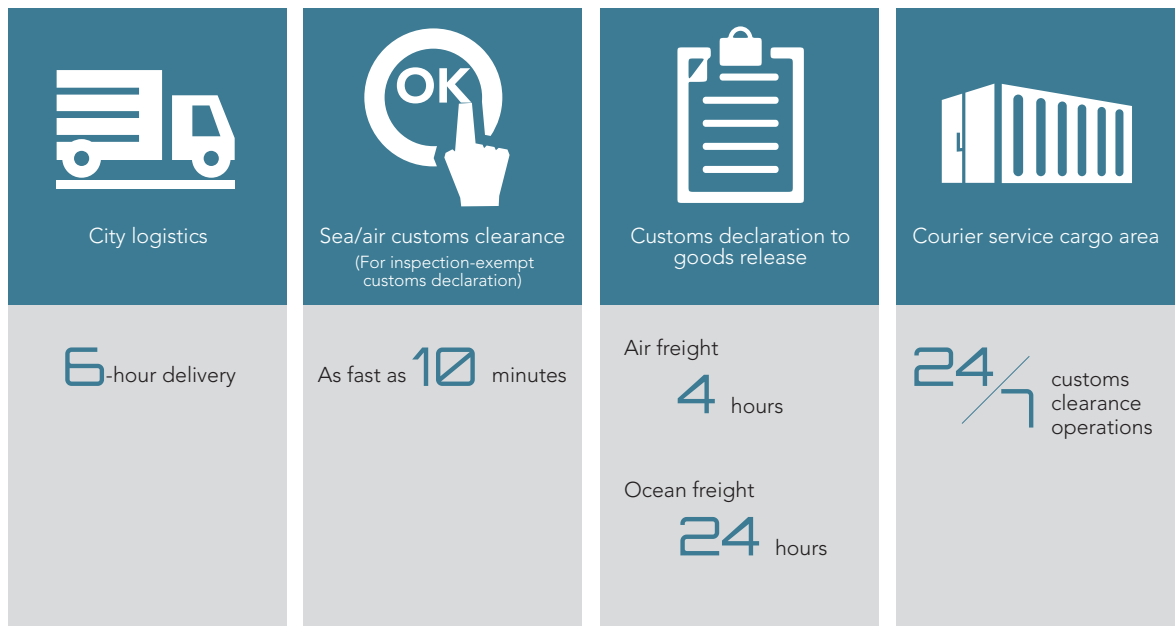
Strategically
Located for
Success





Reliable and Rapid Logistics

More than 10,000 companies in Taiwan are involved in the domestic and international logistics, warehousing and transportation businesses, and over half of them are based in Taipei. In this era of e-commerce, domestic logistics providers are constantly creating new ways to upgrade their services, and those in Taipei now aim to deliver goods within six hours of when they were ordered online. Integrated cloud-based platforms support these operations by effectively tracking deliveries in real time. Linked "land-sea-air" networks offer fast and cost-effective solutions, and the convergence of Taiwan's contract manufacturing prowess, warehouse management capabilities and other customized services can meet the most demanding e-commerce challenges and make businesses in the city more competitive.



Where the World's Logistics Leaders Converge

The world's top logistics companies are well aware of Taiwan's logistics strength. UPS and DHL use Taiwan as an important transshipment center, and global courier companies TNT and Fed Ex and Japan's second biggest logistics provider, Kintetsu World Express, have also set up major presences or international operations centers here. These commitments reflect Taiwan's critical role in the global transportation system and the potential it offers for supply chain and logistics companies in the Asia-Pacific region.



Provided by Plan b



Provided by Plan b

CHAPTER

3

A High Caliber Workforce

Taiwan ranked 23rd in the world and fourth in Asia for talent in the IMD World Talent Report 2015, and also finished well ahead of neighboring countries. As Taiwan's capital, Taipei boasts an impressive talent pool spanning a multitude of fields that offers both qualitative and quantitative advantages. Academia Sinica, home to Taiwan's elite research talent, leads the way and is complemented by major economic and industrial research institutions. A sound grade-school education system and specialized training also contribute to the city's excellent workforce.

A Great Environment for Cultivating Talent

Taipei has nearly 30 universities and vocational colleges that produce about 60,000 talented graduates a year with backgrounds in several fields, and the city takes pride in its high-caliber workforce, in which more than 60% of employees have a university degree or higher. Many people directly enter the labor market after receiving a basic education, but Taipei also organizes special courses and professional training opportunities to nurture specialized talent for the city's businesses.

A High
Caliber
Workforce





An Incredibly Diverse Talent Pool

Taiwan is renowned for having the best OEM, ODM and other contract manufacturing capabilities. As a key player in Taiwan's economic and industrial development, Taipei has cultivated an abundance of technical and managerial talent with considerable manufacturing, research, design, and marketing management expertise and plenty of international experience suitable for any international company.

The "knowledge economy" has emerged as an emphasis with the rise of the internet age in the last two decades, and Taipei now has more biotechnology companies, web portals, and knowledge-intensive service enterprises than anywhere else in Taiwan. These services are backed by high-caliber people proficient in mobile technologies who are playing decisive roles in the global IoT and ICT sectors with the support of Taiwan's robust manufacturing and hardware supply chain.

Taiwan has also relaxed its regulations to attract more foreign talent, making it easier for foreign nationals to obtain visas and reside in Taiwan and add to Taipei's diverse human resources.

Satisfying Your Manpower Needs

Taipei's manpower costs are very competitive compared to other cities in Asia, and it's relatively easy to find the talent you need through online job banks and recruitment platforms. Recruiting directly on campuses or forming internship programs with universities or international organizations such as AIESEC and the ECCT can also help identify potential employees. With Hsinchu only half an hour away by bullet train, businesses in Taipei are also able to draw on the expertise of technicians employed in the Hsinchu Science Park.

A High
Caliber
Workforce

Dynamic Industrial Clusters

Known as a "technology island," Taiwan is extremely competitive in the tech and manufacturing sectors, with 70% global market shares in several semiconductor, optoelectronic and information and communications technology products.

Taipei has many inherent competitive edges as Taiwan's business hub, and those advantages have been accentuated over time. The city now boasts a B2B network that reaches all corners of the globe, an integrated industrial supply chain and a comprehensive, efficient and flexible support structure that translates into seamless operations, from R&D to production. There is no better city in Asia for developing and commercializing a new product and producing it at a consistently high quality level.

The presence of dynamic clusters in Taipei has attracted entrepreneurs keen on innovation and major domestic and global brands. More than 50% of the amount invested in Taiwan by overseas investors and nearly 70% of the foreign companies in the country are concentrated in Taipei. They have come to appreciate Taipei's ideal environment for an R&D center or operations headquarters. Taipei is also the biggest financial services center in Taiwan and an increasingly important financial hub in Asia. It is home to the headquarters of 80% of the country's financial institutions and nearly 11,000 financial services outlets, including more than 1,000 branches of domestic and foreign banks.



Dynamic Industrial Clusters

Taipei's Technology Corridor

The Nangang Software Park and the Neihu Technology Park in eastern Taipei form a powerful tech corridor that is particularly strong in information and communications technology and biotechnology. Impressive "knowledge-economy" clusters have taken shape here in the R&D, design, and marketing services fields, and 160,000 of Taiwan's top tech professionals converge on the parks every day.

The Neihu Technology Park is home to 4,500 companies and 12 R&D centers that have annual revenues exceeding US\$130 billion. It also hosts the highest concentration of corporate operations centers in the city. The Nangang Software Park is renowned as one of the world's top three "smart" technology parks, and its world-class industrial environment has attracted such leading international corporations as NEC, AMD, SONY and IBM. Specializing primarily in biotechnology, IC design, and digital content, the companies in the park have annual revenues of US\$13.33 billion, and a third of the corporate headquarters and R&D centers in Taipei are located there.

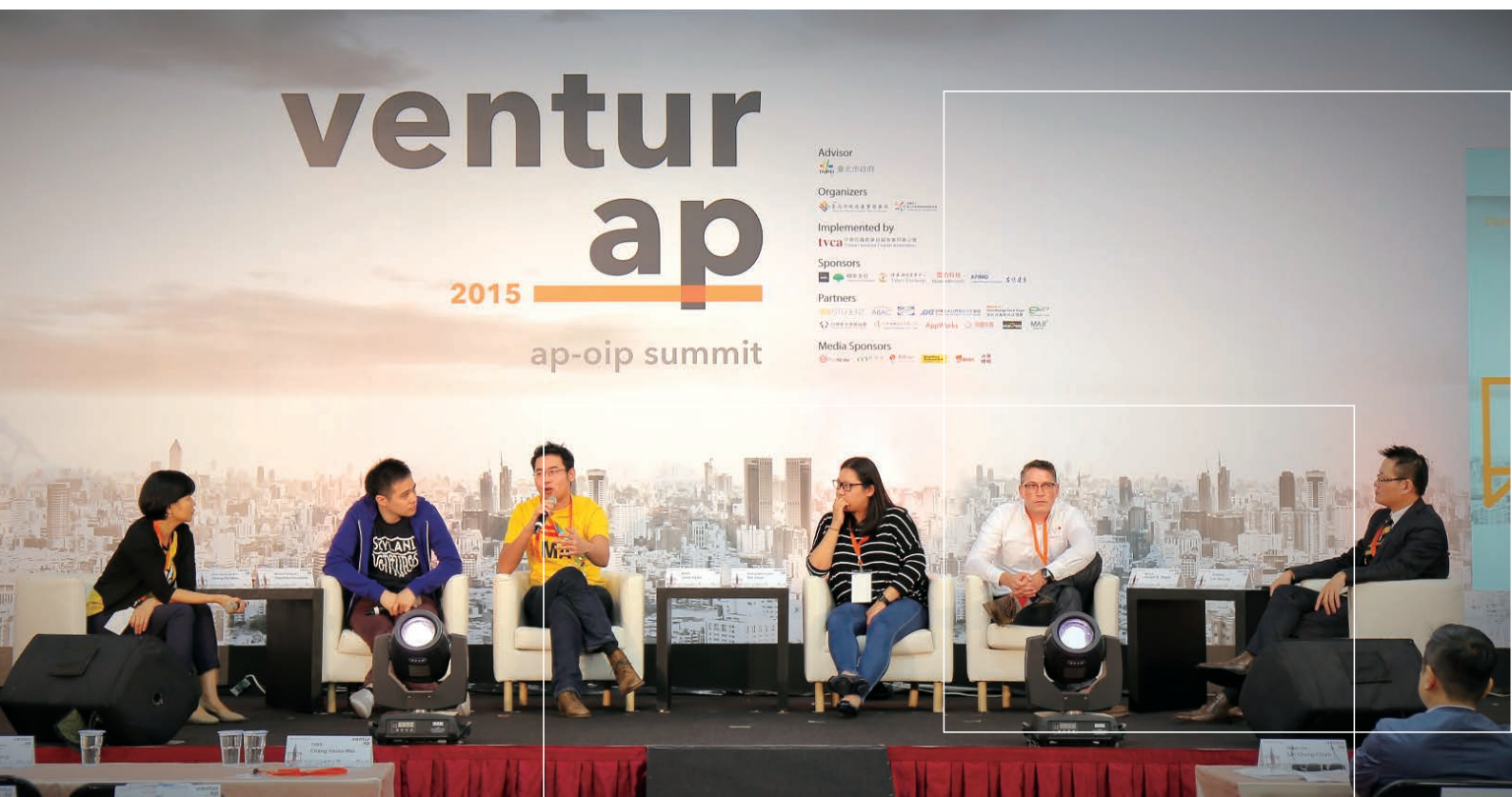




The Nangang Biotechnology Cluster

Taipei possesses a strong foundation for the development of the biotechnology sector. It is home to 20 university biotechnology departments, 40% of Taiwan's biotechnology incubators, and 90% of Taiwan's venture capital companies, and can meet all of your needs, from startup investment, R&D partners, startup incubators and talent development organizations to complete supply networks and a vibrant clinical market. Nearly 400 biotechnology companies already make Taipei their home, and nearly half, or about US\$4.33 billion, of the country's biotechnology revenues originate in the city.

"Regulations on Taipei City's Self-management of Industrial Development" were put in place in 2011 to promote economic vitality in the city and encourage innovation and investment. A "Taipei City Industrial Development Fund" was established at the same time, and it has distributed US\$2.67 million in subsidies to biotech companies since 2013 to fuel startup, R&D and brand development in the sector.



Dynamic Industrial Clusters

Beitou Shilin Science Park

Taipei is currently planning a third science and technology park – the Beitou Shilin Science Park – as an extension of the successful corridor established in the eastern part of the city. The planned park, covering 194 hectares, is envisioned as a development base for the technology, biotechnology and ICT sectors of the future. Twenty-five hectares will be exclusively devoted to high-tech companies and linked to the Nangang and Neihu zones to create an even more robust science and technology corridor.

Shezidao near Shilin will be redeveloped in the future as an eco-friendly green axis and waterfront park that will enrich the entire area. Current plans envision this zone as home mainly to companies in the biotechnology, media, IT, electronics, communications and smart agriculture sector, extending the area's knowledge-intensive industrial corridor.

Engine for Startups & Innovation

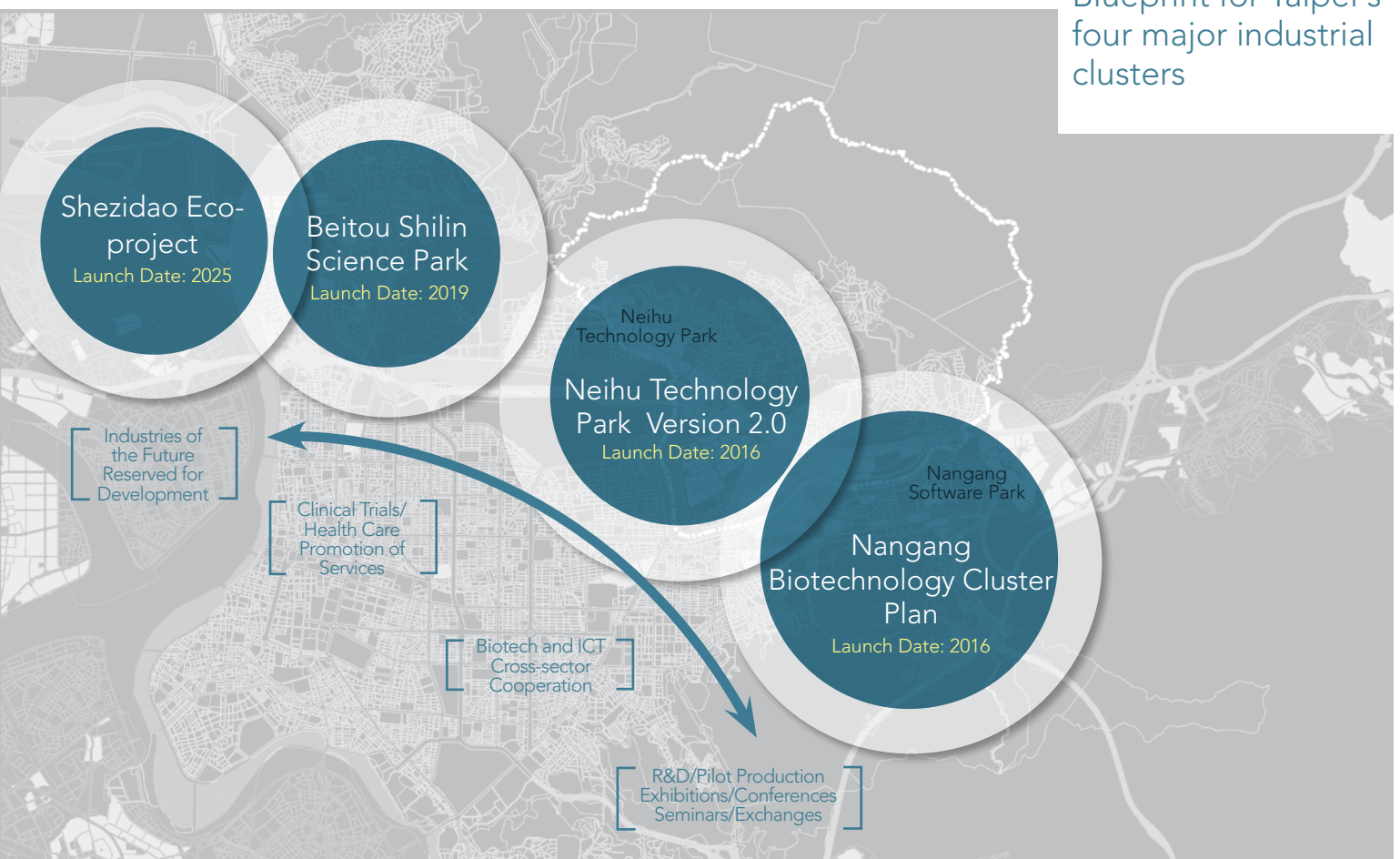
Taiwan ranked first among Asian countries in the 2016 Global Entrepreneurship Index, an indication of its strong entrepreneurial spirit. Taipei fully embraces that spirit, and its abundance of small factories, labs, startup accelerators and other platforms makes it a great base for launching a new product or technology. The city has more than 180 startup platforms, incubation centers, coworking spaces, social network centers, angel investor groups, business incubators, startup accelerators and venture capital funds that make Taipei a dynamic center for innovation and entrepreneurship. If you're looking to start a business, you'll find plenty of sources of support in the city.

Startup incubators and accelerators, such as AppWorks Ventures, Garage+, the Center for Innovation Taipei, and Taiwan Startup Stadium, are constantly sprouting up in the city. They are all dedicated to bringing the spirit of innovation and entrepreneurship to Taiwan and catching the eye of global investors. The Taipei government has also devised workspaces, services and incentives to support new entrepreneurs and the sharing economy. Some of the beneficiaries, including smartscooter maker gogoro and FabLab Taipei, have used Taipei as a test market for their products.

For more guidance on getting a business going, one potential resource is "StartUP@Taipei," a customized startup consultancy service that opens doors to key resources and hosts meetings with experienced business leaders and potential investors to help new entrepreneurs fulfill their dreams.

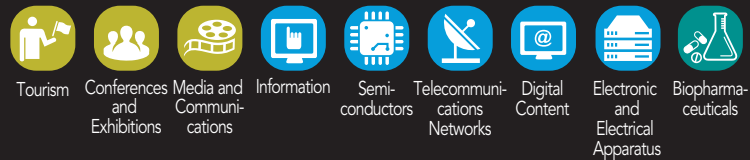
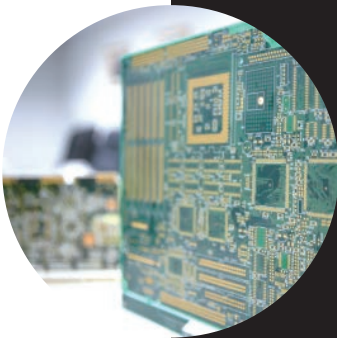


Blueprint for Taipei's four major industrial clusters



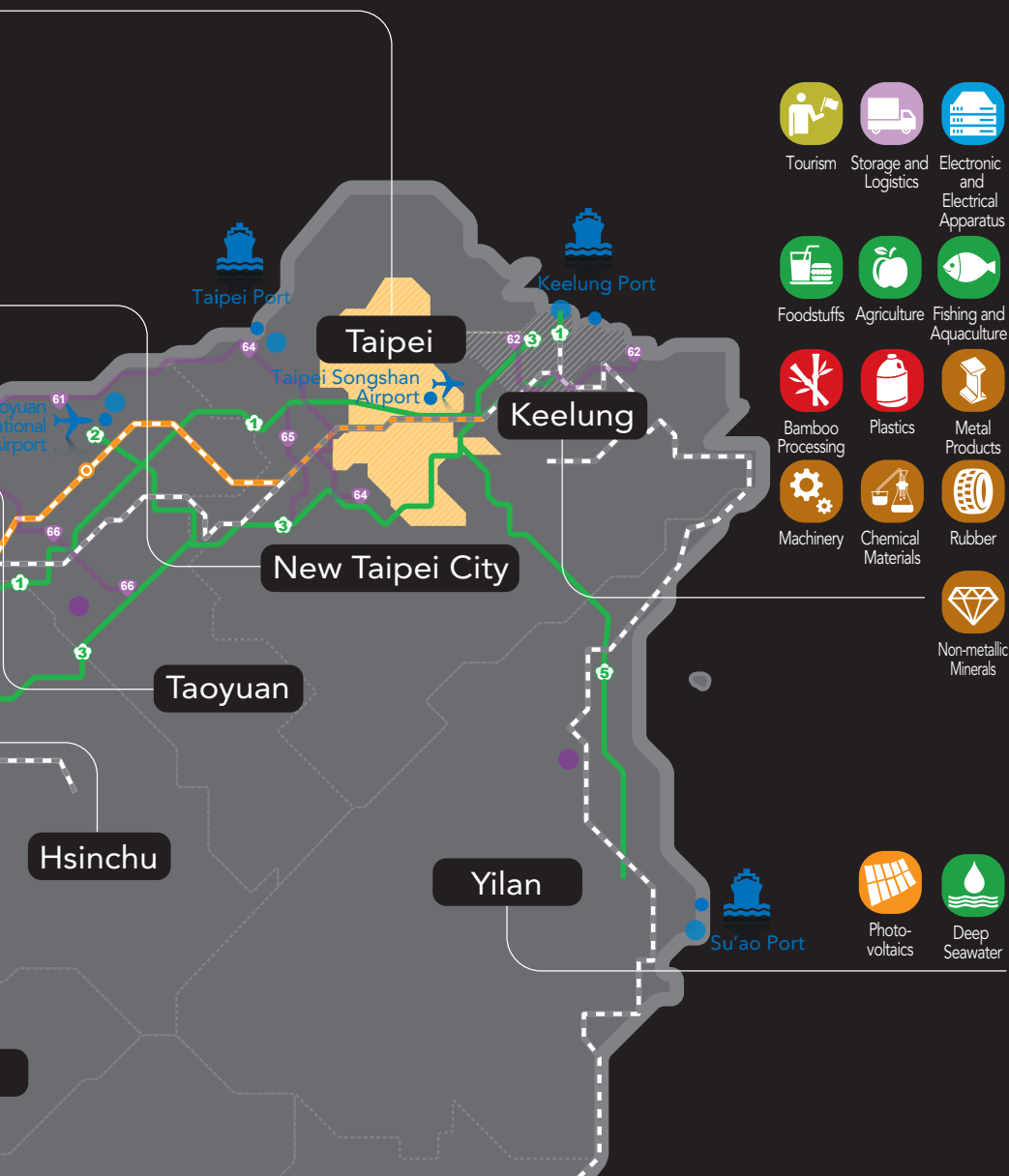
The World's Strongest Industrial Supply Chain

The combination of the Taipei Technology Corridor with industrial clusters in northern Taiwan gives businesses access to suppliers in several industries within two hours' time. This access along with Taipei's knowledge-based services can help companies complete a product's R&D, prototyping and testing in the shortest period of time and quickly capitalize on opportunities in global markets.



Creative Clusters

Taiwan has made a strong impact in design, culture and creativity on the international stage. Ranked 13th in the world in creativity competitiveness, it has won more than 2,100 awards at prestigious design competitions around the world, including the iF Design Awards and Red Dot Awards in Germany, G-Mark Awards in Japan and the International Design Excellence Awards in the U.S. In a survey of "Design Talent Favored by Companies" by *30* magazine in 2015, of the 10 most highly rated design schools in Taiwan, five are located in the Greater Taipei area. They produce about 5,000 graduates a year for the domestic design services market. Taipei was also cited in *fDi Intelligence's* Asia-Pacific Cities of the Future 2015/16 report as a "hotbed for innovation," with 24,280 patents recorded between 2010 and 2014, the third highest of all cities in the study. Taipei features several creative parks that give expression to cultural and creative businesses, including Huashan 1914 Creative Park, Songshan Cultural and Creative Park, the Taipei Pop Music Center in Nangang, the Taipei Artist Village, and more than a dozen cultural and creative street zones. These design spaces and creative landmarks are redefining the city's vibe and showcasing the energy and passion of the city's creative sector.





Dynamic Industrial Clusters

A Truly Cosmopolitan City

In the age of globalization, Taipei's inclusiveness and free and open environment have vaulted it seamlessly into the ranks of Asia's truly international cities. Few Asian cities can match its mix of world-class infrastructure, comprehensive intellectual property rights protection, and friendly, barrier-free atmosphere, and its special charm has enticed foreign business people to invest and settle in the city.

Taipei has been ranked among the elite in several global indexes and studies, including fDi's "Asia-Pacific Cities of the Future," Mastercard's "Global Destination Cities Index," and Ericsson's "Networked Society City Index," and has scored well for "competitiveness" and "economic/investment potential."

An International Convention City

Taipei is a thriving convention town renowned for hosting the world's second biggest computer show – Computex Taipei – and the world's third biggest cycling show – Taipei Cycle. The city ranks fifth in Asia and 30th in the world for the number of major international meetings and exhibitions held, and it ranked second in Asia in 2014 for growth in exhibition space sales. The World Trade Center and Nangang Exhibition Hall are ideal venues for taking the pulse of global commerce.

International Competitions and Expos

Taipei has received widespread acclaim for the many prominent international sports events and expositions it has hosted, from the 21st Summer Deaflympics in 2009 and the Taipei International Flora Exposition in 2010 to World Design Capital events in 2016. In 2017, the city will host the Summer Universiade, which will welcome up to 10,000 athletes from more than 100 countries. In preparing for any of these large-scale extravaganzas, Taipei embraces low-carbon and energy-saving principles.





Important international competitions and exhibitions in Taipei



Dynamic Industrial Clusters

A Democratic Society, Guided by the Rule of Law

Taiwan's legal system is stable and transparent, with intellectual property rights protections that meet international standards. Procedures for registering intellectual property have been streamlined, an intellectual property court has been created, and IPR judicial reviews have become more professional. More broadly, Taiwan is politically and financially stable, and its adherence to the rule of law guarantees people's rights and freedoms at both the central and local government levels. Foreign nationals can invest and run their businesses with peace of mind, and they have access to a complete range of professional services that ensure stable operations in the city.





A Friendly Environment without Language Barriers

Finding a place to live or stay, shopping, eating out, and riding public transportation can be a nightmare in some cities but not in Taipei because of helpful signs and online guides available in several languages. English is commonly spoken and can be used to get around fairly easily, and there are also a growing number of people proficient in Japanese, Korean and Southeast Asia languages who can lend a helping hand to native speakers of those languages.



A Safe and Convenient Living Environment

CHAPTER

5

A Safe and Convenient Living Environment

A sophisticated tapestry that weaves together elegant alleys and fashionable boulevards or nostalgic traditions and modern trends, Taipei is far more than just Taiwan's political, economic and cultural hub. A colorful, diverse and people-friendly town, Taipei offers a high quality of life, a good legal environment and modern services and facilities. Whether you're in Taipei on holiday, on business or to live long-term, it's easy to fit in and be captivated by the city's charm.



A Friendly City with Style

A pleasant climate; a rich cultural heritage; a diverse human landscape – all traits that set Taipei apart. City residents and municipal authorities have joined hands in forging a convenient, welcoming capital city that is a great place to live.

Close to Nature

Taipei's geographical setting is ideal for anyone who loves the outdoors. Both the mountains and the sea can be reached within 30 minutes by public transportation, and tree-lined roads and green parks are common features within the city. An excellent place for walking or hiking, Taipei offers natural beauty almost anywhere you go.

A Warm, Humanistic Vibe

Home to a century-long historical tradition and a rich cultural heritage, Taipei bustles with unusual vitality and creativity influenced by the interplay between its many historical and religious influences. Overseas visitors are often left with positive impressions of the city, in no small part because of the friendly nature, appreciation of diversity and orderly conduct of Taipei residents.

A Vision of a Low-carbon City

Taipei has long been committed to creating a sustainable city built on a low-carbon environment and eco-friendly practices. Several environmental policies, such as keeping trash off the ground and charging for garbage bags, have been in place for more than 10 years, leading to high recycling rates and a reduction in waste generation. The city's low-carbon priorities revolve around developing "green transportation," devising "energy-saving initiatives" and forging a "green lifestyle." Public transportation campaigns have been particularly successful, boosting the system's rate of usage to 62.7%, the highest of any city in Taiwan, while urban farming and garden city initiatives have brought lush greens to the cityscape.



A Safe and Convenient Living Environment

Taipei: Friendly, Safe and Convenient

Sound infrastructure, modern technical services, high-quality medical care and convenient shopping –just some of the traits that helped Taipei once again capture the top spot in *CommonWealth Magazine's* City Happiness Survey in 2015. It's a city that gives people peace of mind, whether living or traveling here.

Convenient Digital Services

A dynamic e-commerce system makes living in Taipei even more convenient, and such a system cannot survive without a reliable digital network. The city was ranked fourth in Asia and 11th in the world in the 2016 Networked Society City Index, which gauged sustainable urban development and ICT maturity. It joined the ranks of "smart" cities in 2004, and today more than 90% of Taipei households have computers and FTTH (fiber-to-the-home) coverage exceeds 80%. This seamless telecommunications network means fast internet connections in cafes, hotels, convenience stores and subway stations and high-speed data access whether you have a 3G or 4G device.

Visitors to Taipei can apply for the city's free Wi-Fi service – Taipei Free – at any major travel hub, including Taipei Songshan Airport and Taipei Main Station, to take advantage of nearly 10,000 hotspots around the city to go online at public venues. There are no hidden fees, giving users free rein to satisfy their thirst for information.



Safe Living Spaces

Whether you live in Taipei or visit the city for business or pleasure, you will find a safe and free environment in which you can even go out in the middle of the night without worrying about your personal safety. Taipei's crime rate has always been relatively low compared to other cities in Asia, and in 2015, the city was ranked 13th in the world in the *Economist's* Safe Cities Index and fifth in Asia (behind Tokyo, Singapore, Osaka and Hong Kong).

Dedicated bicycle lanes are being put in on Taipei sidewalks, and people can easily rent bikes through the YouBike system to go anywhere in the city in the most carbon-friendly way possible. Taipei is also a great walking city, with well-maintained and pleasantly landscaped roads and sidewalks that offer an enjoyable and safe way to get around.

Professional Medical Care

Taiwan's medical technology and quality of care are on a par with that of advanced countries. The country's top-notch health care services and universal health insurance system have been praised around the world and reported on by international media.

Taipei's medical resources are the envy of the country, with more than 3,000 health care institutions, including eight advanced medical centers, seven regional hospitals, 22 community hospitals and countless clinics. The caliber of Taiwan's medical professionals and the quality of care and devices are up to international standards, giving residents and visitors medical security.

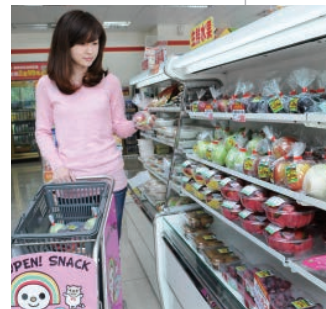
Foreign nationals employed in Taiwan or who have Alien Resident Certificates can enroll in the country's national health insurance system and are entitled to the same medical rights as local residents. Several Taipei institutions, including National Taiwan University Hospital, Shin Kong Memorial Hospital, Cathay General Hospital and Chang Gung Memorial Hospital, offer overseas visitors exclusive medical services.



Convenience Around the Clock

Of Taiwan's more than 10,000 convenience stores, roughly 20% of them are in Taipei, giving the city the highest concentration of convenience stores anywhere in the world. Beyond offering basic necessities 24/7, outlets of the four major chains (Family Mart, 7-Eleven, OK and Hi-Life) also offer a wide range of services, from paying bills and sending things by courier to doing laundry, buying tickets or developing film. They are ideal helpers for both residents and visitors alike.

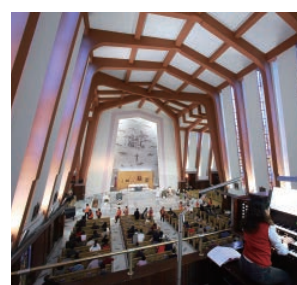
Several other services are available around the clock. A renowned bookstore chain, automated libraries, gyms, pharmacies and big box retailers attend to people's late-night needs, and night markets, bars, fast food restaurants, and other late-night food places give visitors a taste of a city that never sleeps.



A City of Religious Tolerance

The full gamut of religions and belief systems, including Taoism, Buddhism, Christianity, Catholicism, Islam, Mormonism and many others, all co-exist harmoniously in Taipei. It's not unusual to see gathering places for several different religions on the same street and even next to each other.

A Safe and
Convenient Living
Environment





A World of Leisure at Your Doorstep

Surrounded by captivating natural beauty and a rich cultural heritage, Taipei has an incredible range of tourist destinations and appealing restaurants and hotels. Visitors can immerse themselves in the city's historical nostalgia or enjoy amazing performing arts spectacles. And for those who want to take it easy, the city has plenty of ways to help you relax, from spas and hot springs to leisure and recreational pursuits.

Many find this rich local culture and diversity of engaging experiences truly worthwhile. In MasterCard's 2015 Global Destination Cities Index, Taipei had the highest overnight visitor growth from 2009 to 2015 among the world's top 20 destination cities and ranked second in length of stay among the top 20 Asia-Pacific destinations at more than six days.

A Multitude of Recreational Choices

Taipei has plenty of places worth exploring, from the Taipei 101 skyscraper, National Palace Museum, Longshan Temple and Hsing Tian Kong to Yangmingshan National Park, Huajiang Wild Duck Nature Park, Guandu Nature Park, Maokong, the Beitou Hot Springs and world famous night markets. There are also 20 hiking trails in the major mountains surrounding the city and boats operating along the city's "Blue Highways," adding an extra dimension to outdoor leisure in Taipei.





Provided by Department of Cultural Affairs, Taipei City Government



A Business Traveler's Second Home

Taipei is perfectly suited for business travel with its comfortable environment, high standards of service and world-class business traveler services. There are more than 25,000 rooms in different classes of hotels to choose from in a 270-square-kilometer area that can all make any business traveler feel right at home.

Enticing Cultural Experiences

Taipei is home to a veritable smorgasbord of museums, cultural centers, art galleries and performance spaces, including unique performing arts venues such as the Taipei Performing Arts Center, urban regeneration stations and cultural and creative parks. These many cultural nerve centers infuse the city with unique flair and serve up a diverse offering of cultural experiences every day.

A Foodie and Shopper's Paradise

A veritable gourmet's paradise, Taipei is capable of satisfying even the most discerning palate. A diverse food culture, from truly authentic Chinese cuisines and sumptuous offerings from cultures around the world to fusion restaurants, delicious street food, Taiwan's world famous bubble tea, dumplings and beef noodles, can all be easily found in the city. Taipei also features distinctive shopping areas with their own commercial circles, markets, department stores and shopping centers that converge into a convenient shopping environment offering the latest fashion and jewelry, jade pieces and foreign brands.





A Safe and Convenient Living Environment

Outdoor Recreation

In Taipei, green landscapes are everywhere, from the lush mountains surrounding the city to its more than 800 public parks and wide open spaces along its riverbanks. City residents never have to travel very far to enjoy a green space, and a network of riverside parks offers great recreational opportunities, including connected bike trails.

Great Place for Biking

"YouBike" bicycles have the highest turnover of any public bike rental system in the world and are a common sight around town. More than 200 rental stations have been set up in the city to give people a convenient, eco-friendly way to get around or take advantage of Taipei's six riverside bike trails or more than 100 kilometers of dedicated bike paths. Bikes can be rented with Taipei's stored value EasyCard that can also be used on the Taipei and Kaohsiung subway systems or to pay for Taiwan railway tickets or public bus fares around Taiwan.

Fitness Centers Just a Step Away

In Taipei, exercise and playing sports is made easy. The city has several gyms and sports clubs and countless community facilities with basketball, tennis, badminton and volleyball courts and baseball fields. Each of the city's 12 districts have well-equipped public sports centers where residents can work out, swim, shoot arrows, play squash, or try their hand at rock climbing walls.



Everything You Need under One Roof

Convenient Business Services

- Review of Places of Business
- Factory Registration Services
- Financing Services

Creating Market Opportunities

- Matchmaking Services
- Connections to World Markets
- Subsidies for Overseas Exhibitions

Talent Cultivation & Development

- SME Accupass (knowledge academy)
- Meetings with Noted Entrepreneurs
- Forums on Incentives and Subsidies
- Employment Counseling

Business Incentives and Subsidies

- R&D, Brand Subsidies
- Startup Subsidies, Incubators and Angels
- Land Tax, Loan Subsidies
- Wage, Training Subsidies

Innovation and Investment Services

- Startup Consulting
- New Business Assessment
- Referral to Taipei Exchange Incubation Board for Startups and Acceleration Firms

CHAPTER

6

Professional Services for Investors

The Taipei City Government offers a wide array of services to potential investors through a single contact point. Among them: matchmaking services, place of business reviews, factory registration, financing, talent recruitment, startup consulting and business subsidies.

Under the "Statute for Investment by Foreign Nationals," foreign investors are eligible for any of a wide range of incentives, such as technology and R&D subsidies, preferential land rents, low interest loans, and incentives for setting up in a particular location, that can help lower costs. As for financing, Taipei is the world's 24th biggest financial center as of March 2016. It hosts the headquarters of 80% of Taiwan's financial institutions and 90% of venture capital companies and boasts an open financial environment that allows the free flow of capital and easy access to specialized financial services.

Invest Taipei Office

Taipei established an "investment services office" to provide real-time assistance to investors in clearing up doubts and obstacles as they try to set up businesses. The office's most basic function is to offer accurate information and advice on existing regulations, the tax code, investment incentives and R&D subsidies and help with investment environment assessments. Just as importantly, it assists businesses in solving problems as they come up during the investment process by coordinating with central government agencies and making use of local government resources. At the

same time, the office works with investors to find the best fits for them, whether helping them find the ideal factory or office space, matching them with suitable business partners, or identifying talent that meets the new company's needs.

Subsidies & Incentives for Taipei Industry

Taipei offers a full range of subsidies and incentives for business startups, R&D, brand development, or new investment to promote investment and innovation. From 2011, when regulations on subsidies were put in place, to the end of October 2016, 1,937 applications for subsidies were submitted, and 883 were approved. A total of US\$31.63 million in subsidies were distributed over that time, driving US\$580 million in investment in innovation and leading to an increase of US\$3.79 billion in output value and 6,300 new jobs.

StartUP@Taipei Office

Innovation and entrepreneurship have emerged as global economic trends, and Taipei is at the forefront of the movement with the top-ranked environment for startup ecosystems in Asia. The city launched the StartUP@Taipei Office to make sure entrepreneurs have access to the information and services they need to succeed, including financial assistance, such as subsidies and low-interest or interest-free loans, and a full range of consulting services. Among them: one-on-one counseling services; free consulting, assessment, and guidance services for planned or new businesses; and business operations analyses and financial planning and advisory services. In addition, the office organizes monthly lectures by prominent entrepreneurs to help them pass on the experience and inspire and guide those determined to follow in their footsteps.

Professional Services for Investors



Investment and Startup Contacts

Invest Taipei Office

Services: Investment services and facilitation/Business partner referrals/Market intelligence

Website: <http://invest.taipei>

Telephone: 1999 citizen hotline ext.4518 ~ 4519

Dedicated line: +886-2-2757-4518 ~ +886-2-2757-4519

Address: No. 1 Shifu Rd., Xinyi District, Taipei 11008 (North Area 2F)

StartUP@Taipei Office

Services: Startup consulting/financing, loans

Website: <http://www.startup.taipei/>

Telephone: 1999 citizen hotline (or 02-2720-8889 for calls from outside the city)
ext. 6498, 1431, 6616

Address: No. 1 Shifu Rd., Xinyi District, Taipei 11008 (North Area 1F)

Subsidies & Incentives for Taipei Industry

Services: Review of subsidy applications by businesses

Website: <https://www.industry-incentive.taipei>

Telephone: 1999 citizen hotline (or 02-2720-8889 for calls from outside the city)
ext. 1428, 1429, 6625

Address: No. 1 Shifu Rd., Xinyi District, Taipei 11008 (North Area 1F)

Taipei City Office of Commerce

Services: Company/business registration

Website: www.tcooc.taipei.gov.tw

Telephone: 1999 citizen hotline (or 02-2720-8889 for calls from outside the city)
ext. 6485, 6491

Address: No. 1 Shifu Rd., Xinyi District, Taipei 11008 (North Area 1F)

Industry and Business Division, Department of Economic Development, Taipei City Government

Services: Factory registration

Website: <http://doed.gov.taipei>

Telephone: 1999 citizen hotline (or 02-2720-8889 for calls from outside the city)
ext. 6562, 6565, 6572

Address: No. 1 Shifu Rd., Xinyi District, Taipei City 11008 (North Area 1F)







For callers in Taipei City, please dial 1999 for the Citizen Hotline.
For callers outside of Taipei City, please dial 02-2720-8889.



Department of Economic Development, Taipei City Government
Address / Shifu Rd., Taipei, 11008, Taiwan, R.O.C.
Website / <http://www.doed.gov.taipei>

