



TAIPEI CITY STATISTICAL ABSTRACT 2005



Taipei City Statistical Abstract

Department of Budget, Accounting and Statistics, Taipei City Government June, 2006



ISSN 1814-3083



9 771814 308002

GPN:2005700034



DEPARTMENT OF BUDGET, ACCOUNTING AND STATISTICS
TAIPEI CITY GOVERNMENT
JUNE, 2006

Explanatory Notes

1. Publishing purpose: Key Taipei City Government statistical data has been selected, analyzed and published, in Taipei City Profile, for easy reference.
2. Since Taipei City was upgraded to a municipality, on July 1, 1967, and since its boundary expanded in 1968, statistical summaries were published irregularly. To meet growing demands, basic statistical data, on general conditions in Taipei City, are now compiled annually in order to help readers understand the accomplishments achieved since the municipal administration was reformed.
3. The publication is divided into 42 sections. Each section contains statistical tables as well as brief explanation, analysis, statistical charts and related photographs.
4. The publication states measured units in metric terms, and total figures are sometimes rounded-off.
5. Some statistics, in this publication, are listed by administrative City district. The original City refers to the administrative districts before municipal administrative reform, while the present City statistics include the districts of Neihu, Nangang, Wenshan, Shilin and Beitou, which were added after municipal administrative reform. The entire City represents 12 administrative districts.
6. The following symbols are used throughout the publication:
 - " - " means no figures.
 - " -- " means figures provided are meaningless.
 - "..." means figures not yet available.
 - " 0 " means figure is below half a unit.
7. All photographs used throughout the publication are provided by the Taipei City Council, the Taipei City Government Department of Information and other City Government Departments.



Content

1. The History of Taipei City	4
2. Area	6
3. Weather	7
4. Taipei City Council	8
5. Taipei City Government	10
6. Civil Service Personnel	12
7. Population Growth	14
8. Population Distribution	16
9. Labor and Employment	18
10. Urban Development Plans	20
11. Equalization of Land Rights	22
12. Public Finance	24
13. Taxation	26
14. Industrial and Commercial Activities	28
15. Factory Registration	30
16. CyberCity	32
17. Mass Communication	33
18. Construction of Markets	34
19. Water Supply	36
20. Vehicle Registration	38
21. City Bus Operation	40
22. Mass Rapid Transit	42
23. Municipal Parking Facilities	44
24. Housing	46
25. Roads	48
26. Flood Prevention Facilities	50
27. Parks and Green Fields	52
28. Building Management	54
29. Educational Development	56
30. Social Education	58
31. Social Relief	60
32. Social Welfare	62
33. Labor Welfare	64
34. Job Placement Services	65
35. Medical Facilities	66
36. Medical Personnel	68
37. Drug Management	69
38. Environmental Protection	70
39. Police Affairs	72
40. Fire Fighting	74
41. Family Income and Expenditure	76
42. Price Index	78
Appendix	80

1. The History of Taipei City

Taipei City and its suburban districts are situated on a typical basin of the fourth series new stratum, according to geological assertions. In ancient times, the area was a large lake and land was later formed after several million years of alluvial deposits.

The birth of Taipei Basin remains an unsolved mystery. Nevertheless, it is known that the Chinese began massive immigration to Taiwan during the Ming Dynasty.

In 1661, Zheng Cheng-gong expelled the Dutch and recovered Taiwan. He sent Huang An, his brave bodyguard and the head of the naval and army combined force, to guard Danshui. When Zheng Ke-shuang, Zheng Cheng-gong's son, took charge of Taiwan, he instituted the system of stationing the army in farming areas. He sent forces to Three Forts at Zhilan, along the Danshui River, to cultivate land. A stone tablet, from that time, provides proof of this.

In 1683, forces from the mainland were sent to Taiwan and the number of immigrants, from the coastal region of Fuchien, increased accordingly. In the fall of 1709, Chen Lai-zhang, a joint-stock body corporate, was officially granted a settlement permit by the Zhuluo County of Taiwan Fu. Following in his steps, residents in the two counties of Zhang and Quan crossed the strait with their families to settle in the area from Xinzhuang to Bangka (or Wanhua, as it is known today). They built towns and cities, turning the area into a Shangri-La.

In 1737, the settlement expanded to Quanshan (or Wenshan, today), Xikou (or Songshan, today), Upper Beitou, Lower Beitou, Tatayou, Xiaogangzai and Dalangliu. As a river port, Bangka became a cargo center in the Taipei Basin and gradually developed into a prosperous town.

After 1853, Bangka's prosperity continued. Large ships continually plied the waterways and there was always bustling activity on land. Therefore, there was a saying at the time, "First Tainan Fu (the capital then), Second Lugang, and Third Bangka." Subsequently, some of the immigrants from Zhang County moved from Bangka to Dadaocheng and engaged in construction and business activities. Before long, Dadaocheng grew to an extent that it replaced Bangka as the only international port in Taipei.

In 1875, the Qing Dynasty Emperor set up Taipei Fu (literally, province) at Dajiana Port (or Zhongzheng District, today). In 1884, the surrounding city walls were completed. In 1885, three streets, Shifang (or Hengyang Road, today); Ximen (or the lower end of Hengyang Road, today); and Xinqi (or Boai Road, today), were built. Since then, the inner city, Dadaocheng, and Bangka were linked together to form a greater city.

After the Sino-Japanese War of 1894, the Japanese occupied Taiwan and abolished Taipei Fu for Taipei Xian (or County), and later changed the name to Taipei Zhou. The total area comprised 18.65 square kilometers, which included the three districts: Bangka, Dadaocheng and Dajiana Port, known as Taipei Department. The population in the entire jurisdiction was divided into 155 settlements.

In May 1897, the Taipei Planning Commission was created to develop Taipei city. However, Taipei was not officially established as a county municipality until October 1920, at which time subsequent urban planning was implemented. In 1932, the range of the city was expanded by 66.98 square kilometers and the population increased from 150,000, as was originally planned, to 600,000.

Upon the Restoration of Taiwan, in August 1945, the provincial system was restored and it was promulgated that Taipei officially became a provincial municipality. In October, the central government took over the city and divided the city into ten administrative districts based on the existing boundaries.

In December 1966, given that Taipei had become the political, military, cultural, economic, and financial center of Taiwan, the central government decided that Taipei should be upgraded to a special municipality and the upgrade should take effect on July 1, 1967. To meet the need for urban construction and development, six towns - Neihu, Nangang, Muzha, Jingmei, Shilin, and Beitou - were included in the city's boundary, on July 1, 1968, which increased the area of the city by 272 square kilometers and the population by 1.56 million. Given the heterogeneous geographic features, the different levels of development and establishment, and the disparity in land area and population sizes, the old administrative district system could not perform the functions it purported to undertake. As such, as of March 12, 1990, the entire city was demarcated into 12 administrative districts, including Songshan, Xinyi, Daan, Zhongshan, Zhongzheng, Datong, Wanhua, Wenshan, Nangang, Neihu, Shilin and Beitou. By the end of 2005, the population of the entire city increased to 2,616,375.

In order to turn Taipei City into a world-class capital and a bright, energetic, and healthy city that is most suitable for living, "Healthy Taipei" has been the objective of our municipal focus over the past years. In terms of a safe city, we focus on public security and the safety of transportation and labor force. In terms of an ecological city, we enforce the policy of "per bag garbage collection fee", enhance the quality of tap water, and increase the sewer pipe-connection rate. In terms of a prosperous city, we establish Taipei Technology Corridor (TTC) and actively promote new business opportunities. In terms of a friendly city, we promote harmony among ethnic groups, value human rights, and hold foreign worker poetry exhibitions. In terms of a joyful city, we conduct different welfare measures and protect minority groups. In terms of a cultural city, we focus on protecting cultural heritage and cultural innovation, and promote traditional cultural and artistic activities. In terms of a convenient city, our MRT network has already taken shape, and we continue to open dedicated lanes for buses and bicycles and establish wireless broadband Internet. In terms of a healthy city, we establish community health care networks to achieve a Taipei City that is healthy and full of life. In terms of a vigorous city, we hold different kinds of physical activities and establish heated swimming pool facilities and community health centers. In terms of a sustained city, we construct green-space parks and hiking routes. In the future, Taipei City Government will continue making the citizens healthier in order to build Taipei as a sustainable healthy City.

2. Area

In August 1992, owing to the adjustment of demarcation line between Taiwan Province and Taipei City in Neigou and Dakeng River, the area of Taipei City increased 2.56 hectares of that in 1991. At present, Taipei City occupies 27,179.97 hectares (equivalent to 271.7997 square kilometers) accounting for 0.75% of the entire Taiwan area.

Before the reorganization, the City covered an area of 6,698 hectares, equivalent to a quarter of the present City area. In July 1968, the scope of the City was expanded to include six nearby towns and townships: Neihu, Nangang, Muzha, Jingmei, Shilin and Beitou, covering the area of 20,516 hectares; therefore, the total area was expanded to 27,214 hectares. After consecutive minor adjustments in 1983, 1986 and 1992, the City demarcation line now covers 27,179.97 hectares.

Until the end of 2005, the registered land covered an area of 25,970 hectares, occupying 95.5% of the entire City. Of the registered land, 13,423 hectares or 51.7 % were public land (including 1,012 hectares of land jointly owned by the government and the private sector); 12,548 hectares or 48.3% were private land.

Land in Use in Taipei City

Unit : hectare

End of Year & District	Grand Total	Registered Land			Unregistered Land
		Total	Public ①	Private	
1968	27,214	22,098	5,478	16,620	5,117
2004	27,180	① 25,948	① 13,324	① 12,624	① 1,232
2005	27,180	25,970	13,423	12,548	1,210
Songshan	929	858	568	290	71
Xinyi	1,121	1,119	591	528	2
Daan	1,136	1,135	724	410	2
Zhongshan	1,368	1,300	838	461	69
Zhongzheng	761	715	503	212	46
Datong	568	410	222	188	158
Wanhua	885	577	370	207	308
Wenshan	3,151	3,059	1,527	1,532	91
Nangang	2,184	2,158	1,021	1,137	26
Neihu	3,158	3,157	1,082	2,075	1
Shilin	6,237	5,881	2,778	3,104	356
Beitou	5,682	5,603	3,198	2,404	79

Note : ①Including land owned by the government and the private sector.

Source : Department of Land.

3. Weather

Climate changes within a certain range and fluctuates in concert with laws of nature. Weather favorability, temperature and rainfall that may lead to floods or draughts in unsatisfactory conditions are closely related to our daily lives. As Taipei City is located in the subtropical region, the weather tends to be cold and damp in winter as a result of cold fronts from the Asia Continent and the northeast monsoon. There is spring rain from March to April and plum rain from May to June. In this period, it tends to be drizzling type of weather. As the atmospheric circulation in East Asia turns to the summer type, thunderstorms and typhoons follow under the effect of air masses from the ocean and the southwest monsoon.

According to the meteorological statistics for last 109 years, the annual average temperature was 22.0 °C, annual average rainfall was about 2,167.1 mm., and annual average of rainy days was 181. In 2005, The annual average temperature was 23.3 °C, annual average rainfall was about 3,027.8 mm., and annual average of rainy days was 172. The statistics for 2005 showed that it was hotter during June to September than others of the year with precipitation 1,504.7 mm. (50% of the annual total), the average temperature 29.0 °C and sunshine duration 628.6 hours (49% of the annual total).

Since Taiwan is located in the monsoon climate region, Taipei City is also affected by monsoons. The monsoon mostly comes stronger from the east in winter and weaker from the south in summer as a result of the terrains. The fact that typhoons frequent Taiwan from July to October has a great impact on the City. Heavy rainfall resulted from the abundance of moisture carried by typhoons leads to drastic increase in precipitation, which can easily bring floods to areas at lower level. Hence, rigorous prevention measures are required in the typhoon season in order to minimize damages inflicted by natural disasters.

Overview of Weather in Taipei City

Month	Average Temperature (°C)		Average Relative Humidity (%)		Daylight (hr.)		Rainfall (mm.)		Number of Days with Rainfall ≥ 0.1 mm.	
	2005	1897 to 2005	2005	1897 to 2005	2005	1897 to 2005	2005	1897 to 2005	2005	1897 to 2005
Annual Average	23.3	22.0	76	81	1,396.7	1,546.4	3,027.8	2,167.1	172	181
January	15.5	15.3	81	83	45.1	85.1	71.0	90.6	13	16
February	16.2	15.2	87	83	45.4	74.8	299.8	143.9	18	16
March	17.3	17.5	73	83	130.1	89.3	268.5	172.6	15	17
April	23.0	21.1	74	82	107.6	106.6	72.4	164.7	13	15
May	26.2	24.5	80	81	92.3	126.3	531.0	224.4	16	16
June	28.2	26.8	76	81	100.0	146.4	278.9	299.8	16	16
July	29.8	28.5	74	77	189.3	207.7	293.1	241.9	12	14
August	29.3	28.3	76	78	153.2	207.9	666.2	289.1	19	14
September	28.8	26.7	71	79	240.1	175.9	266.5	268.9	8	14
October	25.0	23.4	75	80	108.3	134.6	201.0	125.5	20	15
November	23.2	20.4	73	80	119.8	102.6	28.7	72.1	7	15
December	16.6	17.1	75	82	65.5	89.4	50.7	74.6	15	16

Source : Central Weather Bureau.

4. Taipei City Council

Taipei City Government was founded when Taiwan was restored in 1945, and the Taipei Senate was founded in the following year. Local self-governance was enforced in 1950, and mayors were being elected by the citizens and provincial municipal council were also established. After six re-elections, Taipei City was restructured into a municipality directly under the jurisdiction of the Central Government in 1967, and mayors were directly appointed by the premier. In July 1994, the Municipal Self-governance Act was put to practice, and the seventh councilor and mayor election was held on December 3rd of the same year, thus marking a new page in the history of democracy. The eighth councilors and mayor election was held on December 5th, 1998, and Local Government Act was announced and put into effect on January 25th, 1999, making Taipei City Council the highest local legislative body. The ninth councilor and mayor election was held on December 7th, 2002, in which 52 city councilors were elected. Because that some of them were transferred to legislators, there were 49 city councilors at the end of 2005.

Taipei City Council's duties and powers are to examine and resolve municipal laws, to deliberate the annual budget and audit disbursement reports of the City Government, to approve levy of special taxes, provisional taxes, and surtaxes in Taipei, to deliberate disposals of the municipal assets, to deliberate the special municipality's organizational autonomy statutes and bylaws and those of its subordinate agencies, to approve proposals made by the City Government and councilors, to deal with the citizens' petitions, to carry out other functions according to the law. The staff of the secretariat of Taipei City Council includes: 1 secretary general who follows the orders of the speaker, coordinates council affairs, and commands his/her subordinates; 1 deputy secretary general who assists the secretary general; other offices include administrative units such as secretarial office, procedure section, general affairs section, documents section, public relations office, legal affairs office, information office, personnel office, and accounting office, and permanent and special committee offices such as civil affairs, finance and construction, education, transportation, police and sanitation, public works, legislation, procedure, and discipline.

Councilors Election of Taipei City

Terms	No. of Voters	No. of Ballots	% of Ballots to Voters	No. of Candidates	No. of Nominees Elected			Inauguration Date		
					Total	Male	Female	Year	Month	Day
1 st Term	874,185	559,191	63.97	77	48	41	7	1969	12	25
2 nd Term	1,023,809	620,070	60.57	63	49	42	7	1973	12	25
3 rd Term	1,175,477	830,454	70.65	61	51	43	8	1977	12	25
4 th Term	1,314,260	892,257	67.89	83	51	44	7	1981	12	25
5 th Term	1,538,774	1,008,314	65.53	74	51	42	9	1985	12	25
6 th Term	1,753,905	1,215,198	69.29	100	51	41	10	1989	12	25
7 th Term	1,811,825	1,422,920	78.54	145	52	40	12	1994	12	25
8 th Term	1,864,319	1,507,844	80.88	110	52	35	17	1998	12	25
9 th Term	1,943,250	1,376,488	70.83	113	52	35	17	2002	12	25

Source : Municipal Election Commission of Taipei.

5. Taipei City Government

The purpose of reorganizing Taipei City is to construct it as a modernized city. Therefore, the administrative organization and staffing of the City Government has been aligned to this purpose. Since the reorganization, the City Government has been adjusted for several occasions to meet the requirement of the City's development. At present, according to the "Law of Special Municipality Autonomy", the City Government, headed by a mayor and two deputy mayors, operates with the following departments: Department of Civil Affairs; Department of Finance; Department of Education; Department of Economic Development; Public Works Department; Department of Urban Development; Department of Labor; Department of Transportation; Department of Health; Department of Social Welfare; Department of Environmental Protection; Fire Department; Department of Cultural Affairs; Taipei City Police Department; Department of Land; Department of Compulsory Military Service; Department of Personnel; Department of Information; Department of Budget, Accounting and Statistics; The Secretariat; Department of Government Ethics. Further, there are six Committees for handling specific affairs, Department of Rapid Transit Systems, Taipei Rapid Transit Co., Taipei Feitsui Reservoir Administration, Taipei Public Service Institute, Taipei Water Department and 12 district offices.

By the end of 2005, Taipei City Government had 414 agencies and units in total, including the aforementioned 32 primary agencies, 12 district offices and 370 secondary agencies subordinated to primary agencies. By character of agencies, these were divided into 169 general administrative agencies (including medical services), 4 business units and 241 schools at all levels.

According to the "Law of Special Municipality Autonomy", the City shall be divided into districts while each district divided into Lis and each Li divided into Lins. With the territory expanded after the reorganization, the City was divided into 16 districts and the number of Li and Lin was adjusted by means of the increase of households. By the end of 1968, the City totally had 608 Lis and 10,255 Lins. To consolidate the organization at the bottom level and enhance the administrative function of districts and Lis, the City was re-divided into 12 districts since March 12, 1990. By the end of 2005, there were 449 Lis and 9,461 Lins with approximately 21 Lins per Li and 99 households per Lin in the City.

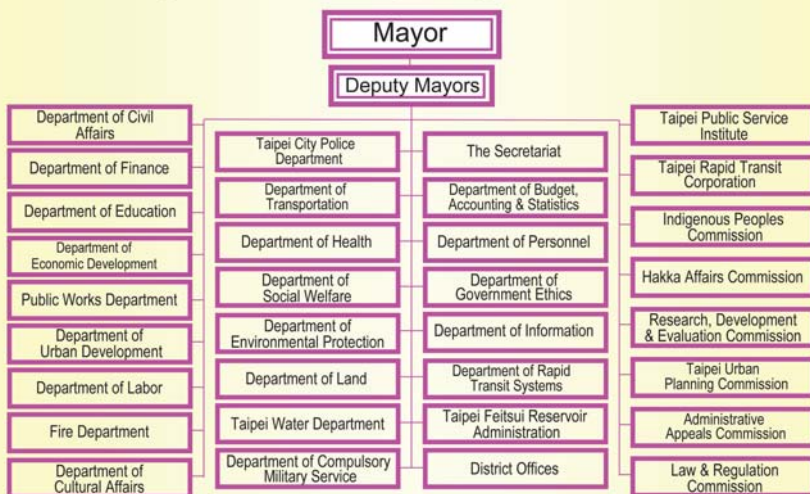
Neighborhoods and Households of Taipei City

End of Year and District	Lis ①	Lins ①	Households
1968	608	10,255	350,821
1990	440	9,715	805,978
2003	449	9,455	914,716
2004	449	9,455	923,325
2005	449	9,461	933,110
Songshan	33	756	75,009
Xinyi	41	913	84,605
Daan	53	1,027	113,108
Zhongshan	42	864	85,446
Zhongzheng	31	584	59,060
Datong	25	516	44,909
Wanhua	36	718	71,774
Wenshan	39	993	92,078
Nangang	19	429	38,589
Neihu	37	859	88,663
Shilin	51	985	95,875
Beitou	42	817	83,994

Note : ① Each district is divided into Lis while each Li is divided into Lins.

Source : Department of Civil Affairs.

Organization of Taipei City Government



Taipei City Government



6. Civil Service Personnel

In order to meet the requirements for civil construction, the number of personnel in Taipei City Government and subsidiaries has been examined and revised by means of the official functions' changes, so as to control the personnel growth efficiently in recent years. The City Government pays considerable attention to on-the-job training undertaken by the Taipei Public Service Institute. In addition, employees with good performance records will be selected for advanced study at colleges or universities domestically or abroad, achieving the goal of cultivating talents for various municipal programs. By the end of 2005, the number of civil servants was 72,388, the number of staff in the organic structure was 52,978, the number of workers in the organic structure was 16,283, and the number of personnel out of management was 3,127.

By character of agency, the number of staff in the organic structure with municipal schools totaled 51.18% topping the list, administrative agencies 45.14% scored, the second and municipal enterprises 3.68% were the least. Compared with 2004, there were 23,915 employees working for administrative agencies, a decrease of 1,030; 1,949 for municipal enterprises, a decrease of 1; and 27,114 for municipal schools, a decrease of 634.

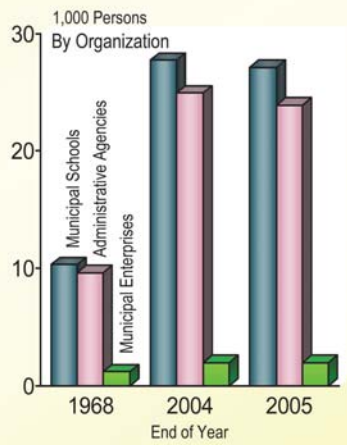
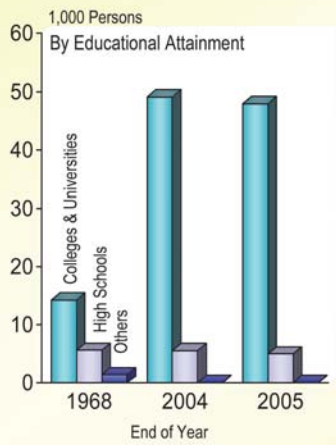
By educational attainment, the number of staff in the organic structure with college education or higher added up to 47,948, occupying 90.50 % of the City Government's work force by the end of 2005. By working years, most of the employees had worked for 10 to 14 years, about 23.93% of the total. By sex, there were 30,288 female employees, about 57.17% of the total, and 22,690 male employees, about 42.83%.

Number of Staff in the Organic Structure of Taipei City Government and Subsidiaries

Item	Employees (person)			%		
	End of 2005 (1)	End of 2004 (2)	Change (1)-(2)	End of 2005 (3)	End of 2004 (4)	Change (3)-(4)
Total	52,978	54,643	-1,665	100.00	100.00	-
1. By Character of Agency						
Administrative Agencies	23,915	24,945	-1,030	45.14	45.65	-0.51
Municipal Enterprises	1,949	1,950	-1	3.68	3.57	0.11
Municipal Schools	27,114	27,748	-634	51.18	50.78	0.40
2. By Education						
Colleges and Universities	47,948	49,064	-1,116	90.50	89.79	0.71
High Schools	4,967	5,517	-550	9.38	10.10	-0.72
Others	63	62	1	0.12	0.11	0.01
3. By Working Years						
5 years and under	10,181	10,271	-90	19.22	18.80	0.42
6~ 9 years	9,329	10,021	-692	17.61	18.34	-0.73
10~14 years	12,675	13,105	-430	23.93	23.98	-0.05
15~19 years	12,092	12,504	-412	22.82	22.88	-0.06
20~24 years	5,588	5,867	-279	10.55	10.74	-0.19
25~29 years	2,028	1,842	186	3.83	3.37	0.46
30 years and over	1,085	1,033	52	2.05	1.89	0.16

Source : Department of Personnel.

Number of Staff in the Organic Structure of Taipei City Government and Subsidiaries



Household Registration Service



7. Population Growth

Taipei City had initially a population of 1.6 million amounted to 350,821 households after the reorganization in 1968. By the end of 2005, the number of households had increased to 933,110 and the population to 2.62 million. In the past 37 years, the population had increased 63% while the number of households had increased 1.7- folds.

The City expanded rapidly in its constructions and the urban population grew drastically right after the reorganization. From 1968 to 1972, the annual average increase of the population was about 76,000. From 1973 to 1979, the population grew at the rate of 30,000 to 40,000 per annum. In 1980, the population growth slowed down at the rate of merely 24,000. From 1981 to 1987, the annual increase was between 50,000 to 60,000. From 1988 to 1990, the increase started to decline. In 1991, the population showed a negative growth for the first time. In the following 15 years, the population growth fluctuated between negative 43,000 and positive 43,000 persons. In 2005, the population decreased 6,000 persons or so.

The factors affecting population fluctuation are divided into two aspects - natural increase (birth, death) and social increase (immigrant, emigrant). Since the reorganization, natural increase of the City population has remained stable. It remained over 30,000 for 1968 to 1984, between 20,000 to 30,000 for 1985 to 1997, dropped to 20,000 since 1998 and merely 6,000 in 2005. On the other hand, social increase fluctuated significantly due to complex variable factors. Emigrants had outnumbered immigrants ever since 1989, except 1998, when the emigrant boom was lessened and made the number of social increase negative. By observing the increase of the total population, it tended to be a positive growth before 1990. Since 1991, the negative growth of social increase outweighed that of natural increase, leading to the negative growth of the total population for all the years except for 1994, 1998, 1999, 2000 and 2002.

Population of Taipei City ①

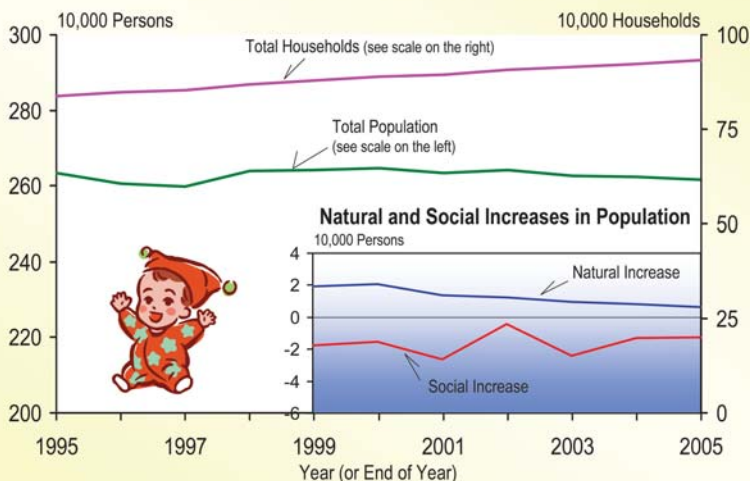
Year	Households ②	De-facto② Population	Population Growth (person)		
			Total Increase	Natural Increase	Social Increase
1968	350,821	1,604,543	78,976	34,452	44,524
1971	393,207	1,839,641	70,073	36,773	33,300
1981	584,668	2,270,983	50,556	35,471	15,085
1986	701,509	2,575,180	67,560	26,324	41,236
1991	816,734	2,717,992	-1,667	25,924	-27,591
1996	847,354	2,605,374	-27,489	21,930	-49,419
2001	894,763	2,633,802	-12,672	13,661	-26,333
2004	923,325	2,622,472	-4,666	8,138	-12,804
2005	933,110	2,616,375	-6,097	6,446	-12,543

Notes : ①The information in the table is based on registered domiciles and excludes expatriates and recurrent population.

②Year-end data.

Source : Department of Civil Affairs.

Population Growth in Taipei City



Causes for Change in Population of Taipei City ①

Year	Birth		Death		Immigrants (person) ②	Emigrants (person) ②
	Number of Births	Gross Birth Rate(‰)	Number of Deaths	Gross Death Rate(‰)		
1968	40,923	26.15	6,471	4.13	244,279	199,755
1971	43,542	24.13	6,769	3.75	277,881	244,581
1981	44,019	19.60	8,548	3.81	311,249	296,164
1986	35,542	13.99	9,218	3.63	514,729	473,493
1991	36,538	13.44	10,614	3.90	355,300	382,891
1996	34,151	13.04	12,221	4.67	347,031	396,450
2001	26,998	10.23	13,337	5.05	246,335	272,668
2004	22,154	8.44	14,016	5.34	253,830	266,634
2005	20,962	8.00	14,516	5.54	261,172	273,715

Notes : ①The table is based on household registration excluding aliens and migratory population.

②Since 1986, the immigrants and emigrants have included those having the address changed in the same administrative district.

Source : Department of Civil Affairs.

8. Population Distribution

The population of Taipei City shows a rapid increase in the new City area but a relative stagnation in the old City area for two reasons. When the reorganization of the City administration took place, the old City area was already saturated with population. Since then, various city development programs have contributed to the prosperity of the suburban areas where population increases dramatically. When the City was expanded on July 1, 1968, the population was over 200,000 each for Zhongshan and Daan, 100,000 each for Guting, Songshan, Shuangyuan, Datong and Shilin, and merely 30,000 each for Jingmei and Muzha. By the end of 1989, the population exceeded 450,000 for Songshan and achieved 330,000 for Daan. That also exceeded 200,000 each for Shilin, Zhongshan, Beitou and remained less than 50,000 each for Jiancheng, Yanping, and Longshan where the area of each was relatively small. Given to unevenly population distribution and differentiated developments per district, the City was readjusted into twelve administrative districts on March 12, 1990 in an effort to consolidate the administrative organization at basic level.

By the end of 2005, the population was between 200,000 to 300,000 for all the districts except for Daan (over 300,000); Nangang, Datong, Zhongzheng and Wanhua (less than

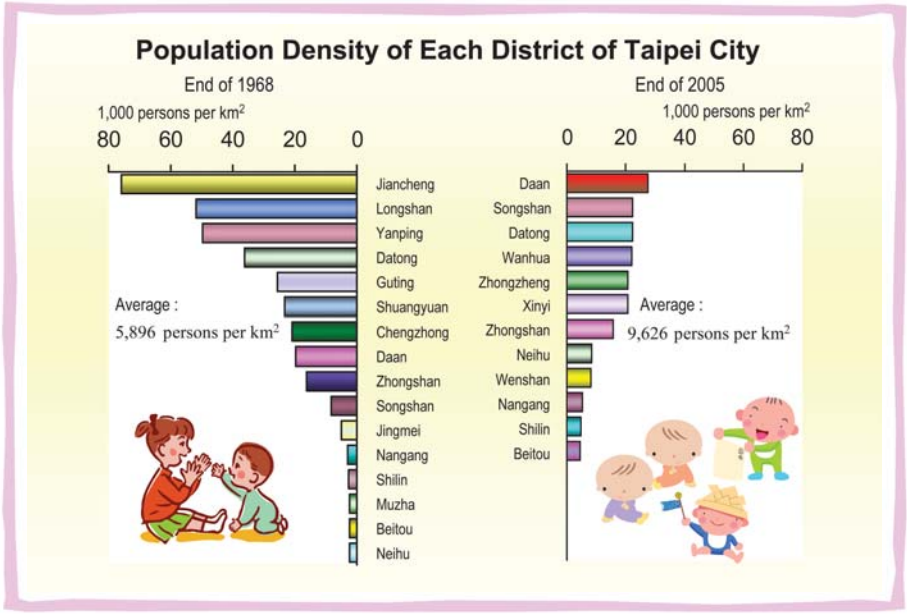
Change in Population of Each District in Taipei City^①

District	End of 2005 (1)	End of 2004 (2)	Change (1) - (2)	District	July 1, 1968 (when expanding the area of the City)	March 11, 1990 (before reorganization of the City)
Total	2,616,375	2,622,472	-6,097	Total	1,560,088	2,703,858
Songshan	208,101	205,962	2,139	Songshan	165,988	454,711
Xinyi	230,780	232,506	-1,726	Daan	200,480	334,616
Daan	312,166	312,554	-388	Guting	166,860	186,017
Zhongshan	216,906	216,868	38	Shuangyuan	119,412	135,220
				Longshan	72,261	47,599
				Chengzhong	78,710	54,842
Zhongzheng	157,335	158,486	-1,151	Jiancheng	58,438	30,462
Datong	126,810	128,512	-1,702	Yanping	60,426	34,983
Wanhua	194,743	197,445	-2,702	Datong	113,895	86,062
Wenshan	258,953	258,046	907	Zhongshan	212,675	273,107
				Neihu	37,414	199,024
				Nangang	41,038	115,640
Nangang	113,052	112,982	70	Muzha	31,334	99,147
Neihu	261,837	261,201	636	Jingmei	30,526	123,563
Shilin	287,753	288,921	-1,168	Shilin	102,340	289,546
Beitou	247,939	248,989	-1,050	Beitou	68,291	239,319

Note : ^①The table is based on household registration excluding expatriates and recurrent population.
Source : Department of Civil Affairs.

200,000 for each). Thus, not only land area and population are properly distributed to each district, but also the overall development and use utilities can be achieved to meet the needs of the City development in future.

By the end of 2005, the population density of the City was 9,626 per km². Due to geographical conditions and differences in the extent of development, Daan was the most densely populated with a density of 27,476 per km² among all the districts. The density also exceeded 20,000 for each of Songshan, Datong, Wanhua, Zhongzheng, and Xinyi while less than 6,000 for each of Beitou, Shilin, and Nangang. Beitou and Shilin also had the lowest density of less than 5,000 per km² due to their relatively large area. Analyzing on the population growth of the districts, all the districts showed a negative growth of population except Songshan, Wenshan, Neihu, Nangang and Zhongshan. Among the districts experiencing a positive growth, Songshan topped the rest with 1.04% followed by Wenshan 0.35% and Neihu 0.24%. On the contrary, the population of Wanhua decreased most with 1.37% followed by Datong 1.32%, Xinyi 0.74% and Zhongzheng 0.73%.



9. Labor and Employment

Labor force, including the employed and the unemployed, refers to the population aged 15 and over having work capability or intention. The employed refer to those engaging in paid jobs or unpaid housework for 15 hours or more during the benchmark week of the survey while the unemployed refer to those seeking jobs or waiting for work without receiving any pay during the benchmark period. Following the population increase of Taipei City, its labor force increased from 491 thousand persons in 1969 to 1,181 thousand in 2005 showing that the growth of labor force was 1.4 times over the 36 years. During the same period, the increase of population aged 15 or over was 1.2-folds and the labor participation rate remained over 50% except in 1971, 1972, 1975 and 1976. In 2005, the rate achieved 55.5%.

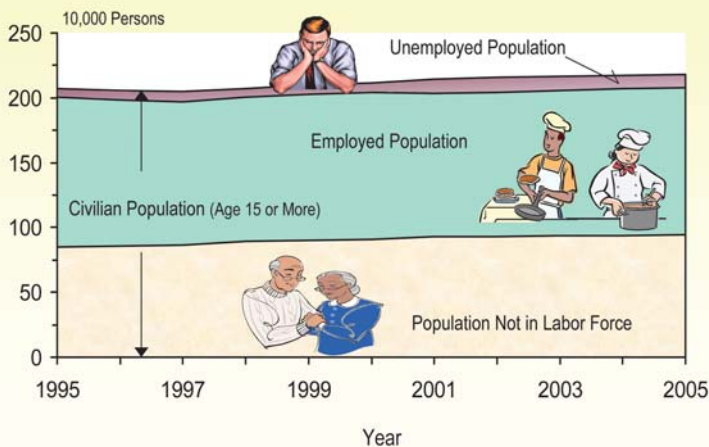
The employment rate of Taipei City has been over 95% since 1969. During the period, the rate fell to 95.5% in 1975 when the first world oil crisis sent the economy to a recession. Later, the rate rebound to over 98% following the economic recovery from 1979 to 1981. Then again economic stagnation made the employment rate decline to 96.4% in 1985. In 1988 the economy showed an upturn and the employment rate stayed over 98% until 1994 while it fell again to 97.9% in 1995. Due to the worldwide economic recession, it went down to the lowest in 2001, 2002. Even though the economy recovered in 2003, the employment rate stayed 96.1% in 2005.

Labor Force and Employed Population of Taipei City

Year	Labor Force (1,000 persons)			Labor Participation Rate (%)	Employment Rate (%)	Unemployment Rate (%)
	Total	Employed	Unemployed			
1969	491	475	16	51.0	96.7	3.3
1971	556	536	20	49.6	96.4	3.6
1981	790	778	12	52.1	98.4	1.6
1986	993	959	34	55.3	96.6	3.4
1991	1,126	1,104	22	56.3	98.0	2.0
1996	1,161	1,127	34	57.5	97.1	2.9
2001	1,155	1,110	46	55.5	96.1	3.9
2004	1,183	1,134	49	55.8	95.8	4.2
2005	1,181	1,135	46	55.5	96.1	3.9

Source : Monthly Bulletin of Manpower Statistics , Taiwan Area, Republic of China.

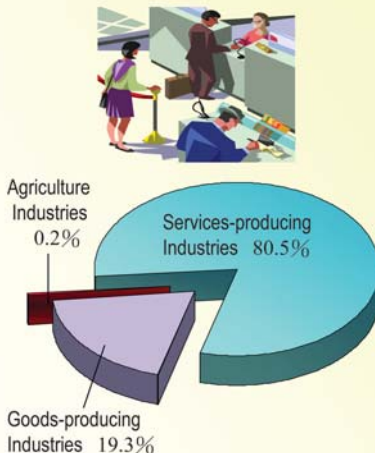
Labor Force and Employed Population of Taipei City



Most of the citizens engage in the services-producing industries (including trade, accommodation, transportation, finance and other services). The labor population in this category totaled 914 thousand in 2005, showing an increase of 0.2% compared to 912 thousand in 2004 and accounting for 80.5% of the total employed population. The population of those engaging in the goods-producing industries (including mining, manufacturing, electricity, gas & water and construction) totaled 219 thousand in 2005, the same as that in 2004 and standing at 19.3% of the total employed population. Only few engage in the agriculture industries (including agriculture, forestry, fishing and animal husbandry). This part of workers accounted for less than 0.5% of the total employment population since 1997. By employment status, the number of the employee was 906 thousand, standing at 79.8% of the total employed, that of employers and the self-employed 191 thousand at 16.8%, and that of unpaid household workers 38 thousand at 3.4% in 2005.

Structure of Employed Population by Industry

2005 Average :
1,135 Thousand Persons



10. Urban Development Plans

Urban development is a sustainable program while urban planning is a blueprint to guide the future municipal construction and development. Taipei City is Taiwan's economical center and responsible for leading Taiwan to participate in international competition and once again create miracles. Facing the trend of technology renovation, informationalization and internationalization, the Taipei City Government addresses the overall target of making Taipei a "prospectively joyful and ideal city to live in". The tangible strategies are formulated based on the perspective of our relationship with Mainland China, industrial attractiveness and international investment. Supplemented with convenient transportation, we will change Taipei's environmental nature and work with marketing strategies. This will promote Taipei City to the global stage, and make her an important part of the international community.

By the end of 2005, the urban development plans had an area of 27,180 hectares, covering the entire administrative districts. Flat land suitable for urban development accounted for 13,353 hectares or 49.1% of the City. Hills, slope land and low-lying land that were not suitable for urban development accounted for the remaining 13,827 hectares or 50.9% of the City.

Urban development land can be classified into various zones based on location, mode of use, socioeconomic structure and future trend of development. The largest was the land used for public facilities occupying 7,098 hectares or 26.1% of the City. The residential zone occupied 3,821 hectares or 14.1% of the City. The commercial zone had an area of 918 hectares while the industrial zone covered 452 hectares.

A large part of non-urban development land was the conservation zone occupying an area of 11,393 hectares or 41.9% of the City. The agricultural zone accounted for 652 hectares or 2.4% of the City while water covering zone occupied an area of 1,631 hectares or 6.0% of the City. The scenic zone accounted for 152 hectares.

Land Zoning of Taipei City Based on Urban Development Plan

End of 2005

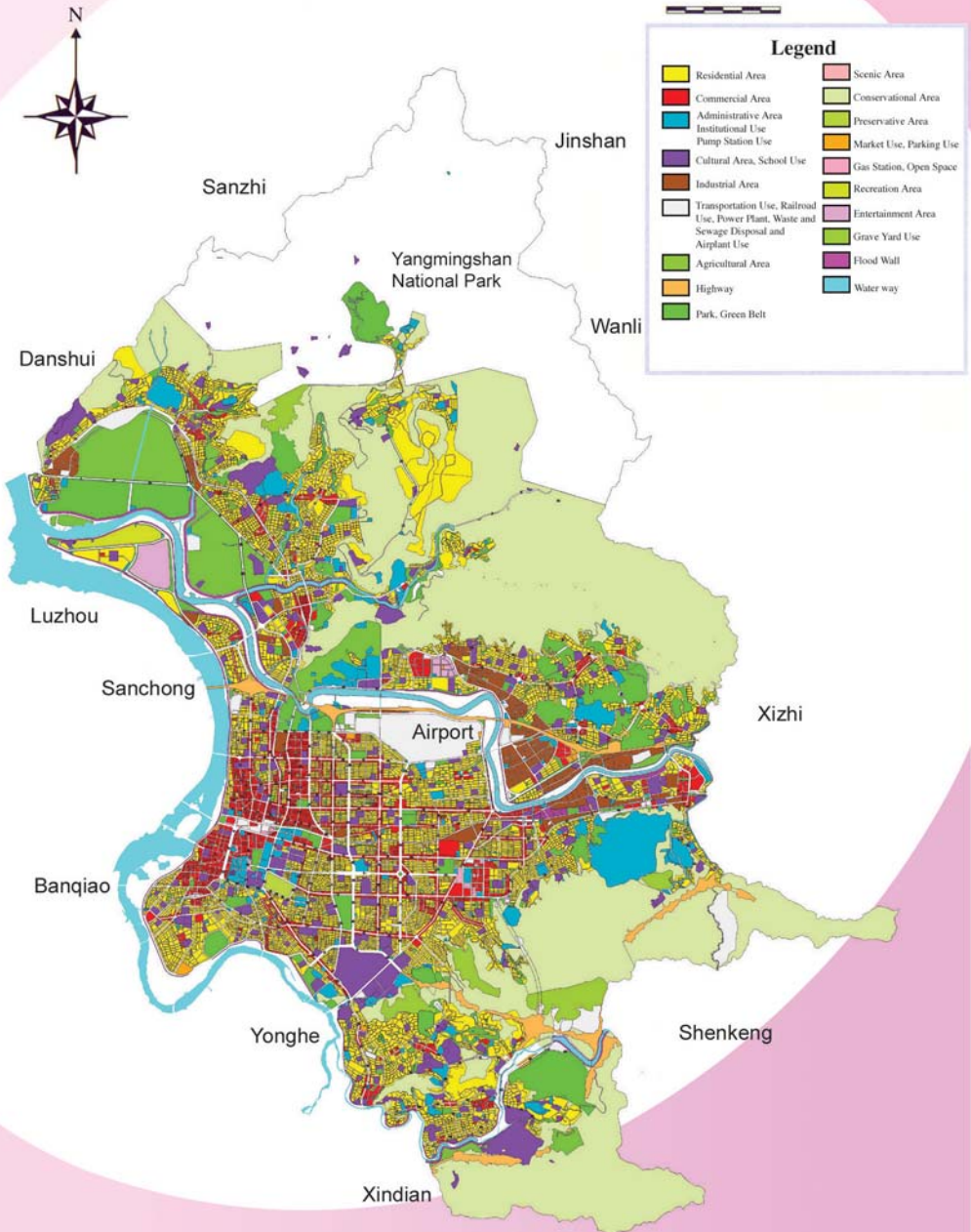
Unit : hectare

District	For Urban Development						Not for Urban Development			
	Total	Residential Zone	Industrial Zone	Commercial Zone	Public Facilities Zone	Others ①	Total	Agricultural & Scenic Zones	Conservation Zone	Water Covering Zone
Total	13,353	3,821	452	918	7,098	1,063	13,827	804	11,393	1,631
Songshan	825	180	1	46	207	391	104	2	-	102
Xinyi	1,039	285	21	82	581	69	82	-	82	-
Daan	1,093	335	-	117	599	41	43	3	32	8
Zhongshan	998	221	22	182	438	135	370	149	63	158
Zhongzheng	704	166	-	72	375	90	57	-	9	47
Datong	478	95	6	98	236	42	90	-	-	90
Wanhua	575	150	-	74	331	21	311	-	-	311
Wenshan	1,635	544	-	39	1,029	23	1,515	35	1,399	81
Nangang	972	145	108	42	585	92	1,212	16	1,165	31
Neihu	1,446	381	224	35	794	12	1,712	5	1,617	91
Shilin	1,897	842	24	79	836	115	4,340	13	3,783	544
Beitou	1,691	477	45	51	1,087	31	3,991	580	3,244	167

Note : ① Including Administrative zone, Cultural & Educational zone, zone for specific purposes, Airport, Recreation zone and others.

Source : Department of Urban Development.

ZOING MAP OF TAIPEI CITY BUREAU OF URBAN DEVELOPMENT



11. Equalization of Land Rights

The equalization of land rights is a fundamental national policy of our country. Its goal is to maximize land utilization and bring the public sharing the benefits thereof. The basic task for achieving the goal is regulating land value to control the movement of land value. So as to facilitate value-based taxation and land purchase as well as value increment to public.

Taipei City launched a program for equalization of land rights in 1956. Lands were officially valued by stage based on the Statute for Equalization of Land Rights. In 1964 another program was launched to continue the earlier one. In 1969 the Executive Yuan ordered an overall implementation of equalization of land rights commencing from December in that year. In the process, lands that had so far not been valued were under valuation all in one time. By the end of 1970, the City completed the valuation for a total of 22,077 hectares.

The Statute for Equalization of Land Rights requires that lands valued or revalued previously shall be subject to revaluation every three years. Accordingly, the City conducted a revaluation for a total of 22,077 and 22,174 hectares respectively in 1974 and 1978 respectively. Another revaluation was supposed to take place in 1982; however, the Executive Yuan gave an order to delay the job until the amendment to the Statute for Equalization of Land Rights was legalized. The amended Statute for Equalization of Land Rights was promulgated for enforcement on June 29, 1986. The deferred revaluation was re-instituted in 1987 with merely a total of 22,875 hectares revalued because the Ministry of the Interior required that newly registered lands without finalized entitlements were subject to be revalued after the entitlements were finalized. Land revaluation took place every three years since 1991 and covered a total of 26,099 hectares in 2004. Following the enforcement of the amended detailed rules in the Statute for Equalization of Land Rights in 1990, land value and current land value have been separated since 1991. The former serves as the basis for land tax collection while the latter serves as the basis for land value compensation and land value increment tax collection.

Land with Value Re-assessed under the Equalization of Land Rights Program (Abbreviated by ELRP) after the Upgrade of Taipei City to Municipality ①

Unit: hectare

Year	Total Land (1)	Land Covered By ELRP (2)	ELRP-Covered Land with Value Re-Assessed	ELRP-Covered Land as % of Total Land (2) ÷ (1) × 100
1968	27,214	8,166	5,678	30.01
1974	27,214	22,174	22,077	81.48
1978	27,214	24,622	22,174	90.48
1987	27,177	23,036	22,875	84.76
1991	27,177	24,865	24,726	91.49
1994	27,180	25,701	25,058	94.56
1997	27,180	26,097	25,802	96.02
2000	27,180	26,069	26,069	95.91
2004	27,180	25,921	26,099	95.37
2005	27,180	25,935	-	95.42
2006	27,180	25,937	-	95.43

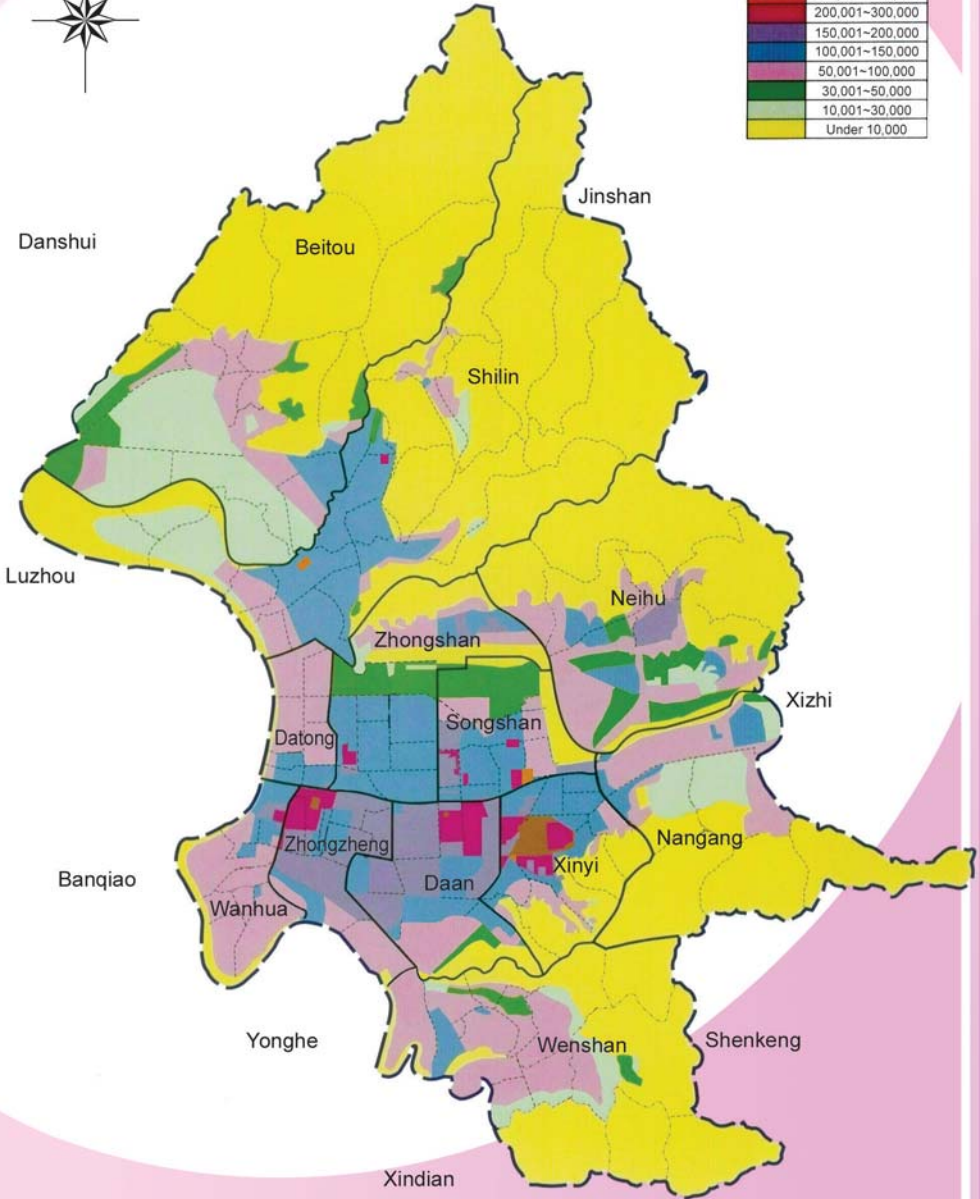
Note : ① From 2003 onward, current land value was promulgated on January 1 annually while land value was promulgated on January 1 in every three years since 2004.

Source : Department of Land.

DISTRIBUTION OF DISTRICT LAND PRICE IN TAIPEI CITY IN 2005



Unit:NT\$/Square Meter	
Over 500,000	Dark Red
300,001-500,000	Red
200,001-300,000	Dark Blue
150,001-200,000	Blue
100,001-150,000	Light Blue
50,001-100,000	Purple
30,001-50,000	Green
10,001-30,000	Light Green
Under 10,000	Yellow



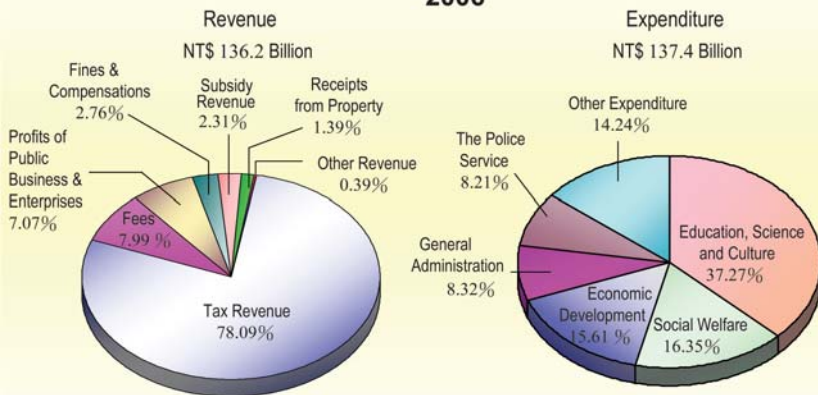
12. Public Finance

The general budget for Taipei Municipal Government is prepared by going with the goal of building Taipei City into a world-class capital. The estimation of revenues considers the actual collection of various revenues and trends of economic growth in the past. While that of expenditures considers the administrative objectives, the performance of budget execution and financial status of the City Government.

From the reorganization of the City, the revenue budget sustained increasing since FY1968 with the annual revenue of NT\$2.1 billion. The annual revenue for the latter half of 1999 and FY2000 recomputed as the one for a fiscal year was up to NT\$161.3 billion. Result from the economic depression and tax reduction by the Central Government's revising associated laws, the annual revenue showed negative growths since FY2001 and NT\$136.2 billion in FY2006. The expenditure budget sustained increasing since FY1968 with the annual expenditure of NT\$2.1 billion. The annual expenditure for the latter half of 1999 and FY2000 recomputed as the one for a fiscal year was up to NT\$174.6 billion. The annual expenditure showed negative growths since FY2001 and NT\$137.4 billion in FY2006. The deficit of the FY2006 revenue and expenditure budget was NT\$1.2 billion, added the expenditure for debt NT\$5.5 billion, the total of financing adjustment was NT\$6.7 billion. The financing adjustment included the balance of previous years NT\$1.8 billion and receipts from public debt NT\$4.9 billion.

The main source for the City revenue is tax revenue while the expenditure was mainly spent on education, science and culture. Of the FY2006 revenue, the tax revenue was NT\$106.4 billion or 78.09% of the total. While of the expenditure, the education-science-culture expenditure was NT\$51.2 billion or 37.27% of the total. Besides, the Taipei City Hospital, the Taipei Rapid Transit Co., and the Taipei Water Department etc. were prepared for subordinate agency budget, the Rapid Transit System development and the Taipei Dome Complex Construction Planning were prepared for special budget.

General Budget of Taipei Municipality 2006



Annual Budget of Taipei City after Upgrading to Municipality

Unit : NT\$1,000

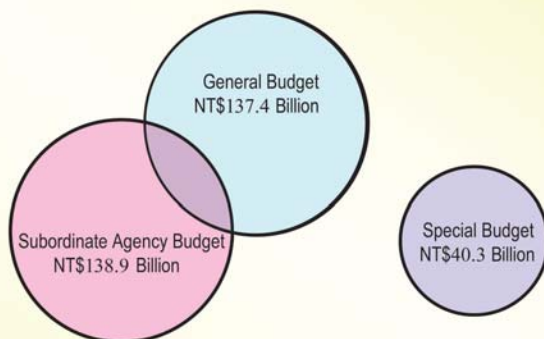
Fiscal Year	Revenue		Expenditure ^③	
	Budget ^①	Settlement	Budget ^①	Settlement
1968	2,115,629	2,192,085	2,115,629	2,021,344
1971	4,121,349	3,931,083	4,121,349	3,898,538
1981	36,695,740	34,689,516	36,695,740	34,689,516
1991	140,243,551	129,013,469	140,243,551	129,013,469
2001	147,031,984	126,620,935	158,934,682	149,746,224
2002	142,030,261	128,628,551	153,638,311	148,187,368
2004	127,053,064	145,869,178	136,115,088	130,593,404
2005 ^②	139,355,846	158,118,189	140,233,156	136,877,835
2006	136,236,254	...	137,445,766	...

Notes : ① Including budget additions and reductions for all fiscal years, except for FY2006.

② The settlement in this period did not pass auditing. ③ By means of the revision of the Budget Act, the fiscal year had been redefined as a year with months from Jan. to Dec. of the same year (the old definition was the one with months from July of a year to June of the next year) since July, 1999, and the budget for the latter half of 1999 and FY2000 should be prepared. Besides the annual revenue did not include "receipts from public" and "the balance of previous years" while the annual expenditure did not include "expenditure for debt" from then on.

Sources : Department of Budget, Accounting & Statistics and Taipei Ministry of Audit.

The Expenditure Budget of Taipei Municipality 2006



Notes: The 2006 general budget, the subordinate agency budget and special budget totaled NT\$316.6 billion. After appropriating NT\$56.0 billion to the subordinate agency budget (including education development funds, Taipei City Hospital medical funds etc.), the net budget was NT\$260.6 billion.

13. Taxation

Taxes are the major source of Taipei municipal revenues, accounting for over 70% of the annual revenue. Taxes collected in Taipei City fall into two categories: city taxes and national taxes. City taxes, levied by the Taipei Revenue Service, are transferred to Taipei City Treasury. National taxes are levied by the Taipei National Tax Administration, Ministry of Finance while the following parts will be also sent to Taipei City Treasury: 50% of the inheritance and gift tax levied in Taipei, the allocated amount of the 18% of the tobacco and wine tax based on the population ratio of all cities in the whole nation, the allocated amount of the business tax, commodity tax and income tax respectively based on the consolidation and redistribution of the associated tax by the central government.

In the 2005 fiscal year, the net income of city taxes totaled NT\$60.3 billion. Land tax, the most of city taxes, amounted to NT\$37.8 billion or 63% of the total net income of city taxes. The next two were house tax and vehicle license tax that were respectively NT\$9.9 billion or 16% and NT\$6.5 billion or 11%. All other taxes, such as deeds tax, stamp tax, amusement tax, and education expenditure, accounted for NT\$6.2 billion or 10% of the total.

In the same year, the net income of national taxes totaled NT\$391.5 billion, within which individual income tax, the most of all, accounted for NT\$159.1 billion or 41% of the total. Business income tax and futures transaction tax, the next two were NT\$153.9 billion or 39% and NT\$38.8 billion or 10% respectively. All others, including commodity tax, securities transaction tax, business tax, inheritance and gift tax, and fines for delayed tax payment, amounted to NT\$39.7 billion or 10% of the total.

Net Income of City Taxes and National Taxes Levied in Taipei City ①

Unit : NT\$ 1,000

Fiscal Year	City Taxes		National Taxes	
	Budget Amount	Net Income Levied	Budget Amount	Net Income Levied
1968	1,214,371	1,684,379	1,452,754	1,617,404
1971	3,384,955	3,514,078	3,877,606	4,256,545
1981	29,309,870	30,558,184	42,762,000	44,352,589
1986	54,521,691	54,526,665	49,271,950	47,111,383
1991	90,945,800	116,257,952	161,137,000	154,047,468
1996	161,229,609	147,288,612	259,316,393	265,981,878
2001	57,794,017	46,095,140	397,986,814	398,515,670
2004	45,014,640	57,860,878	324,704,465	309,392,244
2005	49,793,343	60,332,240	383,988,204	391,524,794

Note : ① Business tax has become national tax since July, 1999.

Sources : Taipei Revenue Service; Taipei National Tax Administration, Ministry of Finance.

Net Income of Major Taxes Levied in Taipei City①

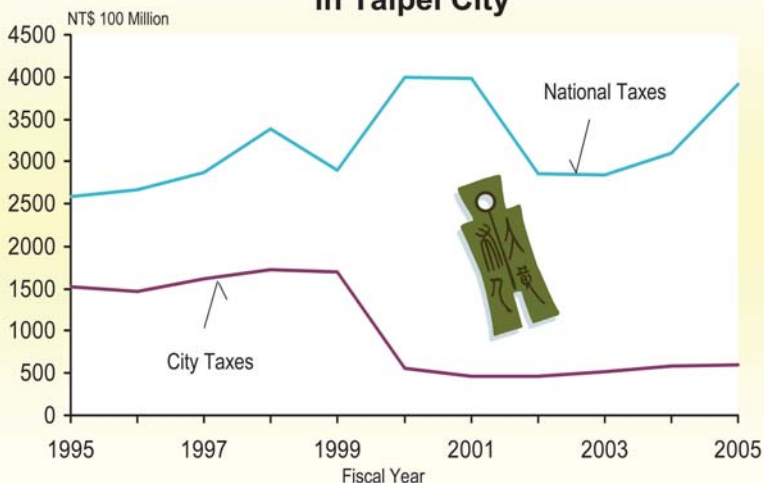
Unit : NT\$1,000

Item	FY2005		FY2004		FY1968	
	Amount	%	Amount	%	Amount	%
City Taxes	60,332,240	100.00	57,860,878	100.00	1,684,379	100.00
Business Tax	-	--	-	--	599,728	35.61
Land Tax	37,812,734	62.67	36,355,355	62.83	428,987	25.47
House Tax	9,890,207	16.39	9,393,066	16.23	190,671	11.32
Vehicle License Tax	6,471,516	10.73	6,344,755	10.97	68,607	4.07
Others	6,157,783	10.21	5,767,702	9.97	396,386	23.53
National Taxes	391,524,794	100.00	309,392,244	100.00	1,617,404	100.00
Individual Income Tax	159,078,389	40.63	117,828,297	38.08	382,614	23.65
Business Income Tax	153,857,397	39.30	112,061,091	36.22	667,958	41.30
Commodity Tax	130,891	0.03	52,850	0.02	179,866	11.12
Securities Transaction Tax	38,796,288	9.91	43,823,560	14.16	11,921	0.74
Futures Transaction Tax	5,818,929	1.49	7,395,655	2.39	-	--
Inheritance and Gift Tax	11,448,271	2.92	11,103,767	3.59	10,361	0.64
Business Tax	19,543,950	4.99	14,675,519	4.74	-	--
Others	2,850,679	0.73	2,451,505	0.80	364,684	22.55

Note : ① In the 2005 fiscal year, the settlement of taxes totaled NT\$118.5 billion, including city taxes NT\$60.5 billion, tobacco and wine tax NT\$1.1 billion, inheritance and gift tax NT\$2.5 billion, centrally allocated tax NT\$54.4 billion.

Sources : Taipei Revenue Service; Taipei National Tax Administration, Ministry of Finance.

Net Income of National Taxes and City Taxes in Taipei City



14. Industrial and Commercial Activities

Industrial and commercial organizations fall into two categories: firms (of proprietorship or partnership) and companies. Firms are registered according to the Commercial Registration Law while companies are registered according to the Company Law.

However, every profit-oriented enterprise has to be registered whether it is a firm or a company. The Guideline Governing Unified Issuance of Licenses for Profit-oriented Enterprises of Taipei City Government stipulates: "For any profit-oriented enterprise which has not been granted with approval for registration but has engaged in business activities and yet been raided should be recorded and taxed by the taxation agency... ". Consequently, the Taipei Revenue Service has set up records for all of those engaging business activities. The records, consisting of the number of business enterprises, their capital and sales, are comprehensive enough to show the actual status of the industrial and commercial activities in the City.

Industrial and commercial activities in Taipei City were so prosperous that the number of profit-oriented enterprises had reached 260,428 by the end of 2005, showing a rise of 5.9-folds over 37,950 by the end of 1968 or a rise of 11.19% over 234,215 by the end of 2004. By organization types, company and non-company organizations respectively accounted for 72% and 28% of total by the end of 2005. Compared with 31% and 69% as of the end of 1968, it indicated that those

Profit-Oriented Enterprises in Taipei City

End of Year	No. of Establishments			Capital		Sales ①	
	Total	Company	Non-Company	Total (NT\$million)	Average per Enterprise (NT\$1,000)	Total (NT\$million)	Average per Enterprise (NT\$1,000)
1968	37,950	11,596	26,354	31,552	831	103,219	2,720
1971	51,701	22,158	29,543	79,218	1,532	184,204	3,736
1981	134,780	84,915	49,865	571,059	4,237	1,788,499	14,531
1986	171,958	98,397	73,561	1,070,970	6,228	2,463,344	14,905
1991	214,634	130,917	83,717	2,308,649	10,756	4,852,524	26,497
1996	199,510	127,984	71,526	4,336,727	21,737	7,183,214	38,783
2001	208,919	135,477	73,442	8,363,749	40,033	8,749,928	45,495
2004	234,215	161,477	72,738	11,297,784	48,237	11,708,508	60,240
2005	260,428	186,833	73,595	13,399,339	51,451	13,126,304	66,760

Note : ① The figures are calculated for the whole year : $Average\ Sales\ per\ Enterprise = Total\ Sales \div Mid-term\ Actual\ Establishments.$

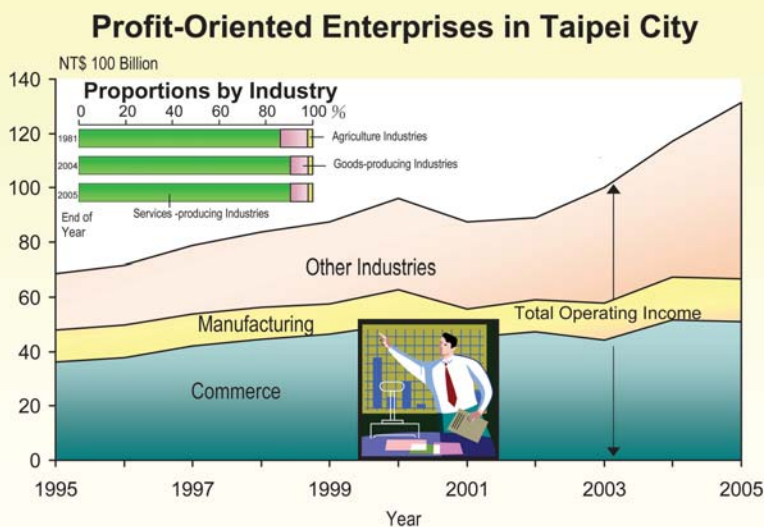
Source : Taipei Revenue Service.

small-scale business firms in the form of proprietorship or partnership was diminishing while large-scale companies were growing yearly. Majority of business enterprises in the City belonged to the services-producing industries (trade, transportation, finance and other services, etc.), accounting for 92% of total. The trade industry, alone occupied 71% of total business enterprises, was the most.

As of the end of 2005, the capital of all profit-oriented enterprises in the City amounted to NT\$13,399.3 billion showing increases of 424-folds and of 18.60% over those of 1968 and 2004, respectively. The average capital per enterprise reached NT\$51.45 million by the end of 2005, NT\$3.21 million more than that by the end of 2004.

Total sales in the City amounted to NT\$13,126.3 billion in 2005, showing a growth of 126-folds over that of 1968 or a growth of 12.11% over that of 2004. The services-producing industries accounted for 82% of the total sales. The average annual sales per enterprise reached NT\$66.76 million in 2005.

Taipei City, where the Central Government is located, plays a leading role in industrial and commercial circles. However, both percentages of business enterprise numbers and the sales amount in Taipei relative to those in the Taiwan area declined in the last few years. The former was 22% in 1991 and went down to 17% in 2005, while the later was 40% in 1991 and fell to 38% in 2005.



15. Factory Registration

Most factories registered in Taipei City used to be those of the light industries such as food processing and chemical manufacturing. The number of factories in the City by the end of 1968 was 2,805. Those engaged in food and tobacco processings topped the rest and accounted for 562, followed by those in chemical products for 403, and those in printing processings for 346. Each of fabricated metal products industry and machinery/ equipments manufacturing and repairing industry also had over 200 factories.

In recent years, businesses in the City tend to develop towards the service sector and industries focus on urban light industries and intensive technology businesses as a result of urbanization. The number of factories in the City was 1,552 by the end of 2005, a decrease of 44.67% compared with the end of 1968. Those engaged in computer communication, video and radio electronic products manufacturing industry accounted for 226 and stood at 14.56%. Compared with the end of 2004, all remained unchanged or decrease. Among these, computer communication, video and radio electronic products manufacturing industry showed the greatest decrease of 19 factories, followed by printing and related supporting activities industry decrease of 17 factories.

By administrative district, the number of factories is 539 in Neihu or 34.73%, the top among all, followed by 457 in Nangang or 29.45%. The number of factories in the two districts amounted for 64% of the total while the number of factories respectively in Zhongzheng, Zhongshan, Songshan, Wenshan and Daan was the lowest and accounted for only 1% of the total.

Number of Factories Registered in Taipei City

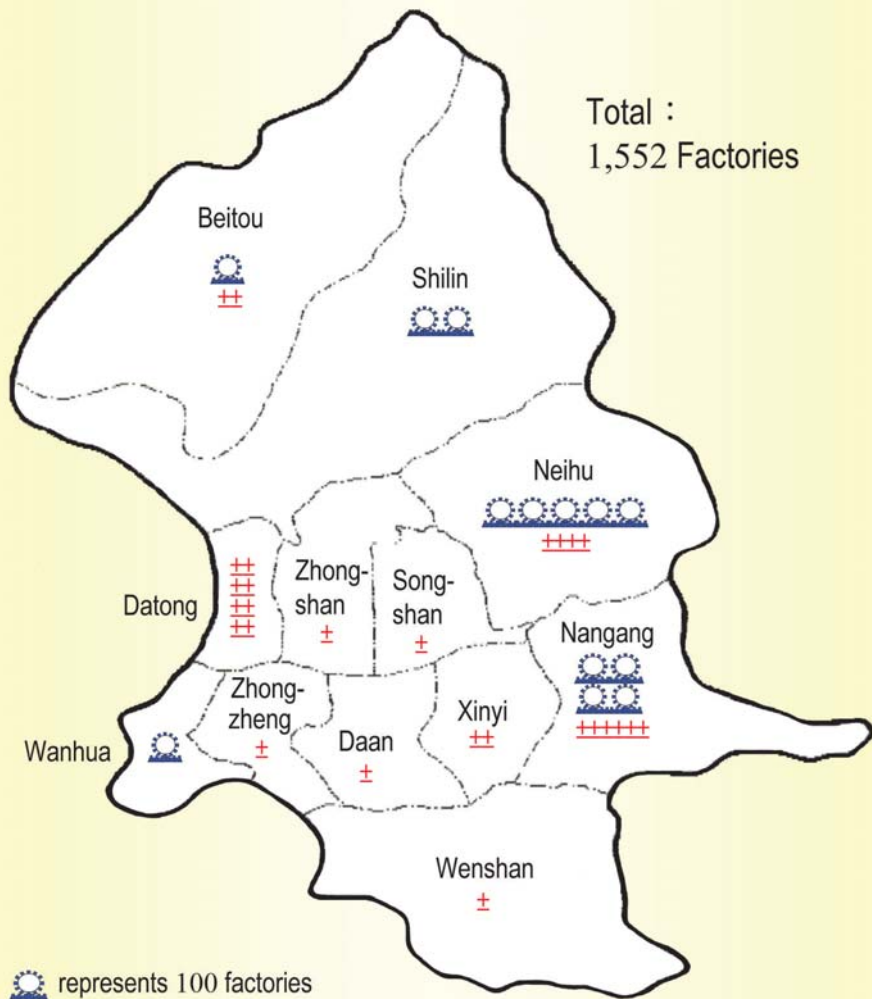
Industry	Number of Factories (Establishment)			
	End of 2005 (1)	End of 2004 (2)	End of 1968	Change (1) - (2)
Total	1,552	1,658	2,805	-106
Food and Beverage	102	107	562	-5
Tobacco	-	-		-
Textiles Mills	21	24	157	-3
Apparel, Clothing Accessories and other Textile Products	95	101	76	-6
Leather, Fur and Allied Products	10	10	13	-
Wood and Bamboo Products	2	2	93	-
Furniture and Fixtures	13	14	12	-1
Pulp, Paper and Paper Products	11	13	46	-2
Printing and Related Support Activities	212	229	346	-17
Chemical Material	4	4	-	-
Chemical Products	63	65	403	-2
Petroleum and Coal Products	-	-	9	-
Rubber Products	13	16	40	-3
Plastic Products	64	69	-	-5
Non-metallic Mineral Products	15	15	173	-
Basic Metal Industries	8	9	34	-1
Fabricated Metal Products	166	175	252	-9
Machinery/ Equipments Manufacturing and Repairing	138	147	256	-9
Computer Communication, Video and Radio Electronic Products	226	245	149	-19
Electronic Parts and Components	78	84		-6
Electrical Machinery/ Supplies/ Equipments Manufacturing and Repairing	106	112	-6	
Transport Equipments Manufacturing and Repairing	37	37	59	-
Precision, Optical, Medical Equipment and Watch & Clocks	95	99	-	-4
Other Industrial Products	73	81	125	-8


Source : Department of Economic Development.


Distribution of Factories in Taipei City

End of 2005

Total :
1,552 Factories



 represents 100 factories

 represents 10 factories

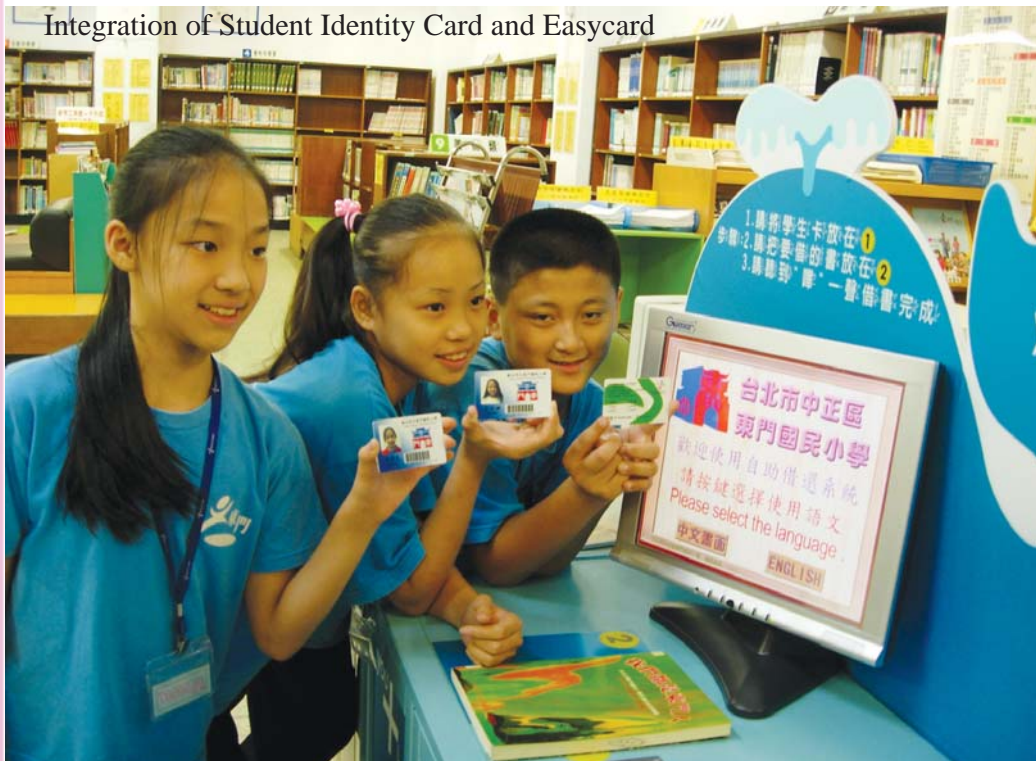
16. CyberCity

Since 1999, Taipei City Government has begun the project of "CyberCity" and focused on fundamental constructions of information, availability of Internet education, e-Government, and promotion of Citizens' digital life. After seven years' efforts, Taipei City now enjoys excellent performance compared to other major cities worldwide. In order to establish a wireless Internet environment, we currently continue to construct public wireless broadband Internet connections by incorporating civil resources. We also continue to promote civil wireless applications and public services in order to turn Taipei City into a most mobilized city, reach the objective of "Wireless Taipei with Infinite Future", and thus increase the entire city's competitiveness.

The results of the CyberCity project as of the end of 2005 include:

1. Fundamental information construction: Incorporate civil resources and establish a wireless Internet environment throughout the entire city. Wireless networks have been installed in the Xinyi business circle, 63 Mass Rapid Transit (MRT) stations, and main residential-business regions, and the current population coverage rate is 50%. It is estimated that it will increase to 90% by July of 2006.
2. Electronized government: Electronic document exchange is currently being used in 414 organizations of Taipei City Government and 46 private grade schools. The "1999 Taipei Citizen Hotline" and the single-window service system were established to strengthen the communications between the public and the government. We also promote video-conference system that can be used in case of emergency and for communication purposes.
3. Electronized businesses: We assist in the establishment of business template website in order to expand marketing channels. Businesses can also apply for relevant jobs online with their certificates, and this increases Taipei City's performance in serving the commercial sector. We also actively guide 12 unique business streets in Taipei City to establish dedicated websites, bringing owners of traditional businesses new marketing channels and business opportunities.
4. Electronized life: We promote contactless IC smart card, "Easy Card", that integrates the bus, MRT, and public parking systems in the Greater Taipei Area. More than six million copies have been sold by October of 2005. We also promote e-bus (Chinese-English bilingual dynamic bus inquiry system) that provides passengers with real-time information of bus arrival and departure, thus increasing the quality of service of public transportation.
5. Information education: The objective of having computers in every classroom in Taipei's schools has already been reached. Wireless coverage rate in all schools also reached 100% by the end of 2005. We have established Taipei e-Campus e-Learning Website that provides workers and the public with Internet learning services. We also provide the public three hours of free online training; more than 310,000 people have participated in this curriculum.
6. Reduce "digital divide": We assist the minority groups in our city (people with disabilities, seniors, and aboriginal people) by improving the environment and condition of accessing the Internet and information technology. This enhances their ability of using the Internet and reduces "digital divide".

Integration of Student Identity Card and EasyCard



17. Mass Communication

Taipei City, a metropolis with talents of resources, has been the center of journalism, culture, publishing and literary & art activities of all times. Mass Communication in Taipei is an important channel to facilitate the exchange of opinions between the government and the private sector. On one hand, the government endeavors to fathom current social trends and public opinions; on the other hand, it attempts to safeguard the rights of the consumers and citizens by monitoring and managing the operation of cable news network efficiently, controlling the fees strictly, and purifying the TV screen.

By the end of 2005, there were 5 television stations, 9 Cable TV companies, and 28 broadcasting stations. In order to protect the soundness of juveniles' minds and bodies, the City Government demands medias purify advertisement pages according to "the ordinance of preventing children and juveniles from sexual bargains", monitors cable TV programs and commercials, and penalizes infracted proprietors in accordance with the Law of Broadcasting and Televisions and relevant statutes ruled by the sanitation authorities, besides, inspects and prosecutes illegal issued or spread pornography films and VCDs.

In order to exhibit the administrative achievements, make full use of diversiform plane and electronic medias as ways to communicate municipal and life information, link up with citizens and the City Government in coordination with "CyberCity" policy, the City Government issues news about electronized handlings and strengthens international propaganda transmit information rapidly for medias usage. In addition, the "Taipei Pictorial", published monthly, reports deeply the past history, cultural and civilian features, and oncoming development of every administrative area. The bimonthly "Discover Taipei", published in English each odd month, introduces folk customs, culture and art, a variety of life information and so on. And in the light of significant policies of the City Government, irregular series-books concerned in information and service are published to intensively propagate and are offered for citizens to purchase.



18. Construction of Markets

During the last several years, in addition to the Taipei City Government's vigorous engagement in refurbishing old markets and constructing new ones, it also endeavors to centralize the management to reinforce quality services. In 1968, when Taipei reorganized into Municipality, there were only 7 public wholesale markets; after then, more have been established consecutively. By the end of 2005, the number of public wholesale markets amounted 11, covering the area of 181,800 m². In addition, open trading system has been set up to timely adjust demand and supply, and to stabilize prices.

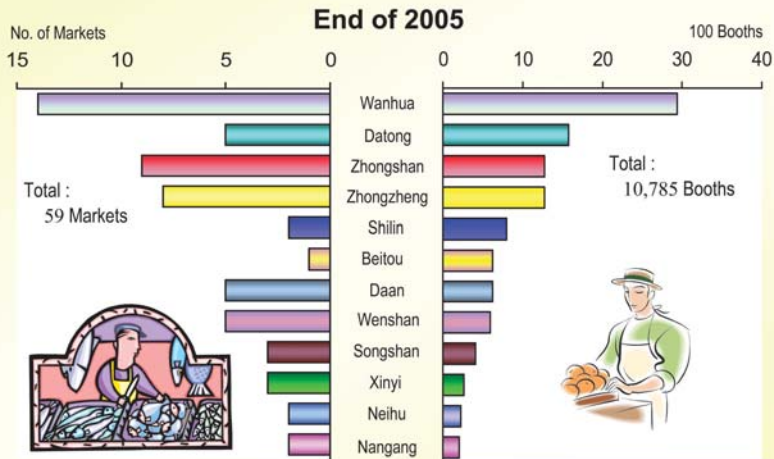
In 1968, there were only 35 public traditional retail markets covering an area of 80,802 m² and housing 2,518 retail booths in Taipei. Under social and economic impacts, the Citizens' shopping behavior changed drastically. Further, under the cutthroat competitions of the hypermarkets, supermarkets, and convenient stores, the operation of traditional retail markets tends to be difficult; likewise, it is necessary to modify their operation mode. On one hand, it is favorable to maintain the excellent community bond and humanized management in traditional markets; on the other hand, it deems essential to reorganize traditional markets to give an innovation outlook by integrating the old and the new. By the end of 2005, the City had a total of 59 public traditional retail markets with covering land 190,168 m², and 10,785 retail booths. Since the opening of Yanji Supermarket in 1981, there had been 35 public supermarkets by the end of 2005, among them, the number of supermarkets in Wenshan topped the list with 6. The average area of public supermarket per capita rose from 0.07 m² by the end of 1968 to 0.18 m² by the end of 2005.

Public Markets in Taipei City

End of Year	Wholesale Market			Retail Market					
	No. of Markets	Covered Land (m ²)	Floor Space (m ²)	Supermarket		Traditional Market			
				No. of Markets	Floor Space (m ²)	No. of Markets	Covered Land (m ²)	Floor Space (m ²)	No. of Booths
1968	7	26,778	9,920	-	-	35	80,802	37,329	2,518
1971	7	26,778	9,920	-	-	42	110,381	62,033	3,978
1981	8	98,760	46,717	1	3,798	61	173,924	151,086	11,266
1986	9	132,289	94,565	6	24,793	68	207,272	194,324	12,571
1991	11	161,960	107,909	16	58,771	70	210,461	192,919	12,795
1996	10	151,948	81,034	25	89,848	70	215,831	205,165	12,780
2001	10	164,738	93,422	28	88,145	64	200,506	190,030	11,830
2004	11	181,800	216,659	30	97,329	62	198,345	187,843	11,068
2005	11	181,800	216,659	35	109,135	59	190,168	178,021	10,785

Source : Department of Economic Development .

Public Retail Markets in Taipei City



Nanmen Market



19. Water Supply

The Taipei Water Department, responsible for tap water supply in the City, divides the City into five regions, each with an independent tap water supply system charged by a regional operation department. The tap water supply covers not only the City but also nearby towns and townships like Sanchong, Yonghe, Zhonghe, Xindian, and Beishan Li of Xizhi. Tap water was supplied to 1,503,353 households with a population of 3,833,192 by the end of 2005.

Tap water supply has grown rapidly in Taipei area since the City reorganization into municipality. The water diffusion rate was only 71% in 1968, but was over 99% in 1991. Water released totaled 911.52 million cubic meters in 2005, showing a rise of 5.3-folds over 144.51 million cubic meters in 1968. Comparably, the water sold jumped from 93.89 million cubic meters in 1968 to 563.04 million cubic meters in 2005. The effective water sale ratio, water sold as a percentage of water released, approximated 61.77% in 2005. On the average, the per capita daily water supply increased from 310 liters in 1968 to 651 liters in 2005. The revenue of the charges for water in 2005 amounted to NT\$4.6 billion, showing a rise of 29-folds over those of 1968. These achievements had resulted from the Government's efforts on developing new water resources, providing ample water supply and increasing the water diffusion rate during the past several years.

To meet the requirement arising from construction in the greater Taipei area and the public demand for water, the Taipei Water Department has launched a five-stage development plan. At the fourth stage, the Feitsui Reservoir was built, effectively securing a great amount of water resources for Taipei City. Stage five of the development plan is now undertaking; to be operated in two phases the project is planned to be completed by the year 2011.

The dam of the reservoir is located at the Feitsui Valley on the upper Beishi Stream, a feeder stream of the Xindian River. The reservoir, 30 kilometers away from the Taipei City, has a water-collecting area of 303 square kilometers, with the highest water surface being 170 meters from the deepest bottom. Its maximum water storage is 406 million cubic meters. The arch dam is 122.5 meters tall and 510 meters long on the top, and its construction was completed in June 1987. The two main water inlets for the Taipei tap water system are Qingtan and Zhitan, which have a reliable water-taking amount of 40 cubic meters per second. The reservoir will be able to satisfy the demand for tap water in Taipei City, Sanchong, Zhonghe, Yonghe, Xindian, Danshui, and Sanzhi by 2030.

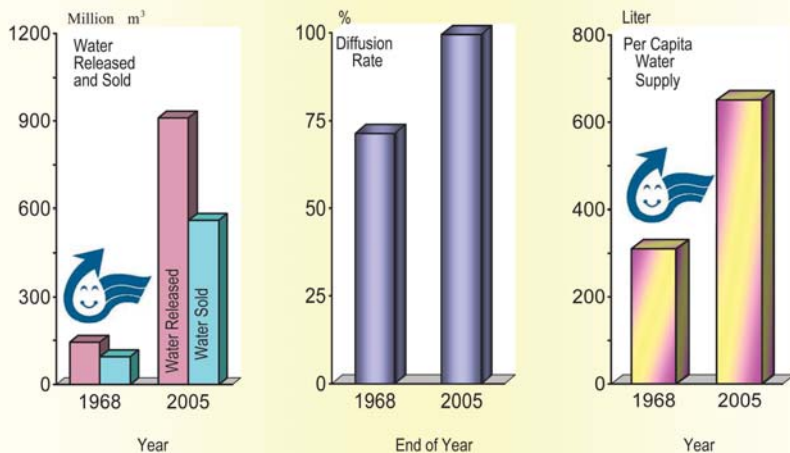
Overall Condition of Taipei Tap Water Works Operation

Item	2005 (1)	2004 (2)	1968	Change	
				Amount (3)=(1)-(2)	% (3)/(2) × 100
1. Households Served①	1,503,353	1,491,475	195,324	11,878	0.80
2. Population Served①	3,833,192	3,833,875	1,348,470	-683	-0.02
3. Diffusion Rate (%)①	99.49	99.49	71.21	0.00	--
4. Water Released (cubic meter)	911,518,166	947,818,529	144,512,938	-36,300,363	-3.83
5. Water Sold (cubic meter)	563,041,938	587,452,784	93,891,226	-24,410,846	-4.16
6. Effective Water Sale Ratio (%)	61.77	61.98	64.97	-0.21	--
7. Per Capita Daily Water Supply (liter)	651	676	310	-25	-3.70
8. Charges for Water (NTS)	4,579,068,116	4,683,142,754	153,233,952	-104,074,638	-2.22

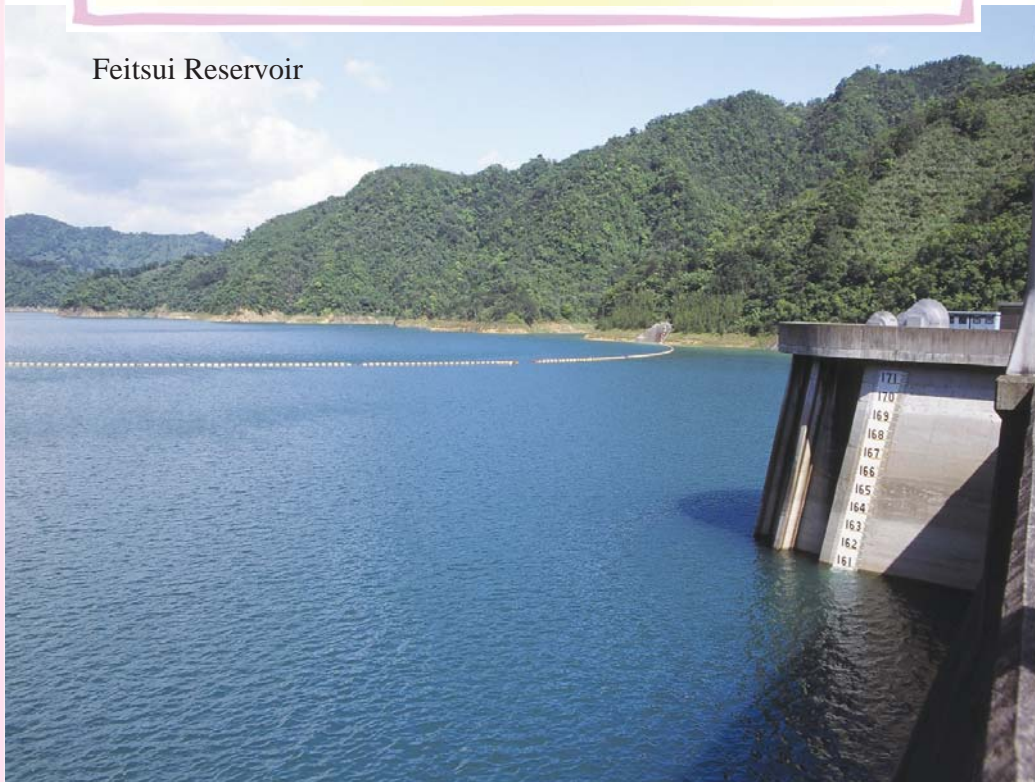
Note : ① Year-end data.

Source : Taipei Water Department.

Overall Condition of Taipei Water Works Operation



Feitsui Reservoir



20. Vehicle Registration

Taipei City is the political, economic, cultural, transport & communication center in Taiwan. The number of motor vehicles has drastically increased following the rise in GNP while road construction fails to catch up with the speed of growth in motor vehicles, resulting in an enormous burden for road transportation in the City. In recent years, the formation of the rapid transit network incorporated with transit buses and EasyCard system make the public transportation system increasingly convenient. And the residents are more willing to use public transportation vehicles instead of individual transportation ones, thus slowing down the growth in motor vehicles.

By the end of 2005, the number of motor vehicles reached 1,756,480 showing an increase of 404,541, or 29.92%, and an annual average growth of 2.65% compared to 1,351,939 in 1995. The number of automobiles increased 17,193 from 708,315 by the end of 2004 to 725,508, showing an increase of 2.43%. The number of motorcycles in 2005 increased 12,588 from 1,018,384 in 2004 to 1,030,972, showing an increase of 1.24%. Among the automobiles, the number of small cars for privacy increased 72,159 from 563,585 by the end of 1995 to 635,744, showing an increase of 12.80%, and the number of small car for business increased 37,194 from 37,323 by the end of 1995 to 74,517, showing an increase of 99.65%.

To compare the number of motor vehicles and the population in the City, the number of motor vehicles owned per 1,000 persons was 671 by the end of 2005 (277 for automobiles and 394 for motorcycles), showing an increase of 158 or 30.80% (18.38% for automobiles and 41.22% for motorcycles) compared with 513 (234 for automobiles and 279 for motorcycles) by the end of 1995.

Motor Vehicles in Taipei City

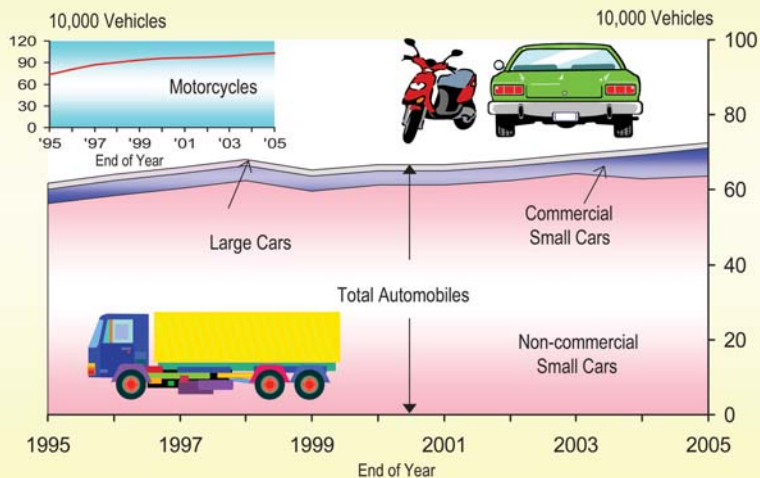
Unit : Vehicle

End of Year	Grand Total	Automobiles ①					Motorcycles
		Total	Large Cars for Privacy	Large Cars for Business	Small Cars for Privacy	Small Cars for Business	
1968	102,346	27,657	2,052	3,079	14,631	7,895	74,689
1971	157,553	44,285	3,520	4,489	25,422	10,854	113,268
1981	614,743	208,603	8,628	7,650	163,997	28,328	406,140
1986	928,693	300,847	8,075	8,299	249,892	34,581	627,846
1991	1,148,812	515,996	8,978	7,870	460,161	38,988	632,816
1996	1,443,630	640,353	7,268	8,449	583,938	40,698	803,277
2001	1,637,348	667,179	7,058	8,730	613,017	38,374	970,169
2004	1,726,699	708,315	6,465	8,502	630,211	63,137	1,018,384
2005	1,756,480	725,508	6,522	8,725	635,744	74,517	1,030,972

Note : ①From September of 2004, the car-rental vehicles included the small cars for business.

Source : Motor Vehicles Office.

Growth of Vehicles in Taipei City



Vehicles



21. City Bus Operation

Among the transportation means used, in addition to the large amount of traffic flowing from suburban areas, city bus has always played a vital part in the densely populated city. There was only Taipei City Bus Operation Office for bus operation after reorganization. In 1969, due to being opened for private operation, there also included four companies, Xinxin, Guanghua, Danan and Dayou operating in different districts. In 1977, a joint operation pattern was launched by those and other five bus companies, Zhongxing, Zhinan, Taipei, Sanchong and Capital. Thus, the operation mode by district was terminated and unified ticket price, bus stops and route numbers were implemented to benefit the residents. The Metropolitan Transport Corporation established after the privatization of Taipei City Bus Operation Office, began in January 2004. By the end of 2005, there were 15 bus companies to participate in the joint operation pattern.

The increasing number of motor vehicles owned by the citizens has made the capacity of city bus dropped all the way from the peak of 950.11 million passengers in 1985 to merely 640.15 million in 1995. To enhance the quality of the passenger transport system, Taipei City Government does not only reinforce the transportation function of buses but has also carried out many measures such as broadening the net of exclusive bus lanes, enhancing the service quality of buses, and creating a comfortable waiting environment to make buses more accessible to the public.

The average number of city buses in service per day was 3,805 for 2005, an increase of 37% compared to 1995. The average capacity per bus per day was 441. The annual total capacity was 612.68 million with an average daily capacity of 1.68 million. As estimated, the number of persons relying on bus transportation per day was about 0.84 million, a strong proof indicating the importance of city bus for the residents.

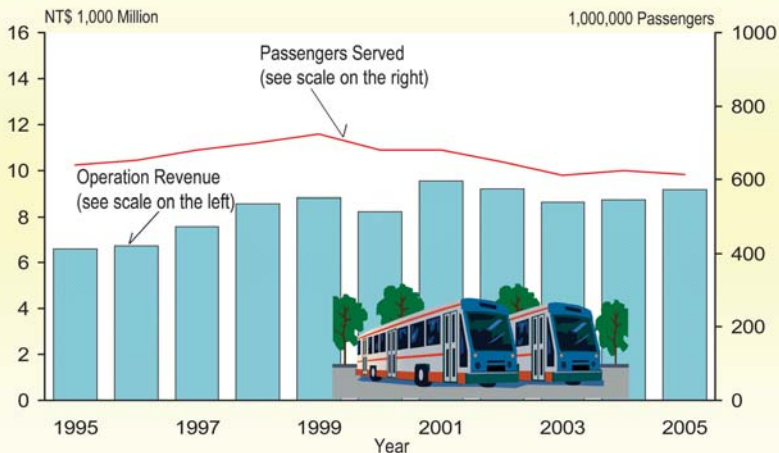
Operational Status of City Bus in Taipei

Year	Bus Service Routes ①	Buses in Use (Daily Average)	Bus Service Trips (1,000 Trips)	Bus Service Length (1,000 Km)	Passengers Served (1,000 Persons)	Operation Revenue (NT\$1,000)
1968	53	607	5,957	42,257	327,833	312,705
1971	104	1,295	9,308	91,107	551,052	591,355
1981	196	2,701	24,066	184,850	881,987	3,904,314
1986	207	3,250	27,067	217,164	925,930	5,107,622
1991	218	2,891	22,772	189,722	781,843	6,563,620
1996	282	2,916	21,430	182,874	651,193	6,747,087
2001	269	3,359	24,651	223,648	680,888	9,527,592
2004	280	3,666	27,139	257,110	624,896	8,753,112
2005	284	3,805	25,228	256,716	612,675	9,159,988

Note : ① Year-end data. It was still calculated based on ratified routes even after 2000. However, those of the same bus numbers are considered the same routes regardless of main or auxiliary route, right or left route, express or nonstop route, whether operated by two or more companies.

Source : Department of Transportation.

Passengers Served and Operation Revenue by Bus Companies in Taipei City



22. Mass Rapid Transit

The Mass Rapid Transit System (MRTS) is one of the best solutions for traffic congestion in metropolitan areas and shoulders the mission of urban development. Taipei City Government teamed up with Taiwan Provincial Government and Taipei County Government in establishing Taipei Rapid Transit Co. (TRTC) on July 29, 1994 for the operation of the MRTS in the greater Taipei metropolitan area. The business range of TRTC covers main corridors in the greater Taipei metro area, such as Muzha, Danshui, Xindian, Nangang, Banqiao, Tucheng, Zhongyonghe, Neihu, Xinzhuang and Luzhou.

Since the opening of the Nangang Line on December 30, 2000, the seven routes of the MRTS which are in service are Muzha Line, Danshui Line, Zhonghe Line, Xindian Line, Nangang Line, Banqiao Line and Xiaonanmen Line. The Xiaobitan Branch Line will be finished and start to operate on September 29, 2004, and its total length of the entire MRTS will be 67 kilometers and include 63 stations. The number of passengers of Rapid Transit increased year by year since March 28, 1996, except for 2003. It decreased slightly due to Severe Acute Respiratory Syndrome (SARS) at that year. In 2004, the amount of passengers started to rise after the perceived threat of SARS was diminished. The total capacity of MCT (medium volume transit) for 2005 was 31.47 million and that of MRT (mass volume transit) was 329.26 million. The total revenues for 2005 were NT\$7,789.06 million.

The TRTC has carried out all kinds of integrated measures of mass transportation since its operation, and it will keep improving more convenient MRT services such as: follow-up routes and Light Rail Transit system, passengers (information guideline system, integration of tickets and EasyCard, the efficiency of MRT and the joint development plans. This will provide services of higher quality for passengers, and enable the MRT to optimally serve people.

Overall Operation Status of the Mass Rapid Transit System

Year (Month)	No. of Passengers			Revenues (NT\$1,000)	Cases of Accidents ^②	
	Total	MCT ①	MRT ①		MCT ①	MRT ①
1996	11,204,389	11,204,389	-	286,812	17	-
1997 ^③	31,079,749	15,542,427	15,537,322	998,779	13	8
2001	289,642,714	32,088,940	257,553,774	6,521,102	3	15
2002	324,417,124	32,617,520	291,799,604	7,206,152	5	6
2003	316,189,128	30,211,659	285,977,469	6,978,189	2	14
2004	① 350,141,956	31,735,815	① 318,406,141	7,615,737	2	5
2005	360,729,803	31,469,377	329,260,426	7,789,059	2	1
Jan.	29,811,881	2,666,065	27,145,816	637,558	-	-
Feb.	25,879,279	2,177,173	23,702,106	568,197	1	-
Mar.	31,866,866	2,950,137	28,916,729	686,470	-	1
Apr.	29,576,241	2,674,511	26,901,730	638,890	-	-
May	30,251,626	2,735,305	27,516,321	652,121	-	-
June	29,029,861	2,575,815	26,454,046	624,995	-	-
July	30,011,759	2,501,165	27,510,594	650,465	1	-
Aug.	30,343,866	2,568,917	27,774,949	661,654	-	-
Sep.	29,408,909	2,545,615	26,863,294	637,217	-	-
Oct.	30,689,307	2,585,674	28,103,633	662,046	-	-
Nov.	30,604,448	2,662,879	27,941,569	664,114	-	-
Dec.	33,255,760	2,826,121	30,429,639	705,330	-	-

Notes : ①MCT means Muzha line while MRT includes Danshui line, Zhonghe line, Xindian line, Nangang line, Banqiao line and Xiaonanmen line .

②The accidents include collision, overturn, derailment and system delay over 20 minutes.

③Daily ticket went on sale on Dec. 25, 1997 and the data was included in the above table.

Source : Taipei Rapid Transit Co..

Number of Passengers Served by the Rapid Transit System 2005



Banqiao Nangang Line



23. Municipal Parking Facilities

Taipei is a city of intense business activities, and it has a high demand for parking spaces. With the increasing amount of cars each year and cars from outside the city, the problem of insufficient parking spaces has become more and more serious. To increase the parking conversion rate, the City Government has implemented increment parking rate and time-limited parking on some road sections. Taipei City Government will establish the citywide parking information guiding system, strengthen the digital management system of roadside parking fees, and apply the Easycard to public and private parking lots to provide a more convenient parking service for the public.

There was only one public parking lot with a total area of 157 pins (each pin is equivalent to 36 square feet) and maximum capacity of 42 cars upon reorganization in 1968. By the end of 1981, there were totally parking area of 41,294 pins with maximum capacity of 10,346 cars and 2,450 motorcycles. Following the active development and construction by the City Government, the total area had reached 547,362 pins with maximum capacity of 68,935 cars and 16,396 motorcycles by the end of 2005. To effectively manage the increasing number of parking facilities, part of them are contracted to the private sector for management with the limited human resource of the City Government.

For the revenue from municipal toll parking facilities, the annual revenue for 1968 was NT\$634 thousand and increased by nearly NT\$200 million for 1981, a 312-time increase compared to 1968 and by NT\$3.6 billion for 2005, a 17-time increase compared to 1981.

Municipal Parking Facilities in Taipei City

Year	Area ① (Pin) ②	Parking Capacity (Vehicles) ①				Motorcycles	Parking Revenue ③ (NT\$1,000)
		Automobiles					
		Total	Large Cars	Small Cars			
1968	157	42	-	42	-	634	
1971	1,408	376	-	376	-	1,106	
1981	41,294	10,346	478	9,868	2,450	198,437	
1986	107,490	27,713	440	27,273	3,832	548,941	
1991	190,519	36,866	596	36,270	5,846	1,206,994	
1996	277,921	55,454	536	54,918	4,142	1,807,997	
2001	454,682	62,161	555	61,606	5,058	2,947,188	
2004	526,522	66,658	689	65,969	12,749	3,320,458	
2005	547,362	68,935	754	68,181	16,396	3,551,897	

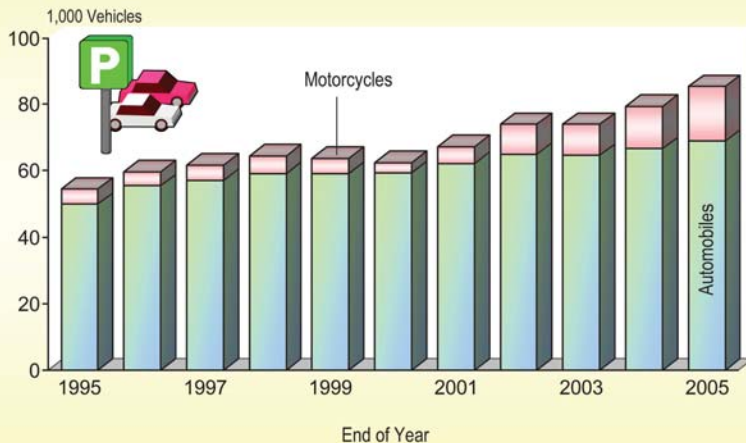
Notes: ①Year-end data, including some free charge parking lots.

②Each pin is equivalent to 36 square feet.

③Excluding the revenue from the public and private tow services. Including loyalty incomes from contracted private parking facilities since August 1986.

Source: Department of Transportation.

Capacity of Municipal Parking Lots in Taipei City



Longmen Car Park



24. Housing

The bloom in commercial and business activities in Taipei City, paves the way to social prosperity. Although the registered population in Taipei increased stagnantly in recent years, the small families increased day by day, resulted in a strong demand for housing. According to the house tax statistics compiled by the Taipei Revenue Service, the City had a total of 996,599 housing units covering a total area of 150.47 million m² in 2005. Of all the housing units, 801 thousand ones were for residential purposes, covering an area of 82.83 million m². For the total population of 2.62 million in the City, each could share a residential area of 31.66 m² that showed a rise of 2.2-folds over 9.99 m² in 1971. The family income and expenditure survey conducted in 2004 showed that about 80 percent of families had their own residential housing, much higher than 50 percent in 1976.

In 2005, the living space for each person was 31.66 m². Compared with 31.15 m² of the previous year, the size increased 1.64%. And the average space for each house was 103.39 m². The average size of every housing unit increased by 0.24% as compared with 103.14 m² of the previous year.

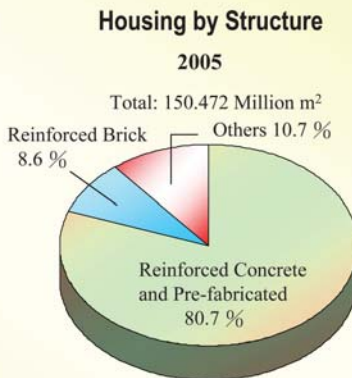
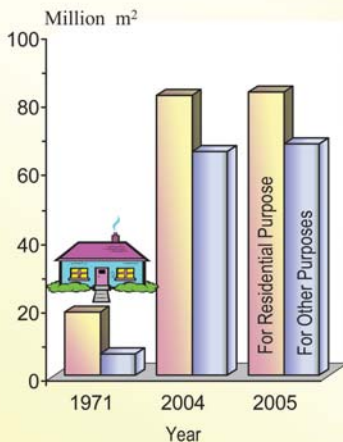
The reinforced concrete and pre-fabricated structures accounted for 81% of the total housing space that occupied 150.47 million m², and the reinforced brick structures, for 9%. On the other hand, houses made of brick, wood, bamboo, and mud, which have been gradually replaced by modern buildings, are expected to diminish in the future.

Housing Units and Floor Space in Taipei City

Year and Item	Total		For Residential Purpose		For Other Purposes	
	Unit	Space (1,000 m ²)	Unit	Space (1,000 m ²)	Unit	Space (1,000 m ²)
1971	220,366	24,695	177,732	18,373	42,634	6,322
2001	961,490	135,914	767,155	78,398	194,335	57,516
2004	987,538	146,960	792,023	81,692	195,515	65,268
2005	996,599	150,472	801,165	82,833	195,434	67,639
Steel Reinforced Concrete	15,775	12,243	5,330	916	10,445	11,327
Reinforced Concrete and Pre-fabricated	832,603	121,349	673,728	69,314	158,875	52,035
Reinforced Brick	103,650	12,909	86,907	9,906	16,743	3,003
Brick Stone	28,207	2,403	22,550	1,850	5,657	553
Wood	12,181	771	10,099	617	2,082	154
Others	4,183	797	2,551	230	1,632	567

Source : Taipei Revenue Service.

Floor Space of Housing in Taipei City



Buildings Licensed for Use by Taipei City

Unit of Area: Square Meters

Year	Total		For Residential Purpose ^①		For Other Purposes	
	Number	Covering Area	Number	Covering Area	Number	Covering Area
1968	11,362	2,011,949	6,197	1,591,926	5,165	420,023
1971	4,977	2,872,320	2,901	1,850,664	2,076	1,021,656
1981	3,604	5,277,772	3,148	4,119,456	456	1,158,316
1986	1,933	4,645,674	1,461	2,819,870	472	1,825,804
1991	824	2,768,362	591	1,251,430	233	1,516,932
1996	719	3,200,083	508	1,758,550	211	1,441,533
2001	553	2,996,275	375	1,376,493	178	1,619,782
2004	520	3,015,724	265	1,216,618	255	1,799,106
2005	543	2,735,450	284	1,166,688	259	1,568,762

Note : ^①Including residential houses, residential buildings, and shop-residential buildings.

Source : Public Works Department.

25. Roads

Roads are the major lifelines for traffic in a city. A citywide road system must be built to promote an orderly and well-structured urban development. The City Government has always focused on planning, expansion, and maintenance of streets and roads in an attempt to improve the traffic in the city.

The 1969 census statistics offered by Maintenance Office, Public Works Department of Taipei City Government, showed that the roads in the City by the end of 1969 were 1.01 million meters in total length and 7.97 million m² in total area, and 7.88 meters in average width per road. By the end of 2005, the numbers had increased respectively by 1.54 million meters, 20.69 million m², and 13.44 meters. As a result, the increases had respectively been 0.53 million meters, 12.73 million m², and 5.56 meters in the last 36 years.

To relieve traffic congestion and meet the needs of transportation development in the greater Taipei metropolis, the "Massive Rapid Transit System for Taipei Metropolis" devised by the City Government is currently under construction. The southbound extension of the Shui Yuan Expressway, East- West Expressway (Civil Boulevard), East side Expressway, Zhoumei Expressway, and Xinyi Branch of North Second Highway are already open to the public. Now the City Government is drawing out the River Bank Huanhe North Road, the second stage of Zhoumei Expressway. It is expected that the completion of these projects will go through major traffic lines, shorten travel time, and give a new look to the city traffic.

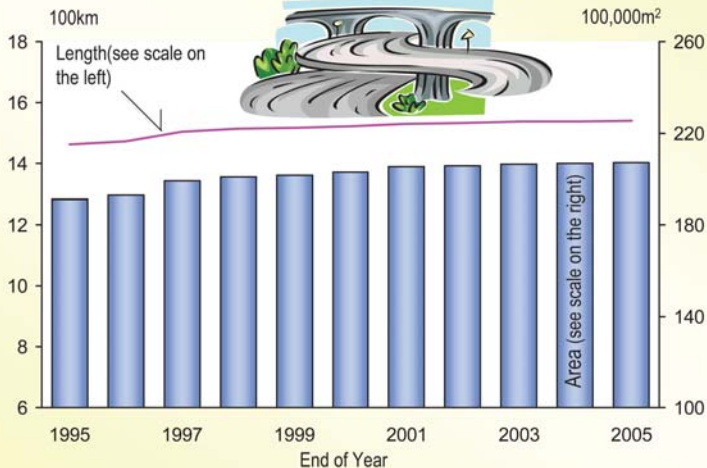
In addition, Taipei MRT system has initially a length of 91.4 km as approved by the Executive Yuan, consisting of nine lines: Danshui, Xindian, Nangang, Banqiao, Tucheng, Zhonghe, Muzha, Neihu, and Xiaonanmen. 96.68%, of the entire project was completed at the end of 2005. Muzha, Danshui, Zhonghe, Xindian, Bannan (Xinpu Station to Kunyang Station only), and Xiaobitan Branch lines were respectively inaugurated and open to the public in March 1996, December 1997, December 1998, November 1999, December 2000, and September 2004.

Total Length and Area of Roads in Taipei City

By Width	End of 2005		End of 2004		End of 1969		Change	
	No. (1)	%	No. (2)	%	No.	%	In No. (3)=(1)-(2)	In Pct. (3)/(2)× 100 (%)
Length (m)								
Total	1,539,602	100.00	1,537,996	100.00	1,010,732	100.00	1,606	0.10
less than 10 meters	875,324	56.85	875,214	56.91	789,096	78.07	110	0.01
10- less than 20 meters	372,843	24.22	371,908	24.18	163,058	16.13	935	0.25
20- less than 30 meters	136,786	8.88	136,786	8.89	34,871	3.45	-	-
30- less than 40 meters	74,590	4.84	74,590	4.85	10,730	1.06	-	-
40 meters and more	80,059	5.20	79,498	5.17	12,977	1.28	561	0.71
Covering Area (m ²)								
Total	20,694,335	100.00	⊕ 20,656,071	100.00	7,965,081	100.00	38,264	0.19
less than 10 meters	5,766,966	27.87	5,766,044	⊕ 27.91	4,202,735	52.77	922	0.02
10- less than 20 meters	5,077,819	24.54	⊕ 5,071,676	24.55	2,119,755	26.61	6,143	0.12
20- less than 30 meters	3,270,247	15.80	3,269,682	15.83	767,175	9.63	565	0.02
30- less than 40 meters	2,462,798	11.90	2,462,798	11.92	343,372	4.31	-	-
40 meters and more	4,116,505	19.89	4,085,871	19.78	532,044	6.68	30,634	0.75

Source : Public Works Department.

Lengths and Covering Areas of Streets and Roads in Taipei City



Xinyi Expressway



26. Flood Prevention Facilities

Taipei Basin is a low land located at the midstream of the Danshui River with the Danshui, Keelung Rivers and Xindian River running through it. Rainwater often runs rapidly down from surrounding mountains and converges in Taipei Basin, resulting in floods in case of typhoons and torrential showers. In an attempt of preventing potential floods in the greater Taipei metro area, besides abiding with the "Taipei Area Flood Prevention Plan", by considering Taipei's overall environment, we proceed actively with the "essential points of a total water control plan of Taipei" to establish Taipei as a city of "high water preservation, high water permeation, and high flood prevention" in the 21st century, and reach the target of preserving water in the upper reaches, decreasing floods in the middle reaches and preventing floods in the lower reaches. The Keelung River Repair project that aimed to convert the existing river channel to the new one was completed in 1994 and its flood prevention function has also taken effect. A variety of works for river channel repairing, embankment building, and setup of temporary water-pump stations are also successively under execution.

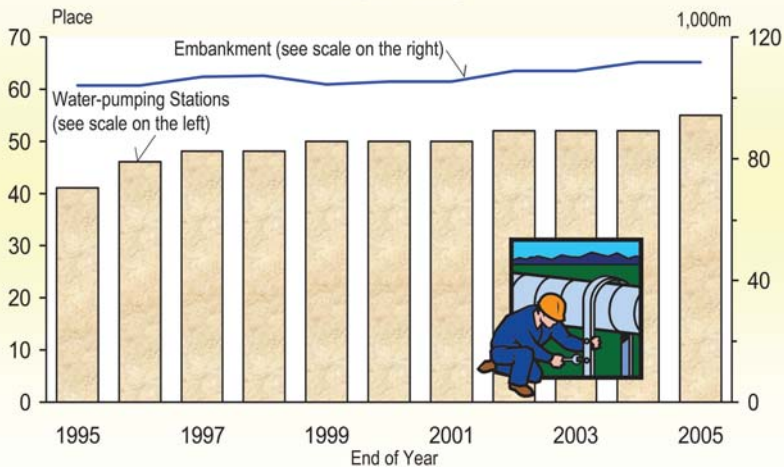
Prior to the reorganization, almost all the embankments in the City were not equipped with newly built flood prevention facilities. The flood prevention facilities in Shilin, Beitou, Neihu, Nangang, Mu- zha and Jingmei were taken over by the City Government following their inclusion in the City after the reorganization. In light of the importance of flood prevention, the City Government started to actively reinforce the construction of a variety of flood prevention facilities and rainwater drainage systems, which were expanded to a considerable extent by the end of 1981. For example, there were 91,871 meters of embankment, 21,092 meters of levee, 112 T-shaped dams, 29 pumping stations, 251 floodgates, and 17 escape exits. By the end of 2005, there were 111,683 meters of embankments, 64,668 meters of levees, 106 T-shaped dams, 55 pumping stations, 258 floodgates, and 42 escape exits. Compared to the data as of the end of 1981, the increase was 21.57% for length of embankment, 2.07 times for length of levee, 26 for number of pumping station, 7 for number of floodgate, and 25 for number of escape exit and the only decrease was 6 for T-shaped dam in the last twenty-four years.

Flood Prevention Facilities of Taipei City

End of Year	Embankment (meter)	Levee (meter)	T-shaped Dams (set)	Pumping Stations (place)	Floodgates (set)	Escape Exits (place)
1968	30,960	5,725	11	5
1971	39,741	8,024	32	14
1981	91,871	21,092	112	29	251	17
1986	95,879	25,233	113	37	239	18
1991	97,670	33,954	114	40	245	26
1996	104,220	59,165	114	46	255	33
2001	105,318	58,662	106	50	256	37
2004	111,683	64,148	106	52	258	40
2005	111,683	64,668	106	55	258	42

Source : Public Works Department.

Water-pumping Stations and Embankment of Taipei City



Flood Prevention Practice



27. Parks and Green Fields

The shaping of city look is extremely important for Taipei as a rapidly developing global metropolis. In addition, the use of parks and greens increases following the increasing demands of the citizens for quality in recreational life. To build Taipei as an "international green city", the City Government continues with a citywide green campaign. In addition to waterfront development and tree planting at riverside areas, the City Government is actively encouraging companies and the citizens to adopt parks, greens and street trees; further, it targets to combine green zoned roads and parks with recreational spaces for the expansion of the latter. The City Government further aligns development of parks to the public opinion by making an all-dimensional plan that combines local cultures, landscapes and eco-systems etc.

The City had 518 parks with a total area of 7.42 million m², 190 green fields with a total area of 0.71 million m² together with 65 sport spots for child, plazas, and riverside parks with a total area of 13.10 million m² by end of 2005. Thus, each citizen had in average a park or green field area of 5.01 m², a 1.7-time increase compared to 1.84 m² by the end of 1981. Also, there were 83,758 trees along streets and 2,182,994 other planted trees by the end of 2005. On the average, every 1.2 persons had one tree.

Parks, Green Fields and Trees along Streets in Taipei City ①

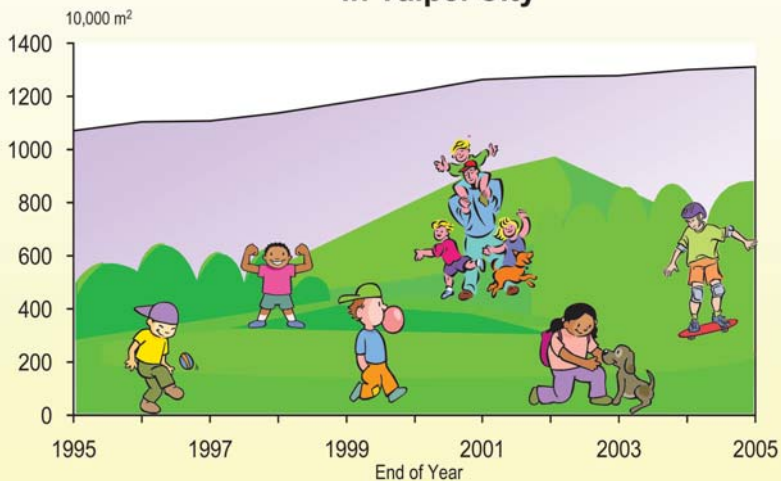
Unit of Area : 1,000 Square Meters

End of Year	Parks		Green Fields		Sport Spots for Child and Riverside Parks		Plazas		Trees along Streets (No.)
	No.	Area	No.	Area	No.	Area	No.	Area	
1968	25	1,011	16	150
1971	30	1,047	37	264
1981	157	3,690	162	430	15	49	81,780
1986	282	6,512	283	754	5	57	125,468
1991	360	8,192	330	1,068	15	99	109,478
1996	426	9,794	354	1,091	18	138	113,517
2001	484	7,144	184	730	35	4,623	23	147	113,849
2004	512	7,363	188	713	36	4,733	29	175	104,875
2005	518	7,422	190	711	36	4,813	29	152	83,758

Note : ①In 1998, all parks, green fields, sport spots for child, plazas, riverside parks whether as a part of urban planning or not were reconsolidated in accordance with design attributes in urban planning. The area of parks and green field in a wider sense included all the foregoing since then.

Source : Public Works Department.

The Area of Parks and Green Fields in Taipei City



Flower Exhibition



28. Building Management

Building management acts as a measure for maintaining public safety and protecting legal rights and benefits. It takes into account both convenience and benefits for people as well as achieves the dual purpose of regulation and service provision. For example, the application procedure characters for permits and licenses are shortened; the construction industry is under rigorous management; the quality control procedure for building materials is implemented; and management for on-site construction is enhanced to prevent incidents against neighbors. With these endearments, Taipei City Government improve the quality of construction works, ensure public safety, and strengthen management and inspections of completed buildings citywide (especially those on hillsides) for public safety.

In 2005, among all the approved permits for building management, the number of approved construction permits for buildings was 678 or 29.40% of the total. The number of buildings covered was 955 with a total covering area of 4,131,332 m² and the total construction cost about NT\$46.9 billion. To give ranking by total covering area, housing building topped the rest at 48.65%, followed by office 7.62% and others 43.73%. To make comparison of building area by administrative district, Neihu topped the rest with 559,635 m², followed by Xinyi 457,259 m², Nangang 430,192 m², and Songshan fell in the last with 59,315 m².

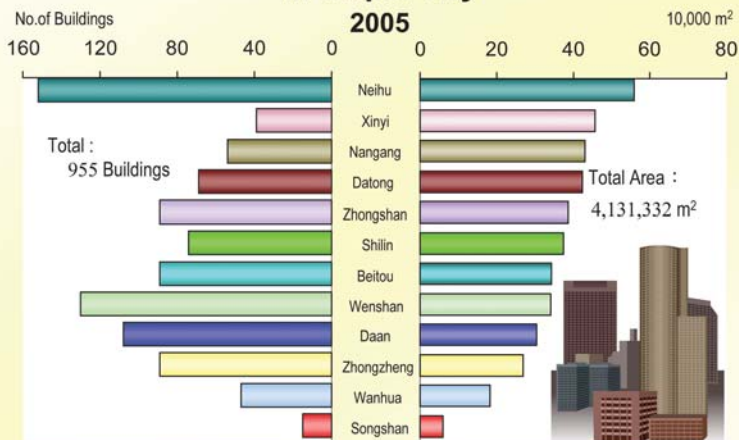
Buildings with Construction Permits Issued by Taipei City

Year	Total		Housing ①		Office		Others	
	No.	Covering Area (m ²)	No.	Covering Area (m ²)	No.	Covering Area (m ²)	No.	Covering Area (m ²)
1968	9,244	3,384,684	8,443	2,686,748	132	125,497	669	572,439
1971	7,077	4,747,906	6,294	3,476,642	102	469,916	681	801,348
1981	4,190	8,521,337	3,598	6,771,418	261	1,116,050	331	633,869
1986	1,798	3,517,568	1,467	2,180,543	143	746,988	188	590,037
1991	843	3,541,810	576	1,787,143	64	463,800	203	1,290,867
1996	558	1,731,971	373	782,907	54	273,478	131	675,586
2001	464	2,832,694	236	872,362	44	444,080	184	1,516,252
2004	773	2,924,496	487	1,603,979	36	207,831	250	1,112,686
2005	955	4,131,332	609	2,010,074	40	314,769	306	1,806,489

Note: ① Including residential houses, residential buildings, and shop-residential buildings.

Source: Public Works Department.

Buildings with Construction Permits Issued in Taipei City



The View of Taipei Metropolis



29. Educational Development

Education is the root of a nation and a centennial program. Our mandatory education has been extended to 9 years since the academic year in 1968, and since the 2001 academic year, we have brought "Nine-year Integrative Curriculum" into practice. In recent years, to reduce junior high school students' pressure of entering high school and increase the channel of continuing education, the government actively improved the diverse acceptance system of high schools and promoted the localization of high schools/vocational high schools to meet junior high school students' need of entering a nearby high school. Additionally, the government effectively made use of the resources of special education, and strengthened the diverse arrangement for disabled students. To develop the diversified language training, we brought native language teaching and English teaching into the elementary schools' curriculum. Our desire is to have students start to learn when they are in the first or second grade. On-line learning programs are provided and community universities are created to develop diverse adult continuing studies to make the concept of lifelong learning practicable.

Taipei City is not only the political and economic center, but also the hub of education and culture. There were 201 public and private schools with 462,699 students upon the reorganization of the City in academic year 1968 and 310 schools with 654,092 students in academic year 2005.

The 310 schools include 27 universities and colleges (consisting of 23 independent universities /colleges and 4 junior colleges) with 245,940 students, 130 secondary schools (including 63 junior high schools, 50 high schools and 17 vocational high schools) with 224,981 students, and 153 elementary schools with 183,171 students. Schools have increased by 54% and students by 41% following the increasingly popularized education in the last 37 years.

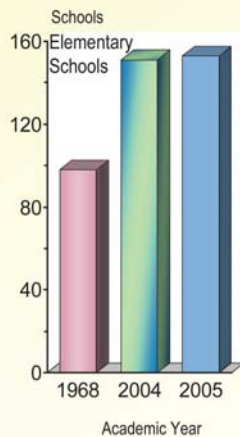
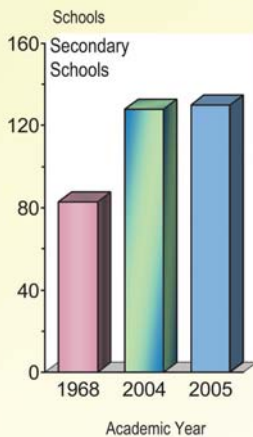
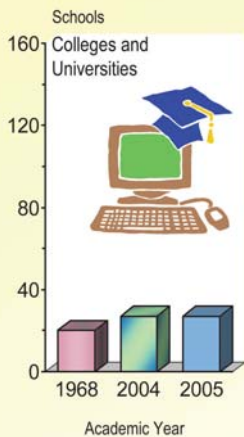
Statistics for the number of classes indicate that there were 8,982 classes for schools at all levels in academic year 1968 and the number increased to 18,775, showing a 1.09 times in academic year 2005, at a rate of. The average class size had dropped from 52 students in academic year 1968 to 35. This shows that schools at all levels tend to adopt the small class system, which is doubtlessly helpful for improving teaching quality.

Schools, Classes and Students of Taipei City

Academic Year	No. of Schools	No. of Classes	No. of Students	Average Size of a Class
1968	201	8,982	462,699	52
2001	304	18,500	674,713	36
2004	306	18,745	660,314	35
2005	310	18,775	654,092	35
Universities and Colleges	27	6,269	245,940	39
Vocational High Schools	17	1,152	46,453	40
High Schools	50	1,941	79,803	41
Junior High Schools	63	2,973	98,725	33
Elementary Schools	153	6,440	183,171	28

Source : Department of Education.

Number of Schools in Taipei City



Ecology Teaching



30. Social Education

In recent years, the City has successively opened Institution of Taipei Cultural Center, Taipei Fine Arts Museum, Taipei Children's Museum of Transportation & Communication, Taipei Astronomical Museum and Taipei Youth Activity Center and continues to enrich the hardware and software in these facilities. The Taipei Zoo has also been relocated to Wenshan District with an expanded area that accommodates several exhibition halls by different themes for diversified educational functions. Taipei Children's Recreation Center is divided into three areas that feature different styles and looks of "folk culture", "entertainment" and "science" with educational and entertainment functions. The first library for the visually impaired is also opened to provide user-friendly and complete services for the visually impaired. The City also continues to organize a variety of cultural and artistic activities such as music festivals, traditional art festivals, drama festivals, seminars for the citizens, and contests of fine arts, music, dance, and local dramas. School campuses are open for music activities and various culture and craft seminars for youths in the community to achieve the goal of infusing culture deep in life. Take Taipei Public Library as an example. The number of branches had achieved 39 with the total collection about 4.63 million volumes by the end of 2005. The number of persons visiting Taipei Zoo and Taipei Children's Recreation Center increased to 4.09 million in 2005.

The supplementary education is aimed to further enrich the citizens with their applied knowledge and improve their education level and practical skills. Hence, the City has provided short-term programs for supplemental education and training in practical skills. In addition, it has established evening schools respectively for the fundamental level (affiliated to elementary schools), for the secondary level (affiliated to junior or high schools), and for the vocational level (affiliated to vocational high schools). In academic year 2005, there were 46 evening schools accommodating 12,707 students, showing a 1.4-time increase in number of schools and a decrease of 24% in number of students in the last 37 years since academic year 1968.

Overview of Social Education in Taipei City

Year	Taipei Public Library			Visitors to Zoo and Children's Recreation Center	Evening Schools ③	
	Books in Collection ①	No. of Book-Borrowers ②	Volumes of Books per 1,000 Persons		No. of Schools	No. of Students
1968	96,004	1,381,120	59.83	1,089,841	19	16,620
1971	128,145	1,342,581	69.66	1,172,637	30	26,534
1981	337,074	1,853,832	148.43	3,194,817	47	35,585
1986	916,504	7,061,998	355.90	2,366,280	49	38,083
1991	1,853,293	6,509,550	681.86	4,172,952	50	31,434
1996	2,613,772	13,055,276	1,003.22	5,285,744	53	22,197
2001	3,535,874	1,671,560	1,342.50	6,524,320	51	13,994
2004	4,148,730	1,905,198	1,581.99	4,031,270	46	11,986
2005	4,633,942	1,958,753	1,771.13	4,090,854	46	12,707

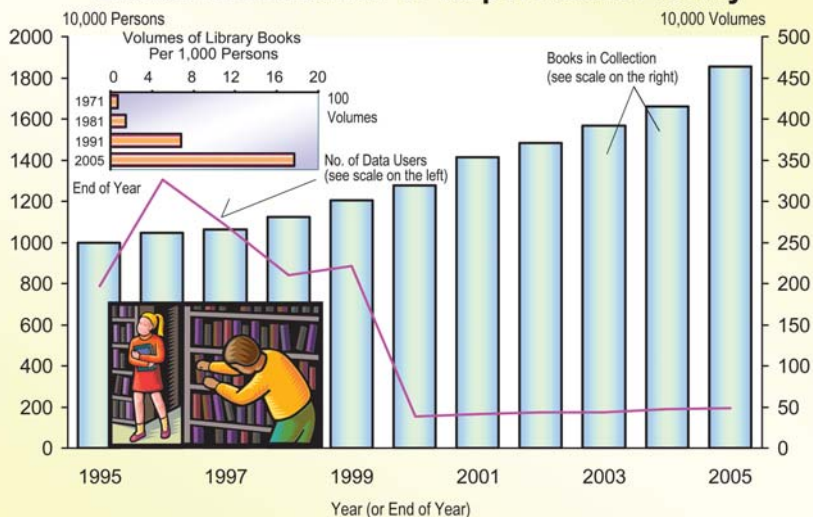
Notes: ① Year-end data, excluding gifted books before 1981, including multimedia data after 2005.

② Referring to users before 1999.

③ Data for academic year.

Source: Department of Education.

Books in Collection of Taipei Public Library



Taipei Astronomical Museum



31. Social Relief

Adhering to the principle "showing concern initiatively, thinking highly of the needs, and helping to be self-reliant" and in combination with the vast social resources, the social relief in Taipei provides appropriate attention for the impoverished and the ill and domiciles for the solitary and the poor in order to reach the goal of relief and care. Passively speaking, the social relief gives those in hardship proper help to maintain their basic lives, and positively speaking, it helps improve their working ability to earn their living.

Since Taipei City reorganized into municipality, low-income population has been decreasing year by year, from 48,442 persons (10,038 households) in 1968 down to 32,146 persons (13,008 households) including 2,129 persons for level 0; 820 for level 1; 6,223 for level 2; 11,325 for level 3 and 11,649 for level 4 in 2005. Low-income population has decreased by 34% in the last 37 years. It resulted partly from a prosperous and stable society that produced abundant employment opportunities and partly from a successful social welfare program.

For low-income population, the City Government provides a monthly subsidy to help them. In 2005, NT\$348.27 million was paid for monthly subsidies to help stabilize the society, including NT\$222.90 million for 22,769 low-income persons of levels 0 ~ 1, NT\$125.37 million for 24,858 low-income households of level 2.

Social Relief in Taipei City

Year	Social Relief to the Poor Population	Free Medication ①		Arranging Temporary Jobs ②	Emergency Hardship Relief	Disaster Hardship Relief
		In-Patient	Out-Patient			
(1) Number of Persons (Households)						
		(Person-day)		(Working-time)		
1968③	30,793	318,070	50,847	176,733	713	8,490
2004	48,064	-	1,357	862,074	1,987	166
2005	47,627	-	1,461	863,676	1,608	7
(2) Amount (NT\$1,000)						
1968③	4,345	17,342		7,069	108	10,099
2004	340,142	-	3,496	431,037	8,744	16,980
2005	348,271	-	4,033	431,838	8,851	3,480

Notes : ① Excluding expenditures for psychosis hospitals since July, 1998.

② Data for fiscal year.

③ The disaster hardship relief data referred to figure for 1969.

Source : Department of Social Welfare.

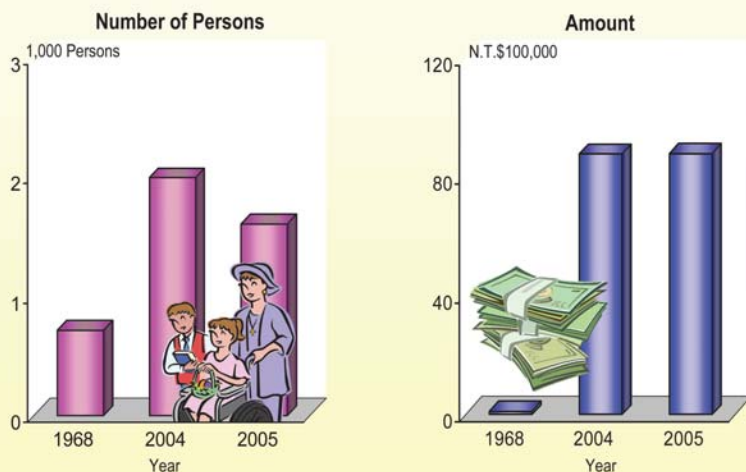
In view that illness is the root of poverty, the City Government signed contracts with public and private medical institutions to provide free medication services for poor citizens. The City Government, in fact, subsidized all of the expenses. In 2005, covered under the program were 1,461 outpatients involving NT\$4.03 million of medication expenditure.

Under a "work-for-pay" relief program, the City Government helps poor citizens to stand on their own feet by engaging in temporary jobs. Department of Environmental Protection arranges street cleaning jobs for the poor, with the half-daily wage being NT\$500 per person. In FY2005 the program offered 863,676 working times of job and paid a total wage of NT\$431.84 million.

For citizens suffering sudden disasters, the City Government adopts temporary emergency relief measures. Under the program, a registered poor citizen will be granted with timely relief assistance whenever he runs into hardship in living due to family accidents. This could prevent the breakout of social problems. The relief assistance of this type can be classified into four categories, i.e., emergency hardship relief for ordinary citizens, special relief for the poor, emergency hardship relief for military reservists and relief for natural disasters.

The emergency hardship relief for ordinary citizens includes financial assistance for daily living, sickness and injury, giving birth to baby, and traveling expenses. In 2005 the program offered 1,608 people (households) with financial assistance amounting to NT\$8.85 million. In addition, a citizen may apply for relief assistance when a heavy loss due to any natural disaster. These programs have effectively prevented low-income families from running into hardship when they suffer any emergency difficulty or disaster. This has produced preventive effect on appearance and expansion of the poor.

Citizen Emergency in Taipei City



32. Social Welfare

With a growing number of women participating in the employment and with the prevalence of small family, some families could not take care of their infants or little children, creating more and more demand for child day-care services. To meet such a social requirement, the City Government has devoted many of its resources to setting up city child day-care institutions on one hand and encouraged the private sector to operate child day-care services. According to statistics, since the City(s) upgrading to a municipality, the number of child day-care centers and the number of children accommodated have been rising year by year. By the end of 2005, the number of centers reached 608 taking care of 35,305 children. Also, the number of orphanages and orphans drastically dropped from 15 institutions and 2,216 persons in 1971 to 8 institutions and 293 persons by the end of 2005.

By the end of 2005, there were 5 caring organizations in Taipei: Guangci Care Home, Haoran Senior Citizens Home, and Senior Citizens Home, Private Aiai Relief Institution, and Renai Home Care, taking care of unattended and lonely elderly and other non-economic reasons housed older people. To take a good care of the old aged population, 191 nursing organizations were in operation, housing 5,461 senior citizens by the end of 2005. The ratio of senior citizens taken care was 0.42%.

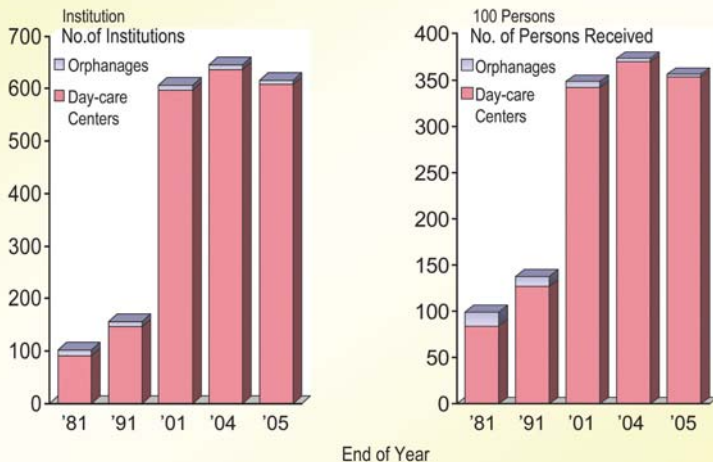
Social Welfare Institutions and Citizens Accommodated in Taipei City

End of Year	Child Day-care Center		Orphanages		Caring and Nursing Organizations ①		Ratio of Children Taken Care (%)	Ratio of Senior Citizens Taken Care (%)
	No. of Institutions	No. of Persons Housed	No. of Institutions	No. of Persons Housed	No. of Institutions	No. of Persons Housed		
1968	14	2,484	1	221	...	0.59
1971	15	2,216	2	1,127	...	2.35
1981	91	8,378	12	1,554	2	1,902	3.22	1.87
1986	133	10,745	12	1,415	4	2,036	4.15	1.47
1991	146	12,677	11	1,066	4	2,261	5.48	1.19
1996	251	18,965	11	830	11	2,055	9.22	0.85
2001	597	34,155	10	681	208	4,456	17.34	0.54
2004	637	37,007	9	320	206	5,469	22.62	0.47
2005	608	35,305	8	293	196	5,461	23.06	0.42

Note : ①Excluding Nursing Organizations before 1996.

Source : Department of Social Welfare.

Social Welfare Institutions in Taipei City



Seniors Service Praise Activity



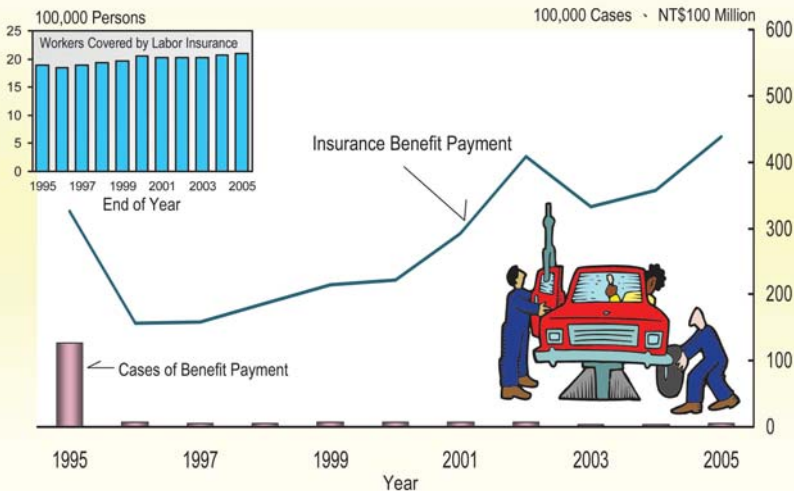
33. Labor Welfare

To ensure labor welfare in today's society where social structure changes rapidly, labor awareness increases, and labor issues become complex, the City Government established the Department of Labor on February 15, 1988. Department of Labor is responsible for providing job training and placement services, and labor affairs such as providing assistance for independent operations of industrial associations and labor unions; creating the labor pension contingency supervisory committee and the management-labor collaboration system; actively negotiate conflicts in the labor and capital, protect laborers' basic rights, establishing the labor education system, enhancing labor insurance, aids for occupational accidents, consulting for foreign laborers, and recreation management; setting up a fund for assisting laborers in application for housing loans; strengthening the care for minority labor; helping the employment of the physically and mentally disabled; promoting gender equality and prevention from employment discrimination, plan "Labor Cultural Park".

Bureau of Labor Insurance, subordinated to Council of Labor Affairs, Executive Yuan, is fully in charge of labor insurance in the City. The statistics for previous years showed an annual increase in the number of insured groups and insured individuals. The labor insurance business slightly shrank only in 1995 when the national health insurance kicked off. The number of insured groups increased from 10,058 by the end of 1980 to 99,561 by the end of 2005. The number of insured individual increased from 542,893 by the end of 1980 to 2,070,655 by the end of 1994, dropped to 1,885,929 by the end of 1995, and rebound to 2,100,589 by the end of 2005.

The increased number of insured individuals and the rising average wage for insurance resulted in the increase in premium income from NT\$2.3 billion in 1980 to NT\$41.3 billion in 2005. However, payment significantly dropped in terms of number of cases and amount since part of labor outpatient and inpatient medical expenses is covered by Bureau of National Health Insurance following the kick-off of the national health insurance in 1995. The number of cases for labor insurance payment increased from 4,243,621 in 1980 to 27,561,781 in 1994 and was 123,035 in 2005. The amount of payment increased from NT\$1,758.34 million in 1980 to NT\$32,471.01 million in 1995 and was NT\$43,763.98 million in 2005.

Situation of Labor Insurance in Taipei City



34. Job Placement Services

Job placement is a direct service for the citizens provided by the government. People who want to get a job and have the job skills and the hiring organizations can register in the employment counseling office of governmental institutions. The government helps to introduce one another to achieve the objective of employment counseling. In addition to the promotion of the "single-registration-full-service", multi-city employment service, the website of Taipei city(s employees, and telephone service centers, we actively carry out the plan of "the integration of choosing, training, caring and employing", the lay-off announcement system, and make active contacts to provide assistance and increase the employment skills and opportunities provide to the public.

Job opportunities are increasing as industry and commerce is flourishing since the reorganization of Taipei City, resulting to the drastic growth in both job-applicants and job-openings recorded at Job Placement Center. The total number was 4,769 for job-applicants and 10,209 for job-openings in 1968. In 2005, the number was up to 47,715 for the former, a 10.0-time and 67,756 for the latter, a 6.6-time increase compared to those of 1968.

Statistics shows that job openings outnumbered job applicants by far in all the years except 1999 when the latter outnumbered the former for the first time. As for the applicants placed rate through the referral by placement agencies, since 1982, the ratio of applicants placed (the ratio of placements to total number of job applicants) was below 50.00% in all the years except 1989 when the rate was 50.73% and was 35.99% in 2005. The reasons for unsuccessful referral include inconsistency in requirements between supply and demand, or inconsistency in age, skill, expected payment or working hours.

To provide training for those who want to learn professional skills, the city has set up Job Training Center for organizing a variety of job training such as car repair, computer repair, software application, web page design, tourism and hotel management etc. The total number of trainees in 2005 was 1,795. The job training is a great help for job placement.

Job Applicants, Job Openings and Placements in Taipei City ①

Year	Number of Applicants	Number of Openings	Number of Placements②	Number of Openings Filled②	Ratio of No. of Openings to Applicants	Ratio of Applicants Placed (%)
1968	4,769	10,209	3,002		2.14	62.95
1971	16,803	23,006	6,339		1.37	37.73
1981	14,924	40,364	10,469		2.70	70.15
1986	30,143	67,585	11,649		2.77	44.93
1991	21,715	69,988	8,141		3.71	40.82
1996	18,162	30,508	3,643		1.96	18.54
2001	58,636	59,109	11,059		1.06	19.41
2004	51,579	61,951	15,208	14,022	1.29	31.72
2005	47,715	67,756	17,171	26,573	1.42	35.99

Notes : ①From May 2004 onward, number of employees included number of placements and number of openings filled.

Source : Department of Labor.

35. Medical Facilities

Public health and care is closely linked to the citizens. The citizens with increased incomes and education level become more demanding for medical facilities such as hospitals and clinics. The City Government has spared no efforts in promoting expansion and improvement for management of hospitals and clinics since its re-organization in order to provide the citizens with better medical services.

The City had 36 hospitals and 1,400 clinics by the end of 1968. By the end of 2005, there were 41 hospitals and 2,793 clinics, including 3 municipal hospitals, i.e. Taipei City Hospital, Wanfang Hospital and Guandu Hospital. Taipei City Hospital consists 9 branches, i.e. Renai Branch, Zhongxing Branch, Zhonghixiao Branch, Yangming Branch, Branch for Women and Children, Heping Branch, Branch for Chinese Medicine, Songde Branch and Branch for Disease Control and Prevention, as well as several subsidiary clinics. To meet the actual needs of the citizens, hospitals are expanded or built each year. By the end of 2005, the number of general beds achieved 15,100 with an average of 58 beds for every 10,000 persons.

Most medical facilities cluster in the older city area. In early days, there were only a small number of doctors and the quality of medical service was poor for all District Health Centers. To strengthen and expand medical services for the citizens, the national health insurance program was implemented and the transfer system was put in practice in compliance with the central medical network program. The outpatient service at all the District Health Centers has been adopted by municipal hospitals since 1997 and handled by special doctors of at least the attending level from municipal or teaching hospitals to strengthen community healthcare activities, to effect household health management and to provide the citizens with medical services of higher quality.

Public and Private Medical Facilities in Taipei City

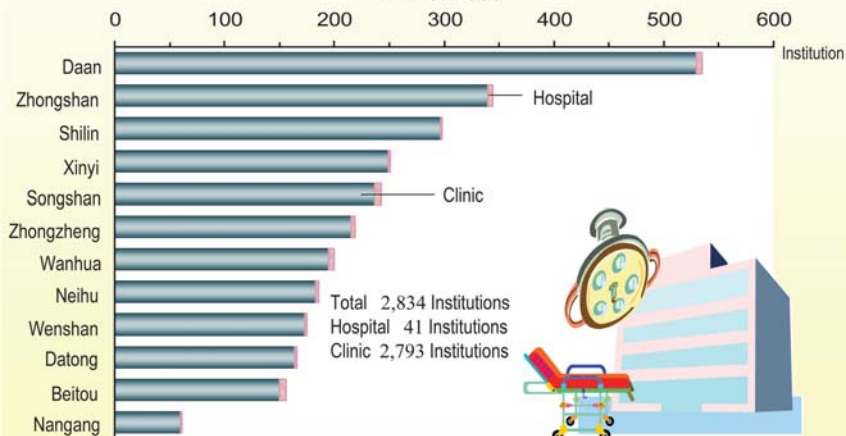
End of Year	Hospitals		Clinics		Ordinary Hospital Beds ①		
	Total	Municipal ②	Total	Municipal	Total	Municipal	Beds/10,000 Persons
1968	36	6	1,400	16
1971	62	8	1,232	17
1981	94	8	1,907	18	8,927	...	39
1991	79	9	2,416	14	13,091	...	48
1996	65	8	2,636	18	14,677	2,831	56
2001	53	11	2,580	12	14,972	3,709	57
2004	52	11	2,762	15	15,758	3,650	60
2005	41	3	2,793	16	15,100	3,389	58

Notes : ①Excluding other special beds for intensive care, observation, and infancy.

②On January 1, 2005, 9 municipal hospitals and Venereal Disease Control Center were merged into one unit, Taipei City Hospital.

Source : Department of Health.

Distribution of Medical Institutions in Taipei City End of 2005



Disease Prevention and Propaganda



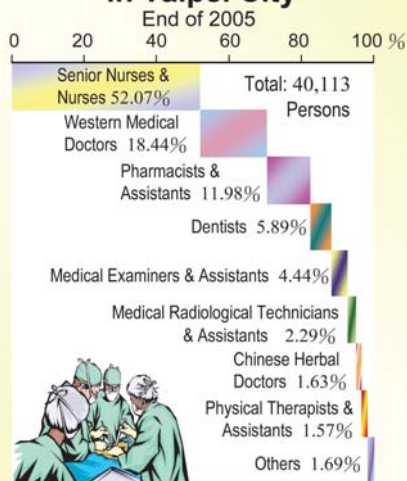
36. Medical Personnel

Medical Personnel are the backbone of medical facilities. The quality and quantity of medical staffs can affect the level of entire medical services.

By the end of 2005, the City had 10,412 medical doctors at qualified public and private hospitals and clinics, a 4.0-time increase amounted for 8,325 in the last 37 years compared to 2,087 by the end of 1968. The number of nursing personnel surged 16.4 folds from 1,201 in 1968 to 20,903 in 2005. The number of medical specialists also experienced an increased about 8.2 times from 818 in 1968 to 7,509 in 2005.

To compare the number of medical personnel in the City to the population, there was only an average of 13 medical doctors and 8 nursing personnel per 10,000 persons in 1968 and an average of 40 medical doctors and 80 nursing personnel per 10,000 persons in 2005, showing a considerable increase compared to 37 years ago.

Medical Personnel in Taipei City



Medical Personnel in Taipei City

Item	End of 2005		End of 2004 ①		End of 1968	
	No. of Medical Personnel	Medical Personnel per 10,000 Persons	No. of Medical Personnel	Medical Personnel per 10,000 Persons	No. of Medical Personnel	Medical Personnel per 10,000 Persons
Total	40,113	153	38,306	146	4,106	26
Medical Doctors	10,412	40	10,159	39	2,087	13
Western Medical Doctors	7,397	28	7,262	28	1,510	9
Chinese Herbal Doctors	652	2	645	2	348	2
Dentists	2,363	9	2,252	9	229	2
Nursing Personnel	20,903	80	19,988	76	1,201	8
Senior Nurses and Nurses	20,887	80	19,972	76	919	6
Midwives	16	0	16	0	282	2
Medical Specialists	7,509	29	7,193	27	818	5
Pharmacists and Assistants	4,806	18	4,687	18	786	5
Prosthetics Assistants	3	0	4	0	32	0
Medical Examiners and Assistants	1,783	7	1,633	6
Medical Radiological Technicians and Assistants	917	4	869	3
Nutritionists	414	1	200	1
Physical Therapists (Assistants)	630	2	552	2
Occupational Therapists (Assistants)	245	1	214	1

Source : Department of Health.

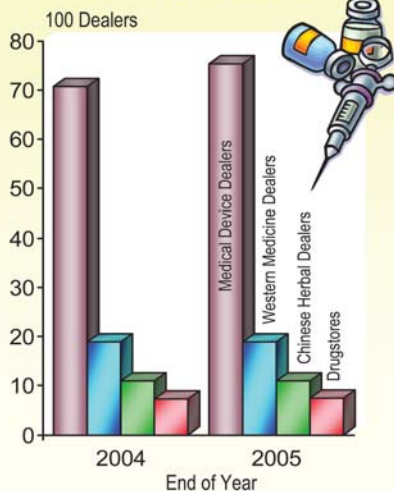
37. Drug Management

Upon the reorganization of the City at the end of 1968, there were 1,082 western medicine dealers and 527 Chinese herbal ones in Taipei City. Drug management finally went on the right track in 1970 when the business license for a pharmaceutical firm was issued by the health agencies.

At the end of 2005, the City had a total of 11,274 licensed pharmaceutical firms, including 1,893 western medicine dealers, 1,102 Chinese herbal ones, 7,525 medical device dealers, and 754 drugstores. Since 1994, drugstores have been excluded from western medicine dealers for separate statistics. Compared to the previous year, medical device dealers and drugstores increased 6.6% and 2.4%, respectively, but Chinese herbal dealers and western medicine dealers decreased 0.3% and 0.2%, respectively.

The distribution of pharmaceutical firms by district showed that Daan District accounted for the largest number, or 1,887 dealers, Zhongshan District in the second place for 1,822, and Nangang District, the last in the list for only 282.

Pharmaceutical Firms in Taipei City



Pharmaceutical Firms in Taipei City

End of Year & District	Total	Western Medicine Dealers	Chinese Herbal Dealers	Drugstores ①	Medical Device Dealers
1968 ②	...	1,082	527
2001	10,181	2,000	1,154	637	6,390
2004	10,799	1,897	1,105	736	7,061
2005	11,274	1,893	1,102	754	7,525
Songshan	1,248	258	61	57	872
Xinyi	956	147	80	79	650
Daan	1,887	347	98	87	1,355
Zhongshan	1,822	366	109	86	1,261
Zhongzheng	1,105	173	75	59	798
Datong	882	138	283	36	425
Wanhua	584	97	98	57	332
Wenshan	482	68	45	61	308
Nangang	282	43	24	25	190
Neihu	738	102	56	57	523
Shilin	806	103	96	80	527
Beitou	482	51	77	70	284

Notes : ①Since 1994, drugstores have been excluded from western medicine dispensaries for separate statistics.

②There were 90 cosmetics manufacturers and other medicine dealers by the end of 1968.

Source : Department of Health.

38. Environmental Protection

To build Taipei a modern city, to keep it clean, to reinforce protection from public nuisance, and to keep our citizens in healthy condition is something on the top priority of the municipal agenda. Since the City was reorganized into municipality, laws and regulations have been amended, and a specialized agency has been set up to take charge of all environmental cleaning jobs, such as pollution control for air and water, control of unpleasant noise, environmental sterilization, and disposition of human manure and garbage.

Air pollution is a by-product of the industrial development. To control the air pollution, factories producing severe pollutants have been requested to make improvement; otherwise, they are subject to continual heavy penalty. Assistance has been provided for them to relocate somewhere else or make improvement on the spot. In 2005, such assistance was granted to 14,427 manufacturers. To effectively reduce air pollution caused by particles exhausted by mobile vehicles, the exhaust of automobiles and motorcycles were under control and suppression. The purposes were to prompt bus operators to strengthen their bus maintenance and ensure drivers proper driving operation. Particle substances mainly cause the air pollution in this city. In 2005 the monthly average dustfall totaled 8.8 metric tons per square kilometer.

The number of mining fields and manufacturing factories put under close watch for their release of polluted water has been declining over the years in the past because operators changed their operation process or relocated their facilities elsewhere. In 2005 assistance was provided for 28 establishments to do improvement. Factories which were listed as special or which consumed a large amount of water were put under key-point inspection. A total of 29 cases of raids in this regard were launched in 2005. Water quality tests have been reinforced for the rivers flowing through this city. A total of 3,168 cases of the tests were done in 2005.

In order to promote resources recycling, since July 1, 2000, garbage processing fees has been levied for each bag of dumped waste. The total garbage processed in 2005 was 537,539 metric tons, showing a decrease of 869,227 metric tons at 61.79% compared to 1,406,766 metric tons in 1999, with the average of daily handling of 1,473 metric tons. In average, each person produces 0.56 kilograms of garbage per day. The total garbage recycled (including the amount collected by the recycling industries) in 2005 was 327,437 metric tons, showing an increase of 40,282 metric tons at 14.03% compared to 287,155 metric tons in 2004. Organic Garbage Recycling has been fully put into practice on December 26, 2003. The amount of recycled kitchen-waste of the year 2005 was 69,598 metric tons, showing an increase of 27,488 metric tons at 65.28% compared to 42,110 metric tons in 2004.

Disposition of Garbage and Manure in Taipei City

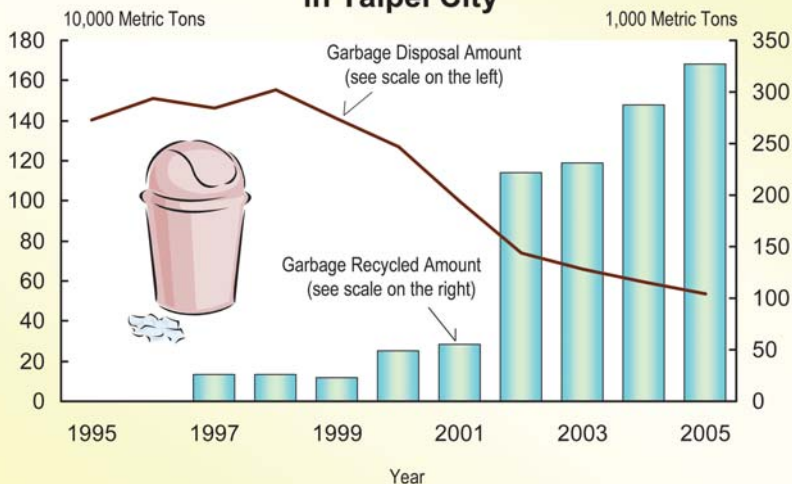
Year	Garbage			Amount of Kitchen Waste Recycled (metric ton)	Amount of Garbage Recycled (metric ton)
	Cleaning Workers ^① (person)	Amount of Garbage (metric ton) ^②	Per Capita Daily Amount (kg)		
1968	1,703	311,216	0.53
1971	1,940	421,878	0.71
1981	3,243	755,565	1.84
1986	3,846	979,781	1.06
1991	4,225	1,321,614	1.33
1996	6,773	1,509,597	1.57
2001	6,076	994,312	1.03	...	① 55,082
2004	7,091	592,464	0.62	42,110	① 287,155
2005	6,991	537,539	0.56	69,598	327,437

Notes : ① Year-end data.

② Kitchen waste recycling has been put into practice in the entire city since December 26, 2003.

Source : Department of Environmental Protection.

Garbage and Manure Disposal Amount in Taipei City



Results of Water Pollution Tests in Taipei City

Year	PH Value			Biochemical Oxygen Demand (mg/L)			Suspended Solids (mg/L)			Coliform Group Density (CFU/100ml) ①		
	Keelung River	Xindian River	Danshui River	Keelung River	Xindian River	Danshui River	Keelung River	Xindian River	Danshui River	Keelung River	Xindian River	Danshui River
1974	7.1	7.0	7.3	6	7	2	75×10^4	21×10^3	43×10^3
1981	7.3	7.3	7.0	17	13	27	46	68	226	63×10^5	24×10^6	60×10^6
1986	7.2	7.2	7.0	12	14	17	74	49	54	12×10^6	28×10^5	54×10^5
1991	7.5	7.5	7.0	13	11	28	40	61	51	21×10^7	40×10^6	15×10^6
1996	7.2	7.3	7.2	10	9	13	36	51	43	32×10^3	15×10^3	22×10^3
2001	7.0	6.8	6.8	7	5	6	52	80	35	66×10^4	52×10^4	83×10^4
2004	7.2	7.6	7.5	7	6	11	33	123	55	64×10^4	39×10^4	40×10^4
2005	6.8	7.1	6.9	6	3	7	47	122	101	40×10^4	23×10^4	57×10^4

Note : ①The unit during 1974 to 1992 was "possible uttermost/100ml".

Source : Department of Environmental Protection.

39. Police Affairs

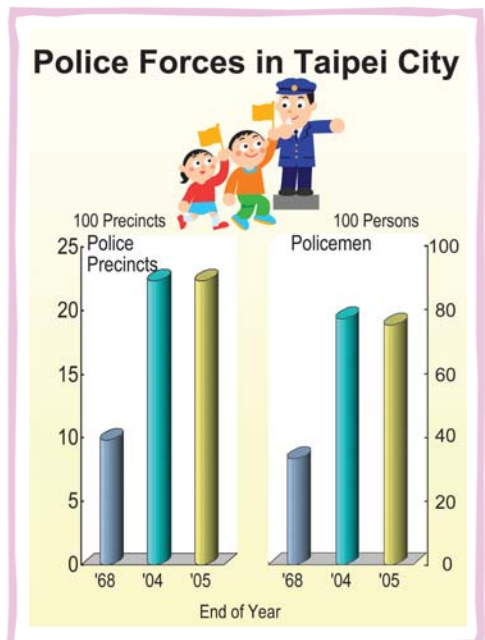
It is a principal duty of the government to maintain the security of the society and ensure the safety of our citizens lives and properties. It is also a pre-requisite requirement to protect the happy lives and jobs of the public. For Taipei City where the Central Government is located, the security of the society is even more important. At present, major agenda for the police administration are as follow: to continue cracking down on crime, gunrunning, drug, burglary and violence; to reinforce clamping down on prostitution; check thoroughly the tight corners of public security and strengthen patrol; to enforce the regulations of youth protection; reinforce campus security, to expand the scope of propaganda on precautions against crime: to activate the system of "public security feng-shui expert" to assist the public with residential security and theft-prevention; assist establishment of patrol teams; plan "Guardian Corridor"; hold community security meetings. Also, a community safeguard network and self-defense system has been established that can schedule patrol service when no one at home. Moreover, people can get many kind of security information through the City(s) safety networks.

By the end of 1968, the population in the City was only 1.60 million; by the end of 2005 they rose to 2.62 million. Under drastic changes, the law enforcement facilities in the City should increase correspondingly. By the end of 2005, the number of precincts rose to 2,230, the number of policeman positions staffed was 7,504. The number of policemen per 10,000 persons was 28.7 and the population safeguarded by a policeman was 349 on the average.

Police Forces in Taipei City

End of Year	No. of Precincts	No. of Policemen ①
1968	986	3,330
1971	1,028	3,657
1981	1,320	5,912
1986	1,660	7,047
1991	1,783	7,402
1996	2,160	7,566
2001	2,171	7,895
2004	2,230	7,703
2005	2,230	7,504

Note : ①It was the no. of policeman positions, including administrative staff. Since 1991, it was the no. of policeman positions staffed.
Source : Taipei City Police Department.



The police force and its equipment have been constantly expanded. Programs have been launched to educate our citizens to observe the laws. However, in a highly populated city, excessive population density, busy industrial activity and increasingly complicated security environment have jointly led to repetitive criminal cases. In addition to promoting the concept of obeying to law and order, the City Government endeavors to reinforce the police to fight crimes.

In 2005 a total of 58,250 criminal cases took place in the City. Most of the criminal cases were concerning theft and larceny, which accounted for 45.48% of total criminal cases. The average of crime commitment was 2,224 cases per 100,000 persons in 2005, and the amount of cracking criminal cases was 47,721 at the same period. The clearance rate of cracking cases was 81.92%, and increased by 7.52 percentage point as compared with 74.40% of 2004.

In 2005 a total of 754 cases of economic crimes took place, which amounted to NT\$1,511 million, with the average of 29 cases per 100,000 persons. Analyzing the cases, infringements upon I.P.R. topped the lists, occupying 79.44%, and against the Monetary Law second, 12.60%. Regarding valued amount, infringements upon I.P.R. amounted the most, occupying 78.95%; against the Monetary Law second, 20.22%.

The Police Security Offense Penalty Law was rescinded on July 1, 1991. It was replaced by the Maintaining Public Order Law. There were 1,217 cases with 1,591 persons against the Maintaining Public Order Law in 2005. Most of the ones against the law were those who offend against public order and who undermine public morality.

Criminal Cases Handled by Police Institutions in Taipei City ①

Year	Criminal Cases②			Economic Crimes		Violation of Public Order③④	
	No. of Cases	Cases Cleared	Clearance Rate(%)	No. of Cases	Amount (NT\$1,000)	No. of Cases	Involved Persons
1968	7,955	6,198	77.91	2,122	15,149	183,555	195,275
1971	8,056	5,852	72.64	1,643	8,690	38,879	52,067
1981	14,183	11,424	80.55	1,347	2,258,445	18,236	33,684
1986	21,372	17,557	82.15	2,913	80,795	10,701	21,052
1991	23,841	19,531	81.92	2,844	58,412	3,425	5,908
1996	67,463	40,507	60.04	1,919	128,767	2,219	3,833
2001	56,635	40,775	72.00	5,291	401,238	2,496	3,044
2004	58,782	43,735	74.40	689	530,319	1,283	1,445
2005	58,250	47,721	81.92	754	1,511,113	1,217	1,591

Notes : ①The figures in this table are those accepted by Taipei City Police Department.

②Since 1996, the data contained motorcycle-thefts.

③Including violation of traffic regulation in 1968.

④Referring to violation of the Police Security Offense Penalty Law prior to July 1, 1991 and to violation of the Social Order Maintenance Law thereafter.

Source : Taipei City Police Department.

40. Fire Fighting

As the city becomes more densely populated and buildings are going high-rise, underground, massive, and diversified in use, fire fighting becomes increasingly important and setup of modern fire fighting equipment more urgent. To meet environmental needs, the City Government, officially established Fire Department in 1995 to further improve the function of fire protection and disaster relief. By the end of 2005, there were 2,943 firemen and 551 fire engines.

To protect life and property safety, in addition to focusing on public safety, secure the fire prevention system, and improve disaster relief, rescue and paramedic skills, it is also vital to promote fire prevention, education in fire prevention, and rigorous inspection of fire safety equipment. Pioneer the system of "fire-control fengshui expert". Instead of passive promotions, we will actively interact with the public. We have established the Golden Phoenix Guarding Group in 1999 to increase the protection and services of civil security and have moved forward to the objective of establishing a "safe city".

In 2005, the number of fire amounted to 421 at a rate of 1.2 per day with 22 dead/injured and property losses up NT\$23.77 million. For the causes to fire, short circuit accounting for 33.02% in the first place, arson for 15.91% in the second, and smoking for 13.06% in the third. For breakout locations, bedrooms accounted for 13.78% in the first place. For breakout time, the period from 15 to 18 pm accounted for 15.20% in the first place.

Losses from Fire Accidents and Fire Safety Equipment in Taipei City

Year	Cases of Fire Accidents (case) ①	Estimated Value of Property Losses (NT\$1,000)	Death & Injury (person) ①		Fire-fighting Force & Facilities ②	
			Death	Injury	Firemen (person) ③	Fire Engines (vehicle) ④
1968	926	49,598	22	89	1,801	92
1971	851	51,739	25	46	2,090	79
1981	585	35,142	35	105	2,319	321
1986	680	48,828	19	61	2,081	387
1991	874	193,361	54	262	1,738	485
1996	693	61,085	17	166	1,895	434
2001	814	74,928	16	74	2,504	447
2004	552	34,779	10	33	2,988	498
2005	421	23,771	5	17	2,943	551

Notes : ①The statistics of fire for 1995 to 1997 were not performed in according to the "fire" identification standards stipulated by National Fire Fighting Administration Ministry of the Interior and excluded no-casualty explosion, self-burning, and other no-casualty or damage minor cases which were included in the statistics for general services. In addition, deaths from self-burning, arson, and within 24 hours after hospitalization were not included in the death toll.

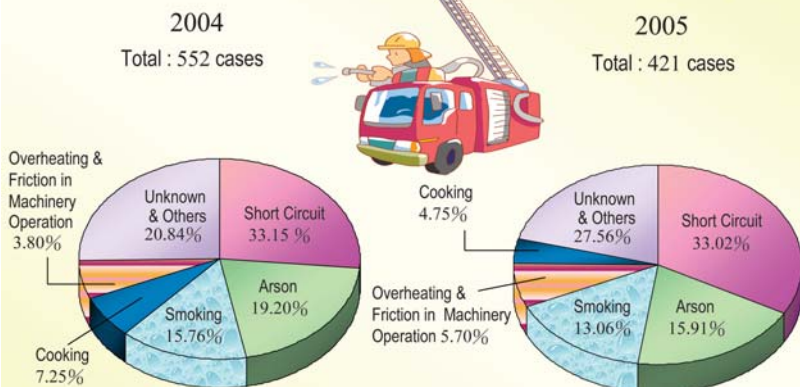
②Year-end data.

③Excluding staffs not actually engaged in fire service in of Volunteer Firefighter Corps since the end of 1991.

④Including fire engines, rescue cars, working cars, ambulances and lifeboats.

Source : Fire Department.

Causes for Fire Accidents in Taipei City



Fire-control Fengshui Expert



41. Family Income and Expenditure

The citizens are enjoying increased incomes and living standards following the rapid economic growth and prospering industrial and commercial activities since the reorganization of Taipei City.

The Report on the Family Income and Expenditure Survey indicates that the average current receipts per household has increased from NT\$76,579 in 1971 to NT\$1,583,262 in 2004, showing a 20-time increase at an annual rate about 9.61%. The average current receipts per household actually increased 3 times in 2004 compared to 1971 after elimination of currency fluctuation and offset with consumer price index.

Compensation of employees remains the main source for family current receipts. The 2004 statistics showed that of the total current receipts compensation of employees stood at 55.76% in the first place, followed by property income at 20.22%, current transfer receipts at 13.97%, entrepreneurial income at 10.02%, and miscellaneous receipts at 0.03%.

The Engel's Coefficient means the ratio of food and beverage expenses to consumption expenditures. Also the Engel's Law indicates that the Engel's Coefficient is higher, the living standard is lower. According to the Report on the Family Income and Expenditure Survey, the Engel's

Average Family Income and Expenditure per Household in Taipei

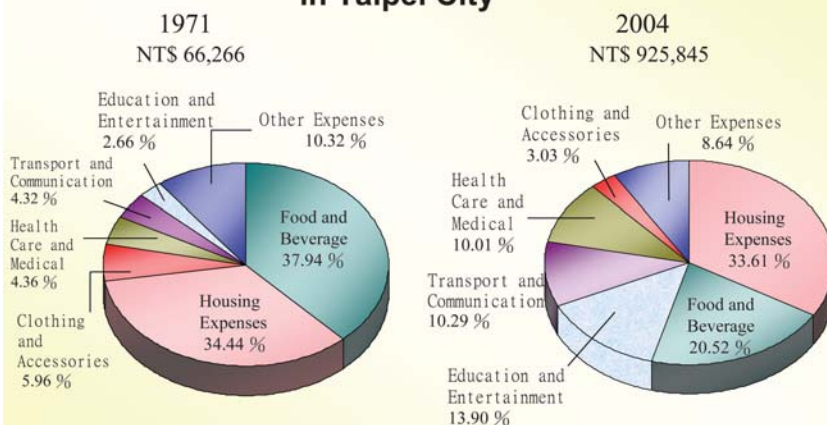
Year	Current Receipts (NT\$)	Disposable Income (NT\$) (1)	Current Expenditures (NT\$)	Consumption Expenditures (NT\$)(2)	Engel's Coefficient (%)
1971	76,579	73,620	69,224	66,266	37.94
1981	384,513	334,428	295,323	259,190	32.46
1986	525,025	434,098	406,536	337,145	28.69
1991	953,309	764,325	685,157	560,319	23.83
1996	1,443,102	1,137,761	1,096,931	867,384	22.80
2001	1,596,257	1,217,932	1,243,471	955,897	22.24
2003	1,593,474	1,232,396	1,183,587	914,067	21.79
2004	1,583,262	1,225,096	1,188,928	925,845	20.52

Source : "Report on the Family Income and Expenditure Survey" conducted by Department of Budget, Accounting and Statistics.

Coefficient per household was 37.94% in 1971 and later decreased by 20.52% in 2004 as income increased.

For family consumption, except for the gradual decrease in food and beverage by 20.52% in 2004, housing expenses decreased from 34.44% in 1971 to 33.61% in 2004, clothing and accessories from 5.96% to 3.03%, other expenses from 10.32% to 8.64%. When comparing with the spending on the same items for the year 2004, three of them indicated an increase. Such as transport and communication increased from 4.32% to 10.29%, health care and medical from 4.36% to 10.01%, education and entertainment from 2.66% to 13.90%. On a whole, family consumption still circles around basic needs such as food & beverage, housing. However, consumption items with lower market flexibility (such as food and beverage) decrease while those with higher market flexibility (such as rent and water charges, transport and communication, health care and medical, education and entertainment etc.) increases in terms of ratio as family income increase. This complies with the Engel's Law, showing that the living standards of the Citizens have moved to a higher level.

Average Consumption Expenditure per Household in Taipei City



42. Price Index

The price index is an important economic indicator used for measuring fluctuation in commodity price. The rise and fall in the index shows the up and down in price. The index is in principle used as a parameter for the followings: (1) measuring the purchasing power of a currency; (2) drawing up economic and financial policies as well as regulating supply and demand of essential goods; (3) revaluating assets, settling long-term debts, and deflating land prices; (4) adjusting pay rolls of public and private organizations; and (5) calculating national income deflators and making commercial forecasts. Consequently, the price index is one of the key indicators showing social-economic performance.

Since January 1968, the City Government started to compile and publish, on a monthly basis, the consumer price indices and family service price indices in Taipei City for reference. The two sets of indices showed relatively high increases in 1973, 1974, 1980, and 1981 while they stayed relatively stable in recent years. By comparing the consumer price index per year with 2001 as the benchmark, the index surged 40.47% to the greatest extent for 1974, followed by 19.05% for 1980. The index 104.34 for 2005 saw an increase of 2.38% compared to 101.91 for 2004. The family service prices index increased 28.20% to the greatest extent for 1974, followed by 24.83% for 1980. The index 101.84 for 2005 saw an increase of 0.99% compared to 100.84 for 2004. The construction cost price index began for compilation and publication since 1981. With 2001 as the benchmark, the index was 120.27 for 2005, saw an increase of 0.67% compared to 119.47 for 2004.

Fluctuation in Price Index in Taipei City

Basic Period: 2001=100

Year	Consumer Price		Family Service Price		Construction Cost Price	
	General Index	Change (%)	General Index	Change (%)	General Index	Change (%)
1981	59.51	16.69	42.85	24.78	60.24	--
1986	64.16	0.96	51.90	2.35	61.19	0.74
1991	76.61	5.68	70.38	8.16	85.26	4.56
1996	94.28	3.67	90.39	4.42	99.12	-0.23
2000	99.58	1.59	98.59	2.57	100.92	-0.64
2001	100.00	0.42	100.00	1.43	100.00	-0.91
2002	99.72	-0.28	99.75	-0.25	101.33	1.33
2003	99.58	-0.14	99.72	-0.03	105.54	4.15
2004	101.91	2.34	100.84	1.12	119.47	13.20
2005	104.34	2.38	101.84	0.99	120.27	0.67

Source : "Price Surveys" conducted by Department of Budget, Accounting and Statistics.

Movement of price indices for major categories of consumer goods in 2005 was as follows:

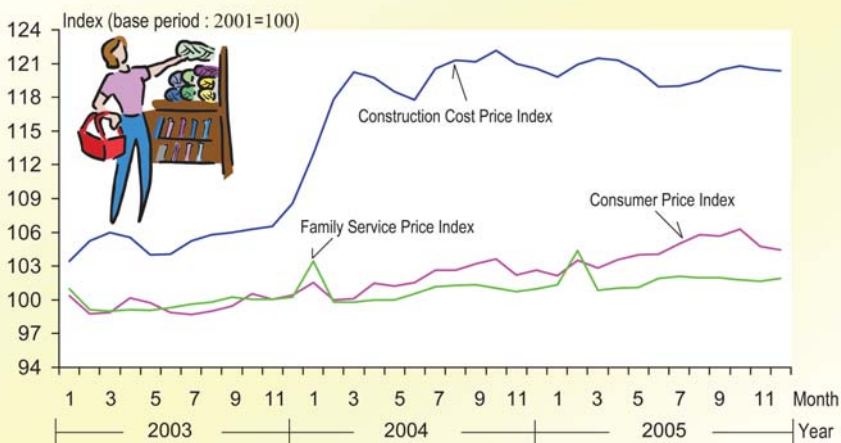
Consumer Price Indices in Taipei City

Basic Period : 2001=100

Index	Weight (%)	2005	2004	Change (%)
General Index	1,000.00	104.34	101.91	2.38
Food	228.28	112.97	105.54	7.04
Clothing	45.09	107.32	107.36	-0.04
Housing	345.34	96.60	96.11	0.51
Transportation & Communication	104.01	104.11	102.53	1.54
Medicines & Medical Care	36.52	107.88	105.81	1.96
Education & Entertainment	174.21	108.08	106.32	1.66
Miscellaneous	66.55	99.87	99.53	0.34

Source : "Price Surveys" conducted by Department of Budget, Accounting and Statistics.

Movement of Price Indices in Taipei City



Major Indicators for Living

Year	1. Population and				
	Population Growth Rate			Social Migration Rate ①	Population Density
	Gross Growth Rate	Natural Growth Rate	Social Growth Rate		
Unit	%	%	%	%	person/km ²
1968	51.77	22.01	28.45	283.72	5,896
1971	39.60	20.38	18.45	289.51	6,760
1981	22.77	15.80	6.72	270.48	8,345
1986	26.94	10.36	16.23	388.85	9,475
1991	-0.61	9.53	-10.15	271.51	10,001
1996	-10.44	8.37	-18.87	283.87	9,586
2001	-4.79	5.17	-9.97	196.58	9,690
2004	-1.78	3.10	-4.88	198.29	9,649
2005	-2.32	2.46	-4.79	204.20	9,626

Year	2.Labor and Employment					Ratio of Applicants Placed ④	Ratio of Opening Filled ⑤
	Employment Population per Household②	Manufacturing Employees for Taiwan Area		Ratio of Applicants Placed ④	Ratio of Opening Filled ⑤		
		Monthly Working Hours per Person	Monthly Wage per Person				
Unit	person	hour	Nominal Price	Effective Price③	%	%	
1968	1.73	...	1,232	6,292	62.95	29.41	
1971	1.39	37.73	27.55	
1981	1.36	210	9,565	14,325	70.15	25.94	
1986	1.40	209	13,983	19,964	44.93	16.22	
1991	1.36	202	24,467	30,458	40.82	10.99	
1996	1.33	201	33,911	35,287	18.54	9.47	
2001	1.24	184	38,586	38,586	19.41	18.39	
2004	1.23	191	40,611	40,157	31.72	22.47	
2005	1.22	189	41,751	40,355	35.99	39.22	

Major Indicators for Living

Year	3. Income and Expenditure ①				
	Consumer Price Index	Average Consumption Trend ③	Gini Concentration Coefficient of Disposable Income	Income	
				Ratio of Income Accounted for by Top 20% Households	Ratio of Income Accounted for by Bottom 20% Households
Unit	2001=100	%	—	%	%
1968	17.78	41.4	7.8
1971	20.14	90.91	0.3120	40.1	8.9
1981	59.51	77.50	0.2829	36.4	9.2
1986	64.16	77.67	0.2799	37.6	9.4
1991	76.61	73.31	0.2653	36.0	9.5
1996	94.28	76.24	0.2683	35.5	8.5
2001	100.00	78.49	0.3036	38.1	7.7
2004	101.91	75.57	0.2953	37.3	8.0
2005	104.34

Year	4. Public				
	Juvenile Delinquents per 100,000 Persons	Traffic Accidents per 10,000 Vehicles	Vehicles Traffic Accident Death Tolls Per 10,000 Persons	Cases of Penalty of Traffic Rule Violation Per 10,000 Persons	Fire Accidents
1968	0.8	...	926
1971	219.6	94.3	0.7	971	851
1981	384.8	34.5	0.7	2,054	585
1986	445.5	21.3	0.8	2,456	680
1991	513.2	8.9	0.8	6,848	874
1996	584.0	1.9	0.7	14,531	693
2001	332.5	1.0	0.4	14,807	814
2004	215.3	0.8	0.4	② 9,240	552
2005	204.7	0.5	0.3	9,626	421

Quality in Taipei City (Cont. 1)

4. Public Safety								
Distribution	Policemen Positions Staffed per 10,000 Persons	Police Rule Violation Cases per 100,000 Persons	Criminal Cases per 100,000 Persons			Cleared Rate		
Income Ratio of Top 20% Households to Bottom 20% Households			Total	Burglary and Larceny	Other Crimes	Total	Burglary and Larceny	Other Crimes
times	person	case	case	case	case	%	%	%
5.3	...	11,728.3	508.3	386.4	121.9	77.91	71.18	99.27
4.5	...	2,154.4	446.4	287.9	158.5	72.64	57.71	99.76
3.9	...	812.0	631.6	440.4	191.1	80.55	71.64	101.07
4.0	...	421.1	841.0	536.7	304.3	82.15	74.22	96.13
3.8	27	126.0	876.9	350.6	526.3	81.92	56.94	98.57
4.2	29	84.7	2,575.8	1,976.3	599.5	60.04	50.43	91.75
4.9	30	94.5	2,145.2	1,198.7	946.4	72.00	63.32	82.98
4.7	29	48.9	2,239.5	1,123.2	1,116.3	74.40	77.20	71.59
...	29	46.5	2,223.8	1,011.4	1,212.4	81.92	88.54	76.40

Safety					5. Transportation	
Fire Accident Death Tolls per 10,000 Persons	Fire Accident Injuries per 10,000 Persons	Fire Accidents per 1,000 Households	Firemen per 10,000 Persons	Fire Engines per 10,000 Persons	Automobiles per 1,000 Persons	Motorcycles per 1,000 Persons
person	person	case	person	vehicle	vehicle	vehicle
0.14	0.57	2.70	11.2	0.6	17	47
0.14	0.25	2.21	11.3	0.4	24	62
0.15	0.46	1.02	10.2	1.2	92	179
0.07	0.24	0.99	8.1	1.2	117	244
0.20	0.96	1.07	6.4	1.5	190	233
0.06	0.63	0.82	7.3	1.7	246	308
0.06	0.28	0.91	9.5	1.7	253	368
0.04	0.13	0.60	11.4	1.9	270	388
0.02	0.06	0.45	11.2	2.1	277	394

Major Indicators for Living

Year	5. Transportation				
	Ratio of Private Noncommercial Automobiles ①	Road Surface Area per Person	Road Surface Area per Automobile	Parking Lots per 1,000 Automobiles	City Buses in Operation
Unit	%	m ²	m ²	lot	vehicle
1968	34.41	4.50	260.89	...	607
1971	37.81	5.05	209.62	...	1,295
1981	59.67	6.65	72.44	50	2,701
1986	70.42	6.85	58.64	92	3,250
1991	79.50	6.81	35.89	71	2,891
1996	82.96	7.40	30.10	87	2,916
2001	83.82	7.80	30.77	93	3,359
2004	81.52	7.88	29.16	94	3,666
2005	80.50	7.91	28.52	95	3,805

Year	6. Health				
	Medical Doctors per 10,000 Persons	Medicine Business Firms per 10,000 Persons	Ordinary Hospital Beds per 10,000 Persons	Ambulances per 10,000 Persons ②	Gross Birth Rate ③
Unit	person	establishment	piece	vehicle	‰
1968	13	26.15
1971	12	12	...	0.05	24.13
1981	18	22	39	0.46	19.60
1986	24	26	45	0.40	13.99
1991	29	30	43	0.63	13.44
1996	33	33	51	0.72	13.04
2001	37	39	57	0.60	10.23
2004	④ 39	41	60	0.68	8.44
2005	40	43	58	0.73	8.00

Quality in Taipei City (Cont. 2)

				6. Health		
Transportation of City Buses ②	Passengers Transported per City Bus	Post Offices per 100 Square Meters ③	Mails per Person ④	Medication as % of Consumption Expenditure ①	Medical Institutions per 10,000 Persons	Medical Personnel per 10,000 Persons
million person-km	person	establishment	piece	%	establishment	person
1,994	55	60	87	6.0	9	26
4,626	59	70	108	4.4	7	30
5,810	37	80	176	3.7	9	55
6,371	34	79	231	3.7	9	69
5,586	34	79	272	3.6	9	88
4,766	30	77	356	6.8	10	109
5,297	28	74	527	8.7	10	131
4,994	23	72	500	10.0	11	① 146
4,941	24	71	510	...	11	153

					7. Education		
Gross Death Rate ③	Population Served by a Medical Doctor ④	Outpatients Served By City-owned Medication Institutions per Day	Per Capita Daily Protein Consumption ⑤	Per Capita Daily Calorie Consumption ⑤	School Age Children in School ①	Literacy Rate of Population Aged 15 and Over ②	College-educated Population as % of Total Population Aged 18 and Over ③
%	person	person	gram	large calorie	%	%	%
4.13	769	...	64.9	2,545	98.90	88.72	15.20
3.75	847	...	72.4	2,674	99.02	90.35	16.21
3.81	547	3,606	76.4	2,765	99.77	94.85	24.03
3.63	400	7,441	84.2	2,725	99.80	95.97	25.51
3.90	340	9,703	91.7	2,929	99.89	97.14	28.12
4.67	303	11,032	98.6	3,054	99.95	97.00	30.44
5.05	270	19,122	92.5	2,880	99.93	97.80	38.70
5.34	① 258	20,078	92.1	2,900	100.00	98.73	48.73
5.54	251	17,910	100.00	98.81	50.03

Major Indicators for Living

Year	7. Education				
	Education, Science, and Culture as % of Government Expenditure ④	Primary & Secondary School Students per Class	Primary & Secondary School Students per Teacher	School Teachers per Class	Per Capita Real Government Expenditure for Education, Science and Culture ⑤
Unit	%	person	person	person	NT\$ at 2001 price
1968	21.16	55	33	1.79	1,964
1971	32.50	52	31	1.85	3,555
1981	27.38	46	26	1.85	7,189
1986	28.69	45	25	1.91	9,157
1991	38.60	41	22	1.96	23,903
1996	27.62	36	19	1.92	15,860
2001	29.93	33	16	1.92	16,978
2004	39.31	33	16	1.95	⑥ 19,191
2005	...	33	16	1.95	...

Year	8. Culture and Recreation				
	Video Tape Recorder Diffusion Rate ①	Personal Computer Diffusion Rate ①	Cable Television Diffusion Rate ①	Area of Parks and Green Fields per Person	Self-owned Housing Diffusion Rate
Unit	%	%	%	m ²	%
1968	0.72	...
1971	0.71	...
1981	9.56	1.84	56.36
1986	43.08	6.32	...	2.84	67.92
1991	81.48	23.84	...	3.44	71.20
1996	74.23	41.84	69.00	4.23	76.36
2001	60.89	68.87	82.82	4.80	78.37
2004	40.47	73.31	87.20	4.95	80.49
2005	5.01	...

Quality in Taipei City (Cont. 3)

8. Culture and Recreation						
School Students as % of Total Population	No. of Book-borrowers per 1,000 Persons ①	Library- collected Books per 1,000 Persons ②	Entertainment Expenditure as % of Consumption Expenditure ③	Newspaper Diffusion Rate ③④	Magazine Diffusion Rate ③④	Color TV Sets Diffusion Rate ③④
%	case	volume	%	%	%	%
28.84	860	59.83	2.30	56.75	16.41	57.79
29.68	730	69.66	2.66
28.34	826	148.43	9.20	79.38	15.91	89.02
27.14	2,779	355.90	11.96	77.40	20.36	97.60
26.61	2,394	681.86	14.77	66.00	18.68	99.56
25.86	4,985	1,003.22	15.59	59.70	20.57	99.40
25.62	633	1,342.50	14.50	51.38	22.26	99.40
25.18	726	1,581.99	13.90	40.34	15.46	99.45
25.00	748	1,771.13

9. Living Environment

Housing Rent (Including Imputed Rent) as % of Disposable Income	Living Space per House ①	Sedan Vehicle Diffusion Rate ②	Telephone Diffusion Rate ②	Geysers Diffusion Rate ②	Washing Machine Diffusion Rate ②	Air Conditioner Diffusion Rate ②
%	m ²	%	%	%	%	%
...	91.77	...	9.79	...	5.27	0.87
19.80	103.37
18.27	92.36	12.93	85.33	65.72	86.58	40.58
18.44	98.69	22.76	94.40	86.00	92.56	55.24
20.32	103.40	40.36	98.68	93.76	96.04	80.52
17.07	103.23	50.99	99.16	94.93	96.58	88.06
19.53	102.19	53.31	99.45	96.31	97.66	91.96
19.20	103.14	49.60	98.74	97.10	97.89	93.65
...	103.39

Major Indicators for Living

Year	9. Living				
	Public Market Space per Person	Per Capita Fruit and Vegetable Consumption	Per Capita Tobacco and Wine Consumption	Monthly Electricity Consumption per Household ③	Per Capita Monthly Water Supply
Unit	m ²	kg	NT\$	kwh	liter
1968	0.067	5	...	166.58	9,452
1971	0.075	...	29	224.35	10,370
1981	0.122	18	101	260.05	11,587
1986	0.141	18	103	302.39	13,065
1991	0.159	19	127	461.53	15,435
1996	0.176	19	143	537.49	20,169
2001	0.172	20	173	578.04	23,432
2004	0.182	20	200	599.79	20,608
2005	0.184	19	...	633.33	19,815

Year	9. Living Environment				
	Sulfur Dioxide in the Air	Biochemically Required Oxygen in River Water		Low-income Families as	
		Keelung River	Danshui River	% of Total Households	% of Total Population
Unit	ppm	mg/L		%	%
1968	2.86	3.02
1971	2.42	2.13
1981	0.016	17	27	0.52	0.32
1986	0.010	12	17	0.69	0.40
1991	0.019	13	28	0.68	0.50
1996	0.009	10	13	0.80	0.58
2001	0.004	7	6	1.23	0.94
2004	0.005	7	11	1.73	1.53
2005	0.004	6	7	1.39	1.23

Quality in Taipei City (Cont. End)

Environment

Per Capita Monthly Water Consumption	Per Capita Monthly Fuel Gas Consumption	Per Capita Annual Garbage Production	Daily Garbage Disposal	Ratio of Population Served by Garbage-disposing Service	Monthly Dust Fall	Suspended Particulates
liter	degree	kg	metric ton	%	metric ton/km ²	ug/m ³
6,141	43.42	199	853	0.11
6,795	84.82	234	1,156	0.11	16.8	...
7,931	63.54	336	2,070	0.14	15.3	121.7
9,468	62.22	386	2,684	0.15	16.5	92.1
11,217	53.04	486	3,621	0.16	14.3	75.3
10,854	51.12	576	4,125	0.26	11.8	64.7
11,414	48.38	377	2,724	0.23	11.8	49.7
10,551	46.20	226	1,619	0.27	9.7	51.0
10,696	46.64	205	1,473	0.27	8.8	53.3

10. Social Security

Living Subsidy per Low-income Senior	Free Medical Services for Out-patients of Low-income Citizens	Ratio of Senior Citizens in Nursery Homes ①	Ratio of Children in Baby-sitting Institutions ②	Government Expenditure per Citizen	Serving Medical Institutions per 1,000 Low-income Citizens③	Low-income Outpatients per Serving Medical Institution
NTS at Current price	case	%	%	NTS at 2001 price	establishment	case
-	50,847	0.59	...	9,282	0.58	1,816
-	83,257	2.35	...	10,938	0.82	2,602
-	109,227	1.87	3.22	26,254	3.75	4,045
-	151,923	1.47	4.15	33,168	2.91	5,064
-	91,167	1.19	5.48	61,919	3.48	1,940
5,518	710	0.85	9.22	57,426	1.12	42
5,837	774	0.54	17.34	56,719	0.24	129
5,927	1,357	0.47	22.62	④ 48,822	0.25	136
5,902	1,461	0.42	23.06	...	0.19	244

Sources of Data and Compiling Methods for Major Indicators of Living Quality in Taipei City

1. Population and Households

Sources: "The Statistical Yearbook of Taipei City"; "Abridged Life Tables of Taiwan-Fuchien Area, ROC", published by the Ministry of the Interior.

- ① Social migration rate = $((\text{immigrating population} + \text{emigrating population}) / \text{mid-year population}) \times 1,000$
- ② The life span for 1968 referred to the average life span for Taiwan-Fuchien Area.
- ③ Dependence ratio = $((\text{population under 15 years of age} + \text{population aged 65 and over}) / (\text{population aged between 15 and 65 including 15})) \times 100$

2. Labor and Employment

Sources: "The Statistical Yearbook of Taipei City"; "Monthly Bulletin of Manpower Statistics" & "Monthly Bulletin of Earnings and Productivity Statistics", published by the Directorate-General of Budget, Accounting and Statistics.

- ① Labor participation rate = $(\text{labor force} / \text{civilian population aged 15 and over}) \times 100$
- ② Labor participation rates, total employment rates, employment rates for male, employment rates for female and employment population per household for 1968 referred to the averages for Taiwan Area.
- ③ Effective salary is modified by CPI of Taiwan Area.
- ④ Ratio of applicants placed = $(\text{employment placed} / \text{number of applicants}) \times 100$. From 2004 onward, ratio of applicants placed = $(\text{number of placements} / \text{number of applicants}) \times 100$.
- ⑤ Ratio of openings filled = $(\text{employment placed} / \text{number of openings}) \times 100$. From 2004 onward, ratio of openings filled = $(\text{number of openings filled} / \text{number of openings}) \times 100$.

3. Income and Expenditure

Source: "Family Income and Expenditure Survey in Taipei" published by Taipei City Department of Budget, Accounting and Statistics.

- ① Per capita current receipt, disposable income, consumption expenditure, savings, and income distribution for 1968 were based only on the sample of Taipei City obtained from the Family Income and Expenditure Survey in Taiwan Area.
- ② Effective income and expenditure is modified by CPI of Taipei City for 2001.
- ③ Average consumption trend = $\text{consumption expenditures} / \text{disposable income} \times 100$

4. Public Safety

Source: "The Statistical Yearbook of Taipei City".

5. Transportation

Source: "The Statistical Yearbook of Taipei City"; "Family Income and Expenditure Survey in Taipei" published by Taipei City Department of Budget, Accounting and Statistics.

- ① Ratio of private non-commercial automobiles = (private non-commercial automobiles/total automobiles) \times 100
- ② Person-kilometer = operating mileage of per route / no. of bus runs \times no. of passengers \times 0.8
- ③ Postal offices include the directorate general of post, specially graded posts, grade-1 posts, grade-2 posts, branches of posts, and representative offices of posts.
- ④ Mails per person = total mails received by postal offices in a year/mid-year population, excluding mails delivered

6. Health

Sources: "The Statistical Yearbook of Taipei City"; "Family Income and Expenditure Survey in Taipei" published by Taipei City Department of Budget, Accounting and Statistics; and "Agricultural Statistics Yearbook" published by Council of Agriculture.

- ① Data series on medication as % of consumption & expenditure for 1968 and before referred to the averages for Taiwan Area.
- ② Ambulances include those owned by Taipei Fire Department and Bureau of Health.
- ③ Gross birth (death) rate = (total births (deaths) in a year/mid-year population) \times 1,000
- ④ Population served by a medical doctor = year-end population/number of medical doctors
- ⑤ Data series on per capita daily protein and calorie consumption (including wine) referred to the averages for Taiwan Area (preliminary data).

7. Education

Source: "The Statistical Yearbook of Taipei City".

- ① School Age children in school = (children in school/school age children) \times 100
- ② Literacy rate of population aged 15 and over = (literate population aged 15 and over/total population aged 15 and over) \times 100
"Literacy Rate of Population " referred to people aged 6 and over until 1996.
- ③ College-educated population as % of total population aged 18 and over = (population receiving education of college or higher/total population aged 18 and over) \times 100
- ④ Data series on education, science and culture as % of government expenditure referred to expenditure figures passing auditing procedure.
- ⑤ Per capita real government expenditure for education, science and culture = audited expenditure figure at 2001 constant price/mid-period population

8. Culture and Recreation

Sources: "The Statistical Yearbook of Taipei City" \ "Family Income and Expenditure Survey in Taipei" published by Taipei City Department of Budget, Accounting and Statistics.

- ① No. of book-borrowers per 1,000 persons = (No. of book-borrowers/mid-year population) \times 1,000
- ② Library-collected books per 1,000 persons = (books collected by city-owned libraries/ year-end population) \times 1,000
- ③ Data series on entertainment as % of consumption expenditure, newspaper diffusion rate, magazine diffusion rate, and television diffusion rate for 1968 were based only on the sample of Taipei City obtained from the Family Income and Expenditure Survey in Taiwan Area.
- ④ Newspaper (magazine, television, video tape recorder, personal computer, cable television) diffusion rate = (year-end households owing the specified item (for 1969 and before, referring to the number of the specified item) / year-end total households) \times 100

9. Living Environment

Sources: "The Statistical Yearbook of Taipei City"; "Family Income and Expenditure Survey in Taipei" published by Taipei City Department of Budget, Accounting and Statistics.

- ① Data series on living space per house for 1968 referred to averages for Taiwan Area.
- ② Sedan vehicle (telephone, geyser, washing machine, air conditioner) diffusion rate = (no. of households owning specified equipment (for 1968 and before, referring to the number of the facility) /year-end total households) \times 100
Data series for 1968 based only on the sample of Taipei City obtained from the Family Income and Expenditure Survey in Taiwan Area.
- ③ Monthly electricity consumption per household = total electricity consumption by light users/ mid-year light users / 12

10. Social Security

Source: "The Statistical Yearbook of Taipei City"

- ① Ratio of senior citizens in nursery homes = (senior citizens in nursery homes/population aged 65 and over) \times 100
- ② Ratio of children in baby-sitting institutions = (children in baby-sitting institutions/children aged under 6) \times 100
- ③ Medical institutions per 1,000 low-income citizens = (service-providing medication institutions/low-income citizens) \times 1,000

STATISTICAL ABSTRACT

Publisher: Su-Mei Shih

Compiled by: Department of Budget,
Accounting and Statistics
Taipei City Government

Address: Central Area, 5F, No.1, Shifu Road,
Taipei, Taiwan, R.O.C.

<http://www.dbas.taipei.gov.tw>

Telephone: 886-2-27287624

Printer: Chen Yin Enterprise Co., LTD.

Publishing Date: June 2006

GPN: 2005700034

ISSN: 1814-3083

List Price: NT\$200



