

Public Art on the Tucheng Line



Far Eastern Hospital Station

River Romance

Artist: Sen-Chun Yang

Dimensions (cm): H200 x L2600 x D15

Medium: Glass, LED lamp

Completion Date: October 2005

Location: Concourse

Selection Method: Open competition

Cost: NT\$3,000,000

The river has witnessed the historical progress of Banqiao, and reflects the memories of the area's residents. "River Romance," which combines LED lamps with glass sticks to create a beautiful glistening light of waves like a stream on the ground, can be regarded as a "river in the space." In addition, the light changes color with time, making a "river of time." Furthermore, the poems composed by Huey-Chih Hsu are engraved on the glass sticks, looking like moving waves from a distance. However, their characters become clear when viewed from close up, making a "river of culture."



Haishan Station

Farm

Artist: Ching-Huih Huang

Medium: Marble, light, mosaic tiles

Completion Date: May 2006

Location: Open space outside Exit 2

Selection Method: Open competition

Cost: NT\$2,000,000

Composed of 12 cows in different sizes and diverse forms, this work is created as street furniture. The ponds on the ground will be created with mosaic collages under the cooperation of the students and teachers of Leli Elementary School nearby.



Tucheng Station

The Legend of Golden Town

Artist: Wei-Cheng Tu

Dimensions (cm): H200 x L825 (The front side), H210 x L300 (The side panels)

Medium: K'ua stone

Completion Date: February 2006

Location: Concourse

Selection Method: Open competition

Cost: NT\$3,000,000

This faux archaeological piece produced with high-tech means is displayed in a way similar to how excavated artifacts are presented.

The piece bears all the marks of excavated carved objects in an unrivalled blending of a signifier of modernity and relics of ancient civilization. It reveals historical diversity and the constantly changing environment of Tucheng District, evoking a sense of progress and development in the context of modernism.

Images of a dragon-type sacred beast appear at the front and on both sides of the entrance, coupled with images including computers, peripheral products, and MRT signs, to imply safety, speediness, and convenience of the high-tech MRT. Parts of the images were created by residents of Tucheng and represent the creativity and local characteristics of Tucheng. The extraordinary cultural mix of Tucheng crosses different civilizations and generations to discover a new outlet in "The Legend of Golden Town."



Yongning Station

Time • Splinter

Artist: Tsung-Chieh Hsu

Medium: LED light, glass, motor

Completion Date: March 2006

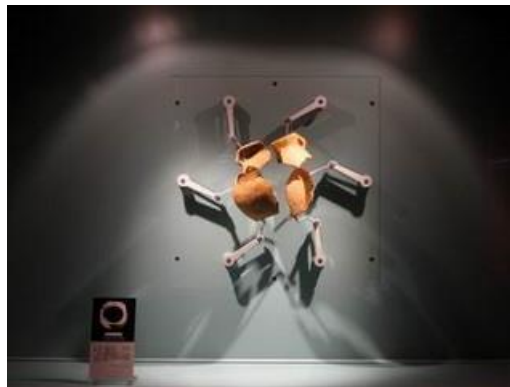
Location: Concourse

Selection Method: Open competition

Cost: NT\$4,000,000

"Time • Splinter" comprises of two works, "The Splinter of Time" and "86400."

Compared with other MRT stations, Yongning Station on the Tucheng line is special because many ancient relics of early human settlements have been discovered in this area. These elements formed the basis of the work.





The artist is aiming to express the sensation of time - the historical relics are the fragments of time, which belong to Yongning. Every single day is 86,400 seconds long and belongs to each and every citizen. The work tells us about the atmosphere at the place where the past and the present cross in the unique surroundings of an MRT station. It moves and is intended to inspire the passengers to feel the difference between the passing of history and the very present.

