

Circular Line Phase I

After discussion by the public art executive team, it was decided that the public art on this section would forego regular small objects scattered at each station, instead of installing one or two master works with concentrated budgets. In accordance with this expectation, the public art on this section has been divided into two areas. Area one is the color scheme for the elevated columns, beams, drainage pipes, sound barrier walls, and the exteriors and interiors of MRT cars. Area two transforms the whole of Banqiao (Y15) station into a piece of art. With many discussions, nominated by the public art executive team and approved by the public art committee of New Taipei City Government, the artists have been confirmed as follows: Area one was commissioned to a French architect, Ms. Emmanuelle Moureaux, who is highly proficient in color design and now lives in Japan. Area two was commissioned to the world famous artist, Mr. Daniel Buren, to create a classic model. The main theme of public art at this section is “Like the clouds’ swift passage, the dragon travels thousands of miles”.

- [Introduction to the architectural design and public art on the circular line](#) (DORTS Newsletter) (chinese)
- [Video of the Circular Line Phase I](#) (chinese)



The rainbow bridge

Treasure map



●Public Art at Area One

Title: **Shine**

Artist: Emmanuelle Moureaux

Dimensions and Locations:

The color scheme of elevated steel columns (about 212 columns), steel beams (about 8 km including two bridges), sound barriers (about 10 km) and drainage pipes, platform screen doors design (13 stations), exterior elevation colors (3 stations), staircase wall colors (4 stations), as well as train exterior design (5 trains) and interior design (17 trains) for the 15.4-km-long Taipei Circular line Phase I.

Material: painting, stickers, FRP, metal, plastic

Completion Date: December, 2019

Selection Method: Direct commission

Design fee: NT\$ 16,000,000

Description:

The design expresses the beautiful colorful effects of the scales of the dragon. Reflected through light and radiance.

Shining colors move and change their appearance, creating beautiful scenes, giving rhythm and cheer to the urban landscape.

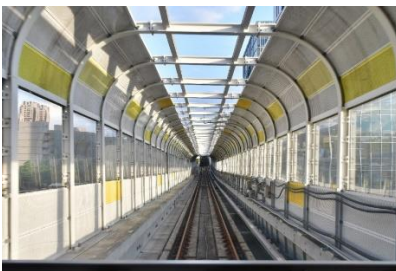
The dragon travels in the sky, reflecting the light of the sun,

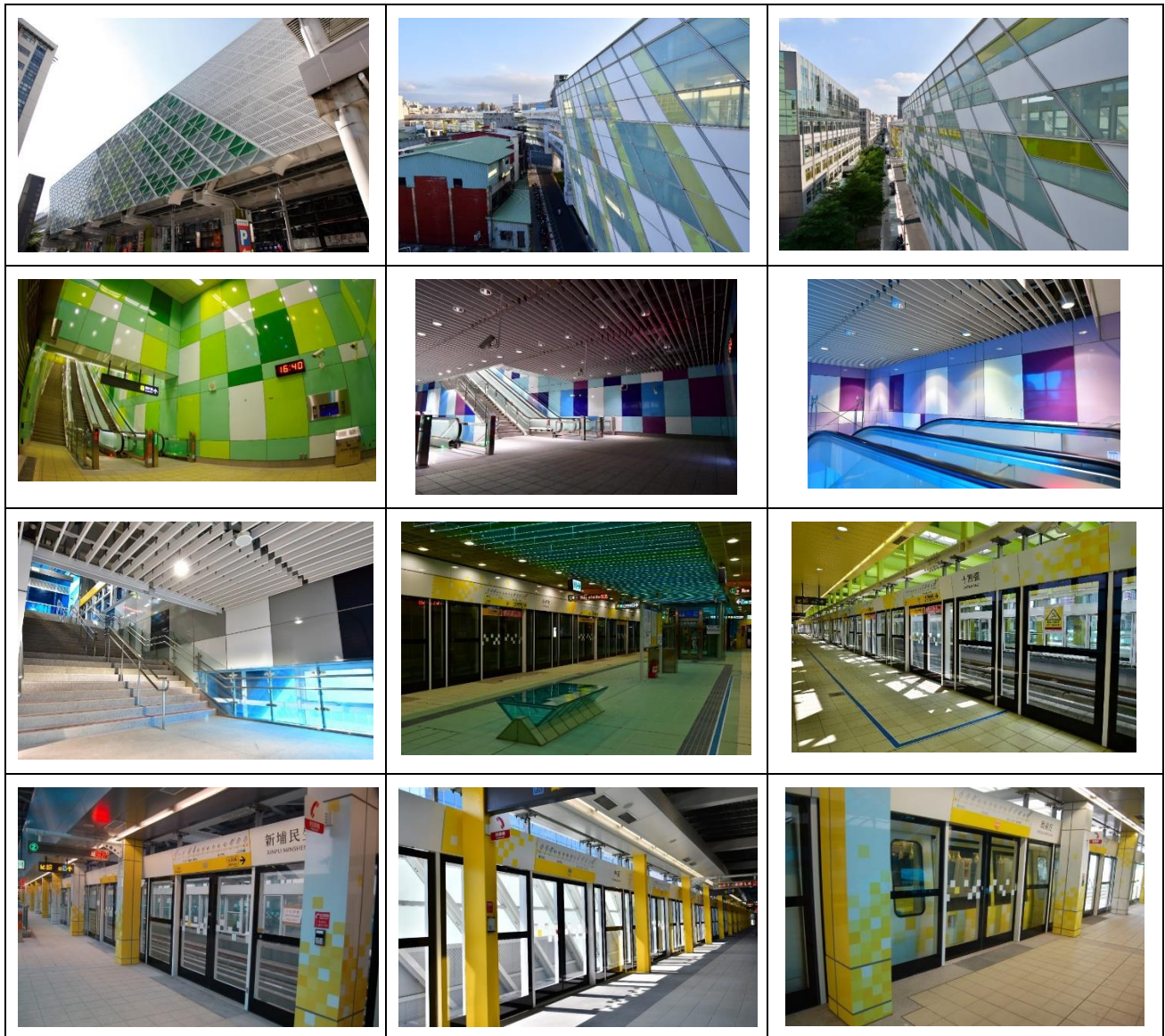
The dragon dives through the night, reflecting the light of the moon.

During his long travels, rainbows and signs of happiness appear in the sky.

[Photo Gallery](#) (Public art on the circular line phase I)







●Public Art at Area Two

Title: **Between Reflections**

Artist: Daniel Bruen

Material: Porcelain Enamel, Aluminum, LED

Completion Date: December, 2019

Selection Method: Direct commission

Design fee: NT\$12,000,000

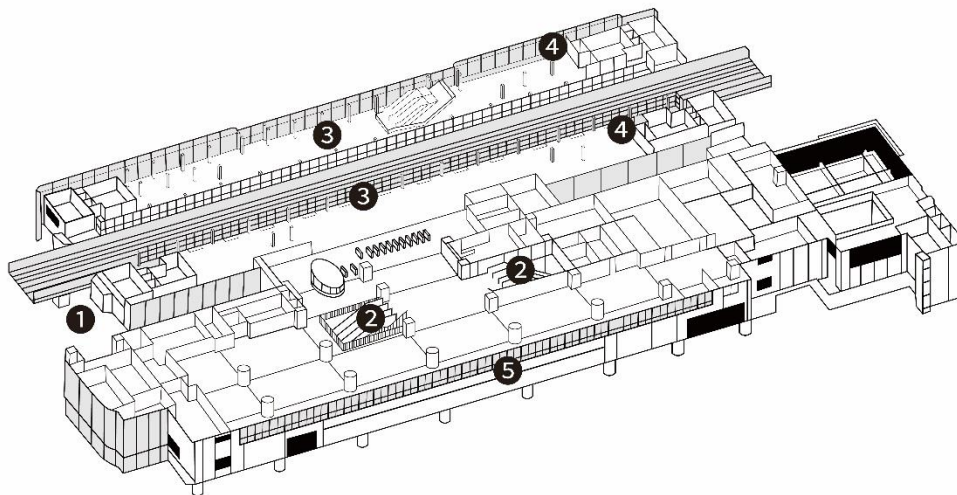
Location: (1) 12 columns under the station (2) Walls and ceilings at staircases (3) Platform screen doors and columns (4) LED Lighting at platform (5) The facade of the bus terminal

Description:

The artist uses his iconic artistic vocabulary – the monochromatic, 8.7 cm strip, minimalistic geometric shapes, colors and light – to construct a newly crafted architectural space, immersing passengers entering the station in a symmetrically mirroring and infinitely extending world. The geometric shapes stretch upward along both sides of the stairways before intersecting at the center of the ceiling, forming a virtual mirror space.

Two prismatic LED belts spanning the top of the station radiate flowing light and echo the rainbow-colored columns on the platform, warmly welcoming and seeing off passengers.

The geometrically shaped piers adorned with mixed colors support the massive volume of the station, rendering it visually floating in midair and creating a fresh focal point amidst the urban landscape.



Index map of public art locations



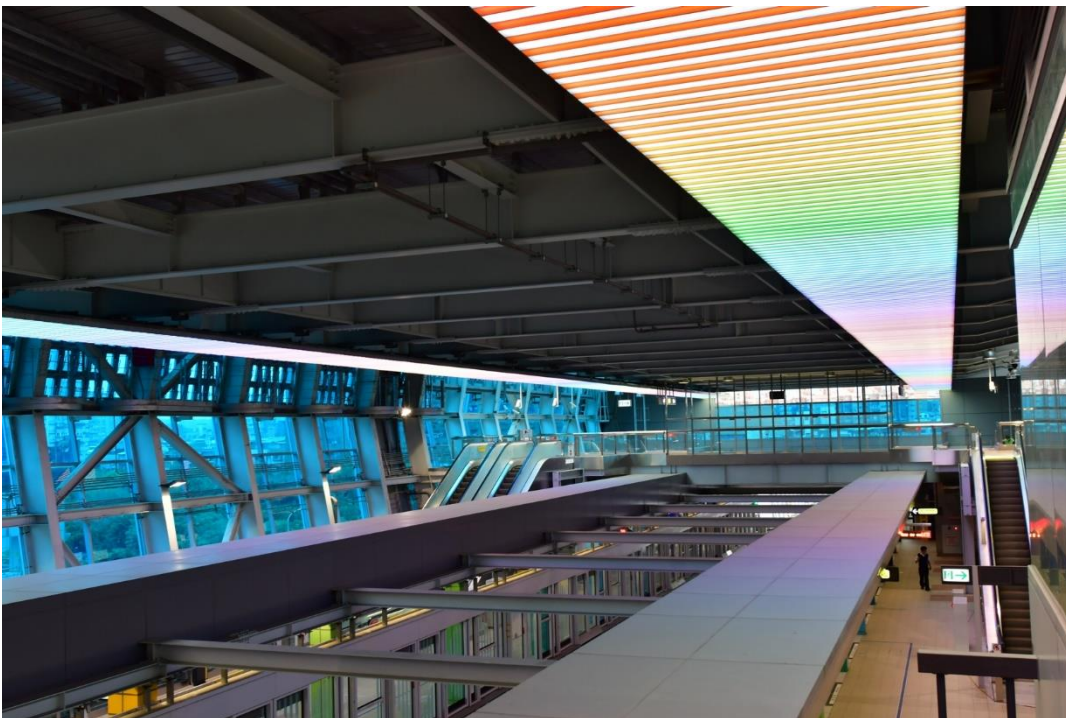
①The columns under the station guide the passengers to the station.



②The artistic staircase guides passengers to the trains.



③The rainbow columns and patterns on screen doors were specially designed by the artist.



④The LED lighting above the screen doors change colors periodically every day.



⑤ The big waves on façade of bus terminal form the shape of a dragon image as the public art theme.

[Video](#)