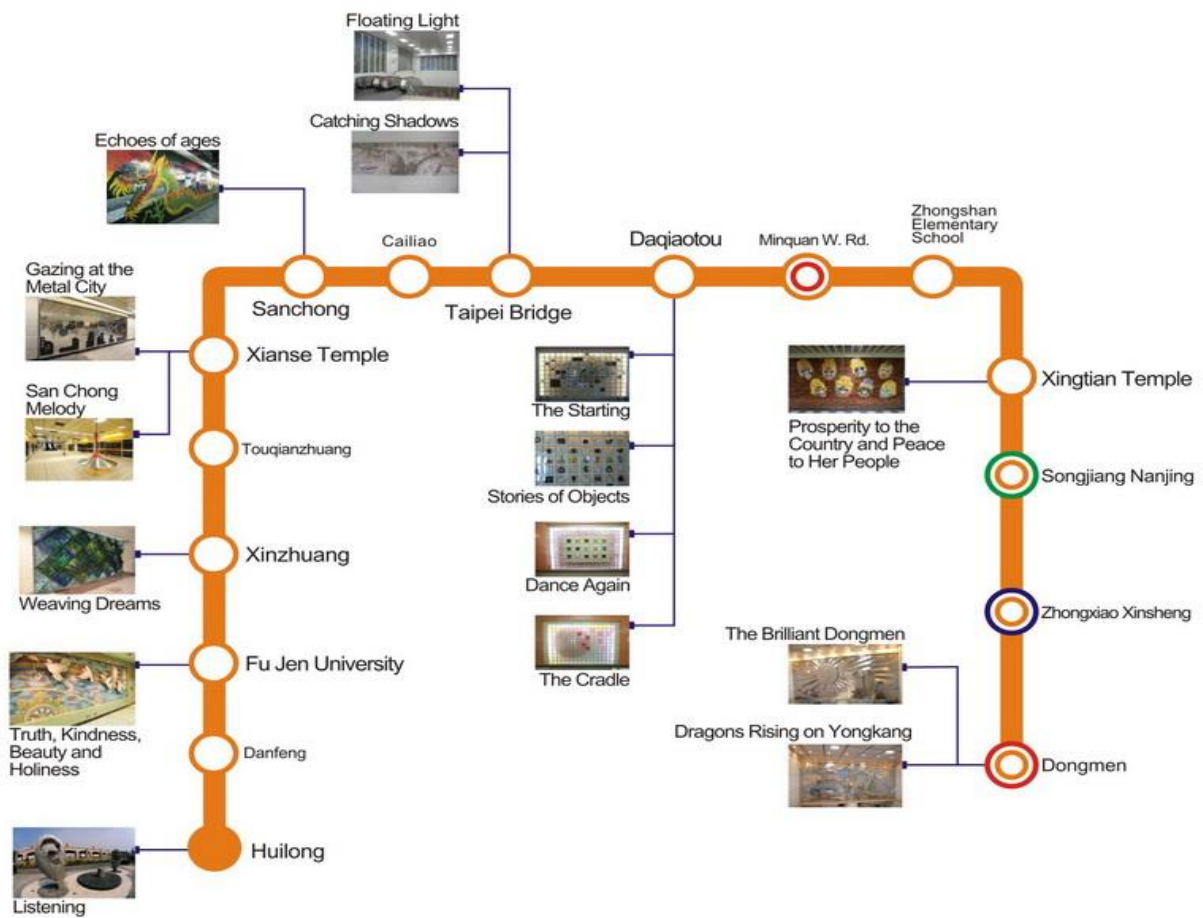


# Public Art on the Xinzhuang Line



## Dongmen Station

### **The Brilliant Dongmen • Dragons Rising on Yongkang**

Artist: Chang Nai-Wen (VERY Conception Corporation)

Completion Date: April 2012

Medium: Stainless steel, LED lights

Dimensions (cm): L864 x H360 x D25 x 2 pieces

Location: Walls of vertical circulation area

Selection Method: Invitational competition

Cost: NT\$5,000,000

The artwork is composed of two pieces. The images of sunrise and an arbitrary time gate are combined in "The Brilliant Dongmen" to form a metaphor. It implies that Dongmen Station connects traditional and contemporary space through a transcendence of time. In addition, a traditional dragon image in "Dragons Rising on Yongkang" symbolizes MRT trains rapidly weaving their way from place to place.



## **Prosperity to the Country and Peace to Her People**

Artist: Humble Stone International Art Company/Wen-Yi Kung

Completion Date: June 2009

Medium: Ceramics

Dimensions (cm): H250 x L3720

Location: Concourse

Selection Method: Open competition

Cost: NT\$6,100,000

The title of this work is Prosperity to the Country and Peace to Her People. Its main idea comes from the flourishing of local temples, the spirit of guarding the country and protecting her people. This artwork includes a blend of ceremonial objects used for blessing rituals performed in local Taiwanese temples, painted masks of the Eight Household Generals which ward off evil and misfortune, and imagery to convey the hope for a peaceful country and people, defining the overall spatial and humanistic characteristics of this station while simultaneously displaying the culture of Taiwanese folk beliefs.

The design of this work can be divided into five main parts: the central part is "Architectural images of temples - Roof, temple door, dragon ornamented column," flanking each side of the center are "Traditional temple fair activities" and "Rituals and objects to pray for blessings." "Traditional temple fair activities" is a composition of elements from the Eight Household Generals and lion dance, while "Rituals and objects to pray for blessings" is composed of ritual object elements. The two parts at the opposing ends are "Architectural images of temples—brick walls, lattice windows and eaves tiles." As people walk past,

following the visual movement, they will experience the changing parts of the work, and aesthetic sense of rhythm created.



## Daqiaotou Station

### **The Starting Point**

Artist: Shin-Yu Wang

Completion Date: January 2010

Medium: Ceramic, glass blocks, copper wire

Dimensions (cm): H235 x L360 x D15

Location: Concourse

Selection Method: Invitational competition

Cost: NT\$800,000

The Dadaocheng was the starting point of the old days. The people who had moved upon this land left their cultural imprints. The establishment of the Daqiaotou Station will change the route of moving, creating a new starting point for the future.



## Stories of Objects

Artist: Fang-Yi Chu

Completion Date: January 2010

Medium: Ceramic, glass blocks

Dimensions (cm): H235 x L360 x D15

Location: Concourse

Selection Method: Invitational competition

Cost: NT\$800,000

The artist sees objects as three dimensional images: an image is a media that can carry one's subjective consciousness and emotions. Every object in this work has its own story recording the memories of Dadaocheng. Besides using objects to record the aging memories, the artist also combines new memories from students of Daqiao Elementary School to present a fresh and colorful story. By exchanging old and new memories, the story will accumulate and continue.



## **Dance Again, River**

Artist: Tien-Huei Hung

Completion Date: January 2010

Medium: Glaze chunk, ceramic, glass blocks

Dimensions (cm): H235 x L360 x D15

Location: Concourse

Selection Method: Invitational competition

Cost: NT\$800,000

Dadaocheng Wharf was built and cultivated aside the Tamsui River. However, the advent of the railways had a massive impact on the waterway transport network and trading. Thus, Dadaocheng Wharf and its commercial area gradually declined and lost their splendor. With the MRT transportation and urban renewal, the glory of Dadaocheng will come back.





## **The Cradle**

Artist: Zung-Lung Tsai

Completion Date: January 2010

Medium: Ceramic, glass blocks

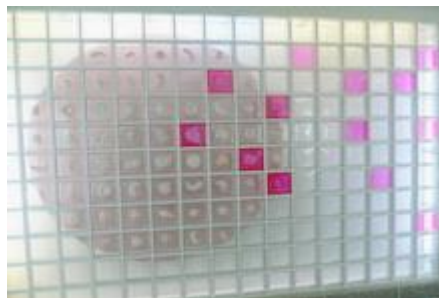
Dimensions (cm): H235 x L360 x D15

Location: Concourse

Selection Method: Invitational competition

Cost: NT\$800,000

The relationship between embryos and the matrix symbolizes the educational function and the human accomplishment gestated by Daqiao Elementary School. The matrix embraces embryos and provides them with abundant nutrients, inferring that the school educates children, imparts knowledge and skills. Therefore, the school becomes a huge and abstract cradle, ensuring each child's maturity and confidence.





## **Floating Light and Catching Shadows**

Artist: Genius Loci Studio/Huang Wen-Ching

Completion Date: January 2012

Selection Method: Open competition

Cost: NT\$5,500,000

## **Floating Light**

Medium: Mosaic Glass

Dimensions (cm): W1/W2-H330 x L550 x D10, W3-H280 x L580 x D10

Location: Windows of the main exit

This work is based on images of Taipei Bridge and Tamsui River, reflecting the public art motif of the station which is "The Story of Bridges." In this way, the station is the "main body of the bridge," transformed by the fluidity, inclusiveness and diversity of water into "floating light" and "catching shadows." These characteristics also reflect the architectural character of Taipei Bridge Station, an impressive combination of "suitability" and local culture brought together to create a work of art and space.

The shape of this work is derived from the way in which Taipei Bridge bestrides the Tamsui River. The piece is made up of different shaped glass tiles in myriad colors, arranged as upper and lower lines. The interconnectedness of the left and right of the structure makes it possible to deconstruct the complexity of the original framework, creating lines imbued with vitality and softness that extend into the

distance. This crafts a distant artistic view wherein the sky and water blend together as one beautiful whole.



## Catching Shadows

Medium: Inlaid marble, etched Stanley glass,  
optical fiber lighting

Dimensions (cm): H288 x L960 x D18

Location: Stair landing of the main exit

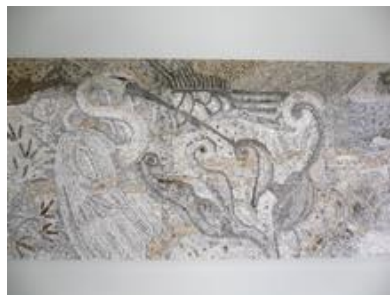


This work is based on images of Taipei Bridge and Tamsui River, reflecting the public art motif of the station--"The Story of Bridges." These are transformed into a development of artistic form by the fluidity, inclusiveness and diversity of water.

**Technique:** This piece utilizes classical Byzantine mosaic work to create images of the never ending flow of the river under Taipei Bridge.

**Style:** The work utilizes elements taken from sandbanks and the riverbank along the Tamsui River, including signs of animals and birds in the mud, changes wrought by the tides and the endless flow of water, to create an indistinct yet vast horizontal scroll-type landscape.

**Overall:** A single color of etched Stanley glass is used to frame the exquisite detail of the inlaid work, like a horizontal scroll of Hsuen paper. In this way, the work recreates the sense of a moving visual feast that is such a prominent feature of traditional Chinese painting.



## Sanchong Station

### **Echoes of ages**

Artist: Cero Design (Puerto Rico)(Celso Gonzales & Roberto Biaggi)

Completion Date: June 2009

Medium: Ceramic tile mosaic

Dimensions (cm): H310 x L6000 x D0.6

Location: Concourse

Selection Method: Open competition

Cost: NT\$9,500,000



This artwork represents the equilibrium between the ages, a coming together of the old and the new in perfect harmony. Progress, well-being, and a fast technological future are symbolized in abstract tones of red, yellow, black, and white. Within this world, the traditions represented in realism, architecture and theater live in peace, and a dragon guards the gates of the ancient culture.







## Xianse Temple Station

### **Gazing at the Metal City**

Artist: Mei-Jen Wang

Completion Date: July 2009

Medium: Stainless steel, copper, titanium, enamel, tree lacquer

Dimensions (cm): H255 x L700 x D12

Location: Wall between Exits B1 and B2 on the concourse level

Selection Method: Invitational competition

Cost: NT\$2,500,000



Streets in the industrial zone, the smell of the factories, the discordant noise of the machines, all these are my memory of this land.

Images of the region are reflected on the six glistening pieces of stainless steel: Sand dunes created by the Tamsui River and Dahan River, and Mount Kuan-yin standing like a guardian angel. Together, the rivers and the mountain nurture the cultural and economic development of this region.

This masterpiece filled with variously sized round plates represents the characteristics and historical stages of the city. The one in the middle, Xianse Temple, which is also the name of this station, expresses people's religion. Images from old photos of factories etched on copper plates tell stories of the past. Symbols of screws indicate the current activity of the metal industry. Glistening paints of electronic gadgets illustrate the future of hi-tech industry. The mirror-like small plates reflect images of you and me as we walk along this historical highway.

This land, whether in the past, present, or future, will keep progressing, and we will witness the bright future ahead of us.





## **San Chong Melody**

Artist: Pin-Yi & Pin-Chieh Wang

Completion Date: June 2009

Medium: Stainless steel, FRP

Dimensions (cm): A.  $\varnothing$  180 x H175 , B.  $\varnothing$  150 x H144

Location: Platform

Selection Method: Invitational competition

Cost: NT\$1,500,000

Distant, echoing, and rustic sounds of the 60's slowly emerged from the phonograph. Listening, meditating, and enchanting in a strange place and time, yet the surroundings were filled with motherly warmth. Is this the soundtrack of time?

The main theme is music, and the title of the project is Terzetto. Musical instruments manufactured by using metal materials and rivets, plus the application of plastic and light coloring present the sensation of suspension. In addition to connecting the original and natural beauty of the metal, the artwork also demonstrates the compactness and refinement of industrial technology. Using the feeling of suspension above the ground, a sense of weightlessness is constructed.

The artwork is intended to represent the continuation and development of San Chong industry's special characteristics by focusing on and using metal's change resistance characteristic to create new forms. Applying the sensation of modern technology to represent the cross-point between the old age and new age, it uses a metal form to present an image of a flowing musical stream. The artwork presents a muscular outward appearance with a melodious gentle spirit within,

contrasting the traditional industry image of dusty black, rigid coldness, and mechanical noise.



## Xinzhuang Station

### **Weaving Dreams**

Artist: Wen-Ching Huang

Completion Date: July 2010

Medium: Mosaic glass, fiber light

Dimensions (cm): H300 x L600 x D30

Location: Concourse

Selection Method: Invitational competition

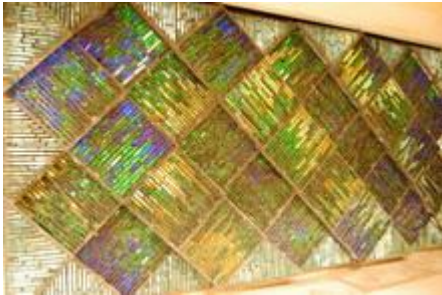
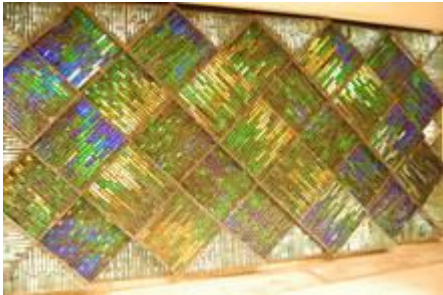
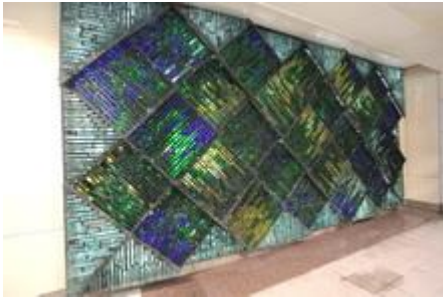
Cost: NT\$3,000,000



This artwork draws its inspiration from the history of Xinzhuang, a district long renowned for its textile industry. It brings together elements of traditional Taiwanese rattan handicrafts, and themes taken from the ancient style of Roman cobblestone paving. History and tradition are intertwined with the changing of time.

The striking visual effects were created by weaving 36 stained glass panels into an offset diagonal configuration. The piece is designed to give passersby the impression of green jungle, allowing them to enjoy for a moment the dreamlike nature of the woven visual feast.





## **Truth, Kindness, Beauty, and Holiness**

Artist: Wen-Chang Lin

Completion Date: July 2009

Medium: Porcelain mosaic

Dimensions (cm): H900 x L210

Location: Concourse

Selection Method: Direct commission

Cost: NT\$2,000,000

We rely on holiness, the dwelling of the highest spirit, to pursue truth, kindness, and beauty. The artwork takes blue sky signifying freedom as the base, a rainbow symbolizing the path of truth as the frame, and doves signifying peace with an olive branch to symbolize flight into the highest realm.

The four subjects: humanity, harmony, self-examination, and creativity echo with truth, kindness, beauty, and holiness. By focusing on the highest realm of holiness as the core of the design, we present the new combination of humanity, harmony, self-examination, and creativity in a large mosaic mural.







## Huilong Station

### Listening

Artist: Storynest Co. Ltd./Hsin-Chien Huang

Completion Date: June 2009

Medium: Stainless steel, lawn light, close lightly pebble, qr code screen printing on glass surface

Dimensions (cm): H200 x L340 x D200

Location: Park between 2 exits

Selection Method: Invitational competition

Cost: NT\$6,498,250



This piece is a mixed media installation that combines life-size sculptures with on-line video art.

As an invitation to the bustling passersby on the street, the work encourages audiences to slow their pace and recall past happenings on this soil, then to listen in a heartfelt way to this particular moment and the future yet to come.

